

INDEX OF SHEETS

SHEET NO.	TITLE PAGE
1	TITLE PAGE
2	TYPICAL CROSS SECTION OF IMPROVEMENT SINGLE TRACK COAT OF CUTBACK ASPHALT WITH CRUSHED PEA STONE, ITEM 314
3	BANKING AND WIDENING TABLES
4	QUANTITY SHEET (ITEMS)
5	QUANTITY SHEET (DRAINAGE)
6-10	EARTHWORK SHEETS
11	CONSTRUCTION DETAILS CD (DRAINAGE AND MARKERS)
12	CONSTRUCTION DETAILS CD-1 (DITCHES)
13	STANDARD STRUCTURE SHEET S B-11 (BARRICADES, SIGNS AND LIGHTS) BRIDGE
14	STANDARD STRUCTURE SHEET S-40 (BARRICADES, SIGNS AND LIGHTS) ROAD
15	STANDARD STRUCTURE SHEET S-45-45 (TWO CABLE GUARD RAIL)
16-30	PLAN AND PROFILE SHEETS
31	DETAILS OF CORRUGATED GALV. METAL PIPE ARCH AT STA. 165+19
32-70	CROSS SECTIONS

STANDARD STRUCTURE SHEET APPROVED BY THE CHIEF ENGINEER, VERMONT STATE DEPARTMENT OF HIGHWAYS
 S 40 JUNE 10 1950

PROF. NAME & NUMBER	TYPE	PAVEMENT AREA
Franklin S 51 (2)	Item 314-B	42,809 sq

RECORD PLANS

MATERIALS

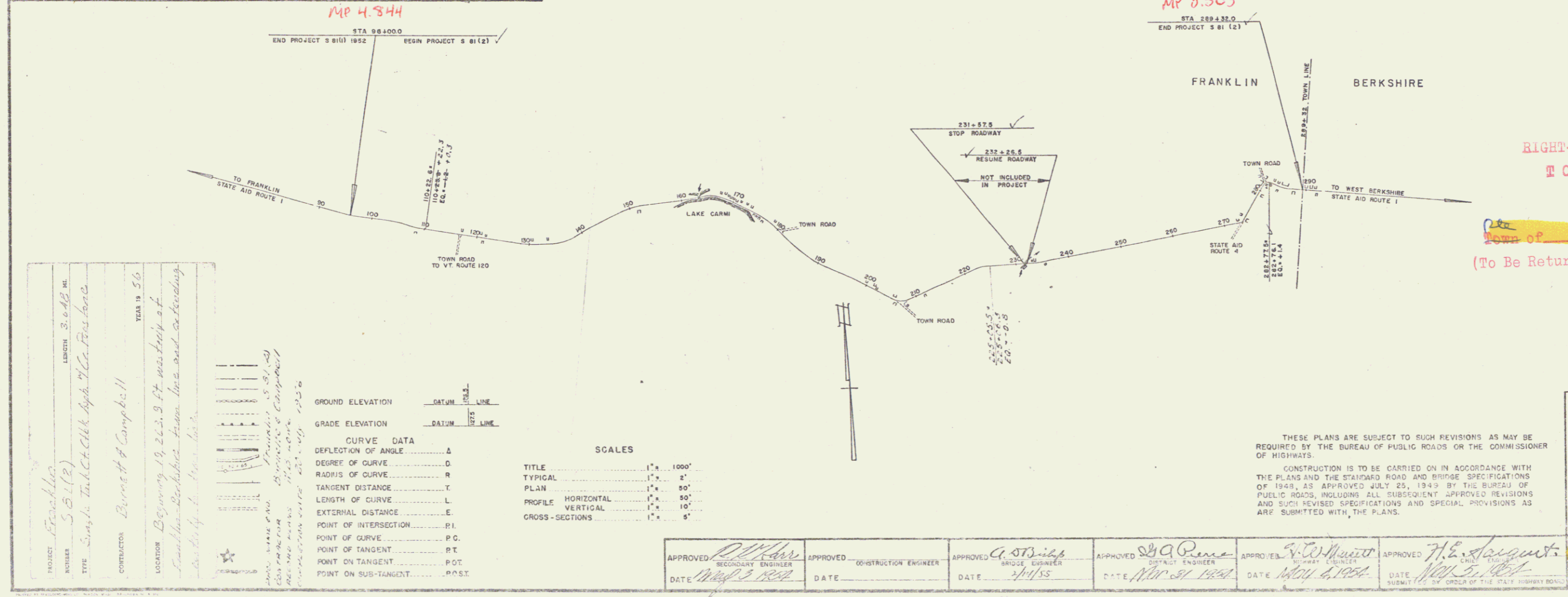
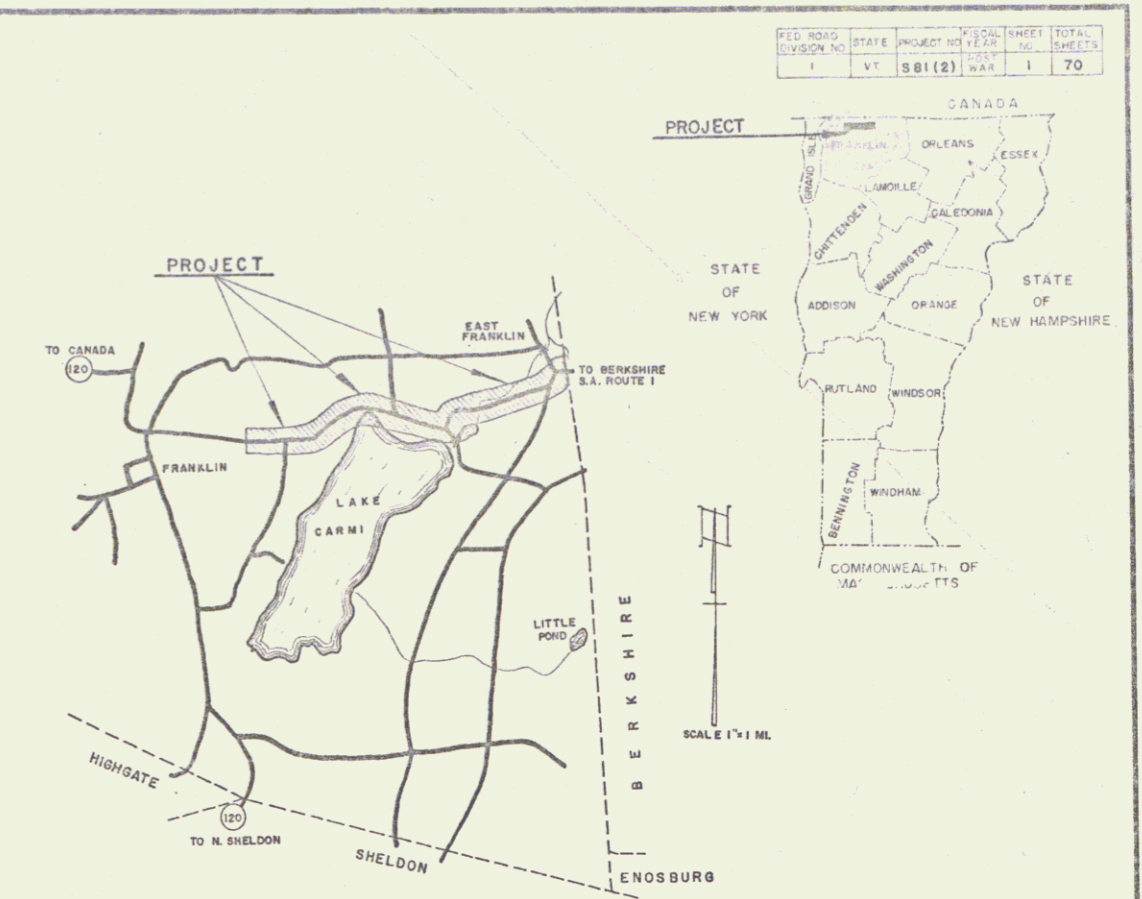
SUB-BASE OF GRAVEL - Mosher Pk., Franklin, VT.	RCP - Franklin Pipe Co., Greens Falls, N.Y.
CUTBACK ASPHALT - Socony Vacuum, East Passaic, N.J.	ACCGMP - Warner-Griswald, Essex Junction, VT.
PEASTONE FOR SEAL - Spangston Lime Works, Spangston, VT.	CABLE FOR GUARD RAIL - Littleton Steel Corp., Littleton, CO.

CONTRACTOR - Burnett & Campbell, Burlington, VT.
 CONTRACT DATED - 24 July 1953
 RESIDENT ENG'G - R. P. Downing, E.S.L., 125 July 1953
 INSPECTORS - D. H. Keister, Raymond
 CONTRACT STARTED - 20 July 1956
 RECORD PLANS - W.B. Lowe, June 1957
 CONTRACT ACCEPTED - 20 July 1956

STATE OF VERMONT
 DEPARTMENT OF HIGHWAYS
PROPOSED IMPROVEMENT
 STATE AID PROJECT
TOWN OF FRANKLIN
 COUNTY OF FRANKLIN
 STATE AID ROUTE 1 (VT 120)
 FRANKLIN-WEST BERKSHIRE ROAD

19,332.9
 BEGINNING AT A POINT 19,332.2 FEET WEST OF THE FRANKLIN-BERKSHIRE TOWN LINE AND EXTENDING EASTERLY 19,332.2 FEET (EXCLUDING BRIDGE)
 19,263.9
 LENGTH OF PROJECT 19,263.2 FEET = 3.648 MILES.

Pin # 997587



RIGHT-OF-WAY DIVISION
 TOWN FILE
 PERPETUAL
 Town of VT 120
 (To Be Returned To R.O.W. Division)

NOTE: ANY FURTHER INFORMATION CONCERNING FINAL QUANTITIES, METHODS OR ITEMS LISTED RELATIVE TO THIS PROJECT MAY BE OBTAINED EITHER THE FIELD RECORDS OR THE ESTIMATE FILE.

DEPARTMENT OF COMMERCE
 BUREAU OF PUBLIC ROADS

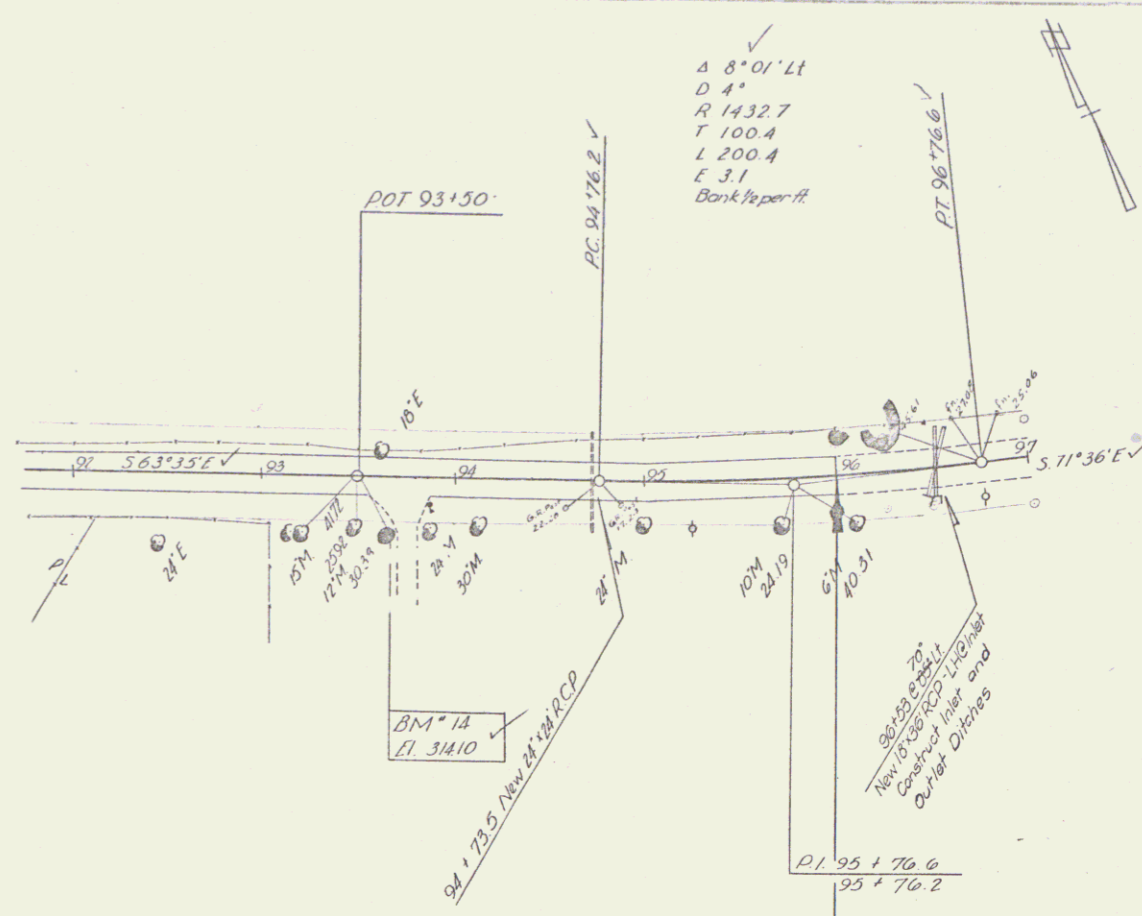
THESE PLANS ARE SUBJECT TO SUCH REVISIONS AS MAY BE REQUIRED BY THE BUREAU OF PUBLIC ROADS OR THE COMMISSIONER OF HIGHWAYS.
 CONSTRUCTION IS TO BE CARRIED ON IN ACCORDANCE WITH THE PLANS AND THE STANDARD ROAD AND BRIDGE SPECIFICATIONS OF 1949, AS APPROVED JULY 25, 1949 BY THE BUREAU OF PUBLIC ROADS, INCLUDING ALL SUBSEQUENT APPROVED REVISIONS AND SUCH REVISED SPECIFICATIONS AND SPECIAL PROVISIONS AS ARE SUBMITTED WITH THE PLANS.

APPROVED [Signature] SECONDARY ENGINEER DATE May 2, 1950	APPROVED [Signature] CONSTRUCTION ENGINEER DATE	APPROVED [Signature] BRIDGE ENGINEER DATE 1/11/53	APPROVED [Signature] DISTRICT ENGINEER DATE Nov 21, 1950	APPROVED [Signature] COUNTY ENGINEER DATE May 4, 1954	APPROVED [Signature] CHIEF ENGINEER DATE May 5, 1957
--	---	---	--	---	--

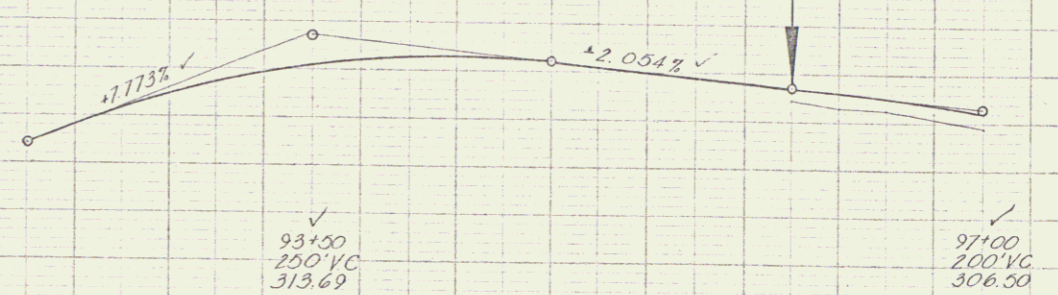
DISTRICT ENGINEER	DATE
PROJECT S. NO. 81 (2)	
SHEET 1 OF 70 SHEETS	

DATE: 09/21/07
 NAME: ASHWIN ARNER
 PROJECT: 96+00

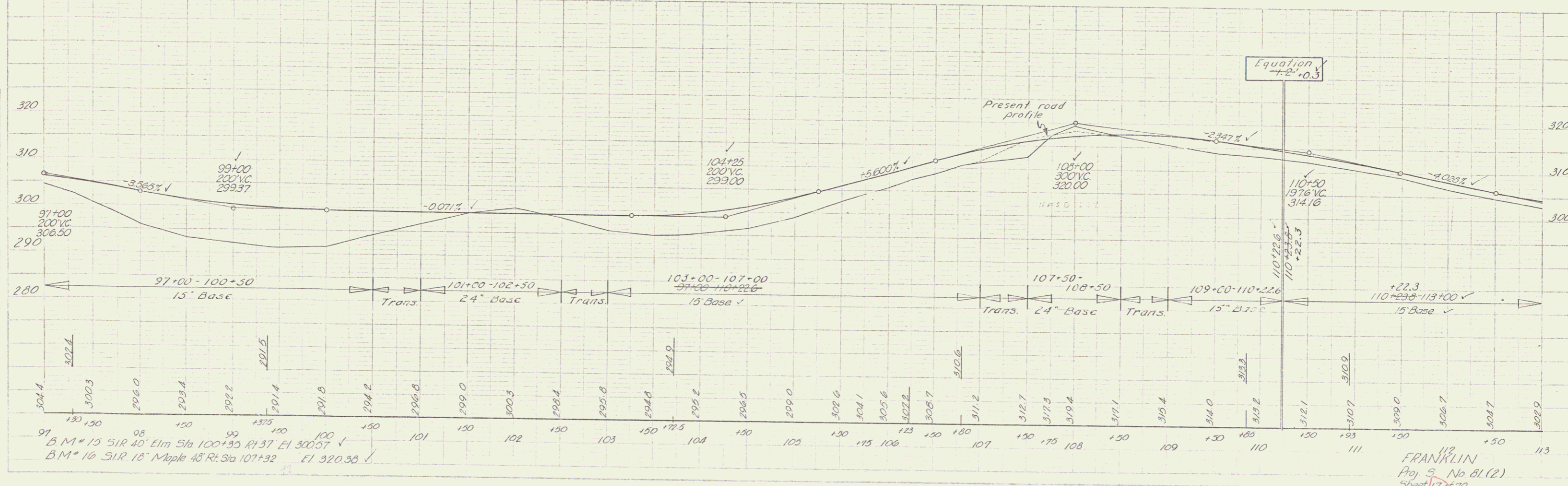
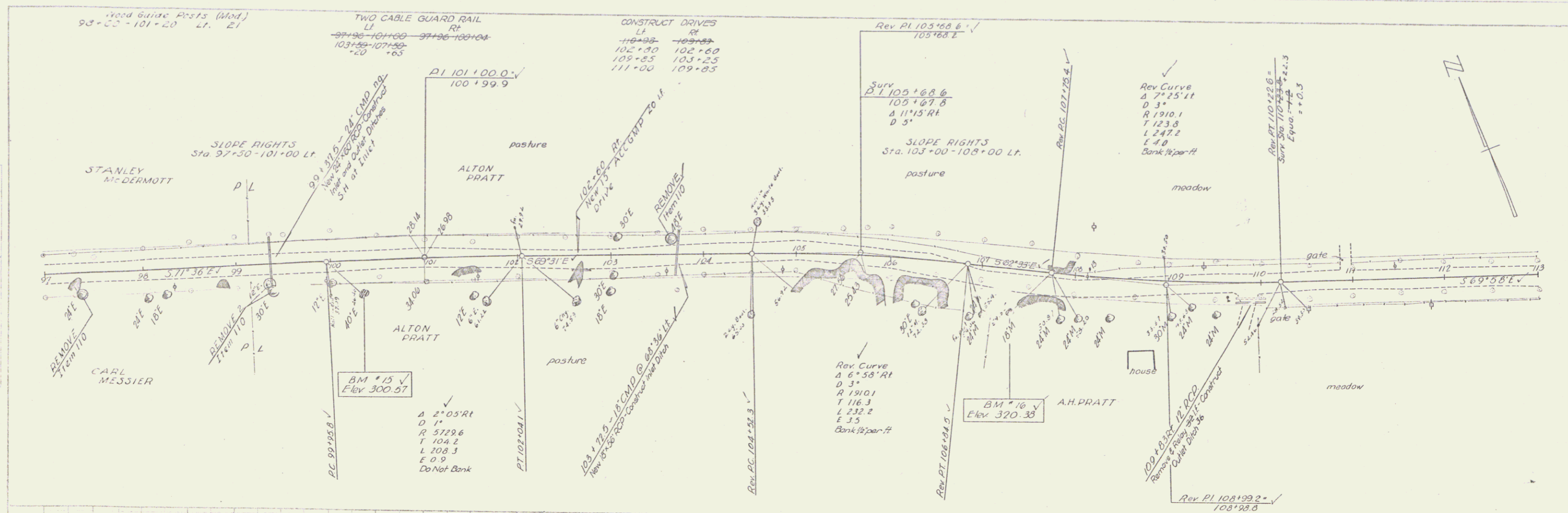
DATE: 09/21/07
 NAME: ASHWIN ARNER
 PROJECT: 96+00



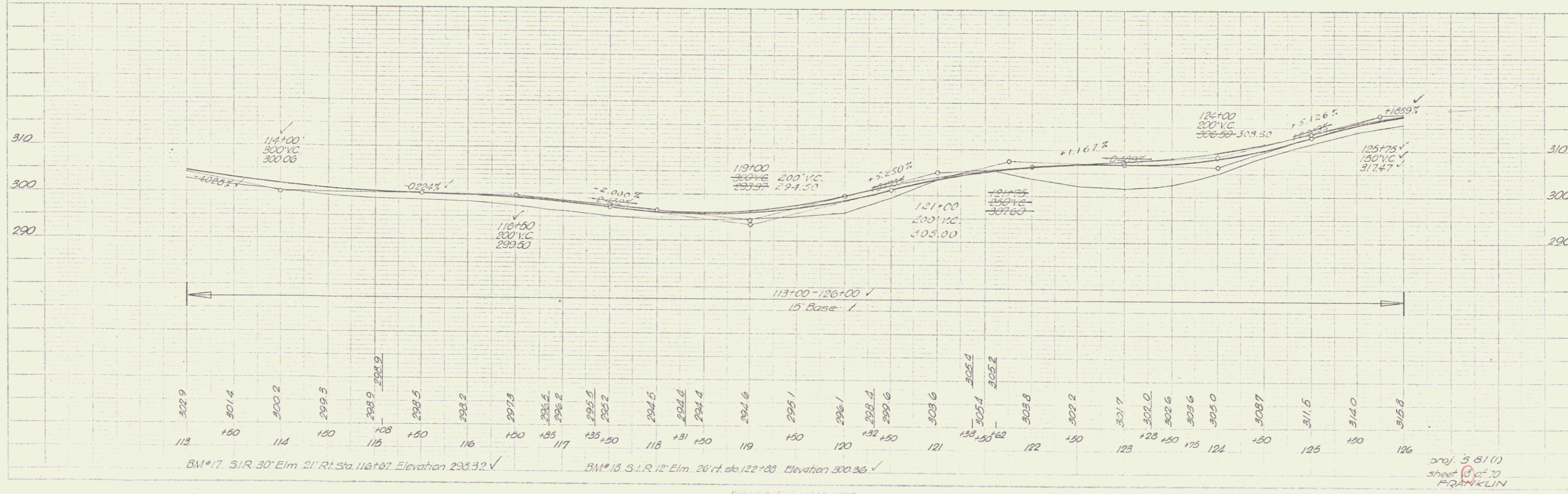
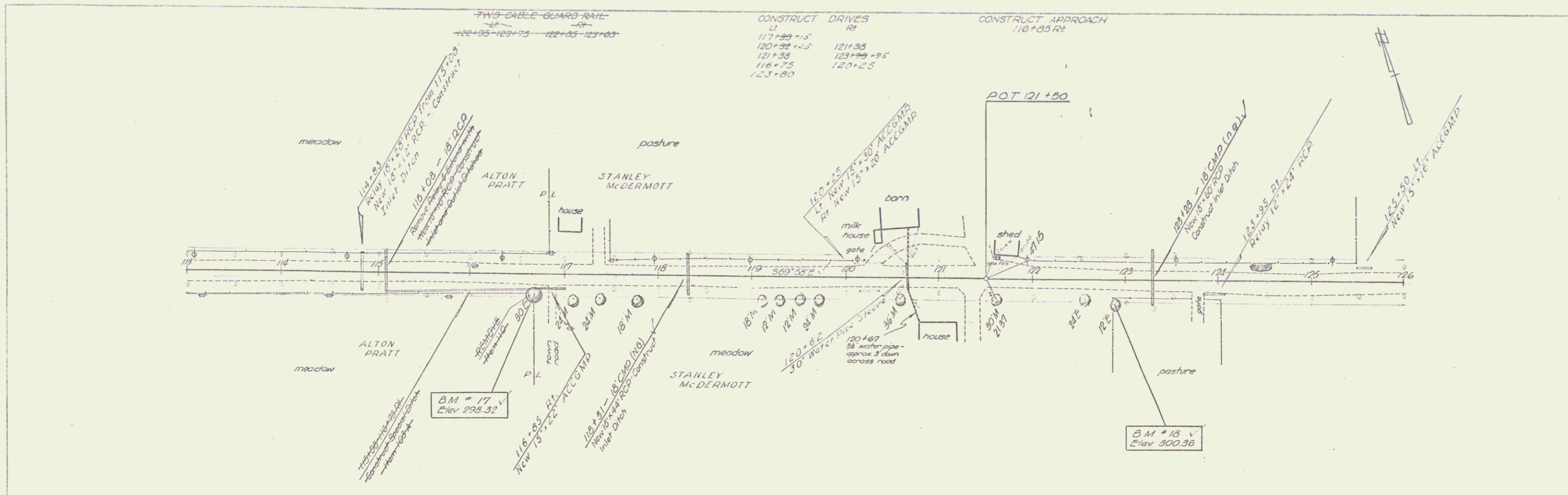
STA 96+00
 END PROJECT 581 (1)
 STA 96+00
 BEGIN PROJECT 581 (2)



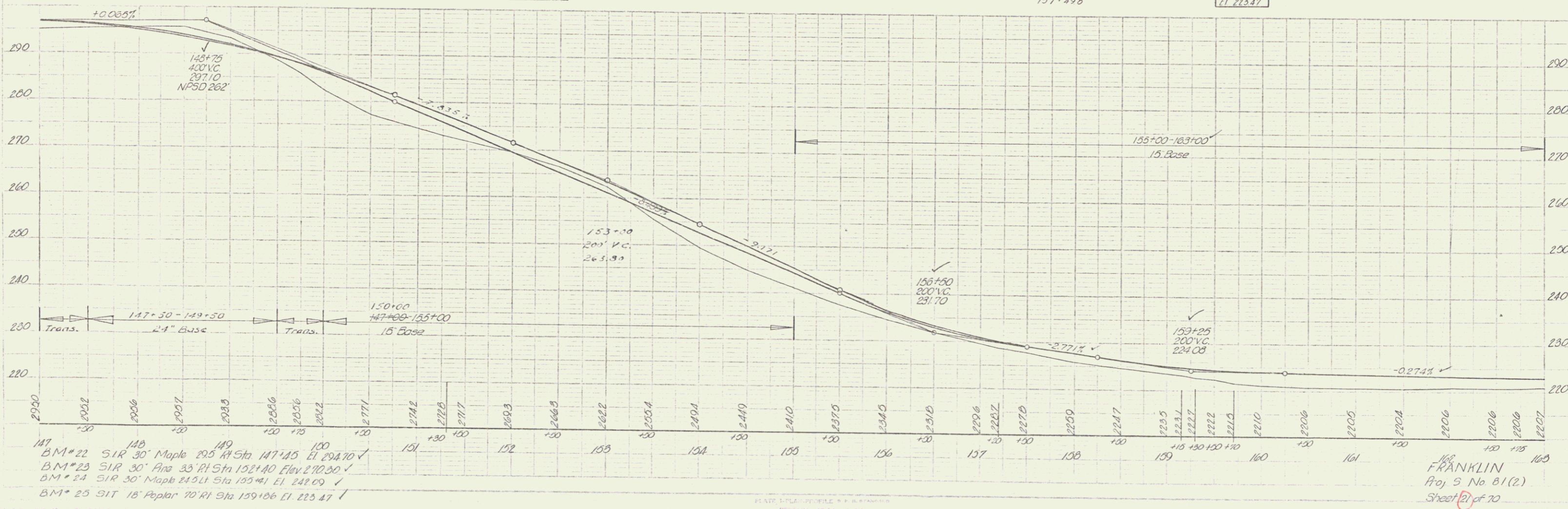
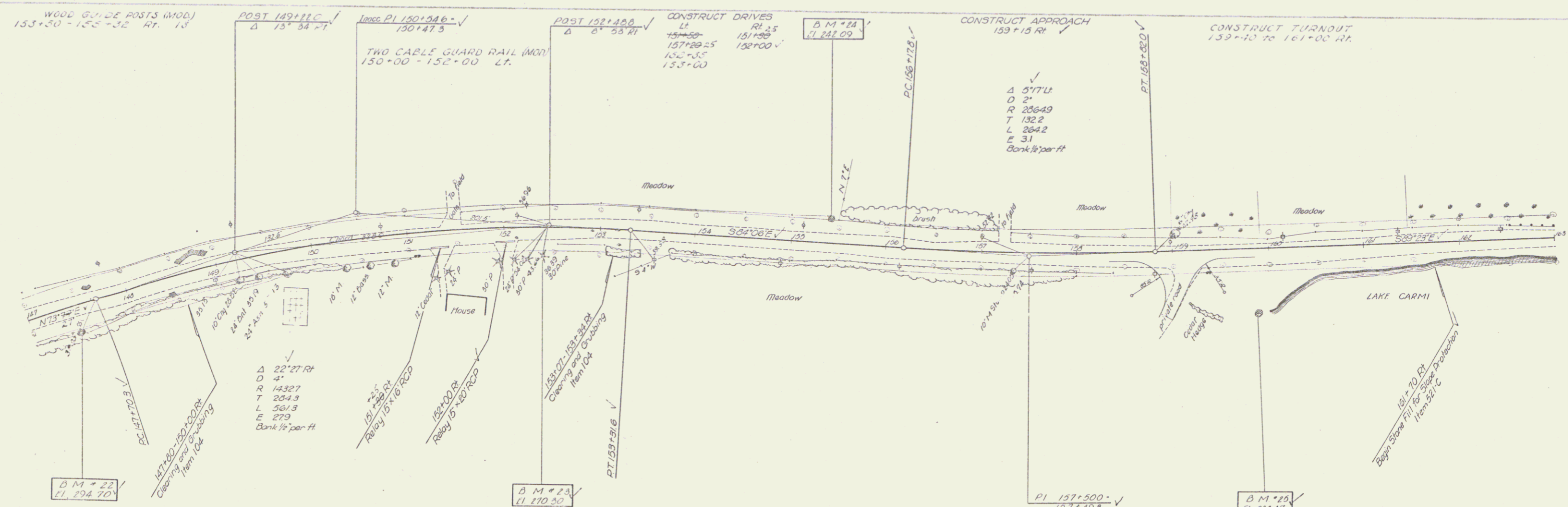
3002 3004 3001 3111 3111 3101 3076 3072 3071 3070 3072 3066 3062 3044
 92 150 93 150 175 24 130 175 05 150 96 125 150 97
 BM 14 26' Pt. Sta 93+66 SIR 15' Maple EI 3110 ✓
 FRANKLIN
 Proj 96+00 (2)
 Sheet 16 of 70



Scale	1" = 40'
Date	8-22-58
Author	FRANKLIN
Checker	
Project	5-81(1)
Sheet	10 of 10
City	FRANKLIN

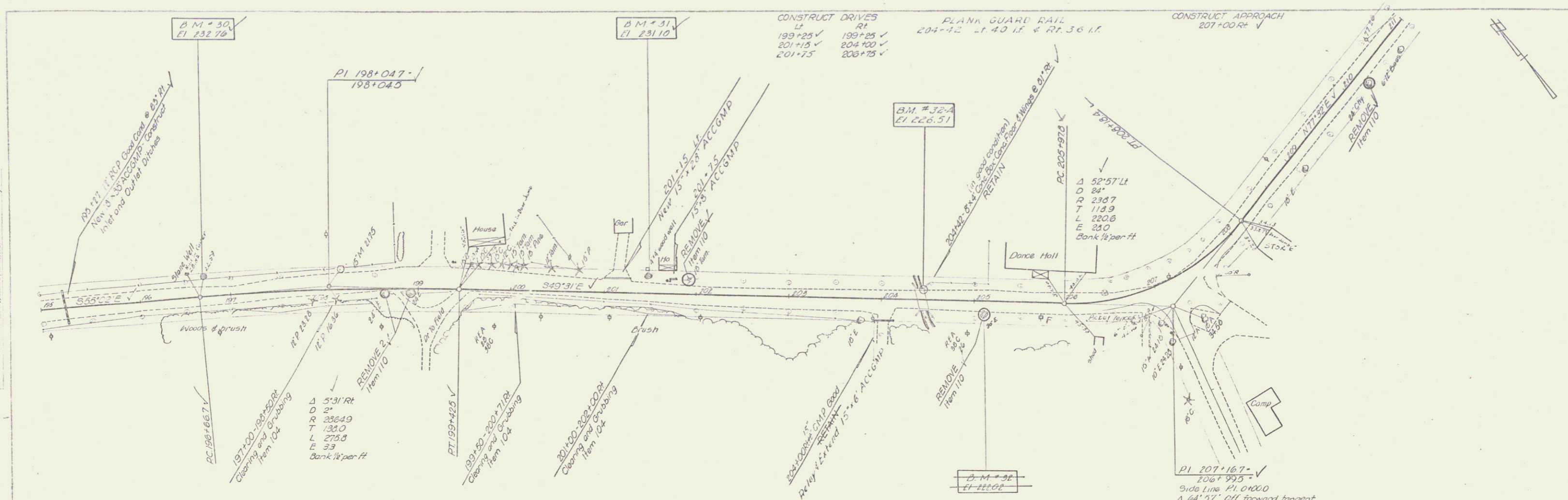


proj. 5-81(1)
sheet 10 of 10
FRANKLIN



1193
 B. Frank
 Palmer
 1/14

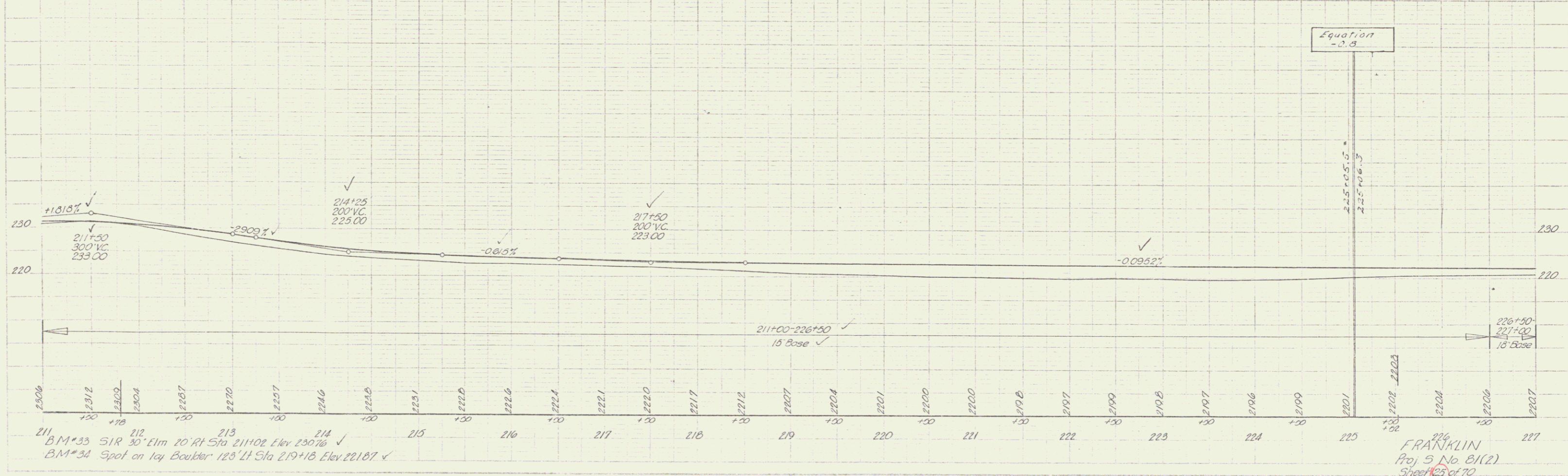
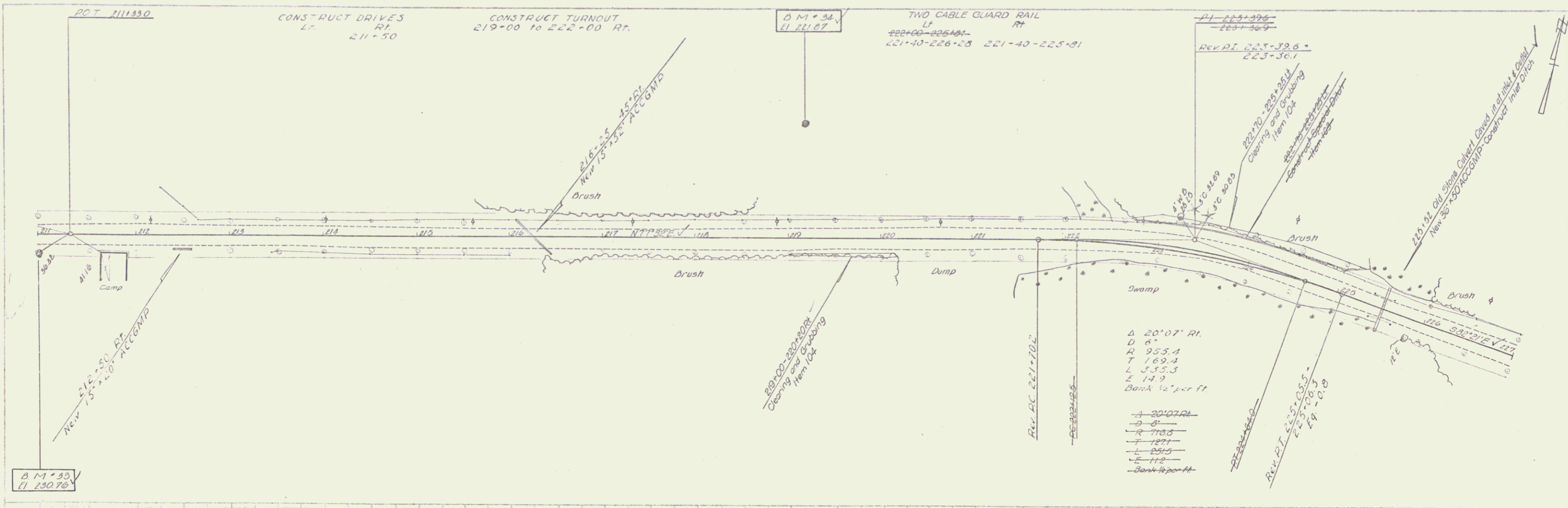
1193
 B. Frank
 Palmer
 1/14



B.M. #30 31 24' Stump 22' 11" Sta. 196+72 Elev. 232.76
 B.M. #31 31 24' Stump 18.5' Sta. 201+47 Elev. 231.10
 B.M. #32-A Top of Bridge East 11' Lt. Sta. 204+45 Elev. 226.51

210
 FRANKLIN
 Proj. 9, No. 81(2)
 Sheet 24 of 70

B. P. ...
 1/104
 1/104
 1/104

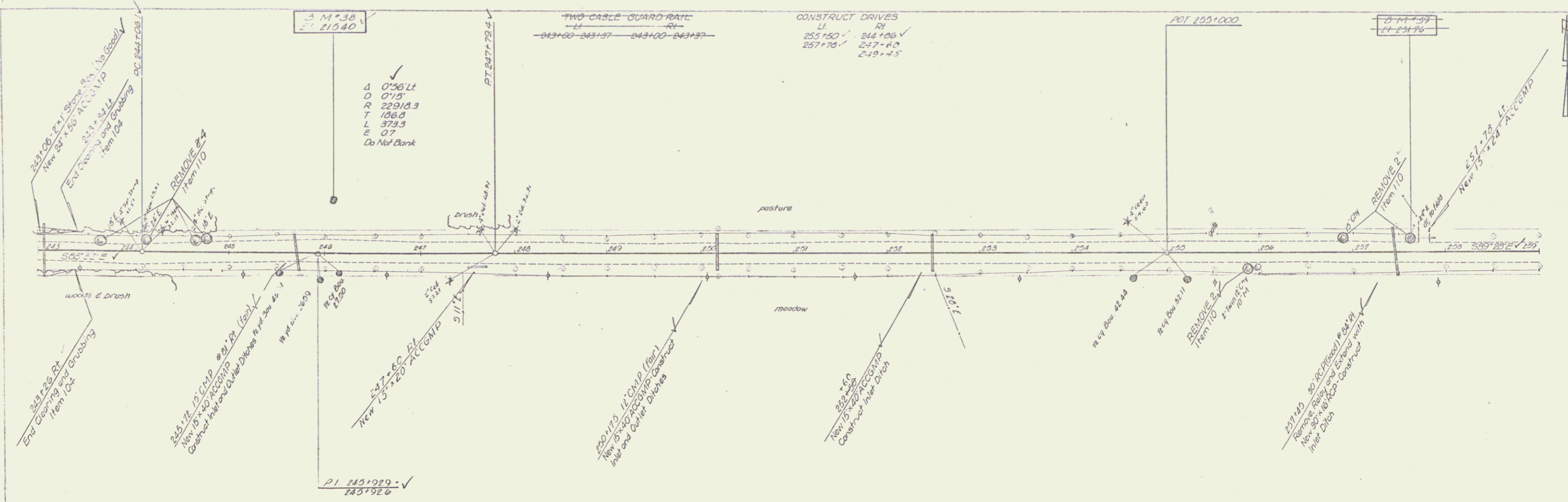


B. P. ...
 1/103
 1/103

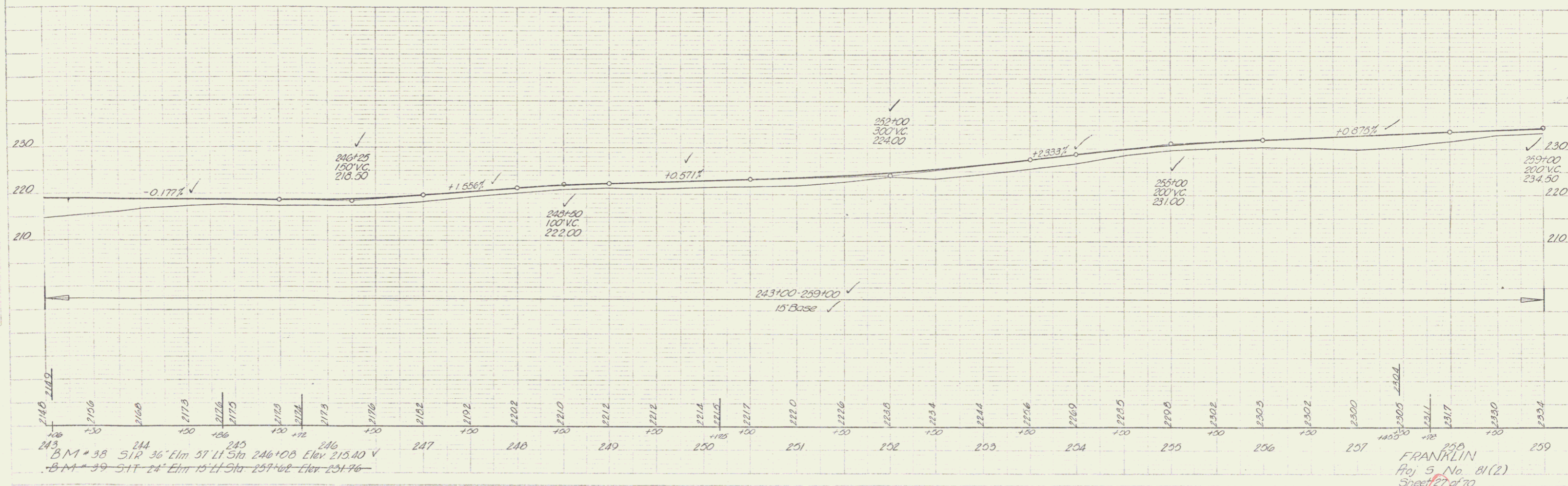
211 B.M. #33 SIR 30' Elm 20' RT Sta 211+02 Elev 230.75 ✓
 214 B.M. #34 Spot on Jay Boulter 120' LT Sta 219+18 Elev 221.87 ✓

FRANKLIN
 Proj 5 No 81(2)
 Sheet 23 of 70

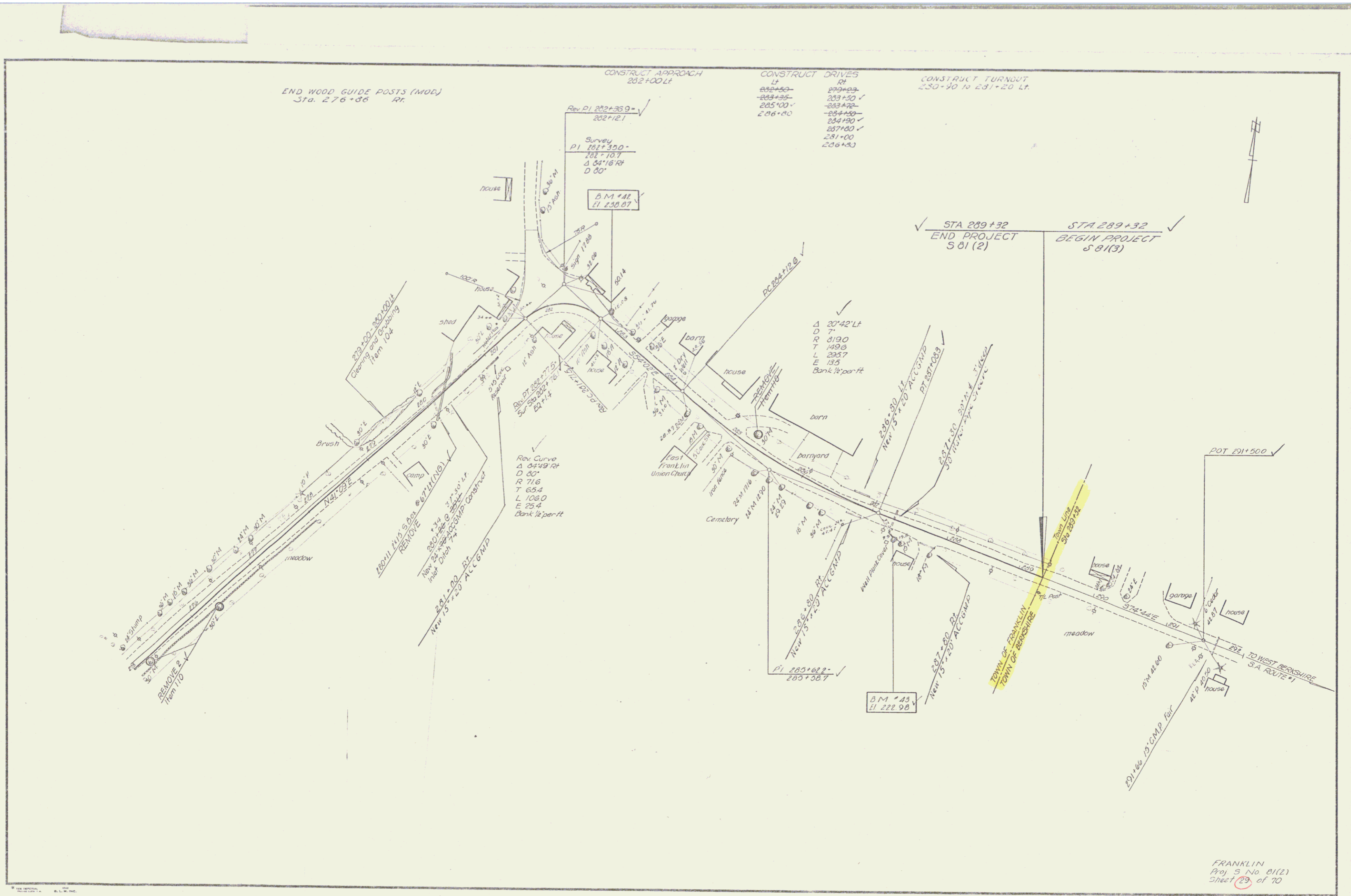
B
 4/29
 1103
 1/104
 11
 11



B
 4/29
 1103
 1/104



FRANKLIN
 Proj 5 No. 81(2)
 Sheet 27 of 70



END WOOD GUIDE POSTS (MOD)
Sta. 276+00 Rr.

CONSTRUCT APPROACH
282+00 LT

CONSTRUCT DRIVES

CONSTRUCT TURNOUT
250+00 TO 281+20 LT.

LT	RT
282+50	282+00
283+25	283+20
285+00	283+70
286+80	284+00
	287+80
	281+00
	286+80

Rev. PI 282+35.9
282+12.1

Survey
PI 281+30.0
282+10.7
Δ 34°18' RT
D 80'

B.M. #42
Elev 230.87

STA 289+32
END PROJECT
S 81(2)

STA 289+32
BEGIN PROJECT
S 81(3)

Rev. Curve
Δ 20°42' Lt
D 7'
R 819.0
T 149.6
L 235.7
E 13.5
Bank 1/2 per ft

B.M. #43
Elev 222.98

FRANKLIN
Proj. S No. 81(2)
Sheet 29 of 70