

INDEX OF SHEETS

SHEET NO	TITLE PAGE
1	TYPICAL CROSS-SECTION OF IMPROVEMENT (DOUBLE TACK COAT OF REFINED TAR WITH PEA STONE SEAL, ITEM 29A)
2	BANKING AND WIDENING TABLES
3	PLAN AND PROFILE
4	STANDARD STRUCTURE SHEET
5-28	PIPE CULVERTS
5-29	BOX CULVERTS
5-30A	BOUNDARY MARKERS
5-40	BARRICADES, SIGNS & LIGHTS
5-41	TYPICAL GRADING
29	CROSS SECTIONS

STANDARD STRUCTURE SHEETS  
 APPROVED BY THE CHIEF ENGINEER  
 VERMONT STATE DEPT. OF HIGHWAYS  
 S-28 APR. 25, 1941  
 S-30A APR. 19, 1941  
 S-40 DEC. 18, 1945

STATE OF VERMONT  
 STATE HIGHWAY DEPARTMENT

PLAN AND PROFILE OF PROPOSED  
 STATE HIGHWAY

SECONDARY PROJECT

TOWN OF FRANKLIN

MAIN STREET

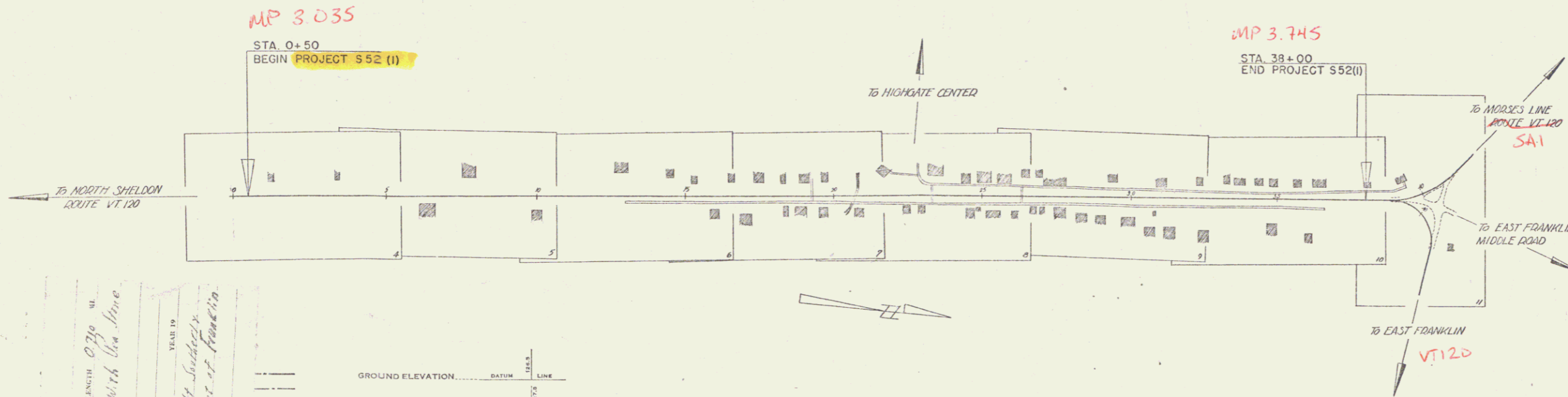
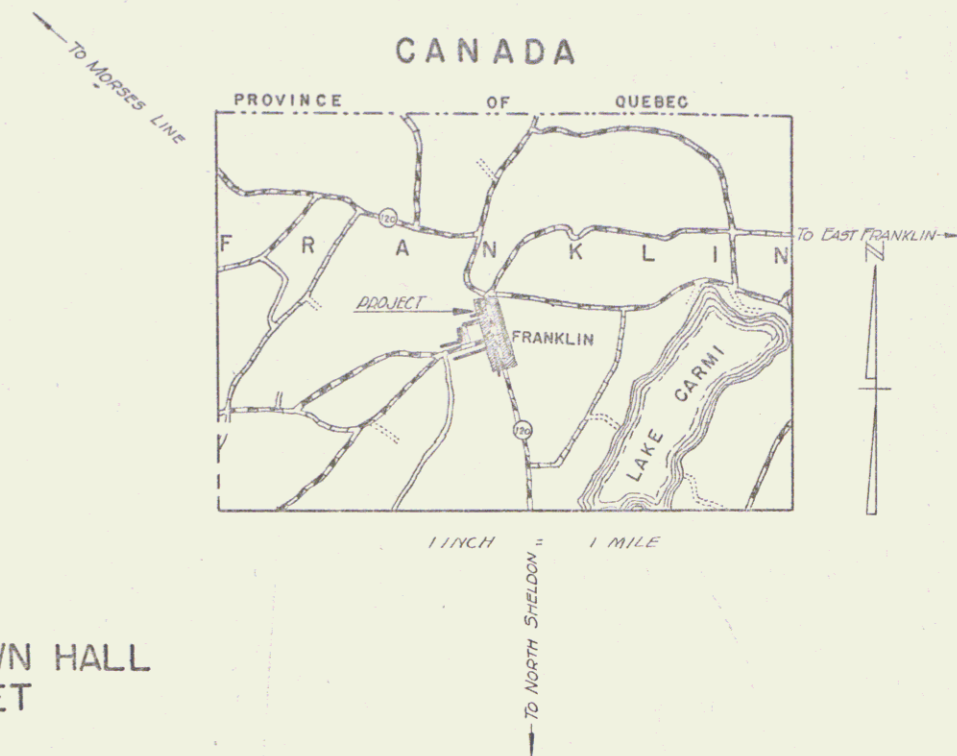
Pin # 992585

VERMONT ROUTE 120

BEGINNING AT A POINT APPROXIMATELY 3025 FEET SOUTHERLY FROM THE TOWN HALL  
 IN THE HAMLET OF FRANKLIN AND EXTENDING NORTHERLY 3750.0 FEET

LENGTH OF PROJECT 3750.0 FT. = 0.710 MILE

FED. ROAD DIST. NO.	STATE	PROJ. NO.	SHEET NO.	TOTAL SHEETS
9	VT.	52(1)	1	29



RIGHT-OF-WAY DIVISION  
 TOWN FILE  
 PERPETUAL  
 Town of VT 120  
 (To Be Returned To R.O.W. Division)

APPROVED: 17 May 1948  
H.E. August  
 COMMISSIONER OF HIGHWAYS

SUBMITTED BY ORDER OF THE STATE HIGHWAY BOARD

Date 5/14/1948

PROJECT Franklin  
 NUMBER 552(1) (Main Street) LENGTH 0.710 MI  
 THE PROPOSED MAIN STREET OF THE TOWN OF FRANKLIN  
 STARTING 3025 FEET SOUTHERLY FROM THE TOWN HALL

GROUND ELEVATION..... DATUM..... LINE  
 GRADE ELEVATION..... DATUM..... LINE

CURVE DATA  
 DEFLECTION ANGLE..... Δ  
 DEGREE OF CURVE..... D  
 RADIUS OF CURVE..... R  
 TANGENT DISTANCE..... T  
 LENGTH OF CURVE..... L  
 EXTERNAL DISTANCE..... E  
 POINT OF INTERSECTION..... P. I.  
 POINT OF CURVE..... P. C.  
 POINT OF TANGENT..... P. T.  
 POINT ON TANGENT..... P. O. T.

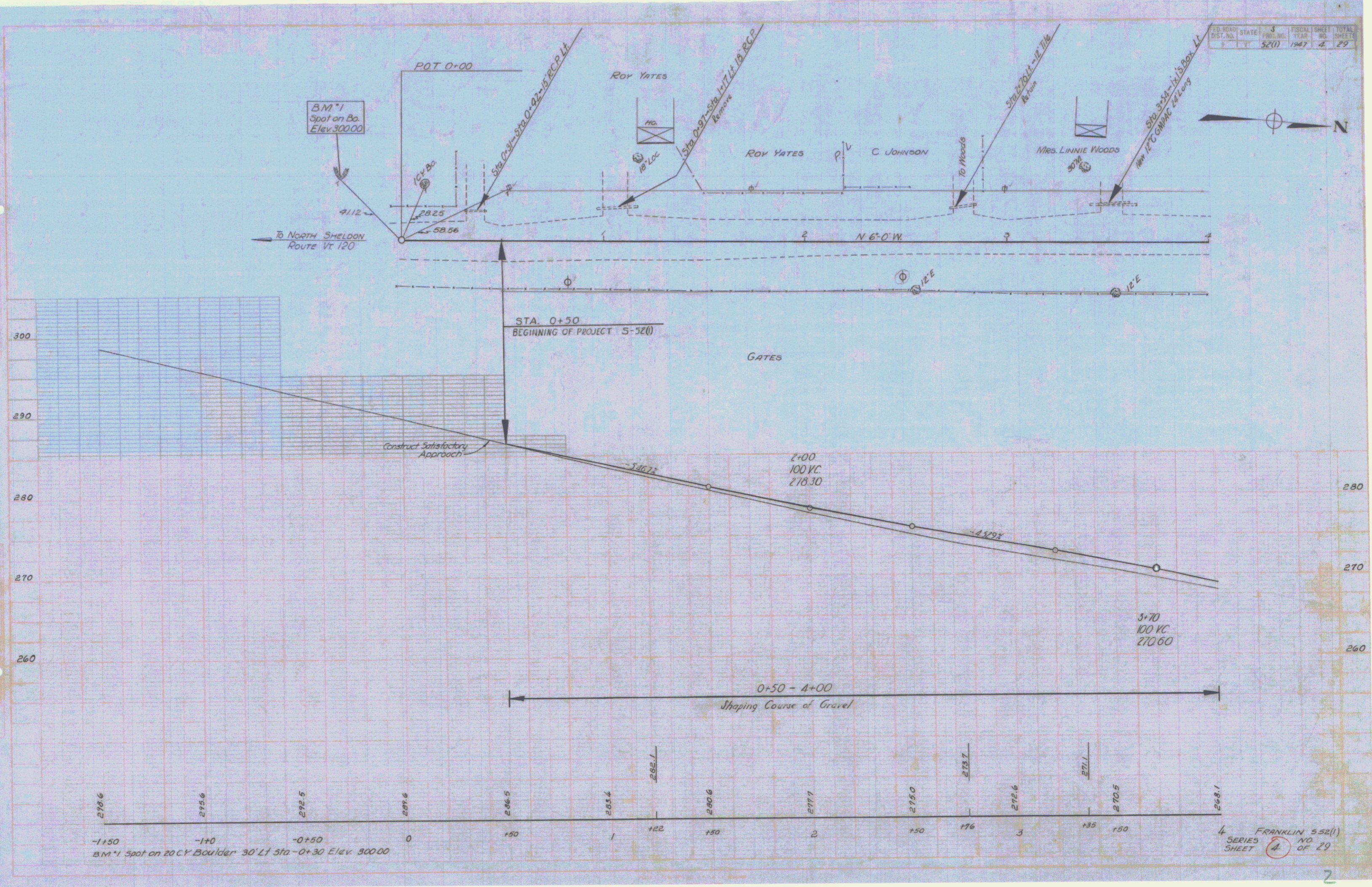
SCALES  
 TITLE..... 1" = 200'  
 TYPICAL..... 1" = 2'  
 PLAN..... 1" = 20'  
 PROFILE HORIZONTAL..... 1" = 20'  
 PROFILE VERTICAL..... 1" = 5'  
 CROSS SECTIONS..... 1" = 5'

THESE PLANS ARE SUBJECT TO SUCH REVISIONS AS MAY BE  
 REQUIRED BY THE PUBLIC ROADS ADMINISTRATION OR THE COM-  
 MISSIONER OF HIGHWAYS.  
 CONSTRUCTION IS TO BE CARRIED ON IN ACCORDANCE WITH  
 THE PLANS AND THE STANDARD ROAD AND BRIDGE SPECIFICATIONS  
 OF 1936 AS APPROVED DECEMBER 23RD, 1936 BY THE PUBLIC  
 ROADS ADMINISTRATION, INCLUDING ALL SUBSEQUENT APPROVED  
 REVISIONS AND SUCH REVISED SPECIFICATIONS AND SPECIAL  
 PROVISIONS AS ARE SUBMITTED WITH THE PLANS.

APPROVED: May 14, 1948  
H.E. August  
 DISTRICT HIGHWAY COMMISSIONER

SERIES 5 No. 52(1) FILED  
 SHEET 1 OF 29

FD. ROAD DIST. NO.	STATE	PROJECT NO.	FISCAL YEAR	SHEET NO.	TOTAL SHEETS
5	Vt	5200	1947	4	29

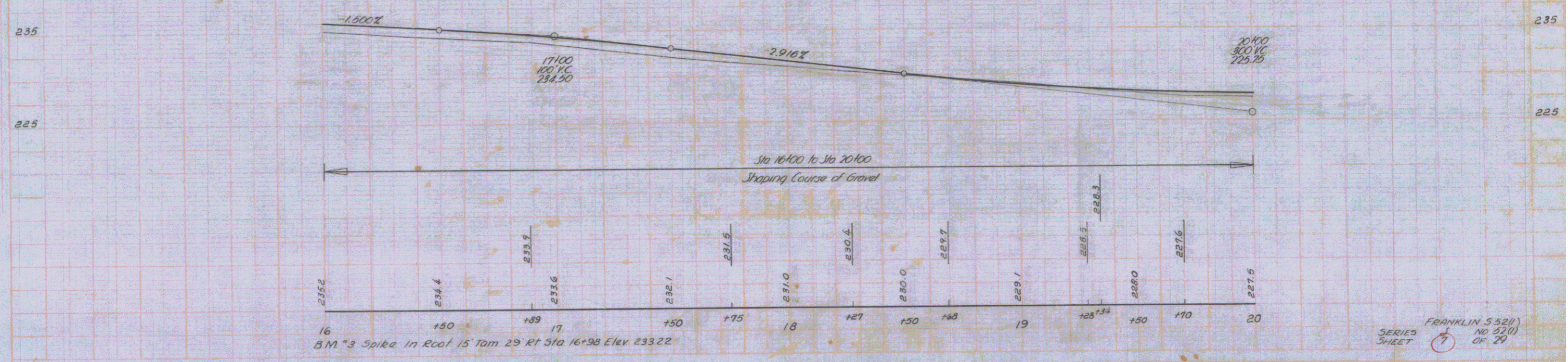
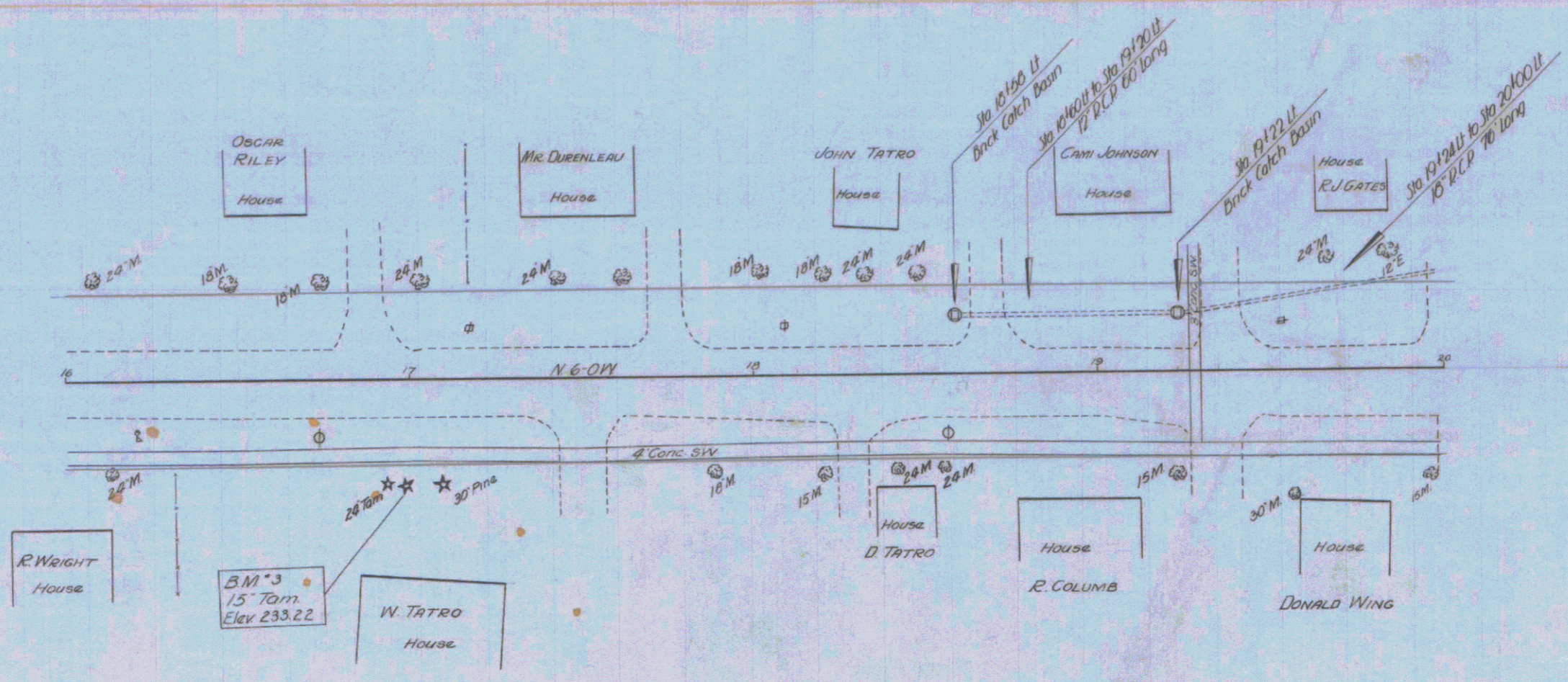


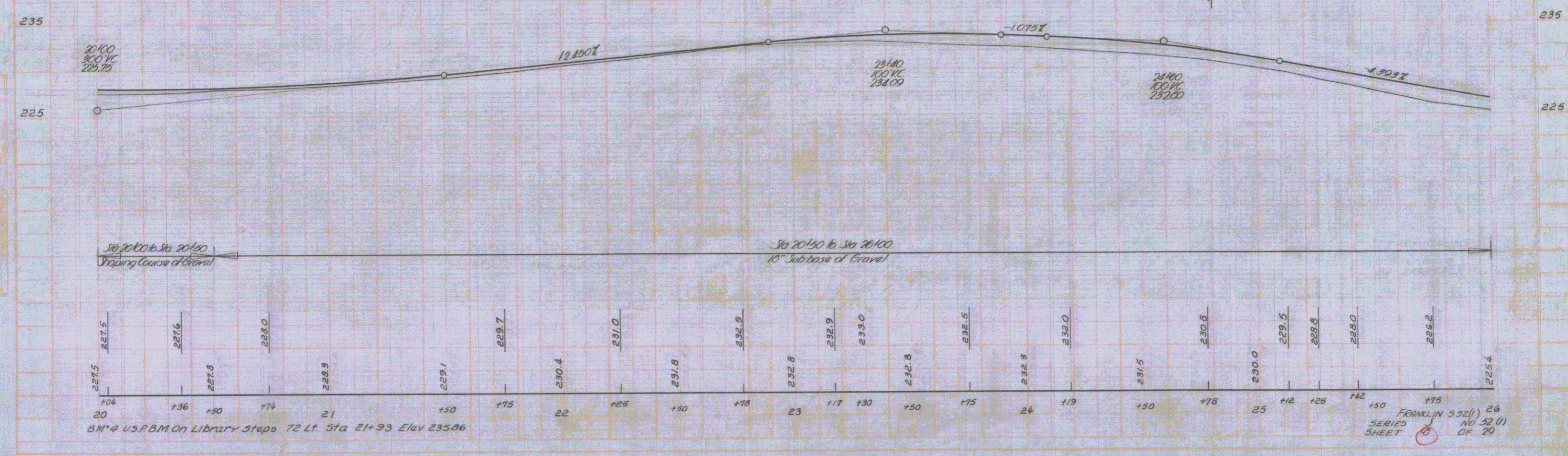
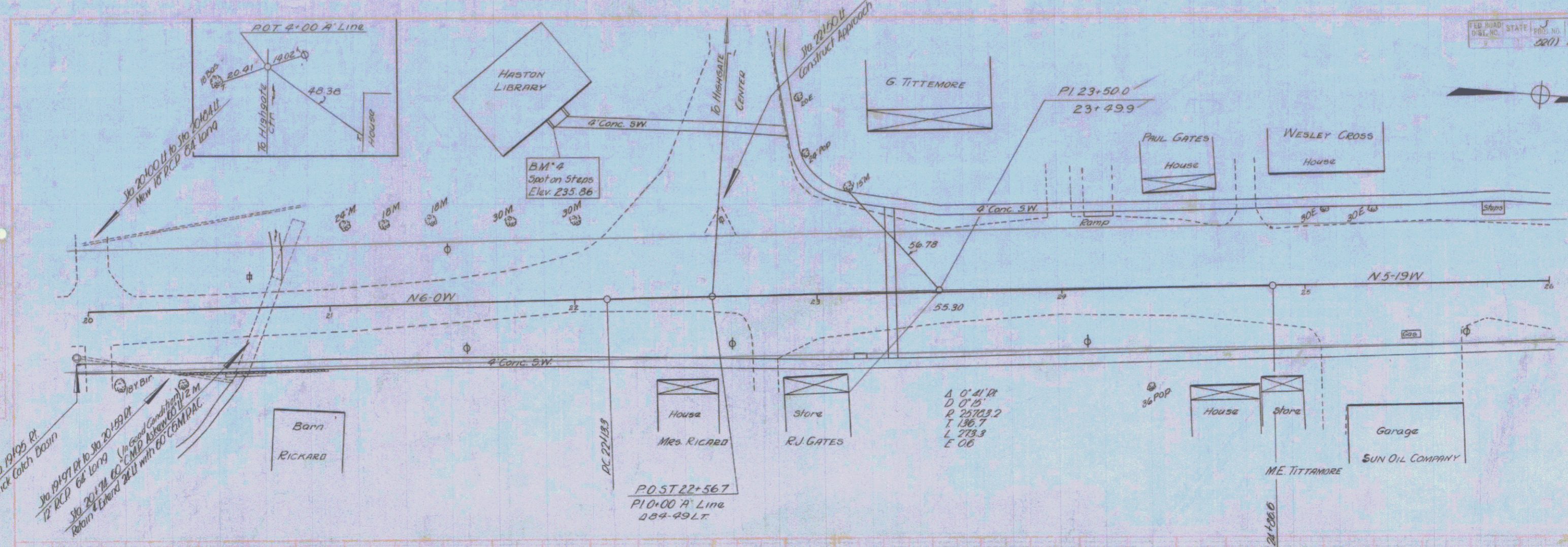
B.M. 1 Spot on 20' CY Boulder 30' Lt Sta -0+30 Elev. 300.00

FRANKLIN 552(1)  
NO. 4  
SERIES SHEET OF 29





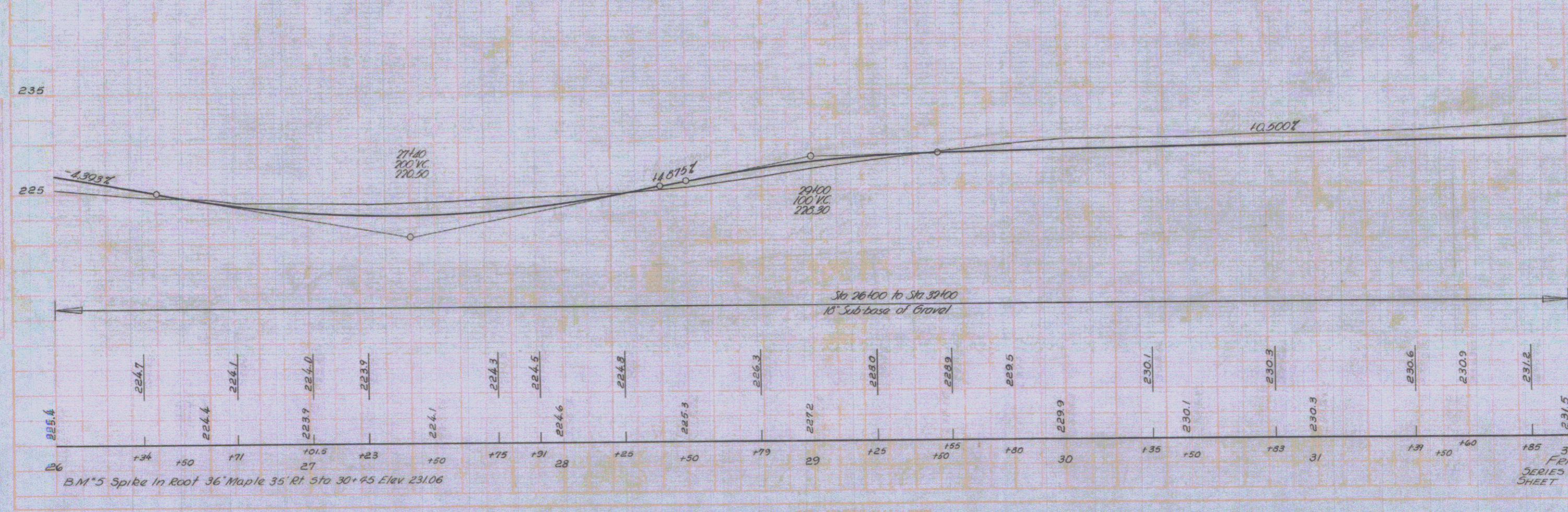
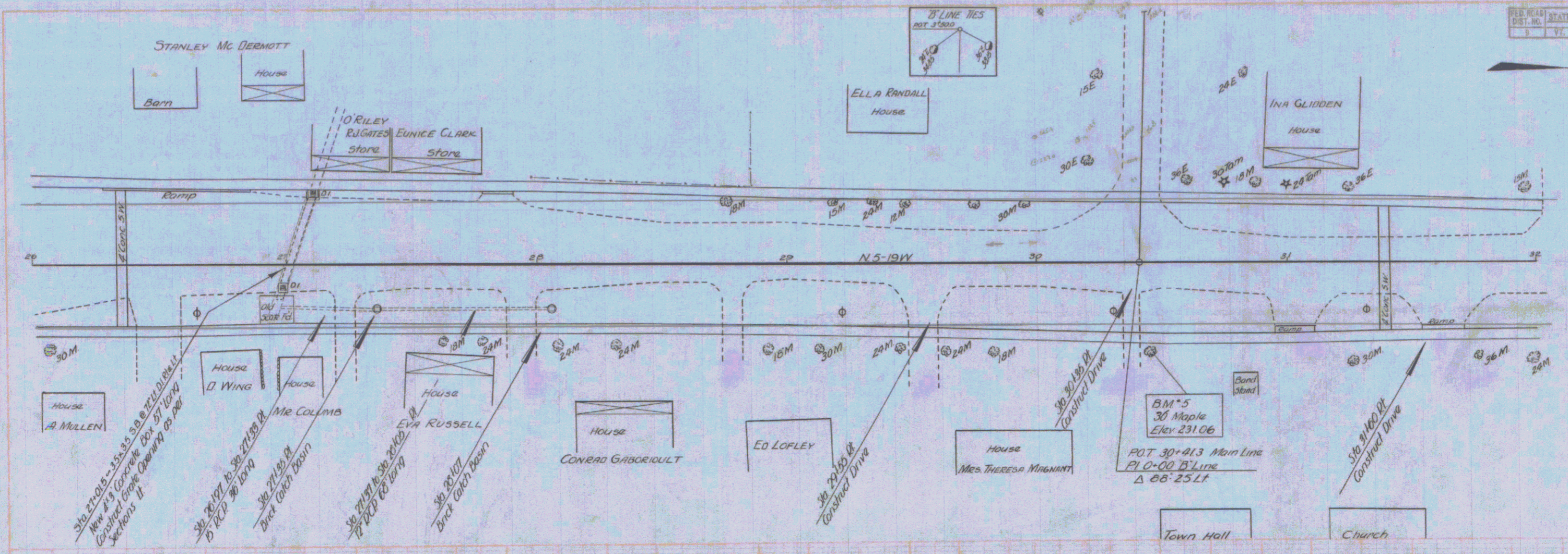




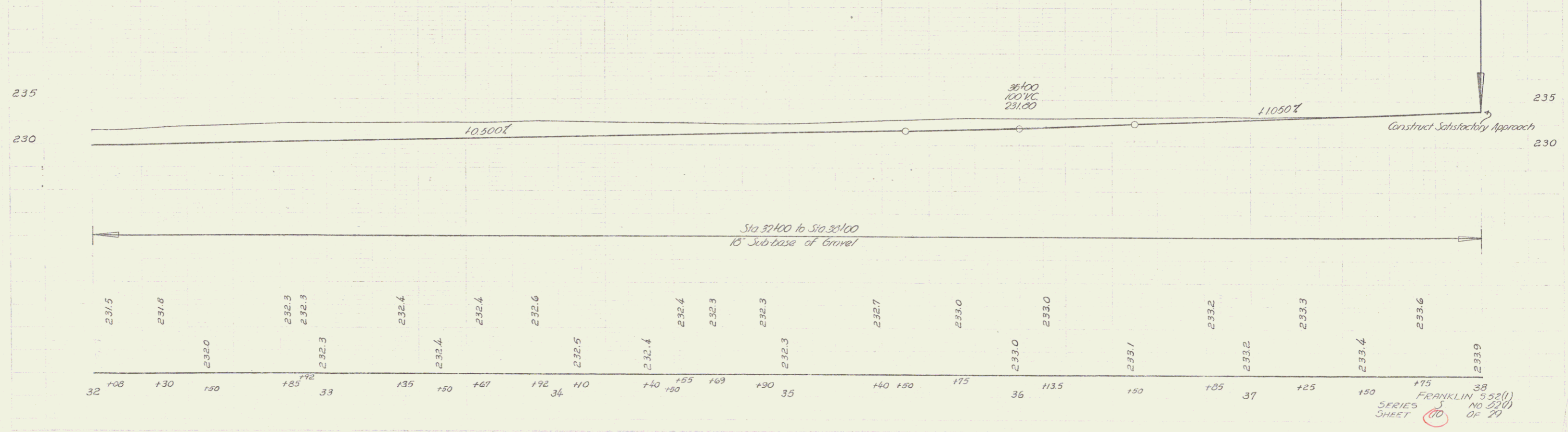
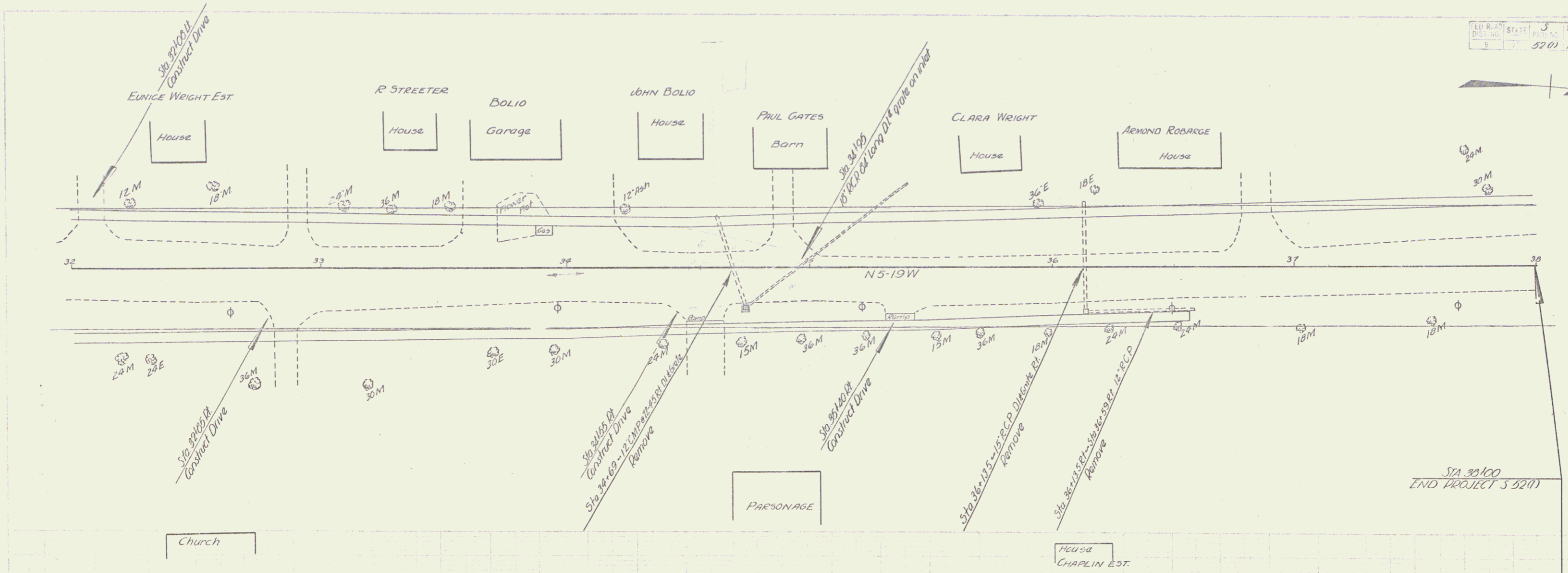
Sta 19100 Pt  
 Brick Catch Basin  
 Sta 20100 to Sta 20150  
 12' R.C.D. 6' Long  
 Sta 20150 to Sta 20100  
 12' R.C.D. 6' Long  
 (Use good quality material 1/2 M.  
 Return (Embed 24") with 60 COMPACT.

BM #2 U.S.P.M. on Library Steps 72 Lt. Sta 21+93 Elev 235.86

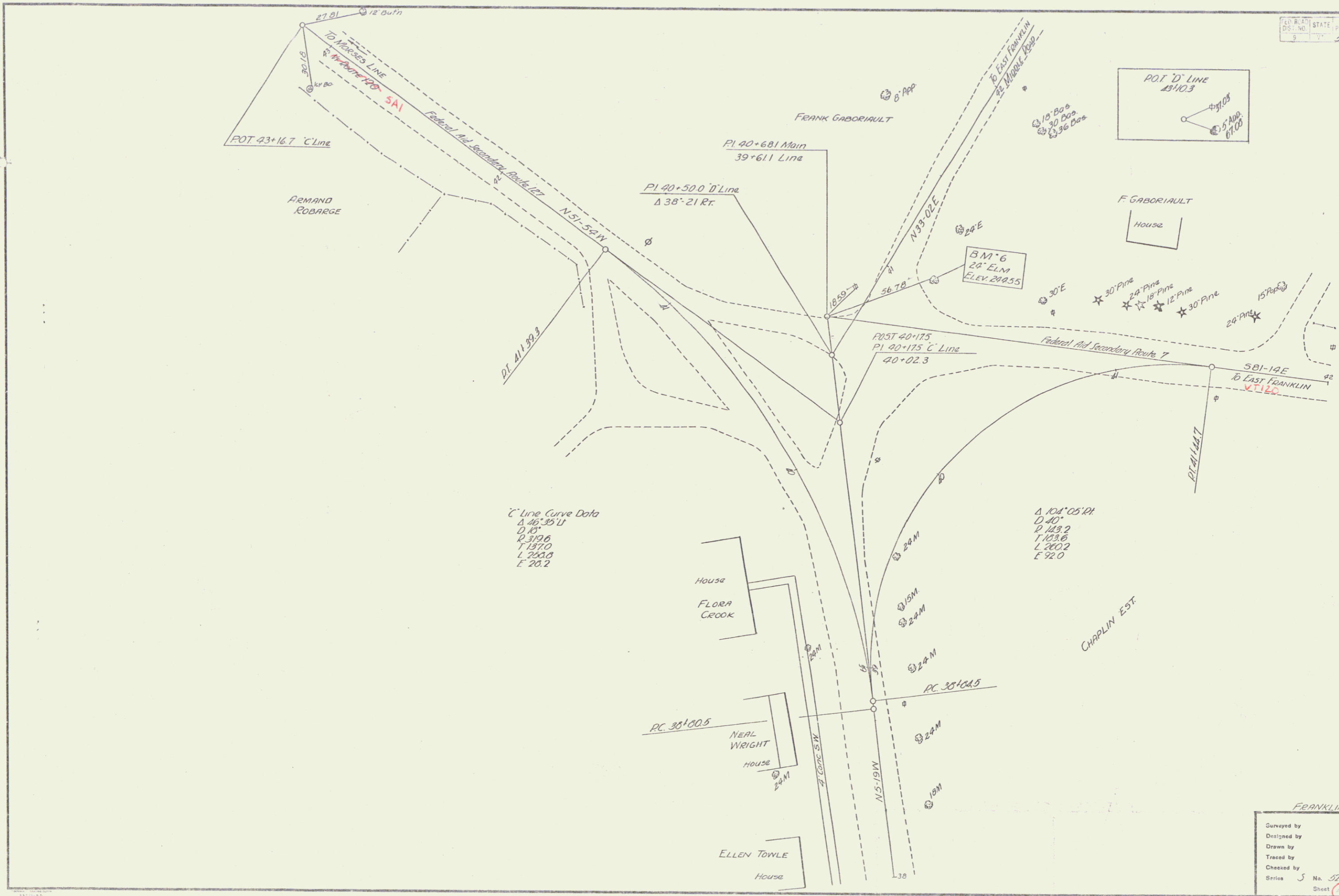
FRANKLIN 532(1) 26  
 SERIES NO 32(1)  
 SHEET OF 20



B.M.\*5 Spike In Roof 36 Maple 35 Rt Sta 30+25 Elev 231.06



8



C Line Curve Data  
 Δ 46° 35' 11"  
 D 40'  
 R 319.6  
 T 197.0  
 L 250.0  
 E 20.2

Δ 104° 05' 11"  
 D 40'  
 P 123.2  
 T 103.8  
 L 200.2  
 E 92.0

FRANKLIN 552(1)

Surveyed by	
Designed by	
Drawn by	
Traced by	
Checked by	
Series 5	No. 57(1)
Sheet 11	of 29
Filed	