

INDEX OF SHEETS

SHEET NO. 1	TITLE PAGE
2	TYPICAL CROSS-SECTION OF IMPROVEMENT
3	BANKING AND WIDENING TABLES
4	CONSTRUCTION DETAILS DRAINAGE AND MARKERS
5	CONSTRUCTION DETAILS CD-NO. 1 DITCHES
6	QUANTITY SHEET (ITEMS)
7	QUANTITY SHEET (DRAINAGE)
8-9	EARTHWORKS
10-13	PLAN AND PROFILE
14	STANDARD STRUCTURE SHEET S-40 BARRICADES SIGNS AND LIGHTS
15-22	CROSS SECTIONS

STANDARD STRUCTURE SHEET APPROVED BY THE CHIEF ENGINEER
VERMONT HIGHWAY DEPARTMENT
S 40 JUNE 10, 1950

STATE OF VERMONT
STATE HIGHWAY DEPARTMENT

PLAN AND PROFILE OF PROPOSED
STATE HIGHWAY

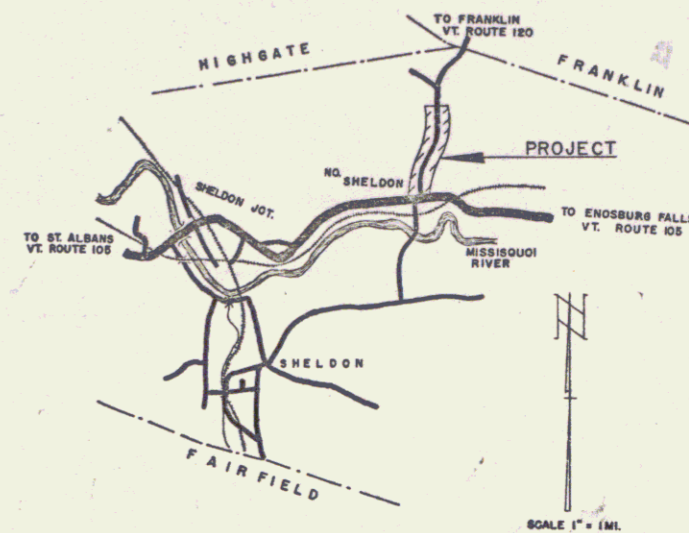
TOWN OF SHELDON
COUNTY OF FRANKLIN
SHELDON-FRANKLIN ROAD
VERMONT ROUTE 120

BEGINNING AT THE INTERSECTION OF VERMONT ROUTES 105 AND 120 AND EXTENDING NORTHERLY 4950.0 FEET.

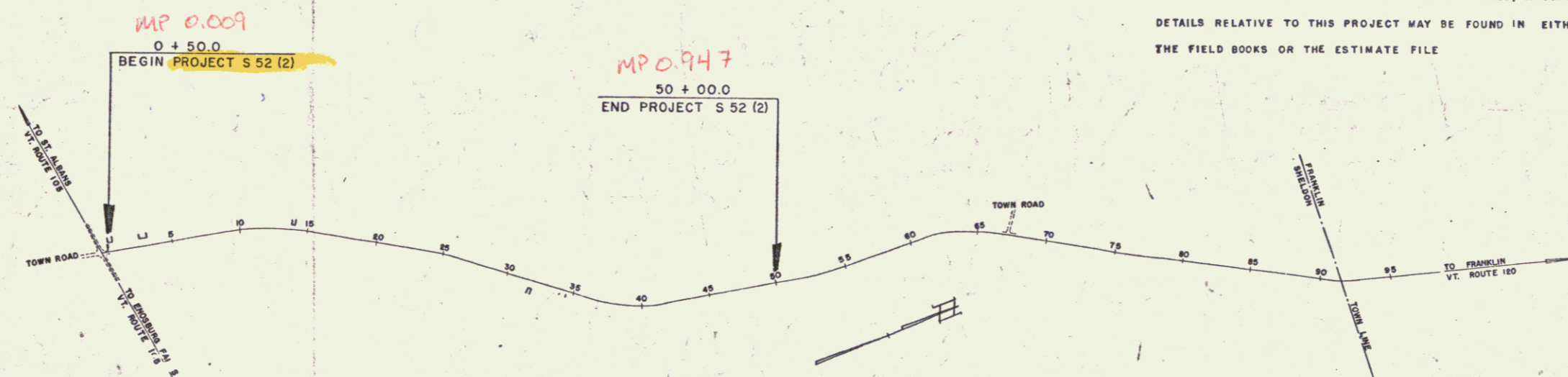
LENGTH OF PROJECT 4950.0 FT. = 0.938 MI.

NOTE— ANY FURTHER INFORMATION CONCERNING FINAL QUANTITIES, AMOUNTS OR OTHER DETAILS RELATIVE TO THIS PROJECT MAY BE FOUND IN EITHER THE FIELD BOOKS OR THE ESTIMATE FILE

FED. ROAD DIV. NO.	STATE	PROJ. NO.	FISCAL YEAR	SHEET NO.	TOTAL SHEETS
1	VT.	S 52(2)	WAB	1	22



VT 120



RIGHT-OF-WAY DIVISION
TOWN FILE
PERPETUAL
Town of VT 120
(To Be Returned To R.O.W. Division)

APPROVED: JULY 2, 1951
H.E. August
CHIEF ENGINEER

SUBMITTED BY ORDER OF THE STATE HIGHWAY BOARD

Date 5/25/1951

SHELDON CONTRACTOR CALEDONIA SAND & GRAVEL
RECORD PLANS
CONSTRUCTION COMPLETED 6-21-52

GROUND ELEVATION	DATUM	LINE
GRADE ELEVATION	DATUM	TYPE

CURVE DATA

DEFLECTION ANGLE Δ
DEGREE OF CURVE D
RADIUS OF CURVE R
TANGENT DISTANCE T
LENGTH OF CURVE L
EXTERNAL DISTANCE E
POINT OF INTERSECTION P. I.
POINT OF CURVE P. C.
POINT OF TANGENT P. T.
POINT ON TANGENT P. O. T.

SCALES

TITLE	1" = 500'
TYPICAL	1" = 2'
PLAN	1" = 50'
PROFILE HORIZONTAL	1" = 50'
PROFILE VERTICAL	1" = 10'
CROSS SECTIONS	1" = 5'

PROJECT NAME AND NUMBER
SHELDON S 52(2)

TYPE PAVEMENT AREA
BIT. TR. GRAVEL 11,167 SY.

RECORD PLANS MATERIALS

SUB-BASE OF GRAVEL	LOCAL (LAROSE PIT)
REIN. CONC. PIPE	VT. CONC. PIPE CO. MONTPELIER, VT.
REFINED TAR	TRIMOUNT BIT. PROD- EVERETT, MASS.
CUTBACK ASPHALT	SOCONY OIL CO.-E. PROV., R.I.
PEA STONE	SWANTON LIME WORKS-SWANTON, VT.
PERF BIT. FIBRE DRAIN PIPE	ORANGEBURG MFG. CO.-ORANGEBURG, N.Y.

CONTRACTOR - CALEDONIA SAND & GRAVEL
RES. ENGINEER - H. G. GAREJS
RECORD PLANS - P. F. KARR

CONTRACT DATED 10-5-51
STARTED 10-12-51
COMPLETED 6-21-52
ACCEPTED 6-21-52

THESE PLANS ARE SUBJECT TO SUCH REVISIONS AS MAY BE REQUIRED BY THE BUREAU OF PUBLIC ROADS OR THE COMMISSIONER OF HIGHWAYS.

CONSTRUCTION IS TO BE CARRIED ON IN ACCORDANCE WITH THE PLANS AND THE STANDARD ROAD AND BRIDGE SPECIFICATIONS OF 1948, AS APPROVED JULY 25 1949 BY THE BUREAU OF PUBLIC ROADS INCLUDING ALL SUBSEQUENT APPROVED REVISIONS AND SUCH REVISED SPECIFICATIONS AND SPECIAL PROVISIONS AS ARE SUBMITTED WITH THE PLANS.

DEPARTMENT OF COMMERCE
BUREAU OF PUBLIC ROADS

RECOMMENDED FOR APPROVAL

DISTRICT ENGINEER	DATE
APPROVED	
DIVISION ENGINEER	DATE

APPROVED: JULY 2, 1951
H.E. August
HIGHWAY ENGINEER

APPROVED: May 25, 1951
P.F. Karr
DISTRICT ENGINEER

PROJECT S NO. 52 (2) FILED
SHEET 1 OF 22

6

Construct Drives	
4130	19125
20700	

PLAN	DATE	BY
DESIGNED	1938	L. W. HURLEY
CHECKED		L. W. HURLEY
NOTE BOOK		
NO.		

PROFILE	DATE	BY
DESIGNED	1938	L. W. HURLEY
CHECKED		L. W. HURLEY
NOTE BOOK		
NO.		

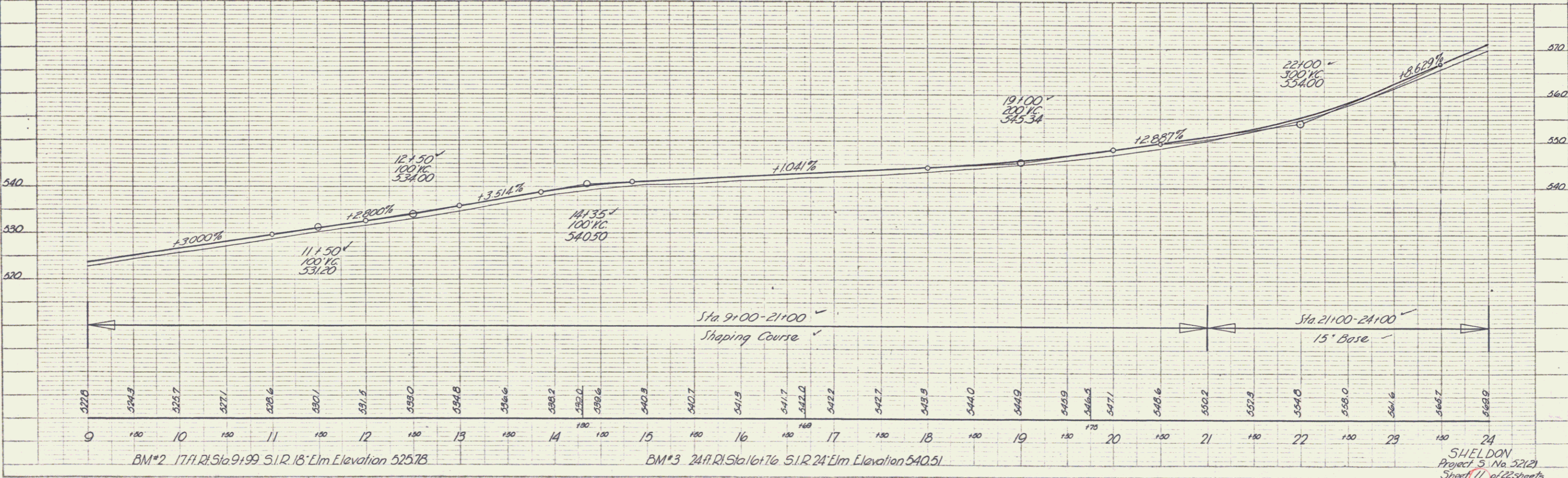
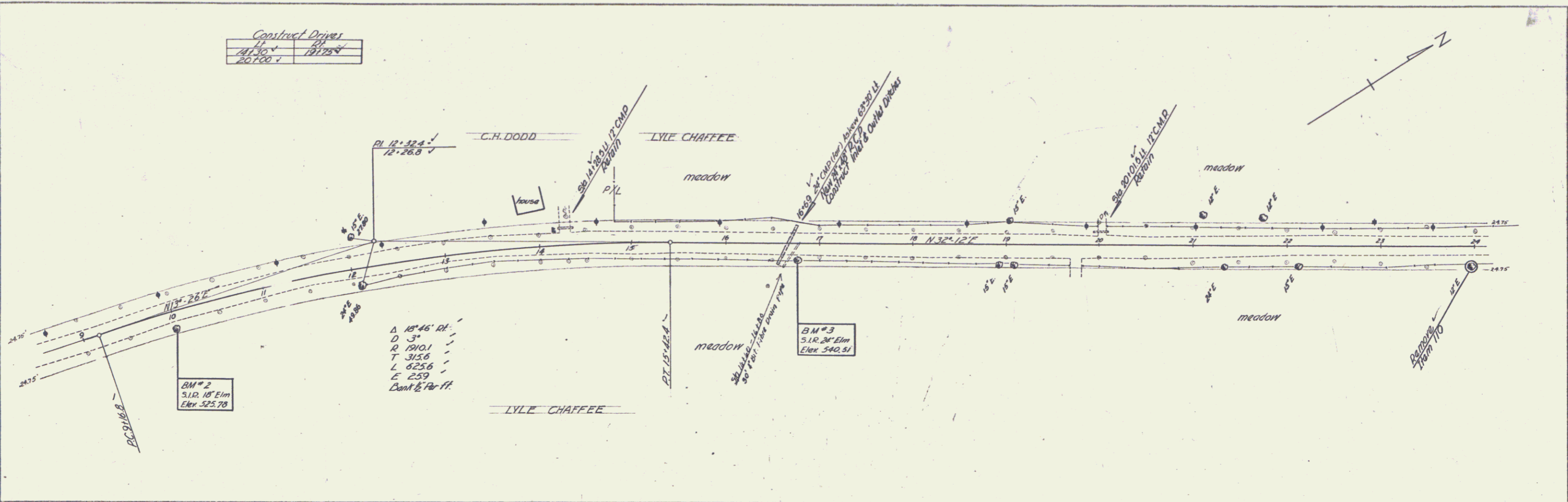
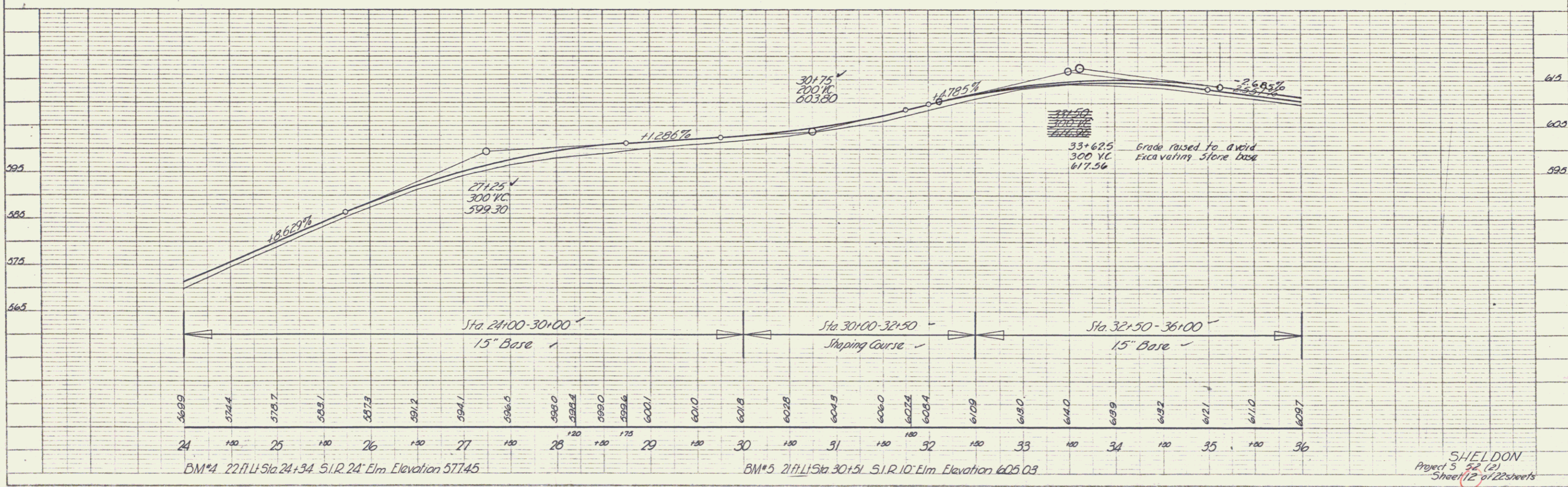
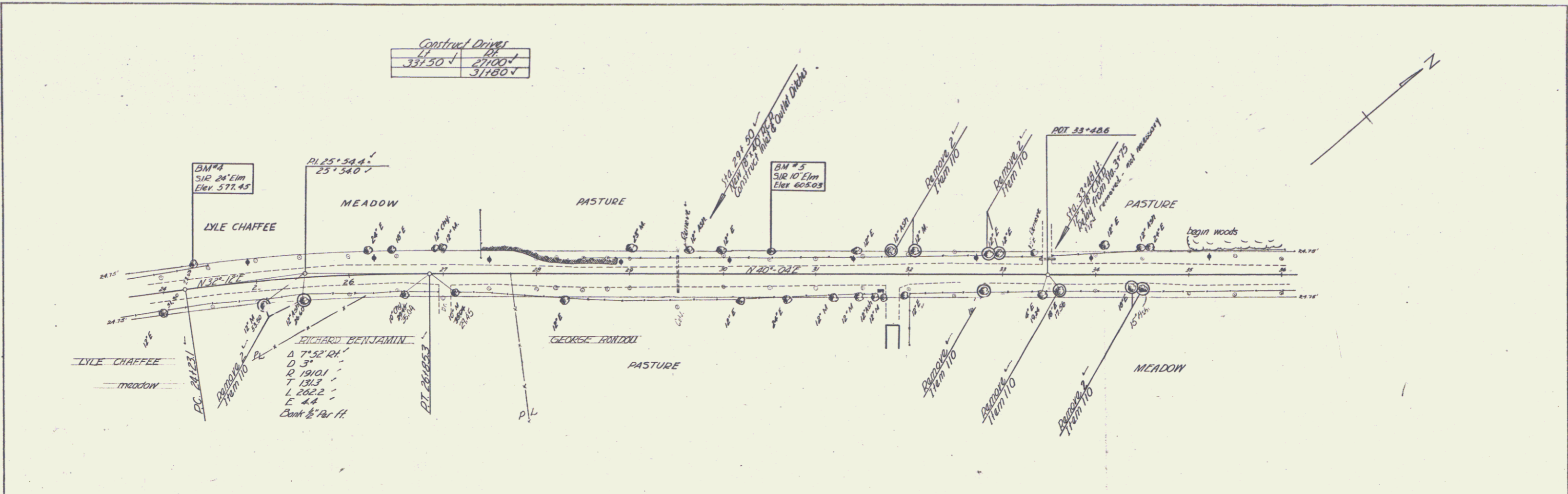


PLATE 1 - PLAN PROFILE
 SHELDON PROJECT 5, No. 52(2)
 Sheet 11 of 22 sheets

PLAN	REVISED	DATE	BY
PLATTED	1/28	1917	Hurlby
NOTE BOOK	BY	DATE	BY
BY	DATE	BY	DATE

PROFILE	REVISED	DATE	BY
PLATTED	1/28	1917	Hurlby
NOTE BOOK	BY	DATE	BY
BY	DATE	BY	DATE

Contract Drivers	
33+50	27100
31+80	31180



SHIELDON
Project 5 52 (2)
Sheet 12 of 22 sheets

PLATE 1 - PLAN PROFILE & P. & R. & E. STATIONS
RECEIVED & EXAMINED
P. & R. & E. NO. 345-10

