

INDEX OF SHEETS

SHEET NO.	TITLE
1	TITLE PAGE
2	TYPICAL CROSS SECTION OF IMPROVEMENT (DOUBLE TACK COAT OF REFINED TAR) WITH PEASTONE SEAL
3	BANKING TABLE, ROADWAY STANDARD RS 56-1
4	QUANTITY SHEET (ITEMS & DRAINAGE)
5-6	EARTHWORK SHEETS
7	ROADWAY STANDARD SHEET RS 56-3
8	" " " " RS 56-4
9	" " " " RS 56-6
10	" " " " RS 56-9
11	" " " " RS 56-10
12	" " " " RS 56-12
13-16	PLAN & PROFILE SHEETS
17-37	CROSS SECTION SHEETS

PROJECT NAME AND NUMBER	TYPE	PAY AREA
HANCOCK ST 187 (N)	DOUBLE TACK PEASTONE 12,013 S.V.	
GRAVEL - 5044 RT & North Bridge Pt	SAND SEAL - Lambert Pitt, Sharon Vt.	
TAR - 5044 RT & Rochester Vt	ACCOMP. - NE. Metal Pipe Corp. Boston Mass.	
TAR - 5044 RT & Seawater, N.J.	RCP - Vermont Pipe Pipe Co. Windsor Vt.	
CONTRACTS - 5044 RT & Moulton Lebanon N.H.	CONTRACT DATED July 20 1956	
RESIDUE ENGINEER - Earle F. Lane	CONTRACT STARTED August 13 1956	
INSPECTOR - Shank	CONTRACT COMPLETED August 6, 1957	
DESIGNER - Earle F. Lane	CONTRACT ACCEPTED August 6, 1957	

STATE OF VERMONT  
DEPARTMENT OF HIGHWAYS

PROPOSED IMPROVEMENT

FEDERAL AID  
SECONDARY PROJECT

TOWN OF HANCOCK

COUNTY OF ADDISON

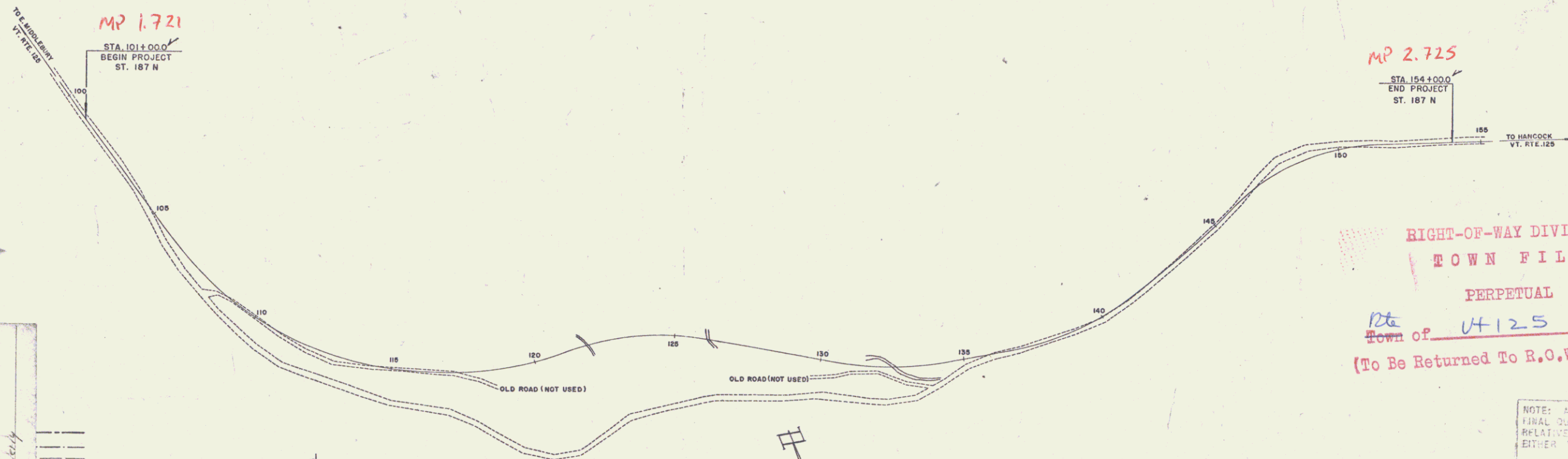
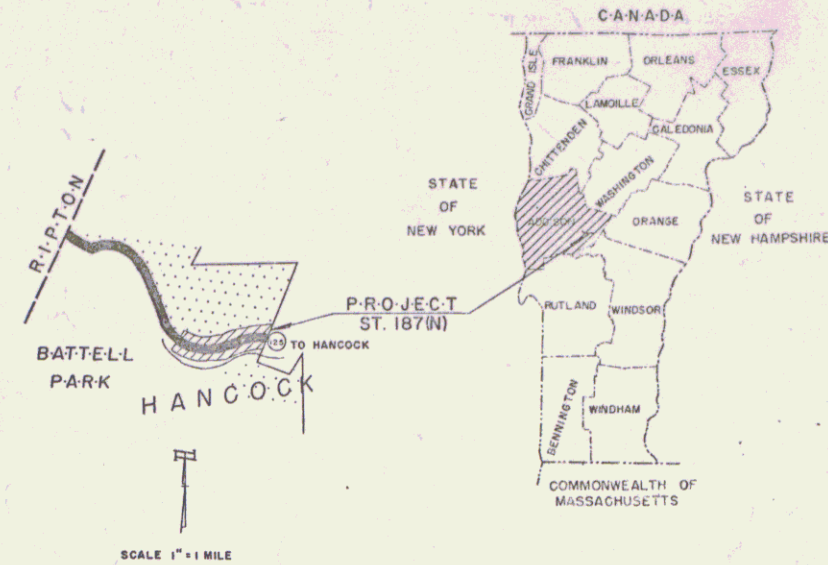
VERMONT ROUTE 125

E. MIDDLEBURY - HANCOCK RD.

BEGINNING AT A POINT APPROXIMATELY 9,240.0 FEET SOUTHEASTERLY OF THE HANCOCK - RIPTON TOWN LINE AND EXTENDING 5,300.0 FEET SOUTHEASTERLY.

LENGTH OF PROJECT 5,300.0 = 10.04 MILES

FED. ROAD DISTRICT NO.	STATE	PROJECT NO.	SHEET NO.	TOTAL SHEETS
1	VT	ST. 187 N	1	37



RIGHT-OF-WAY DIVISION  
TOWN FILE  
PERPETUAL  
Rte 125  
Town of UH 125  
(To Be Returned To R.O.W. Division)

NOTE: ANY FURTHER INFORMATION CONCERNING FINAL QUANTITIES, AMOUNTS OR OTHER DETAILS RELATIVE TO THIS PROJECT MAY BE FOUND IN EITHER THE FIELD BOOKS OR THE ESTIMATE FILE.

GROUND ELEVATION	DATUM	LINE
GRADE ELEVATION	DATUM	LINE

CURVE DATA	
DEFLECTION OF ANGLE	Δ
DEGREE OF CURVE	D
RADIUS OF CURVE	R
TANGENT DISTANCE	T
LENGTH OF CURVE	L
EXTERNAL DISTANCE	E
POINT OF INTERSECTION	P.I.
POINT OF CURVE	P.C.
POINT OF TANGENT	P.T.
POINT ON TANGENT	P.O.T.
POINT ON SUB-TANGENT	P.O.S.T.

SCALES	
TITLE	1" = 200'
TYPICAL	1" = 2'
PLAN	1" = 50'
PROFILE HORIZONTAL	1" = 50'
PROFILE VERTICAL	1" = 10'
CROSS-SECTIONS	1" = 5'

THESE PLANS ARE SUBJECT TO SUCH REVISIONS AS MAY BE REQUIRED BY THE BUREAU OF PUBLIC ROADS OR THE COMMISSIONER OF HIGHWAYS.  
CONSTRUCTION IS TO BE CARRIED ON IN ACCORDANCE WITH THE PLANS AND THE STANDARD SPECIFICATIONS FOR HIGHWAY AND AND BRIDGE CONSTRUCTION OF JANUARY 1956 SUBMITTED TO THE BUREAU OF PUBLIC ROADS FOR APPROVAL ON APRIL 9, 1956, INCLUDING ALL SUBSEQUENT APPROVED REVISIONS AND SUCH REVISED SPECIFICATIONS AND SPECIAL PROVISIONS AS ARE SUBMITTED WITH THE PLANS.

APPROVED <i>R. Bailey</i> CONSTRUCTION ENGINEER DATE July 9 1956	APPROVED <i>D. W. Blair</i> SECONDARY ENGINEER DATE June 7 1956	APPROVED <i>J. P. Perkins</i> DISTRICT ENGINEER DATE June 7 1956	APPROVED <i>W. W. Stewart</i> HIGHWAY ENGINEER DATE July 9 1956	APPROVED <i>H. E. Stewart</i> ENGINEER DATE July 9 1956 SUBMITTED BY ORDER OF THE STATE HIGHWAY BOARD
--	---	--	---	--

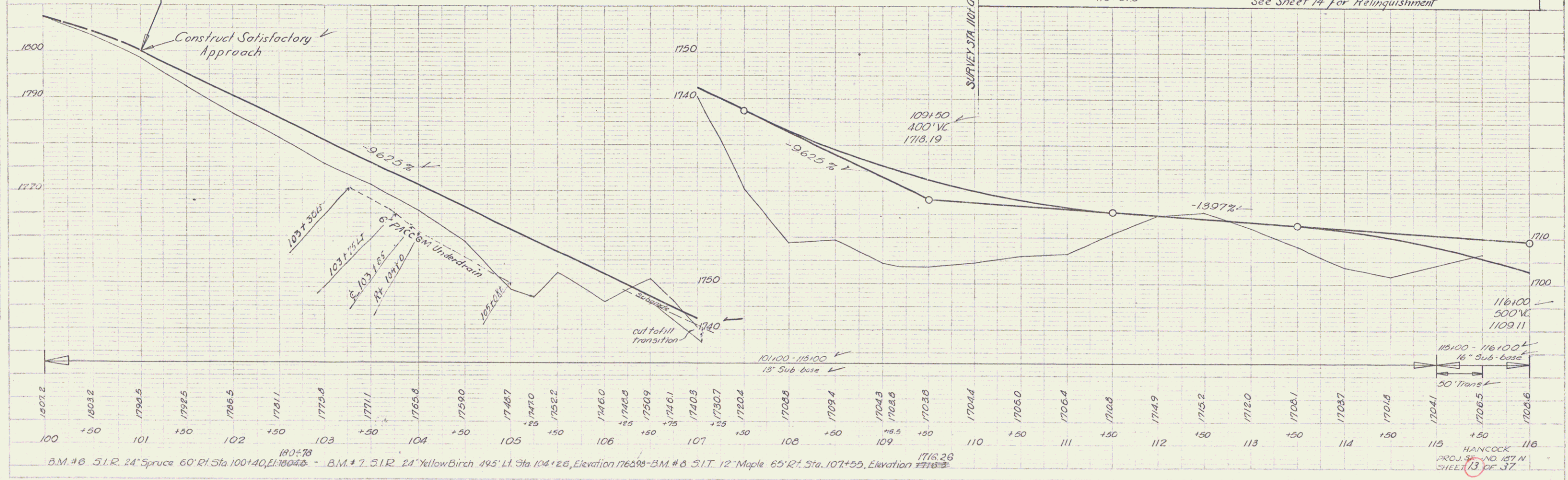
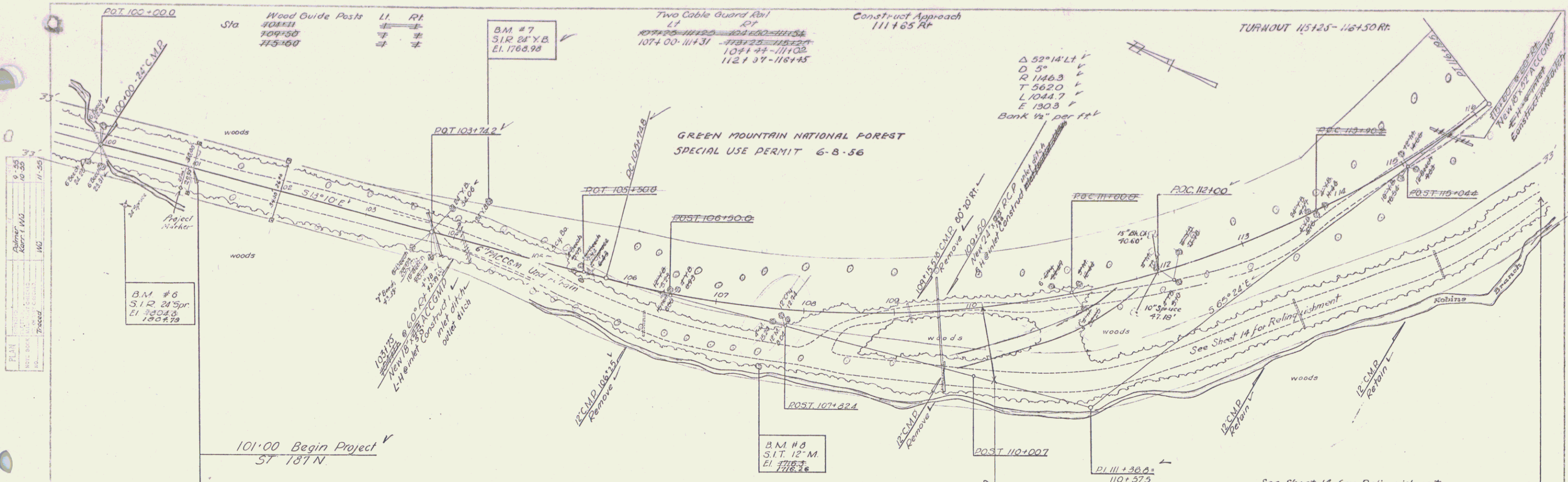
DEPARTMENT OF COMMERCE  
BUREAU OF PUBLIC ROADS

Pin # 992582

APPROVED \_\_\_\_\_  
DISTRICT ENGINEER DATE \_\_\_\_\_

PROJECT ST NO. 187 N

SHEET 1 OF 37 SHEETS



PLM  
0-55  
10-25  
11-35

Admirer  
Admirer  
Admirer

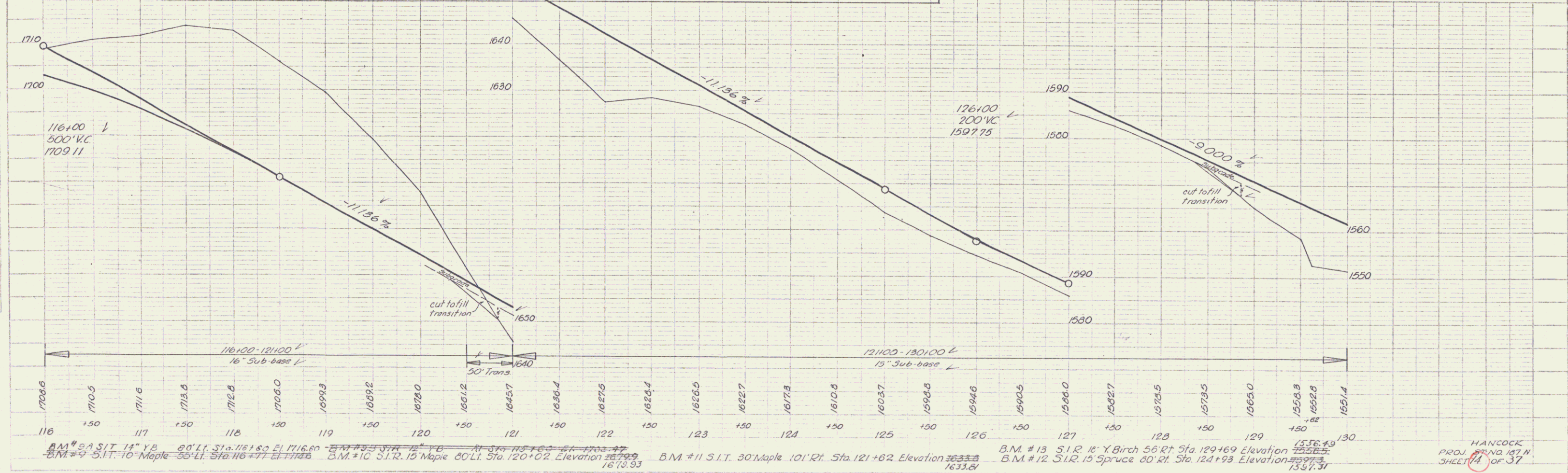
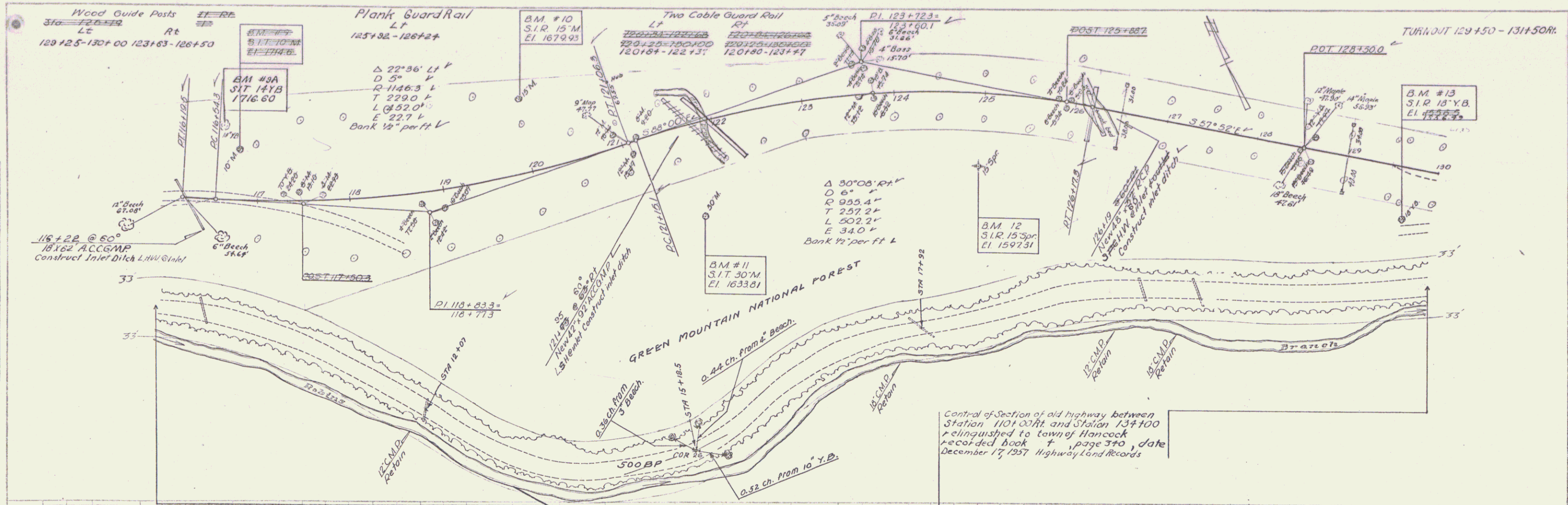
11-35

0-55  
10-25  
11-35

Admirer  
Admirer  
Admirer

B.M. #6 S.I.R. 24' Spruce 60' Rt. Sta. 100+40, El. 1780.48 - B.M. #7 S.I.R. 24' Yellow Birch 49.5' Lt. Sta. 104+26, Elevation 1765.98 - B.M. #8 S.I.T. 12' Maple 65' Rt. Sta. 107+55, Elevation 1716.26

HANCOCK  
PROJECT NO. 187 N  
SHEET 13 OF 37

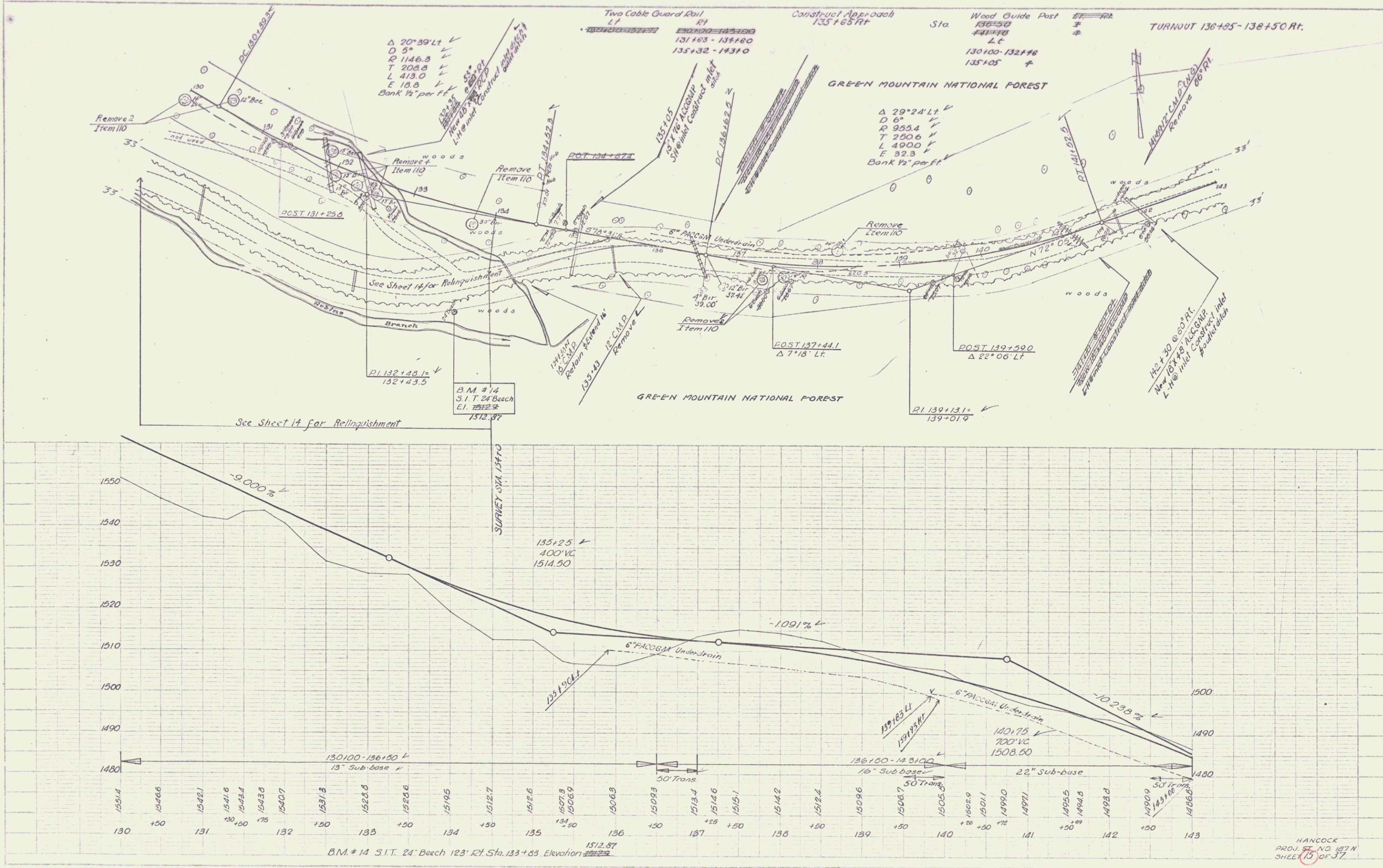


PLAN  
 DATE: 12-55  
 DRAWN: K.W.  
 CHECKED: W.G.

PROFILE  
 DATE: 12-55  
 DRAWN: K.W.  
 CHECKED: W.G.

9-55  
 12-55  
 Palmer  
 No. 1  
 142

9-55  
 12-55  
 Palmer  
 No. 1  
 142



HANCOCK  
 PROJ. NO. 87N  
 SHEET 15 OF 37

