

$\Delta$  14° 33' RT.  
 D 3'  
 R 1910.1  
 T 243.8  
 L 485.0  
 E 15.5

$\Delta$  37° 26' LT.  
 D 6'  
 R 955.4  
 T 323.7  
 L 623.9  
 E 53.3

$\Delta$  45° 59' RT.  
 D 18'  
 R 319.6  
 T 135.1  
 L 255.5  
 E 27.6

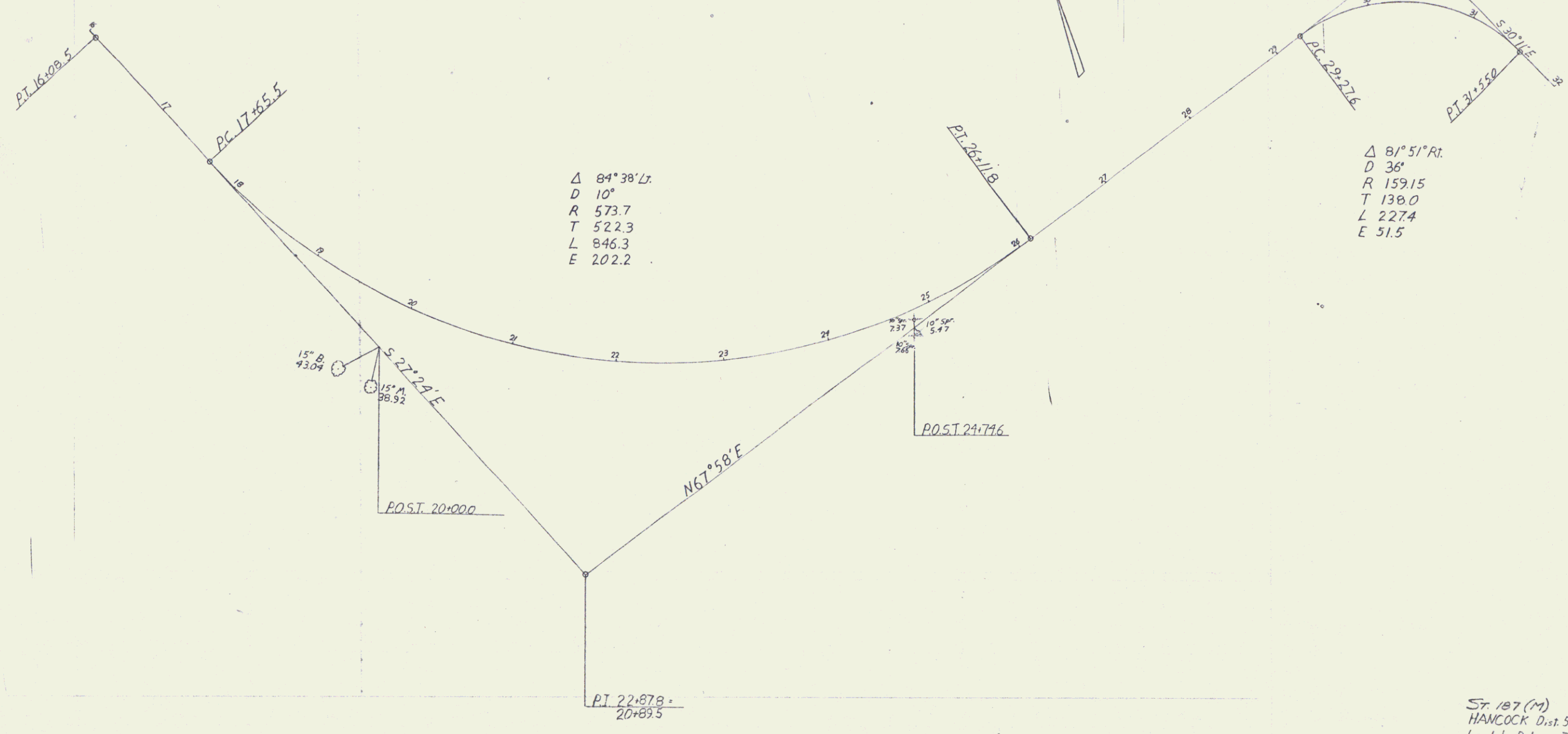
Town of Hancock

RIGHT-OF-WAY DIVISION  
 TOWN FILE  
 PERPETUAL  
 Vt. Rte # 125  
 (To Be Returned To R.O.W. Division)  
 MP 0.00 - 1.72

Project No.  
 57.157(M)  
 HANCOCK Dist. 5  
 Levels by Palmer 7-56  
 Plotted by Grant 8-56  
 Traced by Grant

Pin # 992581

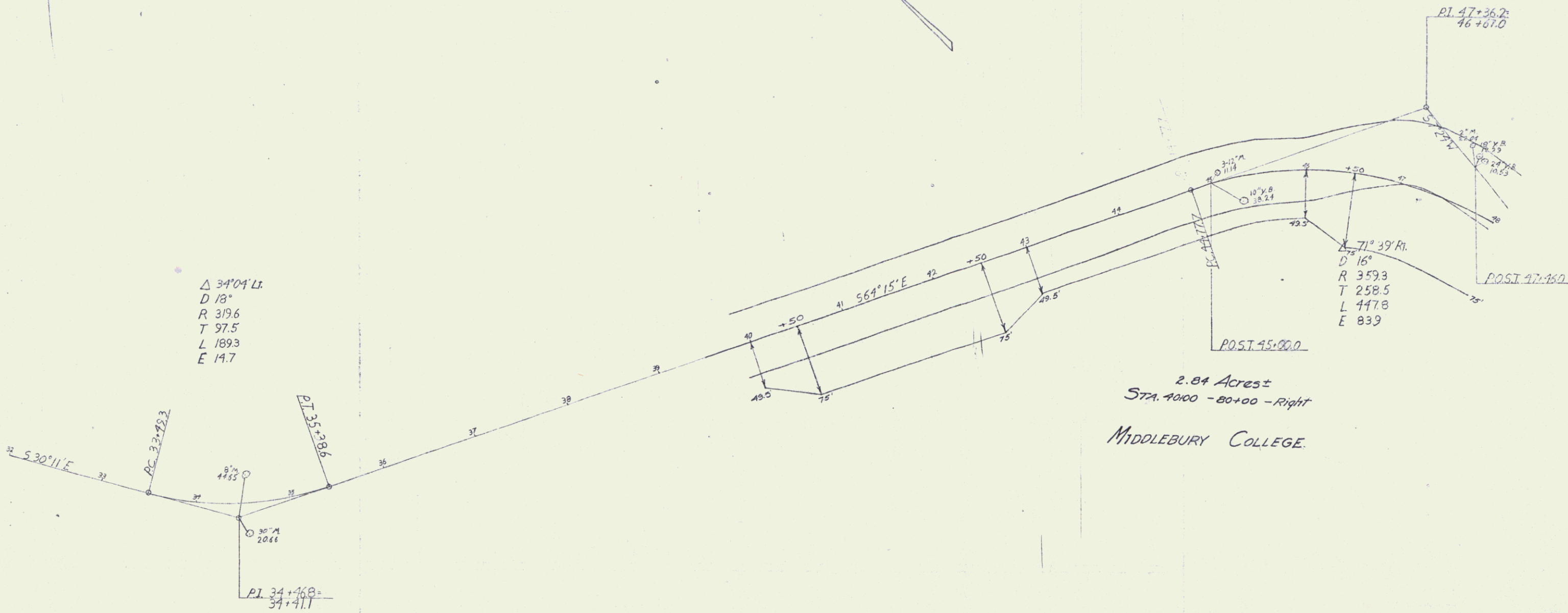
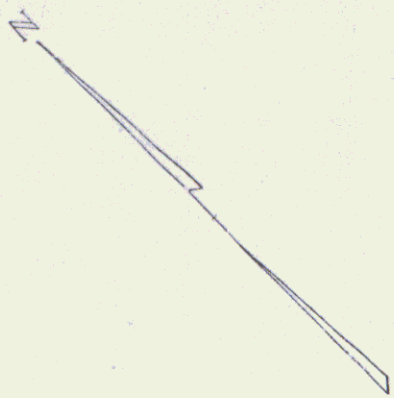
SHEET 1 118/56



$\Delta$  84° 38' Lt  
 D 10°  
 R 573.7  
 T 522.3  
 L 846.3  
 E 202.2

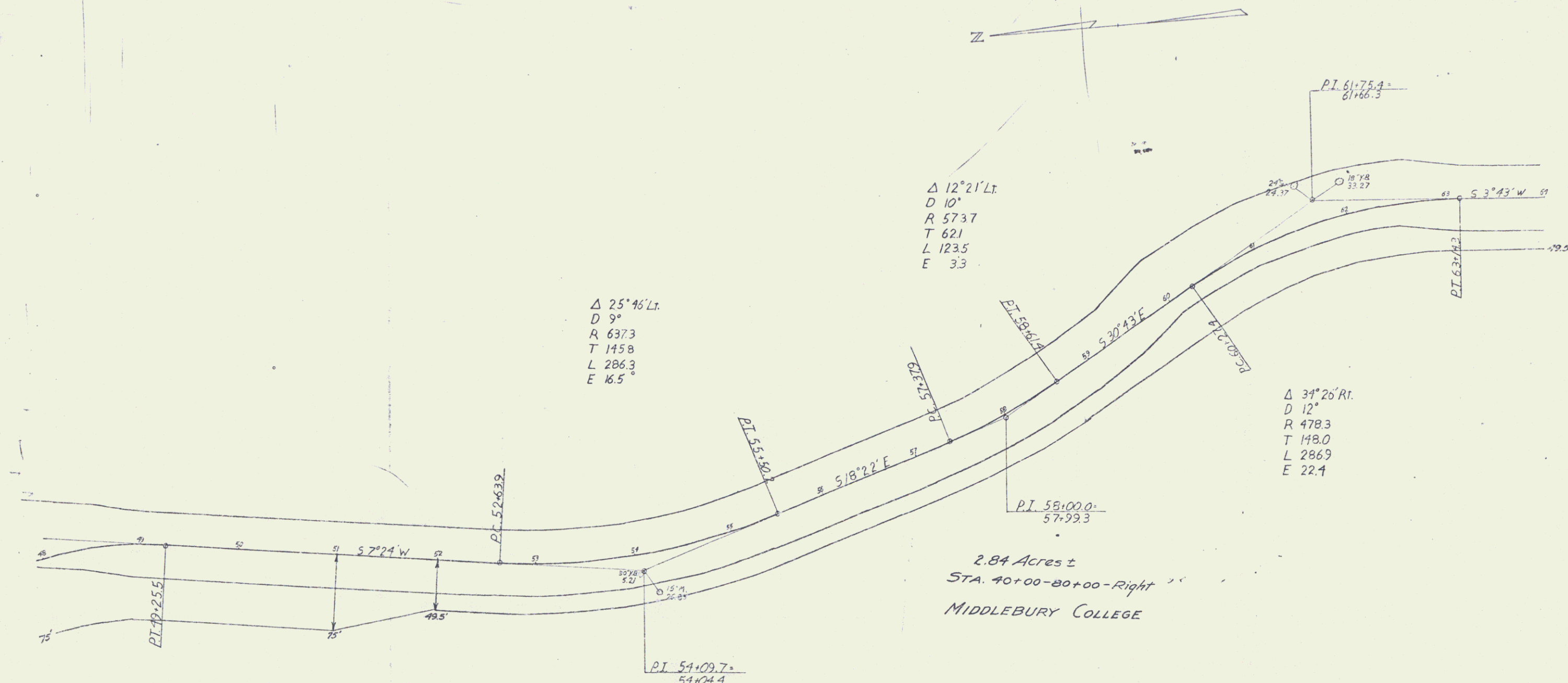
$\Delta$  81° 51' Rt  
 D 36°  
 R 15915  
 T 1380  
 L 227.4  
 E 51.5

ST 187 (M)  
 HANCOCK Dist 5  
 Levels by Palmer 7-56  
 Plotted by Grant 8-56  
 Traced by Grant  
 SHEET 2



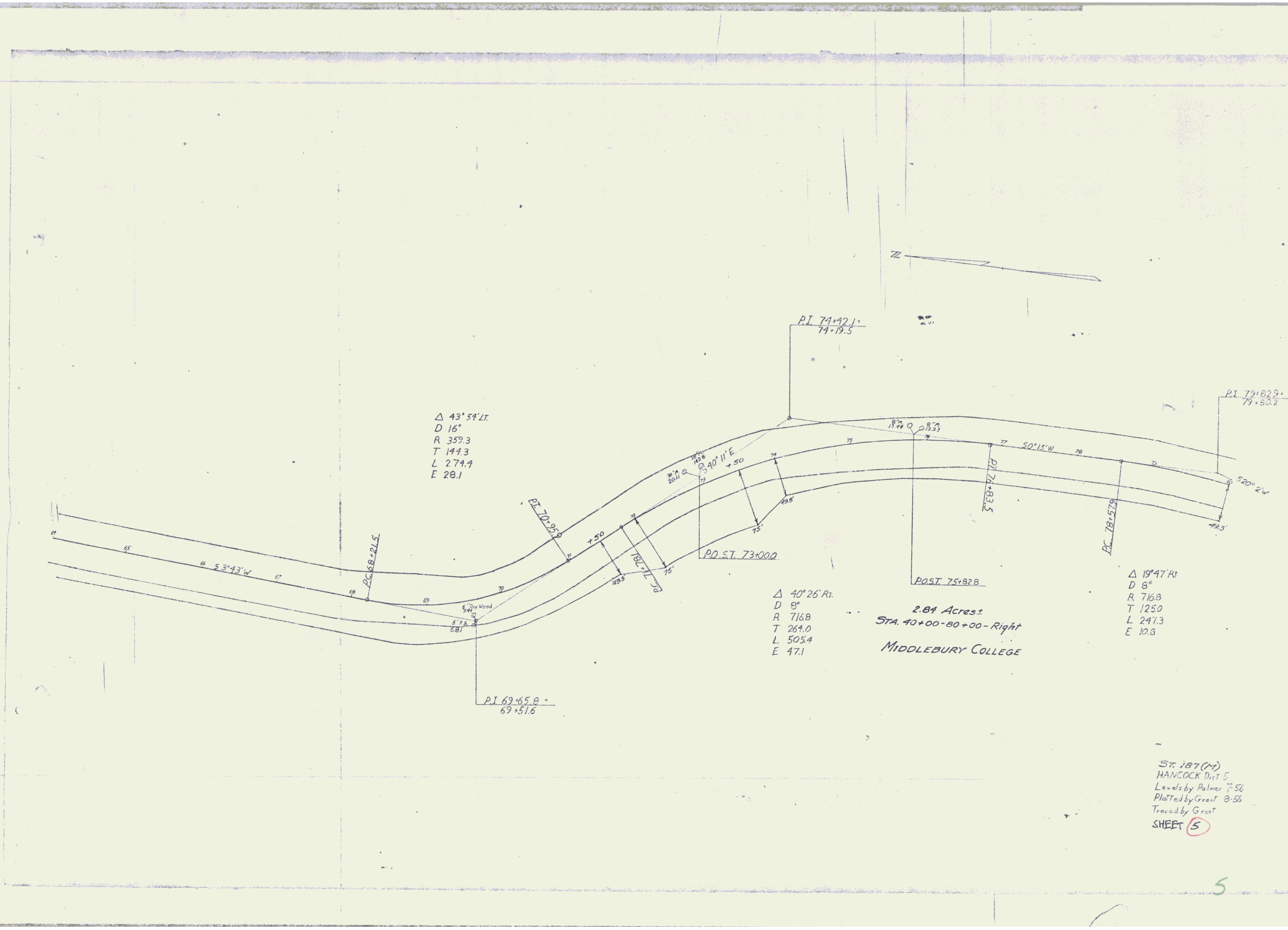
2.84 Acres ±  
STA. 40+00 - 80+00 - Right  
MIDDLEBURY COLLEGE.

S: 187 (M)  
HANCOCK Dist 5  
Levels by Palmer 7-56  
Plotted by Grant 8-56  
Traced by Grant  
SHEET 3



2.84 Acres ±  
 STA. 40+00-80+00-Right  
 MIDDLEBURY COLLEGE

Sr. 187 (M)  
 HANCOCK Dist. 5  
 Levels by Palmer 7-56  
 Plotted by Grant 8-56  
 Traced by Grant  
 SHEET 4



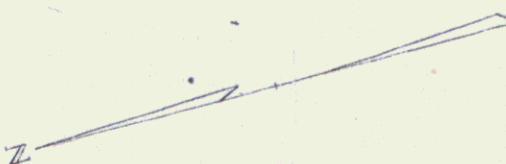
$\Delta$  43° 54' Lt.  
 D 16'  
 R 359.3  
 T 144.3  
 L 274.4  
 E 28.1

$\Delta$  40° 26' Rt.  
 D 8'  
 R 716.8  
 T 264.0  
 L 505.4  
 E 47.1

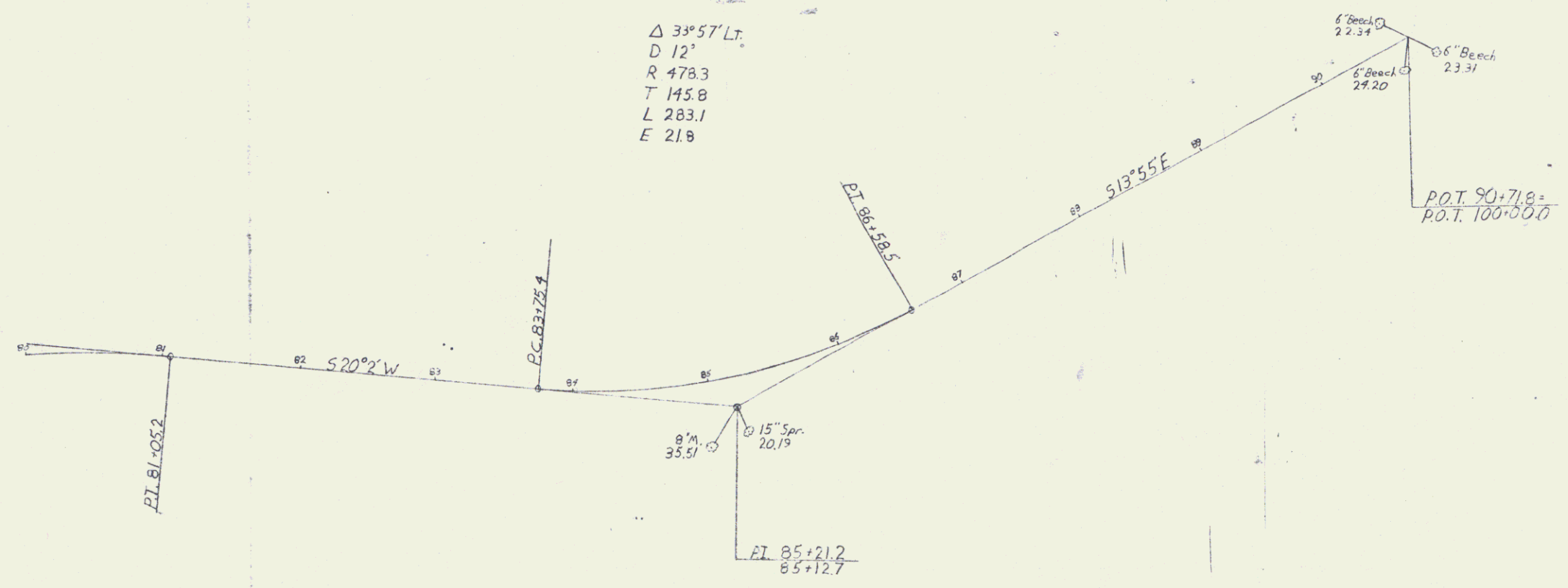
$\Delta$  19° 47' Rt.  
 D 8'  
 R 716.8  
 T 125.0  
 L 247.3  
 E 10.8

2.81 Acres  
 STA. 40+00-80+00-Right  
 MIDDLEBURY COLLEGE

ST. 187 (M)  
 HANCOCK Dist 5  
 Levels by Palmer 7-56  
 Plotted by Grant 8-56  
 Traced by Grant  
 SHEET 5



$\Delta 33^{\circ}57'LT$   
D 12'  
R 478.3  
T 145.8  
L 283.1  
E 21.8



HANCOCK Dist. 5  
Levels by Palmer 7-56  
Plotted by Grant 8-56  
Traced by Grant  
SHEET 6

6