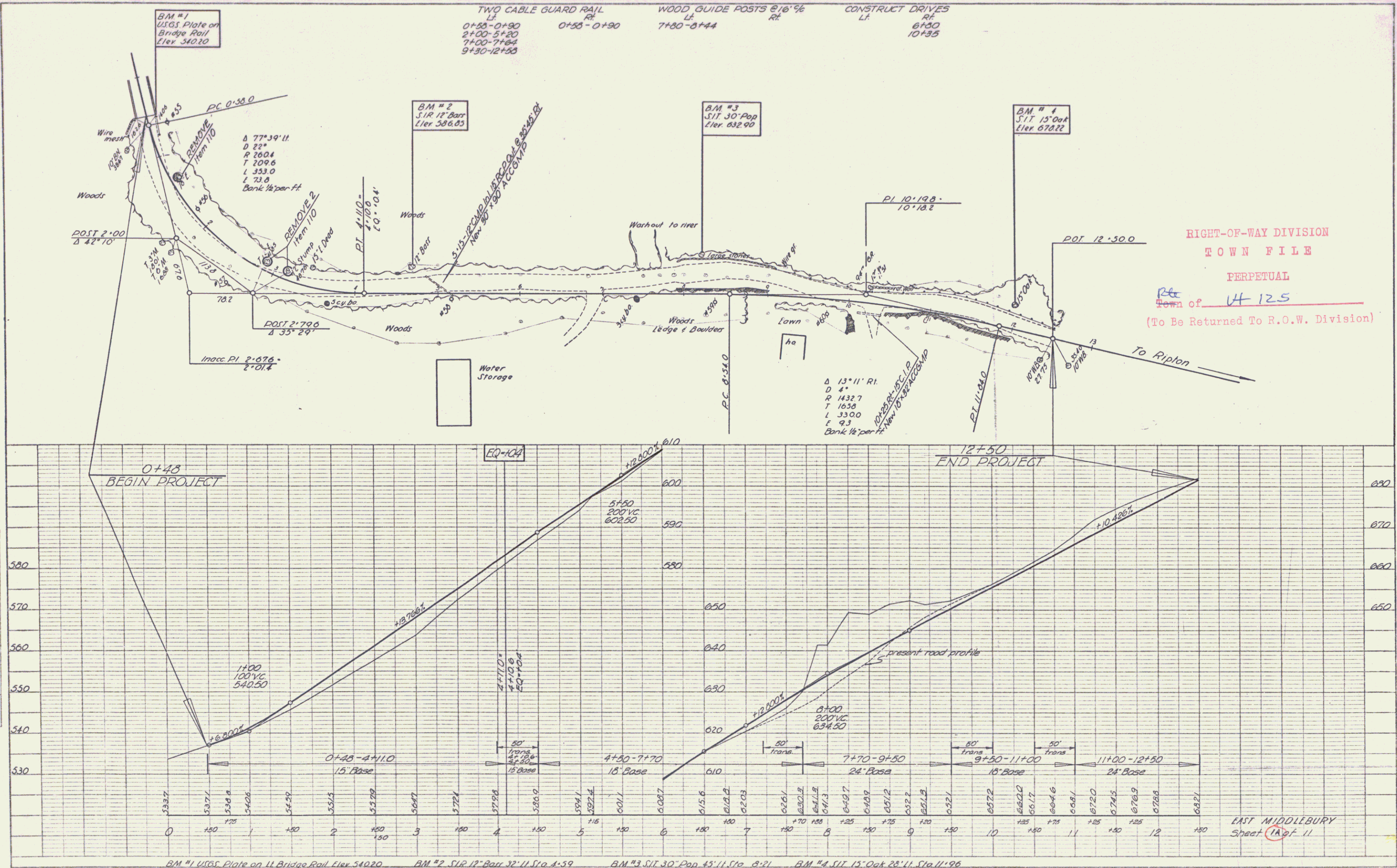


PLAN
 DATE: 7/28
 DRAWN BY: [Signature]
 CHECKED BY: [Signature]
 TITLE: [Blank]
 SHEET NO.: [Blank]

PROFILE
 DATE: [Blank]
 DRAWN BY: [Blank]
 CHECKED BY: [Blank]
 TITLE: [Blank]
 SHEET NO.: [Blank]



RIGHT-OF-WAY DIVISION
 TOWN FILE
 PERPETUAL
 Town of UH 125
 (To Be Returned To R.O.W. Division)

BM #1 USGS Plate on 11 Bridge Rail Elev. 340.20
 BM #2 S.I.P. 12" Bar 32' 11" Sta. 4-59
 BM #3 S.I.T. 30" Pop. 43' 11" Sta. 8-21
 BM #4 S.I.T. 15" Oak 28' 11" Sta. 11-96

PLATE 1 - PLAN-PROFILE
 HOFFEL & BERRY CO., NEW YORK
 MADE IN U.S.A.

EAST MIDDLEBURY
 Sheet 1A of 11