

INDEX OF SHEETS

STATE OF VERMONT DEPARTMENT OF HIGHWAYS



PROPOSED IMPROVEMENT

TOWN OF ORANGE

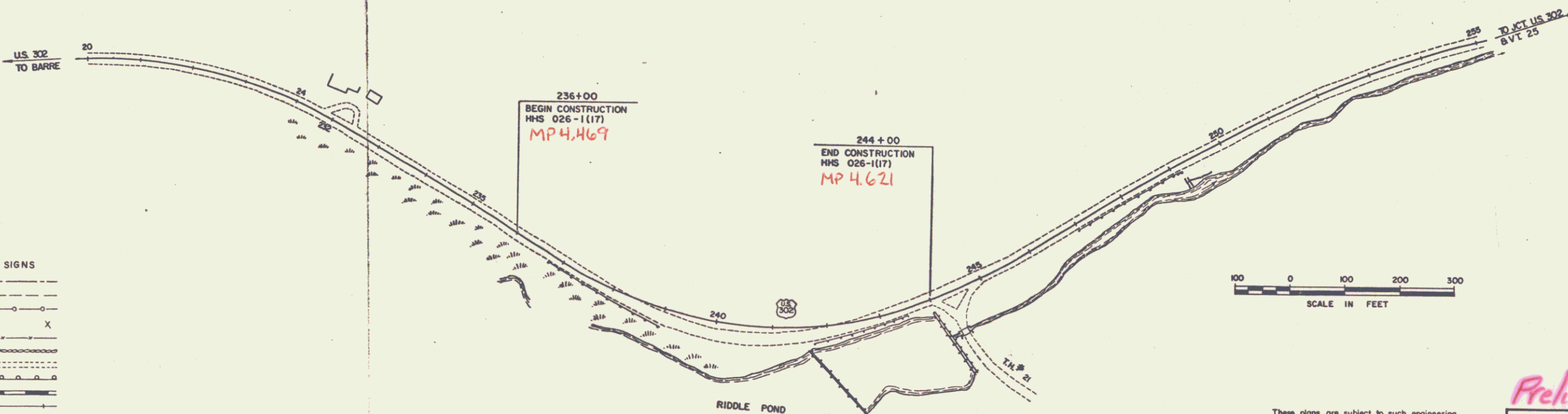
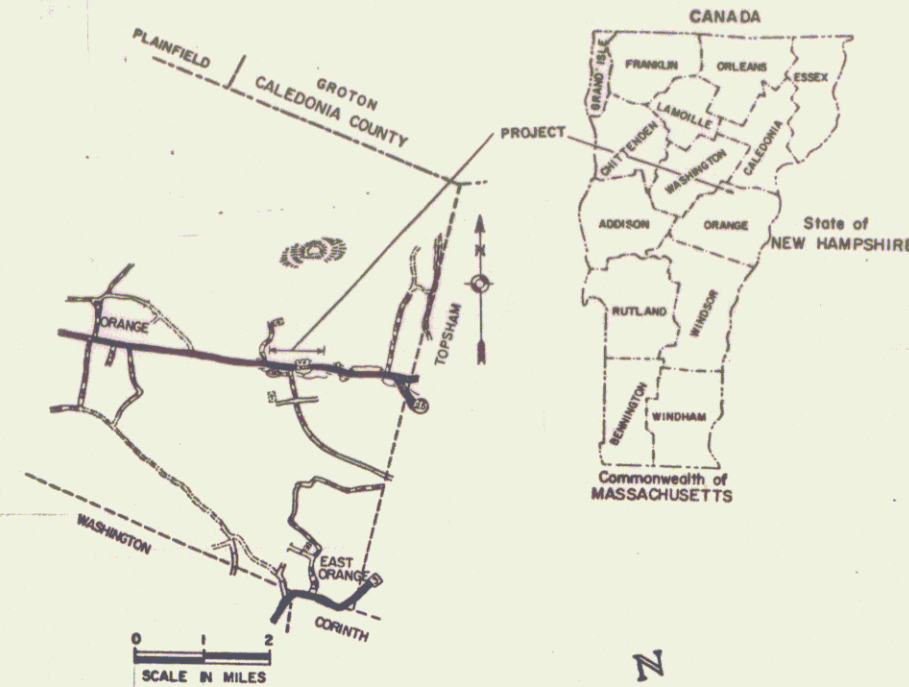
COUNTY OF ORANGE

WILLIAM SCOTT MEMORIAL HIGHWAY, U.S. ROUTE 302
BARRE - WELLS RIVER RD.

BEGINNING AT A POINT 1.803 MILES WESTERLY OF THE ORANGE -
TOPSHAM TOWN LINE AND EXTENDING EASTERLY 0.152 MILES.

LENGTH OF ROADWAY 800.00 FT. = 0.152 MILES
LENGTH OF ROADWAY 800.00 FT. = 0.152 MILES

1975 A D T - 1865
1975 D H V - 265
D - 55%
T - 6%
V - 50



- CONVENTIONAL SIGNS
- COUNTY LINE ————
 - TOWN LINE ————
 - LIMITS OF ACCESS ————
 - POINT OF ACCESS X
 - FENCE LINE ————
 - STONE WALL ————
 - TRAVELED WAY ————
 - GUARD RAIL ————
 - RAILROAD ————
 - SURVEY LINE ————
 - CULVERT ————
 - POWER POLE ————
 - TELEPHONE POLE ————
 - TREES ————
 - F.A. CONST IDENTIFICATION SIGNS ▲
 - PROPERTY LINE ————
 - R.O.W. TAKING LINE ————
 - SLOPE RIGHTS ————
 - TOP OF CUT ————
 - TOE OF SLOPE ————

These plans are subject to such engineering changes as may be required by the Federal Highway Administration or the Chief Engineer. Construction is to be carried on in accordance with these plans and the Standard Specifications for Highway and Bridge Construction dated January 3, 1972 as approved by the Federal Highway Administration on December 29, 1971 for use on this project, including all subsequent revisions and such revised specification and special provisions as are incorporated in these plans.

Plan # 99R571
Date 1/1/1971

Preliminary 6F675

SUBMITTED BY ORDER OF THE STATE HIGHWAY BOARD

APPROVED _____ DATE _____
CHIEF ENGINEER

DEPARTMENT OF TRANSPORTATION
FEDERAL HIGHWAY ADMINISTRATION

APPROVED _____ DATE _____
DIVISION ENGINEER

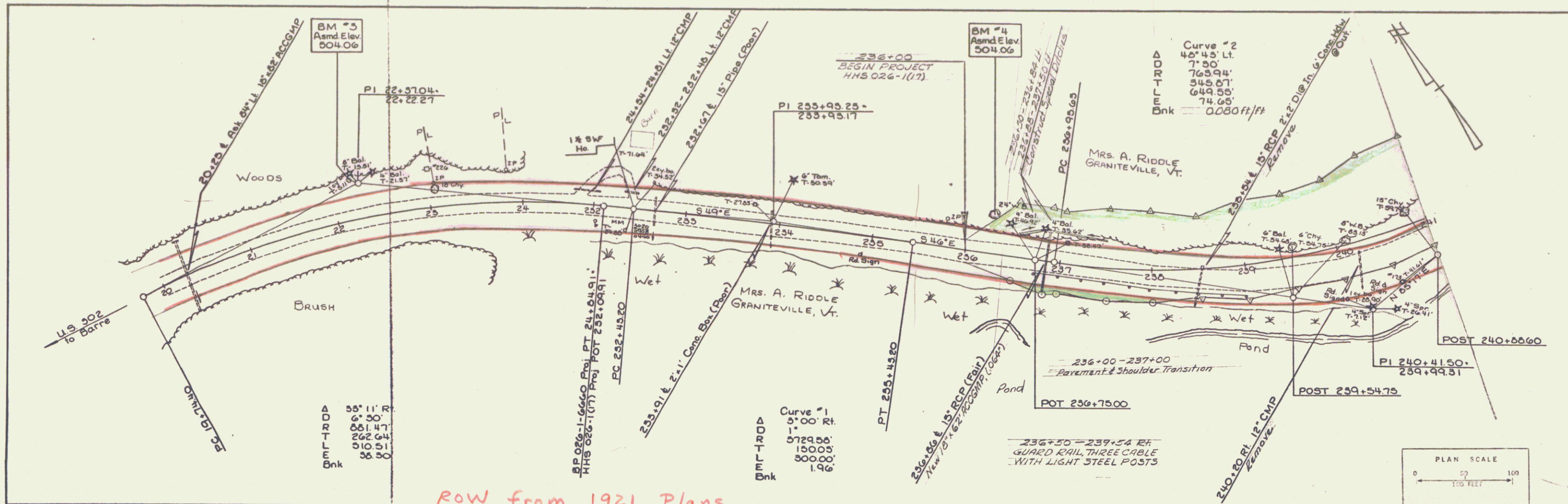
PROJECT HHS NX 026-1(17)

SHEET 1 OF SHEETS

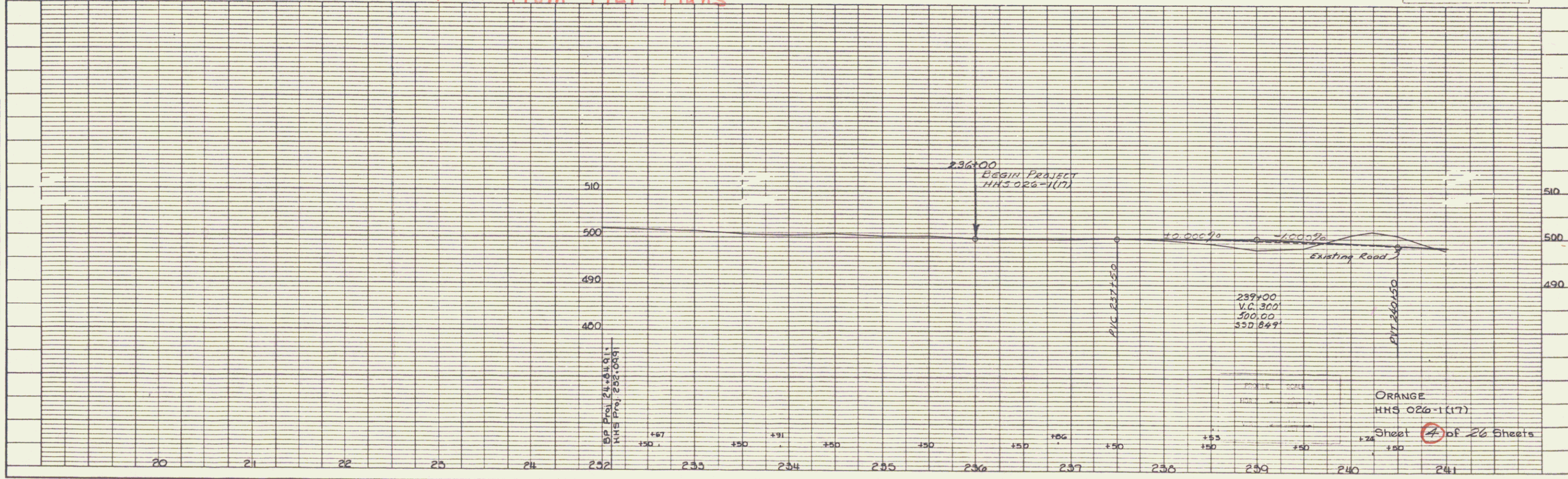
D-10 SRS 12/17/70

PLAN	SUBMITTED	BY	DATE
	APPROVED		
	CHECKED		
	BY		
	NO.		

PROFILE	SUBMITTED	BY	DATE
	APPROVED		
	CHECKED		
	BY		
	NO.		



ROW from 1921 Plans



K&E PLATE 1, PLAN-PROFILE
EDWARDS & KELCEY CO.

