



SHEET NO. 1, TITLE PAGE.  
 " " 2, TYPICAL CROSS-SECTION OF IMPROVEMENT  
 " " 2, QUANTITIES.

$\frac{1}{2}$ " Bituminous Concrete  
 Pavement, Hem 36LB (Mod)

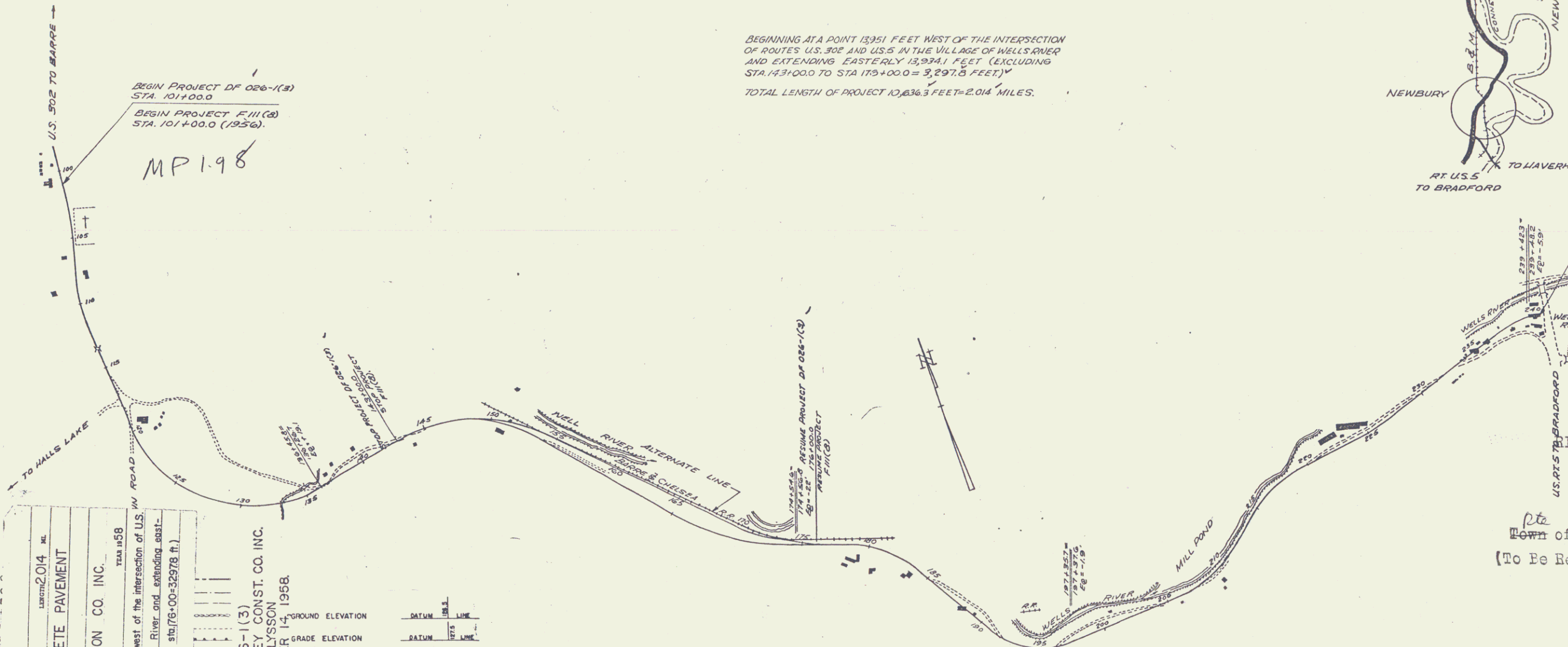
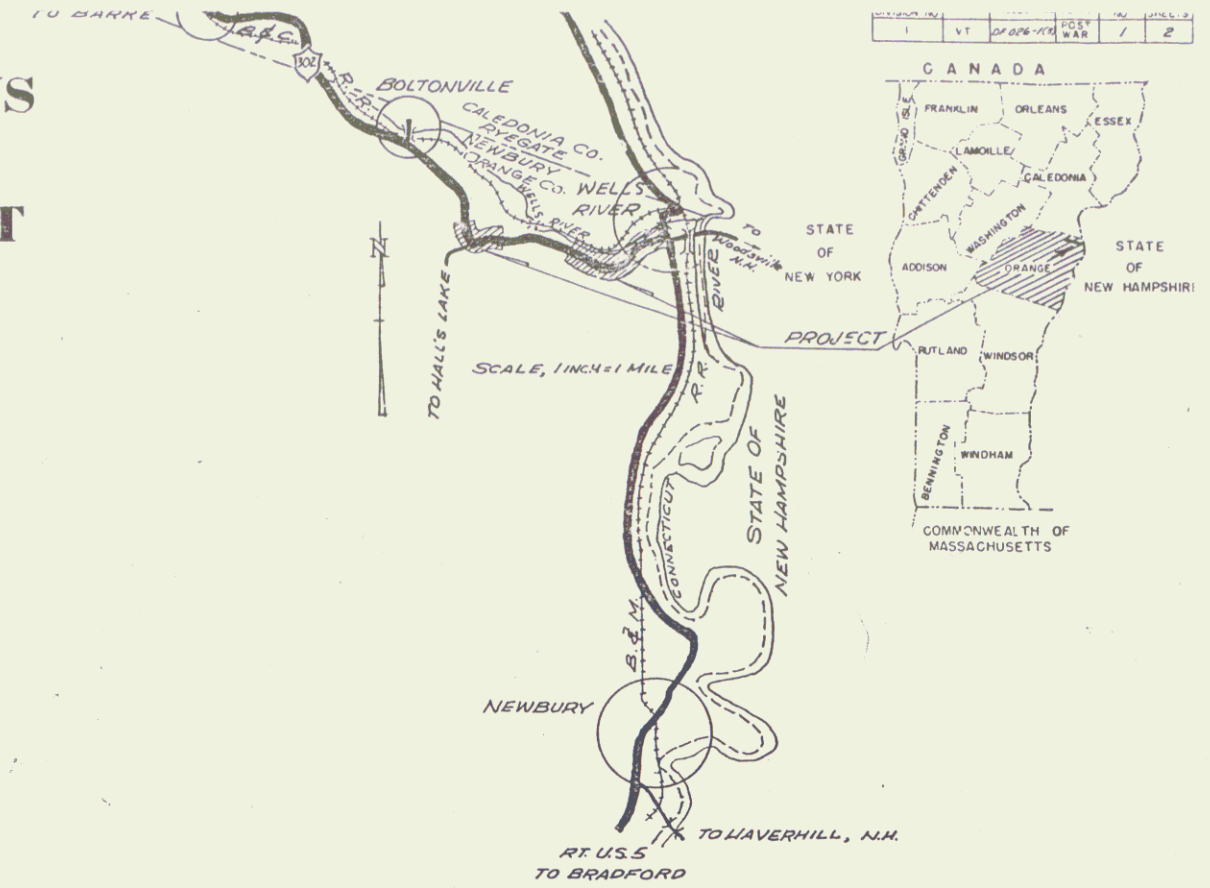
PROJECT NAME & NUMBER NEWBURY DF 026-1(3)	TYPE $\frac{1}{2}$ " BITUMINOUS CONCRETE PAVEMENT	SURFACE AREA 28,363 sy.
RECORD PLANS		
MATERIALS		
ASPHALT - SOCONY-E. PROVIDENCE, R. I.	TAR - OLD COLONY TAR CO.	
BITUMINOUS CONCRETE	WORCESTER, MASS.	
WELLS-LANSON QUARRY CO. BARRE, VT.	GRAVEL - RIVER	
CONTRACTOR - COOLEY CONST. CO. INC.	CONTRACT DATED - SEPT. 3, 1958.	
RES. ENG. - J. A. MCCREA	CONTRACT STARTED - SEPT. 23, 1958.	
INSPECTOR - C. H. FRICH	CONTRACT COMPLETED OCT. 14, 1958.	
RECORD PLANS - E. GLYSSON	CONTRACT ACCEPTED OCT. 14, 1958.	

STATE OF VERMONT  
 DEPARTMENT OF HIGHWAYS  
**PROPOSED IMPROVEMENT**

FEDERAL AID PROJECT

TOWN OF NEWBURY  
 COUNTY OF ORANGE  
 U.S. ROUTE 302  
 WELLS RIVER - SO. RYEGATE ROAD

BEGINNING AT A POINT 13,951 FEET WEST OF THE INTERSECTION  
 OF ROUTES U.S. 302 AND U.S. 5 IN THE VILLAGE OF WELLS RIVER  
 AND EXTENDING EASTERLY 13,934.1 FEET (EXCLUDING  
 STA. 143+00.0 TO STA. 175+00.0 = 3,297.5 FEET)  
 TOTAL LENGTH OF PROJECT 10,636.3 FEET = 2.014 MILES.



PROJECT NEWBURY  
 DF-026-1(3)  
 LENGTH 2.014 MI.  
 TYPE  $\frac{1}{2}$ " BITUMINOUS CONCRETE PAVEMENT  
 CONTRACTOR COOLEY CONSTRUCTION CO. INC.  
 BARRE, VT.  
 LOCATION Beginning at a point 13,951 ft. west of the intersection of U.S. ROUTE 302 and U.S. 5 in the Village of Wells River, and extending easterly 13,934.1 ft. (excluding Sta. 143+00.0 to Sta. 175+00.0 = 3,297.5 ft.)

NEWBURY DF 026-1(3)  
 CONTRACTOR - COOLEY CONST. CO. INC.  
 RECORD PLANS - E. GLYSSON  
 COMPLETED - OCTOBER 14, 1958.

GROUND ELEVATION	DATUM	LINE
GRADE ELEVATION	DATUM	LINE
CURVE DATA		
DEFLECTION OF ANGLE	.....	A
DEGREE OF CURVE	.....	D
RADIUS OF CURVE	.....	R
TANGENT DISTANCE	.....	T
LENGTH OF CURVE	.....	L
EXTERNAL DISTANCE	.....	E
POINT OF INTERSECTION	.....	P.I.
POINT OF CURVE	.....	P.C.
POINT OF TANGENT	.....	P.T.
POINT ON TANGENT	.....	P.O.T.
POINT ON SUB-TANGENT	.....	POST

SCALES

TITLE	1" = 400'
TYPICAL	3" = 8'
PLAN	1" = 100'
PROFILE HORIZONTAL	1" = 100'
VERTICAL	1" = 10'
CROSS-SECTIONS	1" = 10'

THESE PLANS ARE SUBJECT TO SUCH REVISIONS AS MAY BE  
 REQUIRED BY THE BUREAU OF PUBLIC ROADS OR THE COMMISSIONER  
 OF HIGHWAYS.  
 CONSTRUCTION IS TO BE CARRIED ON IN ACCORDANCE WITH  
 THE PLANS AND THE STANDARD SPECIFICATIONS FOR HIGHWAY AND BRIDGE  
 CONSTRUCTION OF JANUARY 1956 SUBMITTED TO THE BUREAU OF  
 PUBLIC ROADS AS APPROVED JULY 5, 1958, INCLUDING ALL SUBSEQUENT  
 APPROVED REVISIONS AND SUCH REVISED SPECIFICATIONS AND SPECIAL  
 PROVISIONS AS ARE SUBMITTED WITH THE PLANS.

END PROJECT DF 026-1(3)  
 STA. 240+25.0  
 END PROJECT FIN(3)  
 STA. 240+25.0 (2956)  
 RT. U.S. 5 TO ST. JOHNSBURY  
 MP 4.917  
 RIGHT-OF-WAY DIVISION  
 TOWN FILE  
 PERPETUAL  
 Town of US 302  
 (To Be Returned To R.O.W. Division)

NOTE: ANY FURTHER INFORMATION CONCERNING  
 FINAL QUANTITIES, AMOUNTS OR OTHER DETAILS  
 RELATIVE TO THIS PROJECT MAY BE FOUND IN  
 EITHER THE FIELD BOOKS OR THE ESTIMATE  
 FILE.

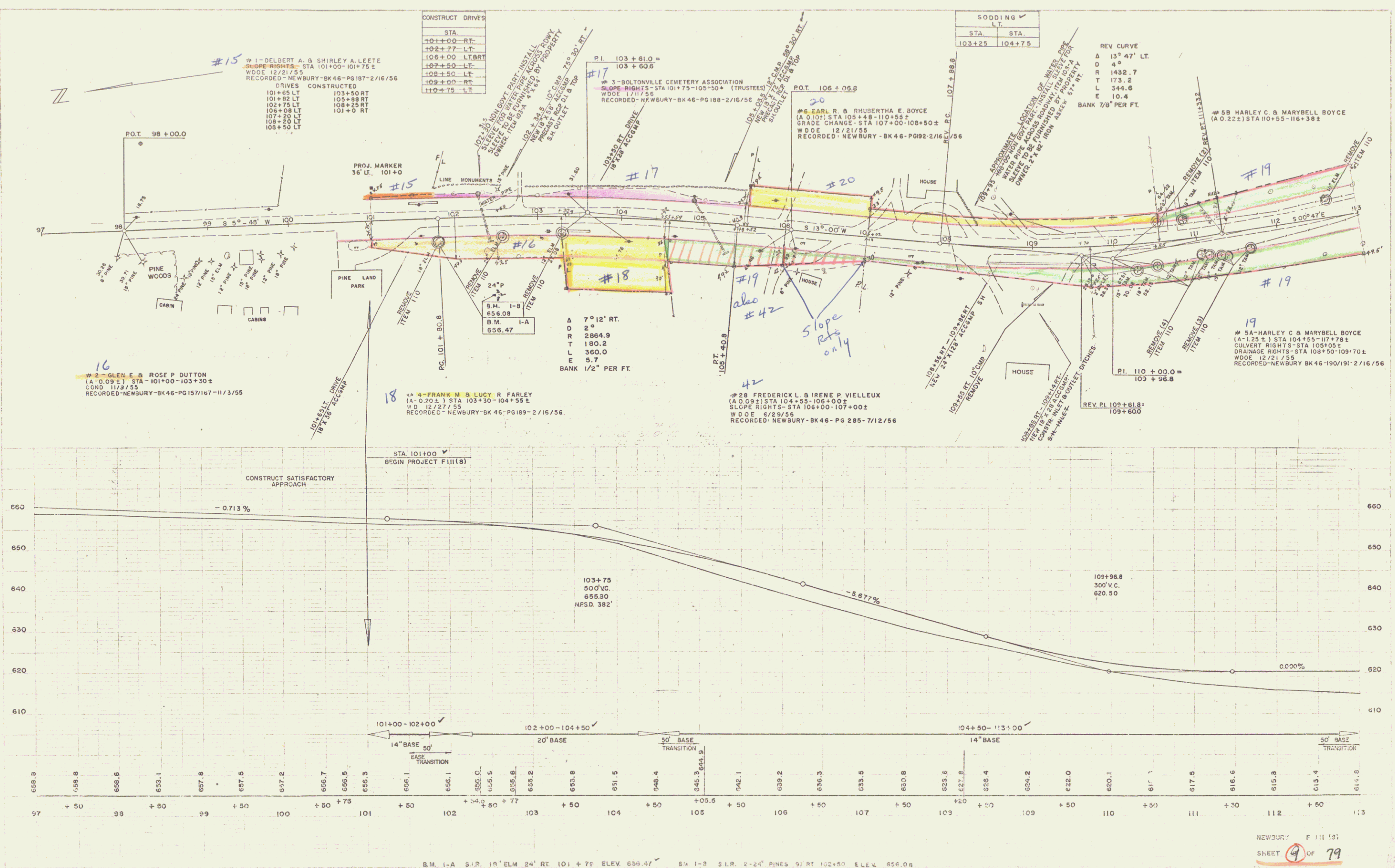
DEPARTMENT OF COMMERCE  
 BUREAU OF PUBLIC ROADS  
 APPROVED  
 DISTRICT ENGINEER  
 DATE

APPROVED DATE	APPROVED DATE	APPROVED DATE	APPROVED DATE	APPROVED DATE	APPROVED DATE
SECONDARY ENGINEER	CONSTRUCTION ENGINEER	BRIDGE ENGINEER	DISTRICT ENGINEER	HIGHWAY ENGINEER	DISTRICT ENGINEER
	May 26, 1958			May 26, 1958	May 26, 1958

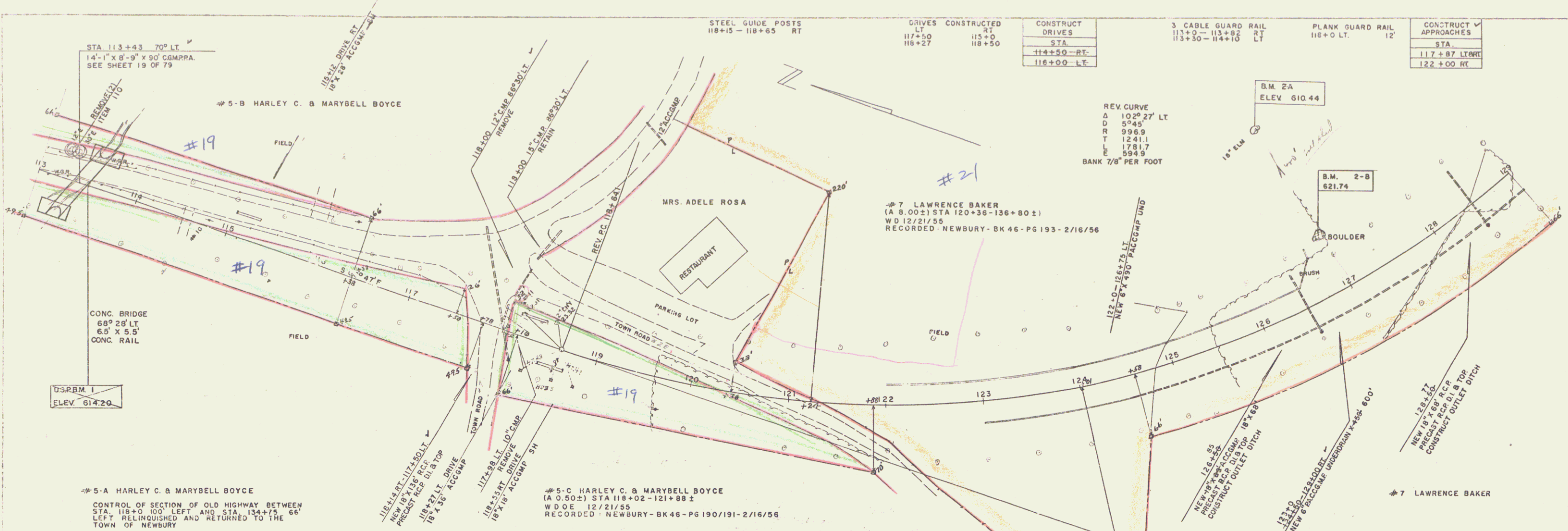
PROJECT DF NO. 026-1(3)  
 SHEET 1A OF 2 SHEETS

SPALDING & DEVALIC  
WESTER-MARTIN INC. 12-34

SPALDING & DEVALIC  
WESTER-MARTIN INC. 12-34





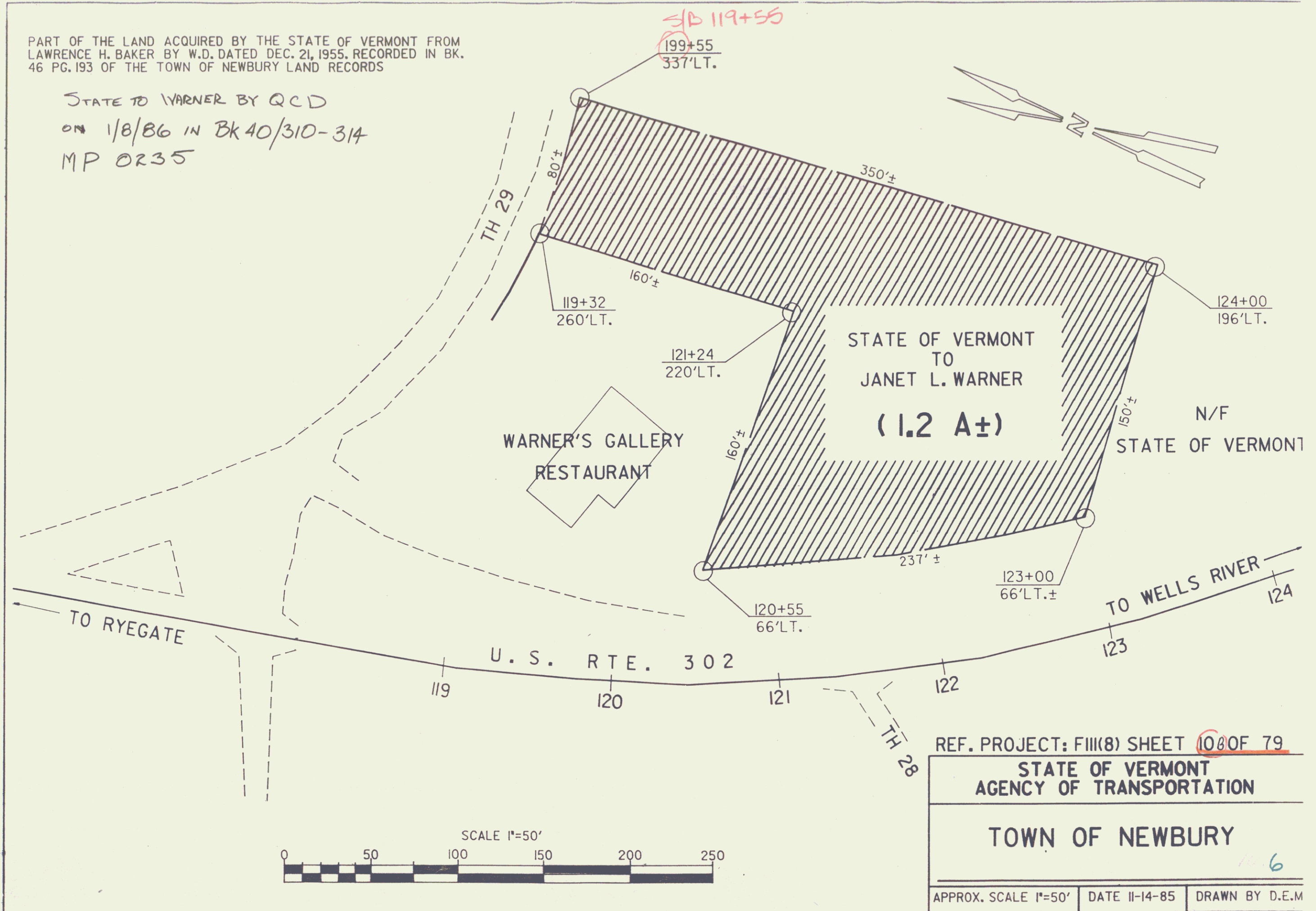


B.M. 2-B SPOT ON BOULDER 60' LT 127+0  
SHEET 79  
NEWBURY F 111(8)

1011 5

PART OF THE LAND ACQUIRED BY THE STATE OF VERMONT FROM  
LAWRENCE H. BAKER BY W.D. DATED DEC. 21, 1955. RECORDED IN BK.  
46 PG. 193 OF THE TOWN OF NEWBURY LAND RECORDS

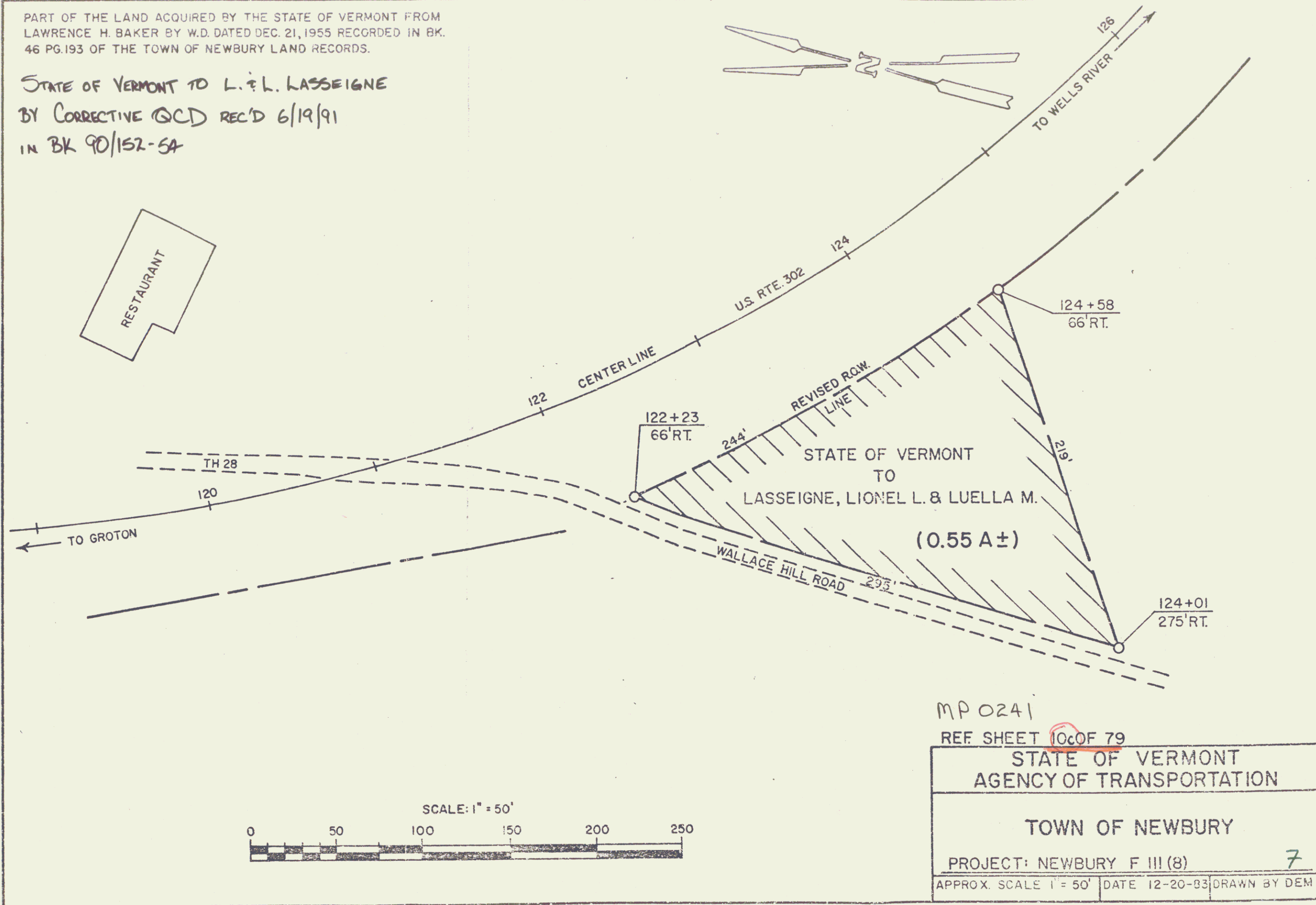
STATE TO WARNER BY QCD  
ON 1/8/86 IN BK 40/310-314  
MP 0235



REF. PROJECT: F111(8) SHEET 100 OF 79  
STATE OF VERMONT  
AGENCY OF TRANSPORTATION  
TOWN OF NEWBURY  
APPROX. SCALE 1"=50' | DATE 11-14-85 | DRAWN BY D.E.M.

PART OF THE LAND ACQUIRED BY THE STATE OF VERMONT FROM  
LAWRENCE H. BAKER BY W.D. DATED DEC. 21, 1955 RECORDED IN BK.  
46 PG. 193 OF THE TOWN OF NEWBURY LAND RECORDS.

STATE OF VERMONT TO L. & L. LASSEIGNE  
BY CORRECTIVE GCD REC'D 6/19/91  
IN BK 90/152-5A



MP 0241

REF. SHEET 10 OF 79

STATE OF VERMONT  
AGENCY OF TRANSPORTATION

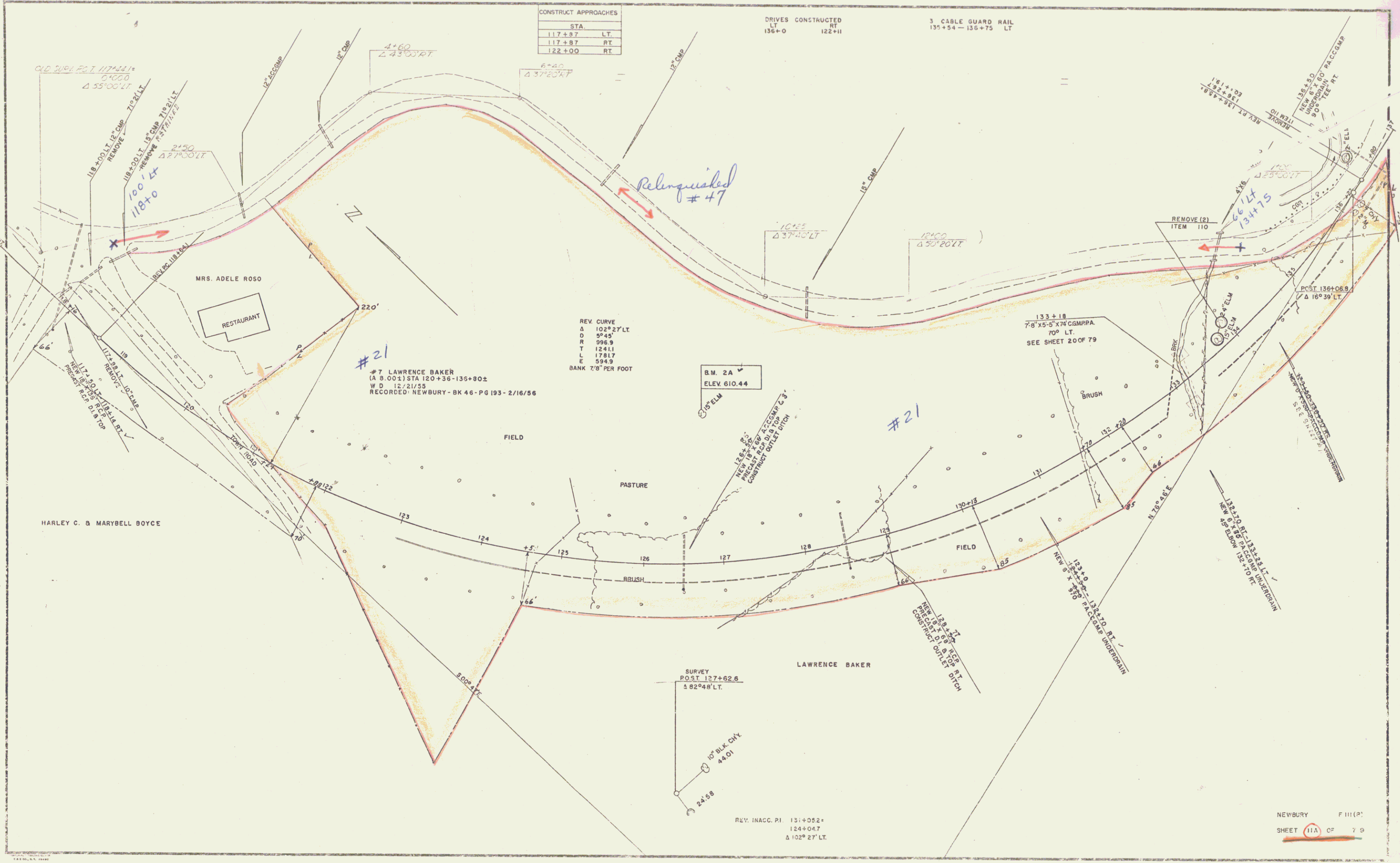
TOWN OF NEWBURY

PROJECT: NEWBURY F III (8)

7

APPROX. SCALE 1" = 50' DATE 12-20-83 DRAWN BY DEM





CONSTRUCT APPROACHES	
STA.	LT.
117+87	LT.
117+87	RT.
122+00	RT.

DRIVES CONSTRUCTED	
LT.	RT.
136+0	122+11

3 CABLE GUARD RAIL  
135+54 - 136+75 LT

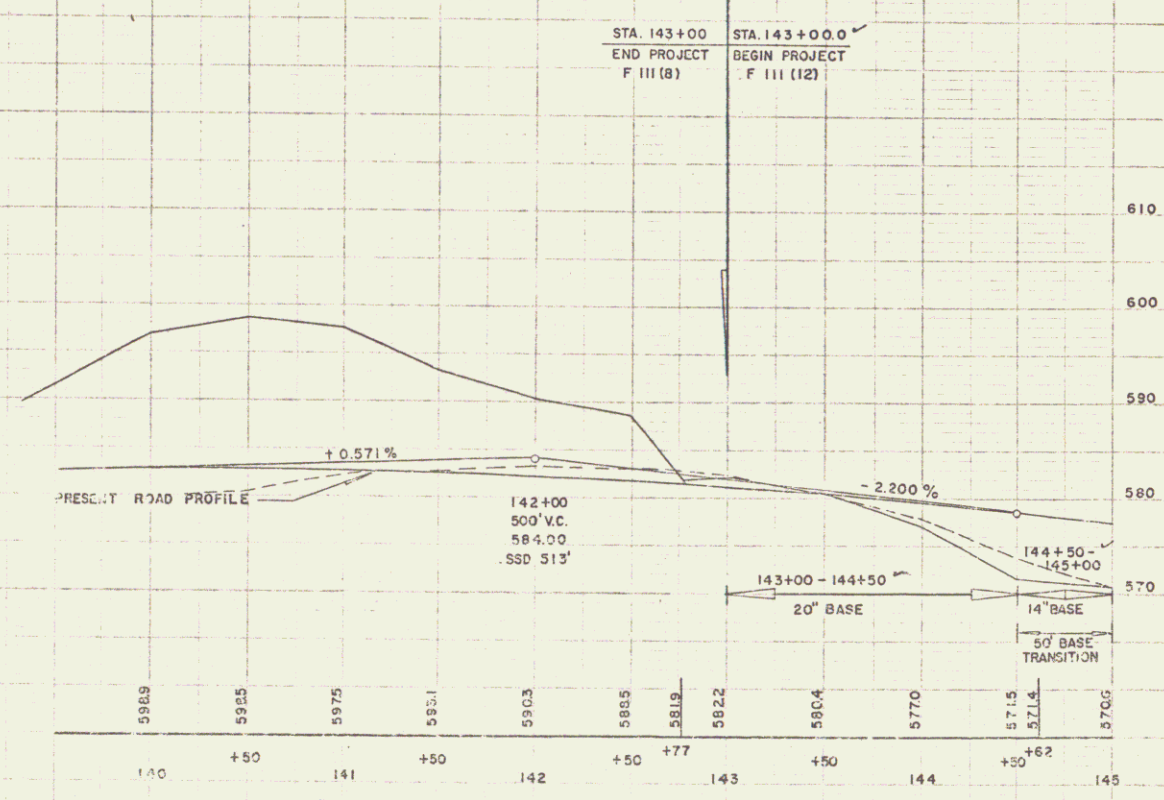
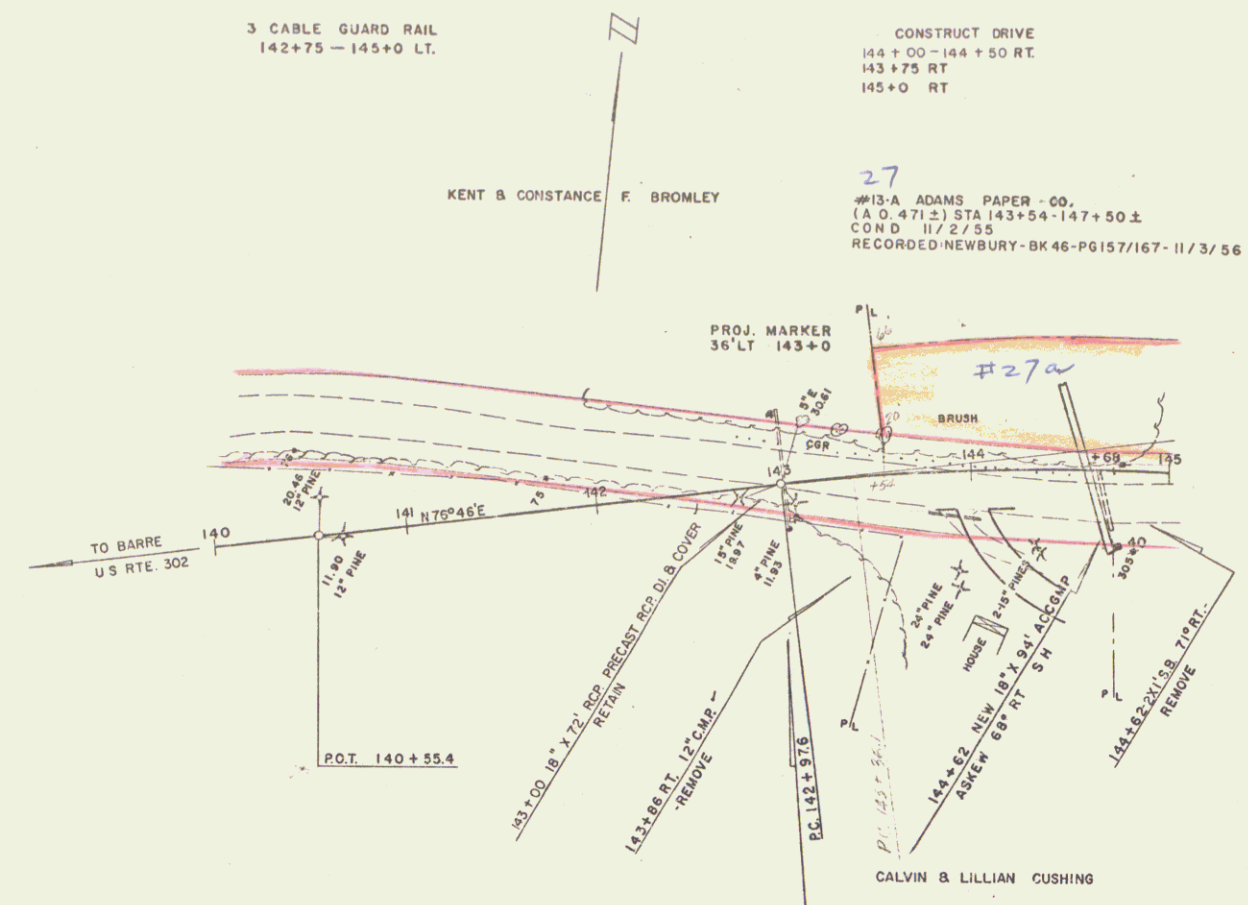
REV CURVE  
Δ 102°27' LT  
D 9°45'  
R 996.9  
T 124.11  
L 178.17  
E 594.9  
BANK 7/8" PER FOOT

B.M. 2A  
ELEV. 610.44

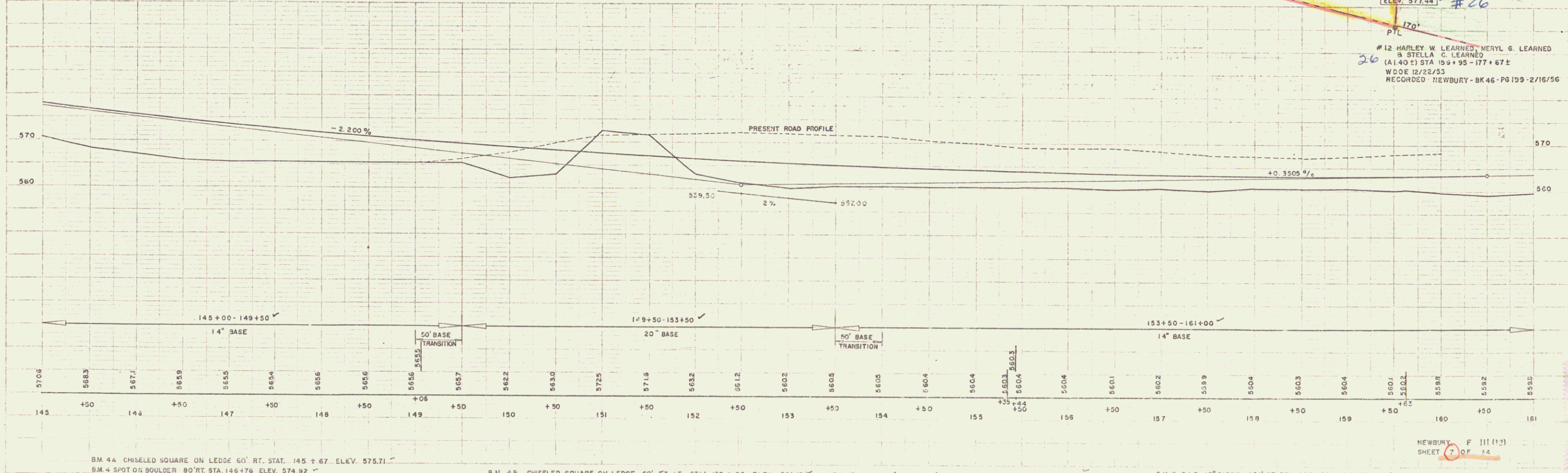
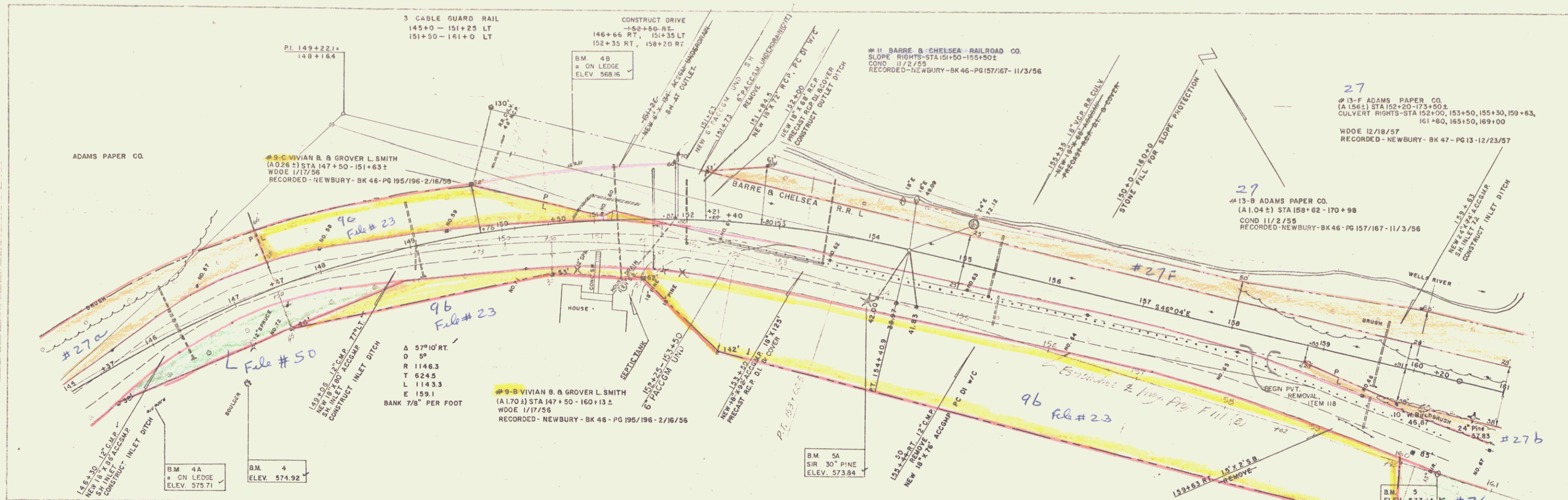
#7 LAWRENCE BAKER  
(A 8.00±) STA 120+36-135+80±  
W.D. 12/21/55  
RECORDED NEWBURY - BK 46 - PG 193 - 2/16/56

PLAN  
 SHEET NO. 12-55  
 DATE 11/2/55  
 WESTER-MARTIN, INC.  
 ENGINEERS  
 1014  
 15-55

SHEET NO. 12-55  
 DATE 11/2/55  
 WESTER-MARTIN, INC.  
 ENGINEERS  
 1014  
 15-55



NEWBURY F III (12)  
 SHEET 6 OF 3



12-25  
12-25  
SPALDING  
WEBSTER-MARTIN, INC.

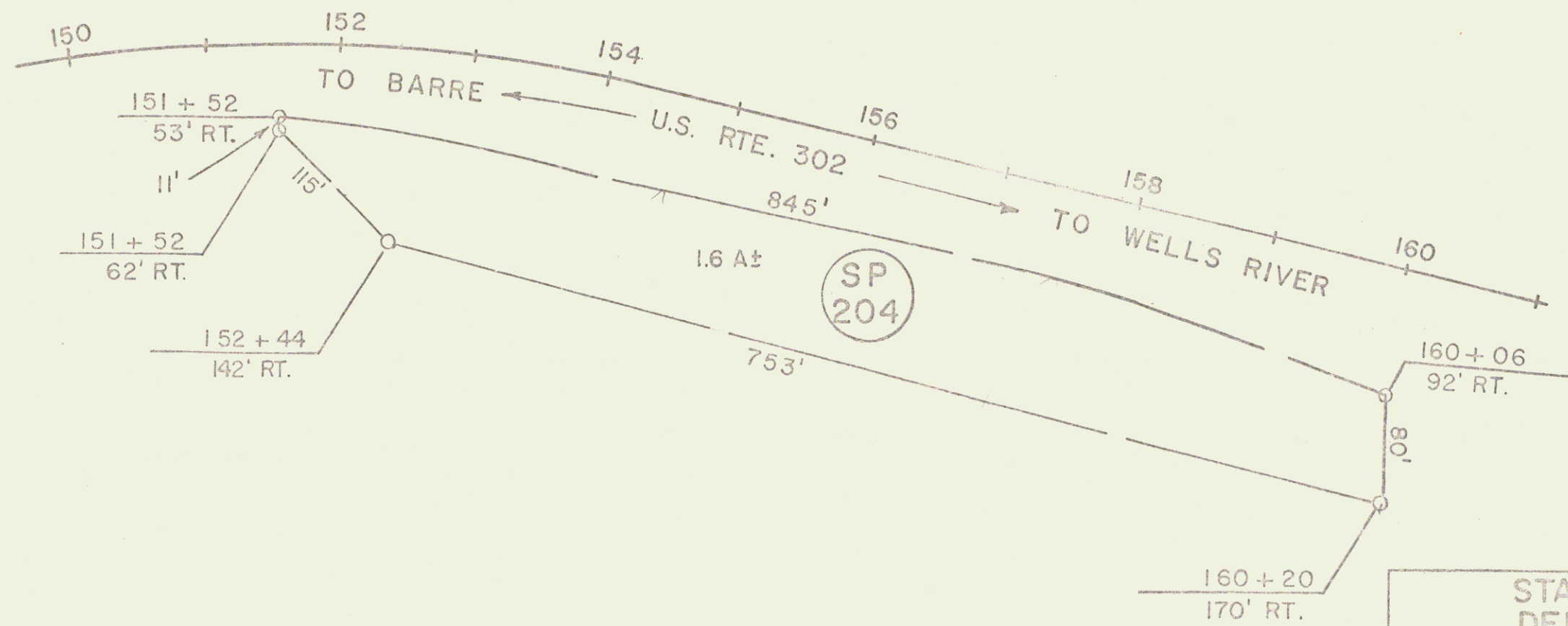
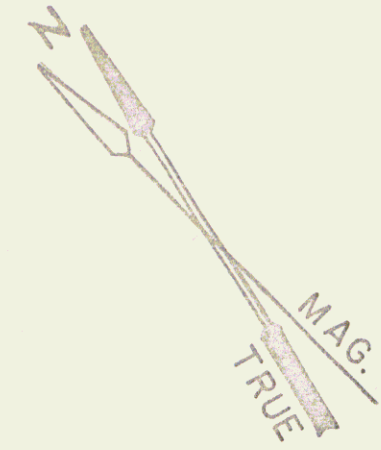
12-25  
12-25  
SPALDING  
WEBSTER-MARTIN, INC.

BM 4A CHISELED SQUARE ON LEDGE 60' RT. STAT. 145+67 ELEV. 575.71  
 BM 4 SPOT ON BOULDER 80' RT. STA. 146+76 ELEV. 574.92  
 BM 4B CHISELED SQUARE ON LEDGE 60' FT. LT. STA. 150+82 ELEV. 568.16  
 BM 5A S.R. 30" PINE 65' RT. STA. 154+08 ELEV. 573.84  
 BM 5 S.R. 15" BIRCH 101' RT. STA. 160+50 ELEV. 577.44

NEWBURY F 111 (12)  
 SHEET 7 OF 14

FORMERLY PART OF PARCEL 9B (FIII(8))  
 ACQUIRED FROM VIVIAN B. & GROVER L. SMITH  
 RECORDED: WDOE, TOWN OF NEWBURY, 2/16/56,  
 BK. 46, PG. 195 - 196

STATE OF VERMONT TO KAISER  
 BY QCD ON 9/18/74 IN  
 BK 55/530  
 MP 0295



SCALE IN FEET



SHEET 7A

STATE OF VERMONT  
 DEPT. OF HIGHWAYS

TOWN OF NEWBURY

PROJECT NEWBURY FIII (12) 12

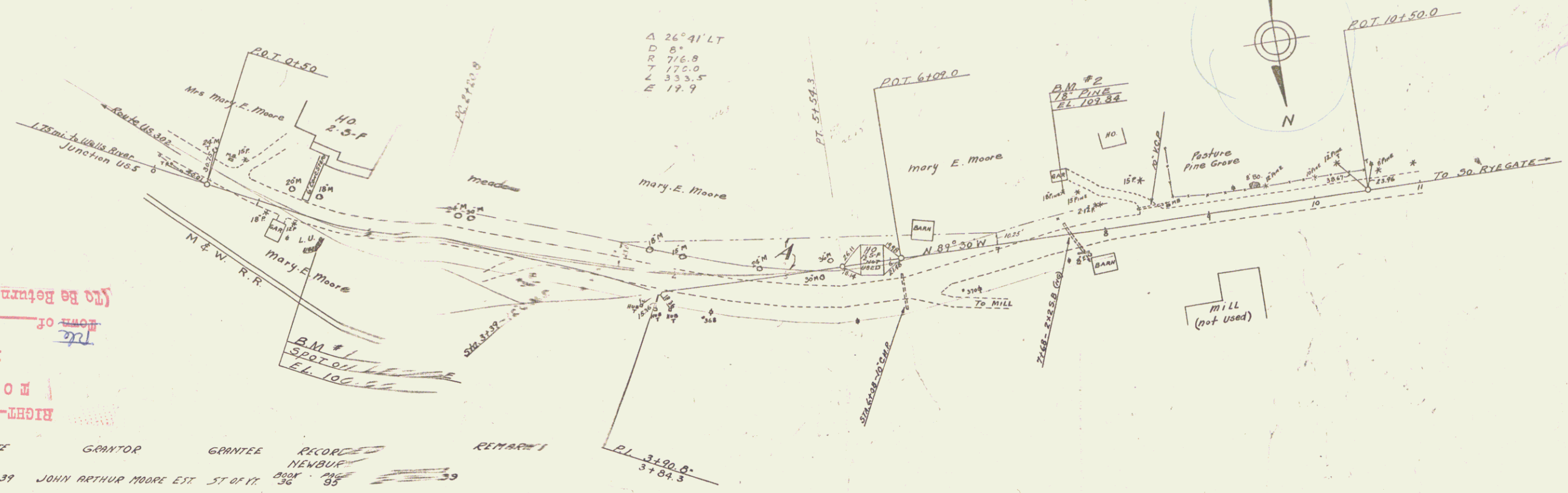
APPROX. SCALE 1"=100' DATE 8-22-74 DRAWN BY KDP

ALC 4

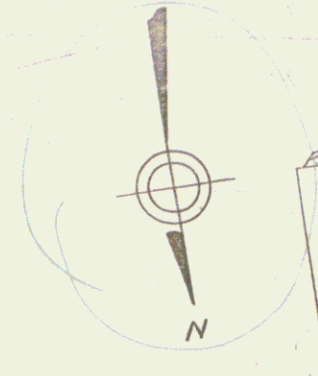
TRACED  
G. M. LAKE  
H. R. CALLAWAY SURVEYOR  
H. R. CALLAWAY SURVEYOR

RIGHT-OF-WAY DIVISION  
M.P. 3.17  
EIGHTH-OF-WAY DIVISION  
EIGHTH-OF-WAY DIVISION  
PERPETUAL  
US 302  
(To Be Returned to R.O.W. Division)

PARCEL INSTRUMENT DATE GRANTOR GRANTEE RECORD NUMBER REMARKS  
A EXEC. D. 1-23-37 JOHN ARTHUR MOORE EXT. ST. OF R.R. NEWBURGH 36 35 39

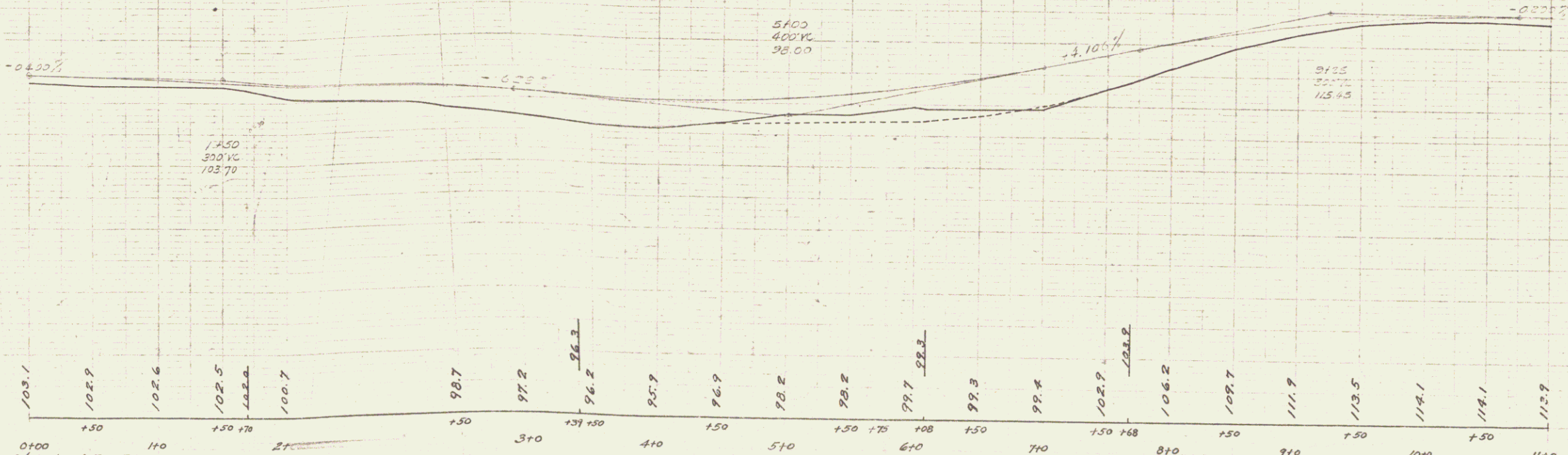


Δ 26° 41' LT  
D 8'  
R 776.8  
T 175.0  
E 333.5  
E 17.9



TRACED  
G. M. LAKE  
H. R. CALLAWAY SURVEYOR  
H. R. CALLAWAY SURVEYOR

NO.	DATE	DESCRIPTION	BY
1	1-23-37	Exec. D. 1-23-37	J.A.M.
2			
3			
4			
5			
6			
7			
8			
9			
10			



M #1 Spot on boulder 33' at Sta. 1465 ELEV. 100.0  
#2 S.I.R. 18 Pine 40' Lt. Sta. 1467 ELEV. 109.84

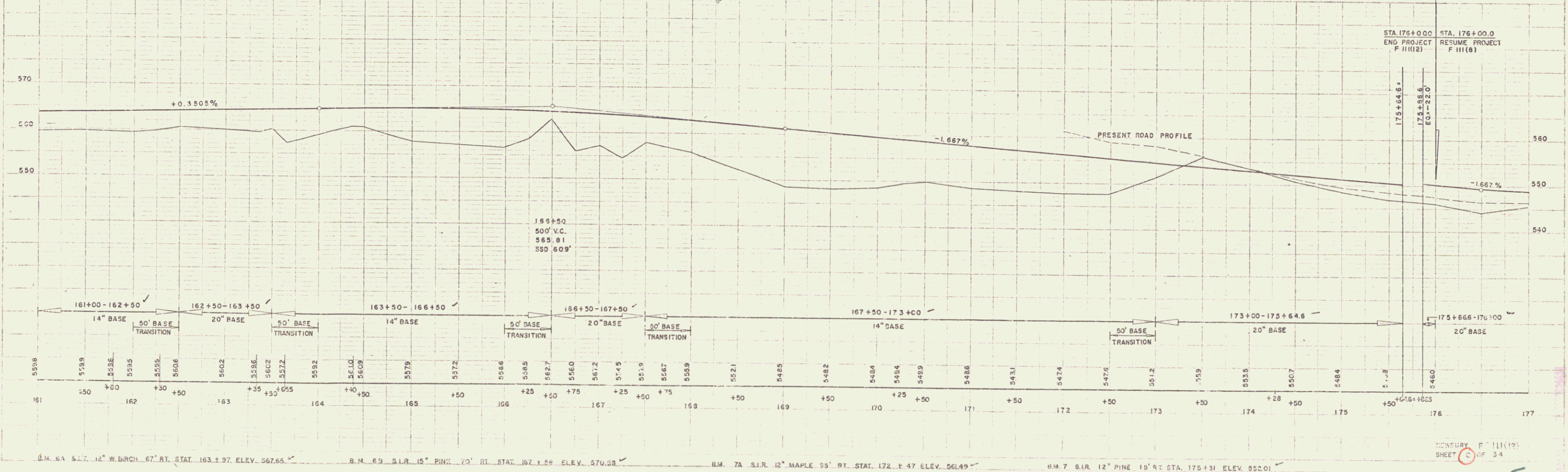
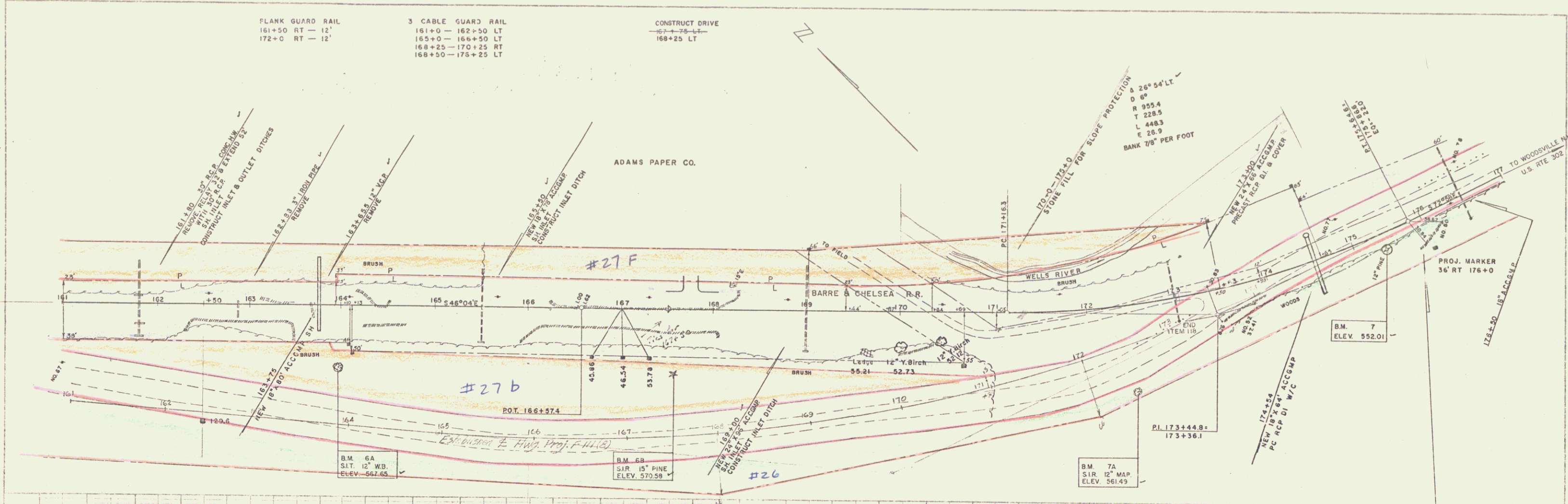
70 OF 34  
NEWBURGH  
SERIES-37A  
SHEET-1

DIST. # 2 PLANS 13



12-55  
 5-24  
 SPENCER  
 WENSTER-MARTIN, INC.

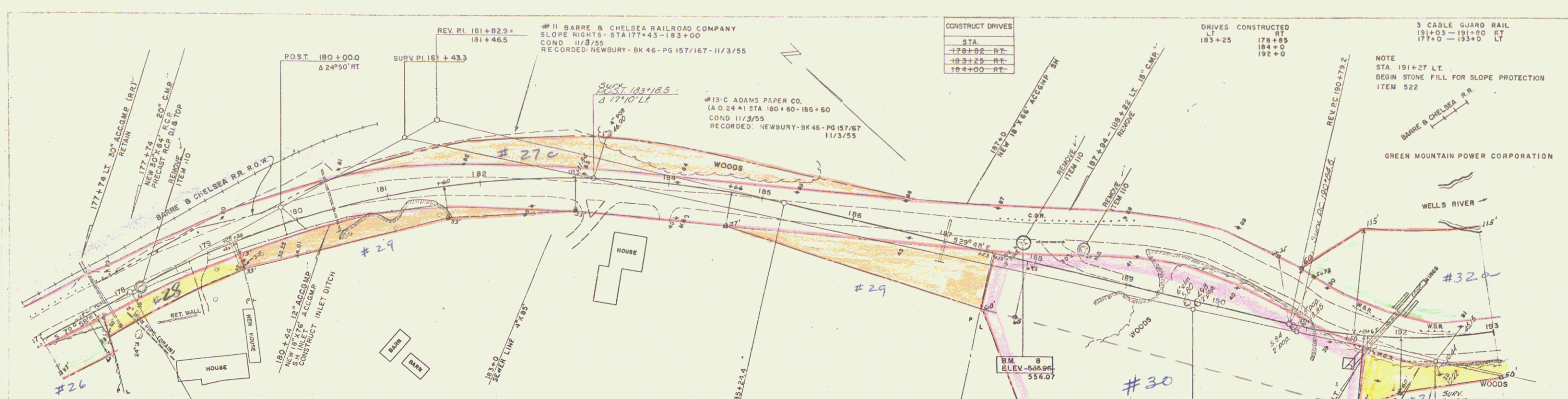
12-55  
 5-53  
 SPENCER  
 WENSTER-MARTIN, INC.



B.M. 64 S.L.T. 12" W.B. BRCH. 67' RT. STAT. 163+97 ELEV. 567.65  
 B.M. 69 S.L.R. 15" PINK 70' RT. STAT. 167+59 ELEV. 570.58  
 B.M. 7A S.L.R. 12" MAPLE 55' RT. STAT. 172+47 ELEV. 561.49  
 B.M. 7 S.L.R. 12" PINE 15' RT. STA. 175+31 ELEV. 552.01

HOWERY F 11(19)  
 SHEET C OF 34

15



**CONSTRUCT DRIVES**

STA.	
178+92 RT.	
183+25 RT.	
184+00 RT.	

**DRIVES CONSTRUCTED**

LT.	RT.
183+25	178+85
	184+00
	192+00

**3 CABLE GUARD RAIL**  
191+03 - 191+80 RT  
177+00 - 193+00 LT

**NOTE**  
STA. 191+27 LT.  
BEGIN STONE FILL FOR SLOPE PROTECTION  
ITEM 522

**REV. CURVE**

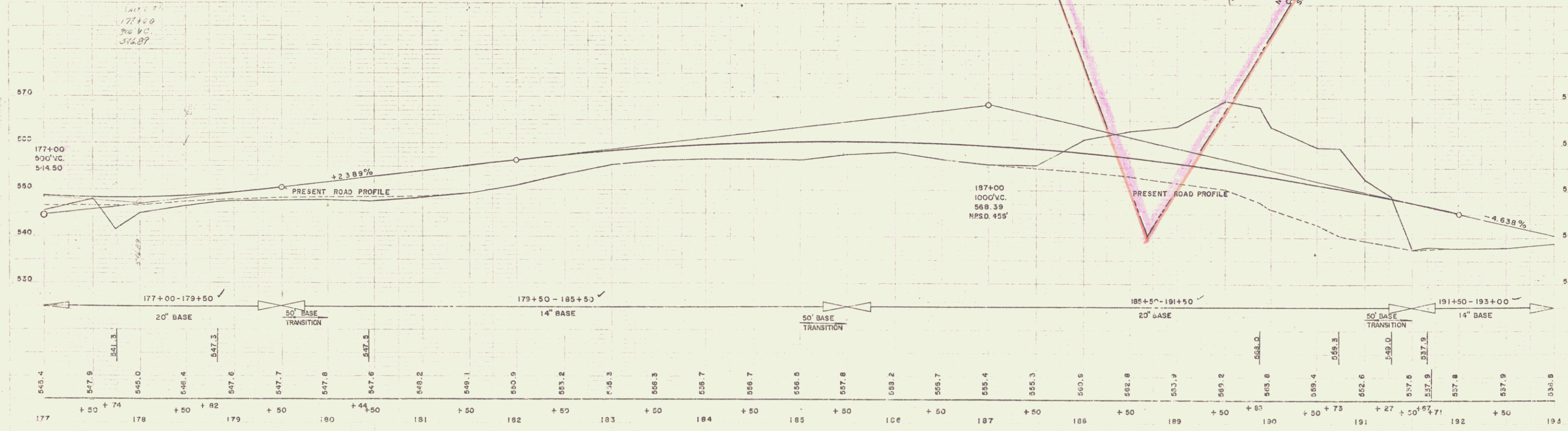
A	43°10' RT
D	6°
R	955.4
T	377.9
L	719.4
E	72.0
BANK	7/8" PER FT.

**REV. CURVE**

A	43°10' RT
D	6°
R	955.4
T	377.9
L	719.4
E	72.0
BANK	7/8" PER FT.

**REV. CURVE**

A	43°10' RT
D	6°
R	955.4
T	377.9
L	719.4
E	72.0
BANK	7/8" PER FT.



**NEWBURY F 111 (C)**  
SHEET 14 OF 79

B.M. # S.I.R. 24" PINE 23' LT. 167+80 ELEV. 556.07





DRIVES CONSTRUCTED  
235+0 - 229+50 RT  
234+75 - 236+0

CONSTRUCT DRIVES

STA	POS
229+00	LT
233+50	RT
235+09	RT
235+35	LT
239+09	RT
240+10	RT

GRANITE SLOPE EDGING  
ITEM 855-A

STA	POS
238+60	RT
240+07	LT
239+17	RT
239+69	RT
239+77	RT
238+25	LT
239+71	RT

TOPSOIL & SEEDING  
ITEMS 818, 621

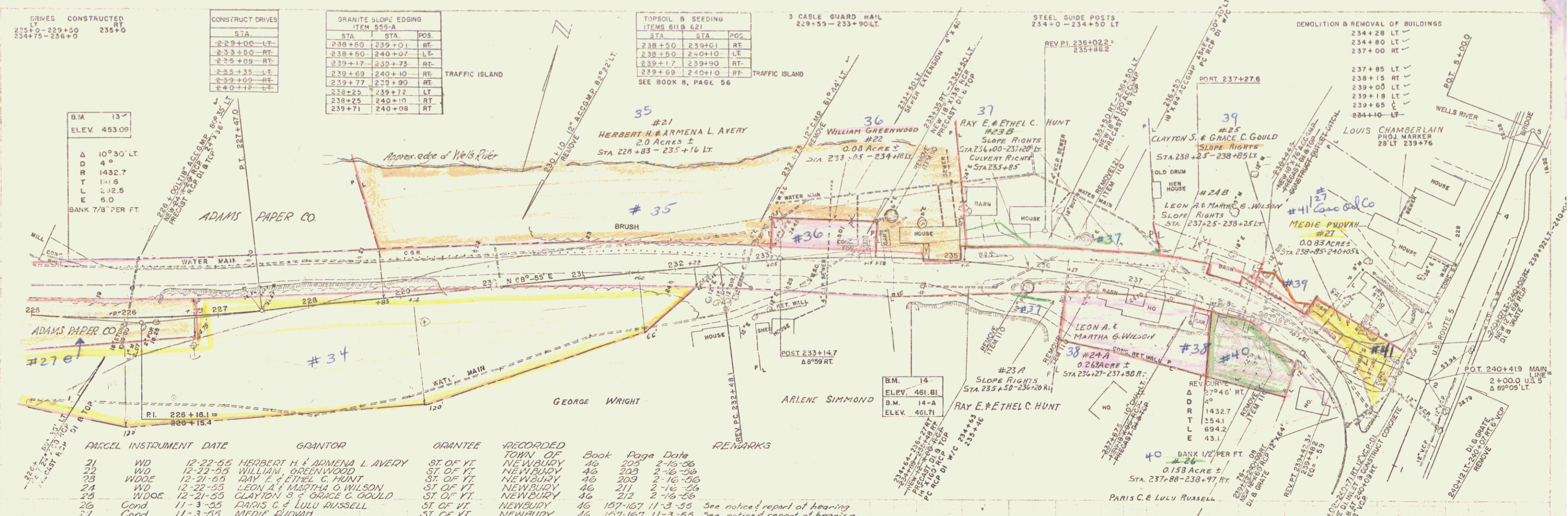
STA	POS
238+50	RT
239+50	LT
239+17	RT
239+69	RT
239+77	RT
238+25	LT
239+71	RT

3 CABLE GUARD RAIL  
229+55 - 233+90 LT

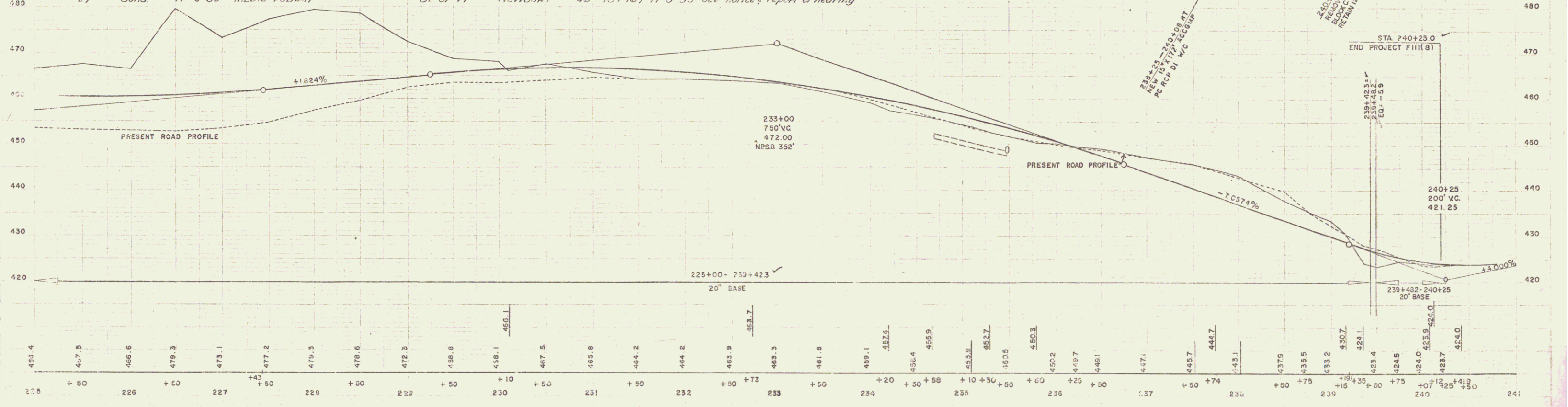
STEEL GUIDE POSTS  
234+0 - 234+50 LT

DEMOLITION & REMOVAL OF BUILDINGS

B.M. 13  
ELEV. 453.09  
Δ 10°30' LT  
D 4°  
R 1432.7  
T 111.6  
L 32.5  
E 6.0  
BANK 7/8" PER FT.



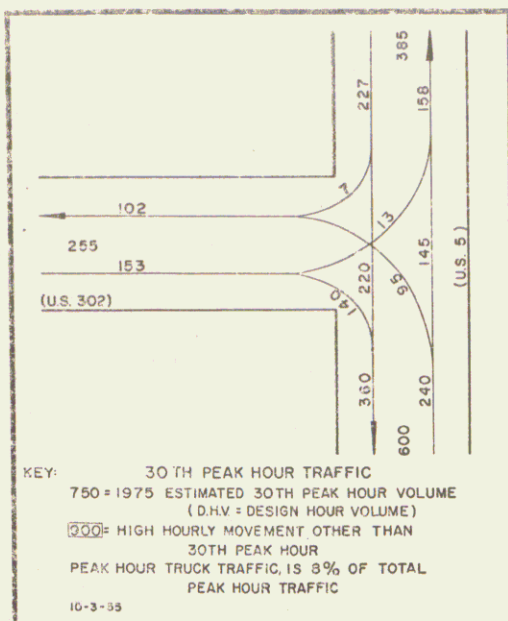
PARCEL	INSTRUMENT	DATE	GRANTOR	GRANTEE	RECORDED	TOWN OF	BOOK	PAGE	DATE	REMARKS
21	WD	12-22-55	HERBERT H. & ARMENA L. AVERY	ST. OF VT.	NEWBURY	46	205	2-16-56		
23	WDOE	12-21-55	WILLIAM GREENWOOD	ST. OF VT.	NEWBURY	46	209	2-16-56		
24	WD	12-22-55	LEON A. & MARTHA G. WILSON	ST. OF VT.	NEWBURY	46	211	2-16-56		
25	WDOE	12-21-55	CLAYTON S. & GRACE C. GOULD	ST. OF VT.	NEWBURY	46	212	2-16-56		
26	Cond	11-3-55	PARIS C. & LULU RUSSELL	ST. OF VT.	NEWBURY	46	167-167	11-3-55	See notice of report of hearing	
27	Cond	11-3-55	MEDIE FUDWAN	ST. OF VT.	NEWBURY	46	167-167	11-3-55	See notice of report of hearing	



B.M. 13 SPOT ON CONCRETE WALL 62' LT. 225+36 ELEV. 453.09

B.M. 14-A SPOT ON LEDGE 48' RT. 234+48 ELEV. 461.71  
B.M. 14 SPOT ON LEWIS 48' RT. 234+48 ELEV. 461.91

NEWBURY F 111 (6)  
SHEET 17 OF 79

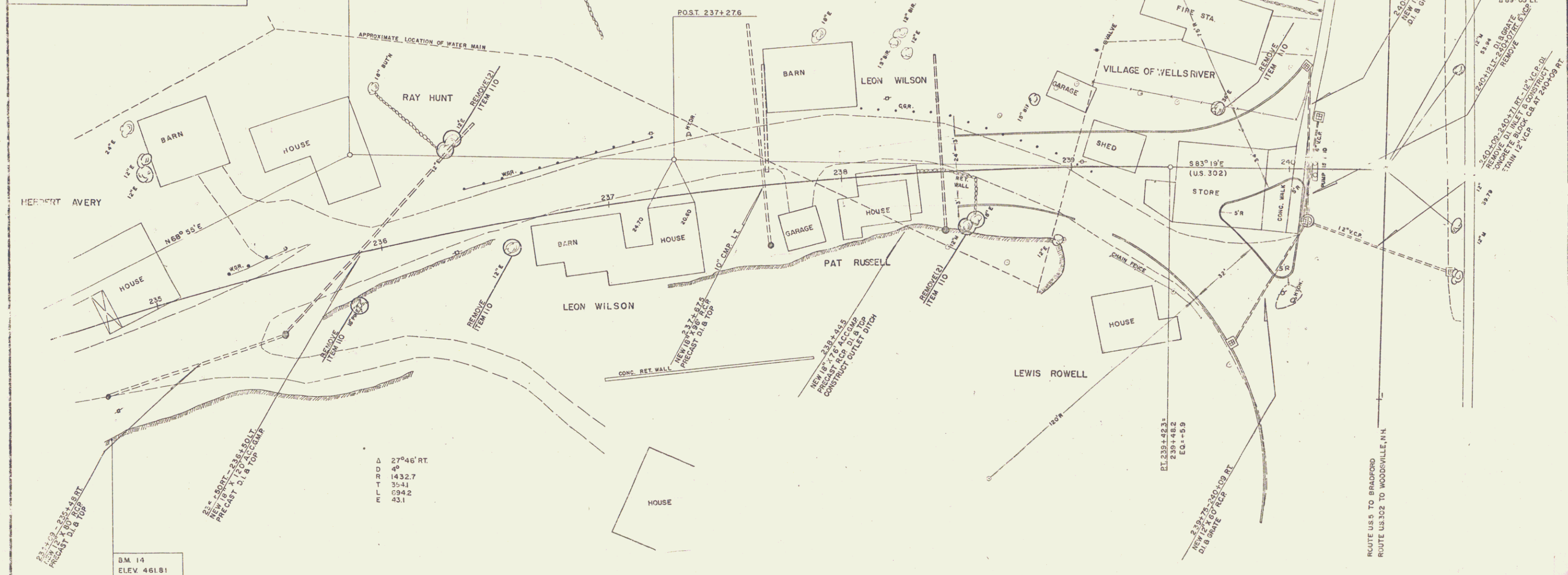


GRANITE SLOPE EDGING ITEM 556-A		
STA.	STA.	POS.
238+50	239+01	RT.
238+50	240+07	LT.
239+17	239+73	RT.
239+69	240+10	RT.
239+77	239+90	RT.

TOPSOIL & SEEDING ITEM 611 & 621		
STA.	STA.	POS.
238+50	239+01	RT.
238+50	240+10	LT.
239+17	239+90	RT.
239+69	240+10	RT.

CONSTRUCT DRIVES	
STA.	
235+09	RT.
235+35	LT.
239+09	RT.
240+12	LT.

DEMOLITION & REMOVAL OF BUILDINGS	
STA.	
234+80	LT.
237+00	RT.
237+85	LT.
238+15	RT.
239+00	LT.
239+18	LT.
239+65	LT.



B.M. 14  
ELEV. 461.81

Δ 27°46' RT.  
 D 4'  
 R 1432.7  
 T 35.41  
 L 594.2  
 E 43.1

NEWBURY File(6)  
 SHEET 18 OF 79 SHEETS  
 SCALE 1" = 20'

WEBSTER-HARTING, INC. CONSULTING ENGINEERS,  
 52 BURLINGTON, VERMONT

20