

DRIVES CONSTRUCTED
235+0-229+50 RT
234+75-236+0

CONSTRUCT DRIVES

STA	POS
229+00	LT
233+50	RT
235+09	RT
235+35	LT
239+09	RT
240+10	RT

GRANITE SLOPE EDGING
ITEM 855-A

STA	POS
238+60	RT
240+07	LT
239+17	RT
239+69	RT
239+77	RT
238+25	LT
239+71	RT

TOPSOIL & SEEDING
ITEMS 811 & 621

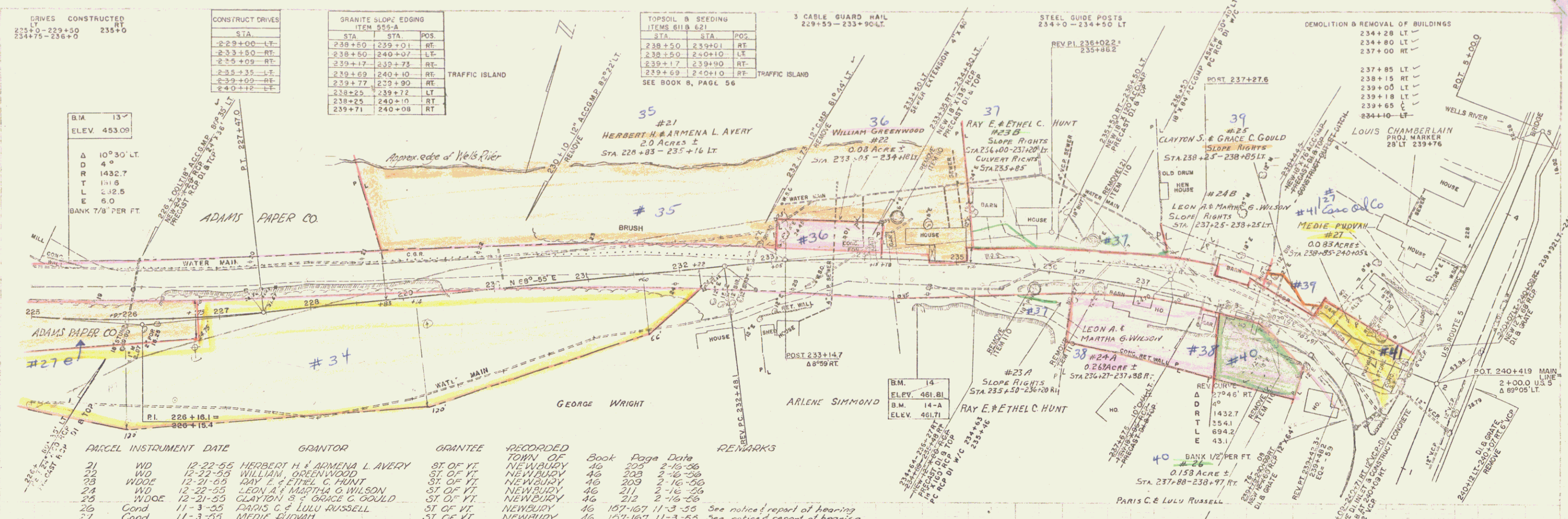
STA	POS
238+50	RT
239+50	LT
239+17	RT
239+69	RT
239+77	RT
238+25	LT
239+71	RT

3 CABLE GUARD RAIL
229+55-233+90 LT

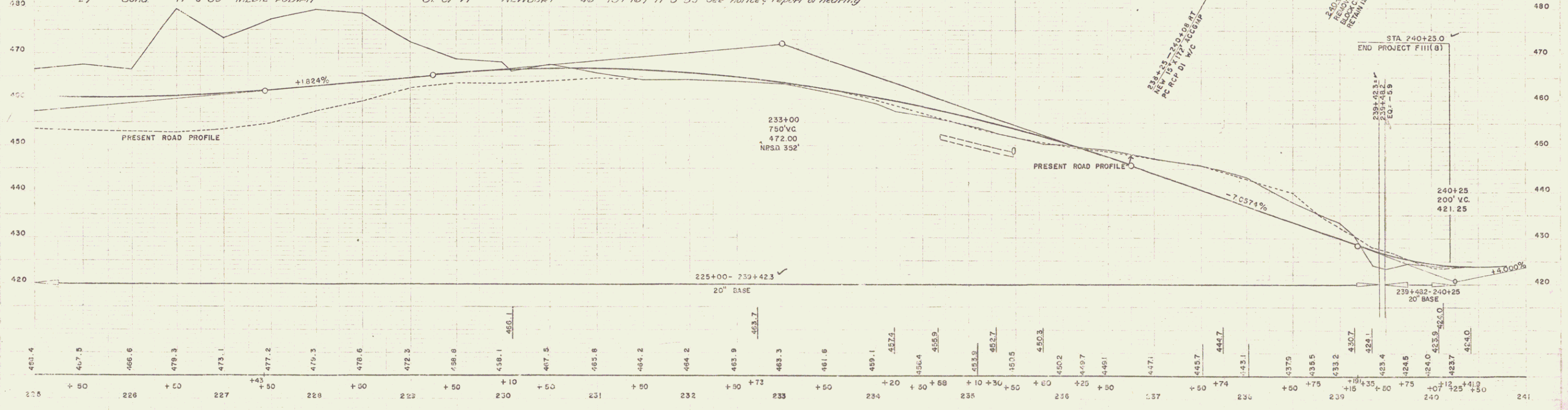
STEEL GUIDE POSTS
234+0-234+50 LT

DEMOLITION & REMOVAL OF BUILDINGS

B.M. 13
ELEV. 453.09
Δ 10°30' LT
D 4°
R 1432.7
T 111.6
L 32.5
E 6.0
BANK 7/8" PER FT.



PARCEL	INSTRUMENT	DATE	GRANTOR	GRANTEE	RECORDED	TOWN OF	BOOK	PAGE	DATE	REMARKS
21	WD	12-22-55	HERBERT H. & ARMENA L. AVERY	ST. OF VT.	NEWBURY	46	205	2-16-56		
23	WDOE	12-21-55	WILLIAM GREENWOOD	ST. OF VT.	NEWBURY	46	209	2-16-56		
24	WD	12-22-55	LEON A. & MARTHA G. WILSON	ST. OF VT.	NEWBURY	46	211	2-16-56		
25	WDOE	12-21-55	CLAYTON S. & GRACE C. GOULD	ST. OF VT.	NEWBURY	46	212	2-16-56		
26	Cond	11-3-55	PARIS C. & LULU RUSSELL	ST. OF VT.	NEWBURY	46	167-167	11-3-55	See notice of report of hearing	
27	Cond	11-3-55	MEDIE FUDWAN	ST. OF VT.	NEWBURY	46	167-167	11-3-55	See notice of report of hearing	



B.M. 13 SPOT ON CONCRETE WALL 62' LT. 225+36 ELEV. 453.09

B.M. 14-A SPOT ON LEDGE 48' RT. 234+48 ELEV. 461.71
B.M. 14 SPOT ON LEWIS 48' RT. 234+48 ELEV. 461.91

NEWBURY F 111 (6)
SHEET 17 OF 79