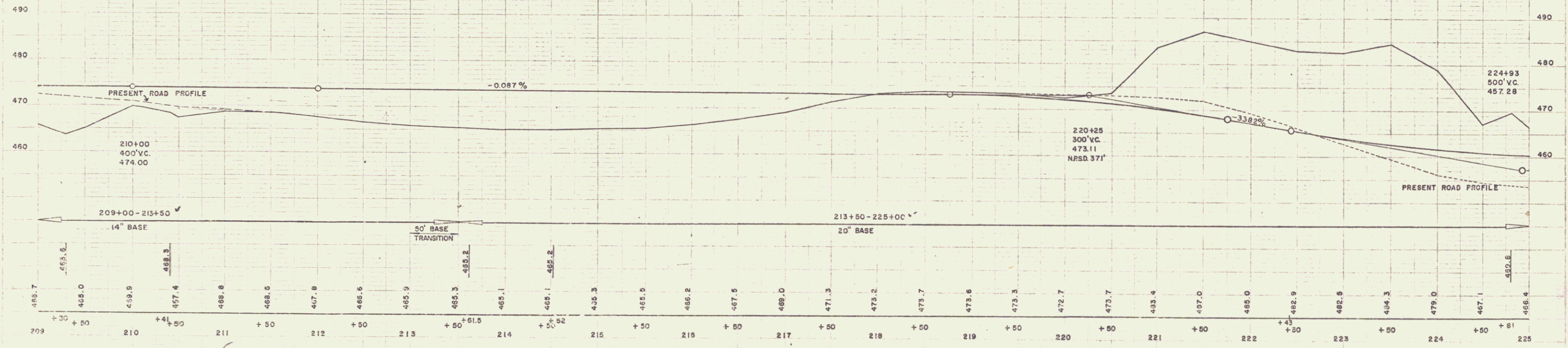
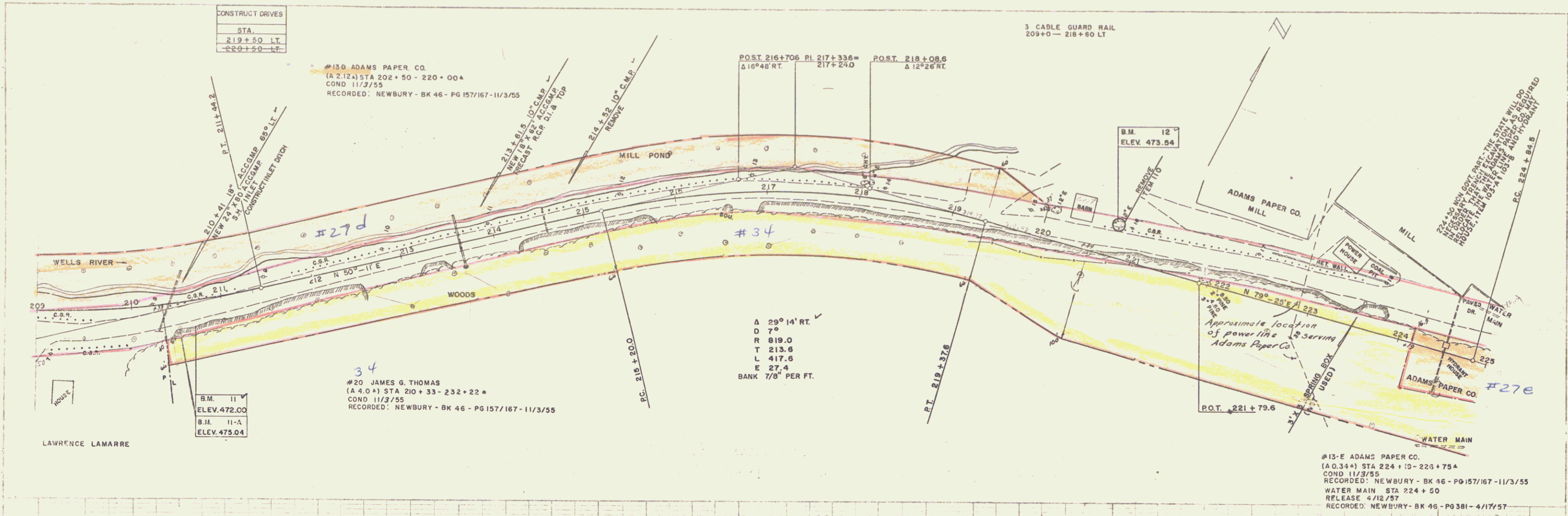


10-54  
11-54  
SPENCER  
WATER-COMM. INC.

10-54  
11-54  
SPENCER  
WATER-COMM. INC.



B.M. 11 SPOT ON LEDGE 27' RT. 210+89 ELEV. 472.00 ✓      B.M. 11-A SPOT ON LEDGE 50' RT 210+50 ELEV. 473.04      B.M. 12 S.I.R. 18" ELM 27' LT. 220+75 ELEV. 473.54 ✓

NEWBURY F 111 (8)  
SHEET 16 OF 79

A 18