

INDEX OF SHEETS

- SHEET NO. 1- TITLE PAGE
- 2- TYPICAL CROSS SECTION OF IMPROVEMENT
- 3- QUANTITY SHEET (ITEMS)
- 4- QUANTITY SHEET (DRAINAGE)
- 5-7- EARTHWORK SHEETS
- 8-15- PLAN AND PROFILE SHEETS
- 16- ROADWAY STANDARD SHEET RS 56-1 (BANKING TABLES)
- 17- ROADWAY STANDARD SHEET RS 56-3 (MARKERS)
- 18- ROADWAY STANDARD SHEET RS 56-4 (DRAINAGE)
- 19- ROADWAY STANDARD SHEET RS 56-6 (TYPICAL GRADING AND TURNOUTS)
- 20- ROADWAY STANDARD SHEET RS 56-9 (SOLID ROCK SUBGRADE)
- 21- ROADWAY STANDARD SHEET RS 56-11 (THREE CABLE GUARD RAIL W/ STEEL POSTS)
- 22- ROADWAY STANDARD SHEET RS 56-12 (BARRIERS, SIGNS AND LIGHTS)
- 23- ROADWAY STANDARD SHEET RS 56-14 (PRECAST CONCRETE PIPES)
- 24-76- CROSS SECTIONS

PROJECT NAME & NUMBER	TYPE	PAVEMENT AREA
NEWBURY DF 026-1(4)	SINGLE TACK COAT OF CUTBACK ASPHALT	26,824 S.Y.
RECORD PLANS MATERIALS		
SUBBASE OF GRAVEL: WELLS RIVER BAR, WELLS RIVER, VT.		
ACCGMP: NEW ENGLAND METAL PIPE CO., WHITE RIVER JUNCTION, VT.		
RCF: VERMONT CONCRETE PIPE CO., WINDSOR, VT.		
CUTBACK ASPHALT: SCCCN, E. PROVIDENCE, R.I.		
CEMENT: PORTLAND: WIRTHMORE FEEDS CO., WOODSVILLE, N.H.		
GUARD RAIL C. BLE & STEEL POSTS: S.T. GRISWOLD CO. INC., ESSEX JUNCTION, VT.		
CONTRACTOR: LUCIEN A. DEMERS, ST. ALBANS, VT.		CONTRACT: JULY 30, 1958
RESIDENT ENG'R: M.W. REDMOND		STARTED: AUG. 6, 1958
INSPECTORS:		COMPLETED: JULY 9, 1959
RECORD PLANS: WASHBURN		ACCEPTED: JULY 9, 1959

STATE OF VERMONT  
DEPARTMENT OF HIGHWAYS

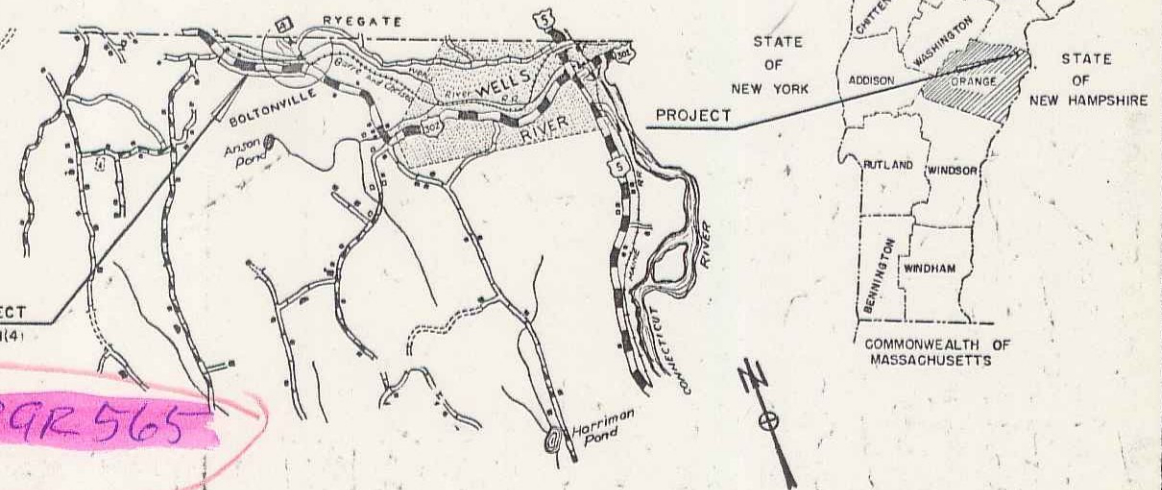
PROPOSED IMPROVEMENT

FEDERAL AID  
PRIMARY PROJECT

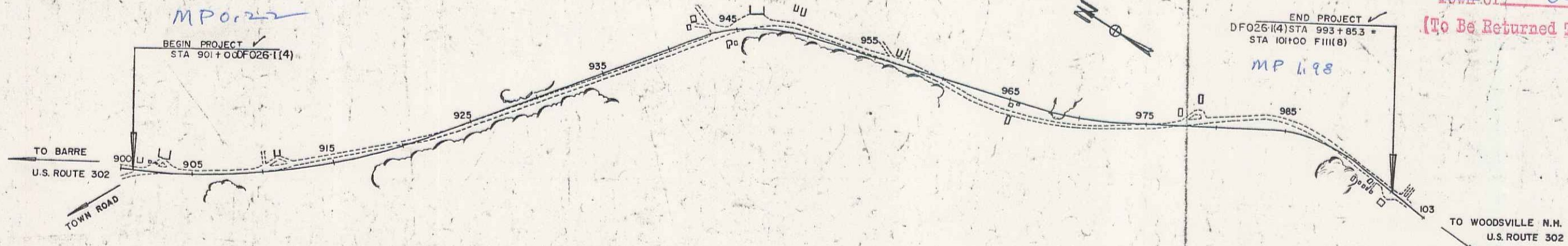
TOWN OF NEWBURY  
COUNTY OF ORANGE  
U.S. ROUTE 302  
WELLS RIVER-SO. RYEGATE ROAD

BEGINNING APPROXIMATELY 2.6 MILES  
WESTERLY OF THE JUNCTION WITH  
ROUTE U.S. 5 AND EXTENDING  
WESTERLY APPROXIMATELY 1.758 MILES

LENGTH OF PROJECT 9285.3 FEET - 1.758 MILES  
DESIGN DESIGNATION  
ADT 1958 800-985  
ADT 1980 1380-2800  
V = (60) M.P.H.



RIGHT-OF-WAY DIVISION  
TOWN FILE  
PERPETUAL  
Town of US-302  
(To Be Returned To R.O.W. Division)



COUNTY	NEWBURY
TOWN	NEWBURY
FENCE	STONE
UNFENCED	TRAVEL
GUARD	RAILROAD
RETAIN	CENTER
SURVEY	CULVERT
DROP	TROLLEY
POWER	TELEPHONE
TREE	
OBSTACLE	

CONTRACTOR: LUCIEN A. DEMERS	RESIDENT ENGINEER: M.W. REDMOND
RECORD PLANS: WASHBURN	COMPLETED: JULY 9, 1959
ACCEPTED: JULY 9, 1959	

SCALES

TITLE	1" = 400'
TYPICAL	1" = 2'
PLAN	1" = 50'
PROFILE HORIZONTAL	1" = 50'
VERTICAL	1" = 10'
CROSS-SECTIONS	1" = 5'

THESE PLANS ARE SUBJECT TO SUCH REVISIONS AS MAY BE REQUIRED BY THE BUREAU OF PUBLIC ROADS OR THE COMMISSIONER OF HIGHWAYS.

CONSTRUCTION IS TO BE CARRIED ON IN ACCORDANCE WITH THE PLANS AND THE STANDARD SPECIFICATIONS FOR HIGHWAY AND BRIDGE CONSTRUCTION OF JANUARY 1956 SUBMITTED TO THE BUREAU OF PUBLIC ROADS AS APPROVED JULY 3, 1956, INCLUDING ALL SUBSEQUENT APPROVED REVISIONS AND SUCH REVISED SPECIFICATIONS AND SPECIAL PROVISIONS AS ARE SUBMITTED WITH THE PLANS.

APPROVED <i>[Signature]</i> CONSTRUCTION ENGINEER DATE <u>June 27, 1958</u>	APPROVED <i>[Signature]</i> BRIDGE ENGINEER DATE	APPROVED <i>[Signature]</i> DISTRICT ENGINEER DATE <u>June 27, 1958</u>	APPROVED <i>[Signature]</i> HIGHWAY ENGINEER DATE <u>June 27, 1958</u>	APPROVED <i>[Signature]</i> DATE <u>June 30, 1958</u> SUBMITTED BY: ORDER OF THE STATE HIGHWAY BOARD	DEPARTMENT OF COMMERCE BUREAU OF PUBLIC ROADS DIVISION ENGINEER DATE
-----------------------------------------------------------------------------------	--------------------------------------------------------	-------------------------------------------------------------------------------	------------------------------------------------------------------------------	------------------------------------------------------------------------------------------------------------	-------------------------------------------------------------------------------

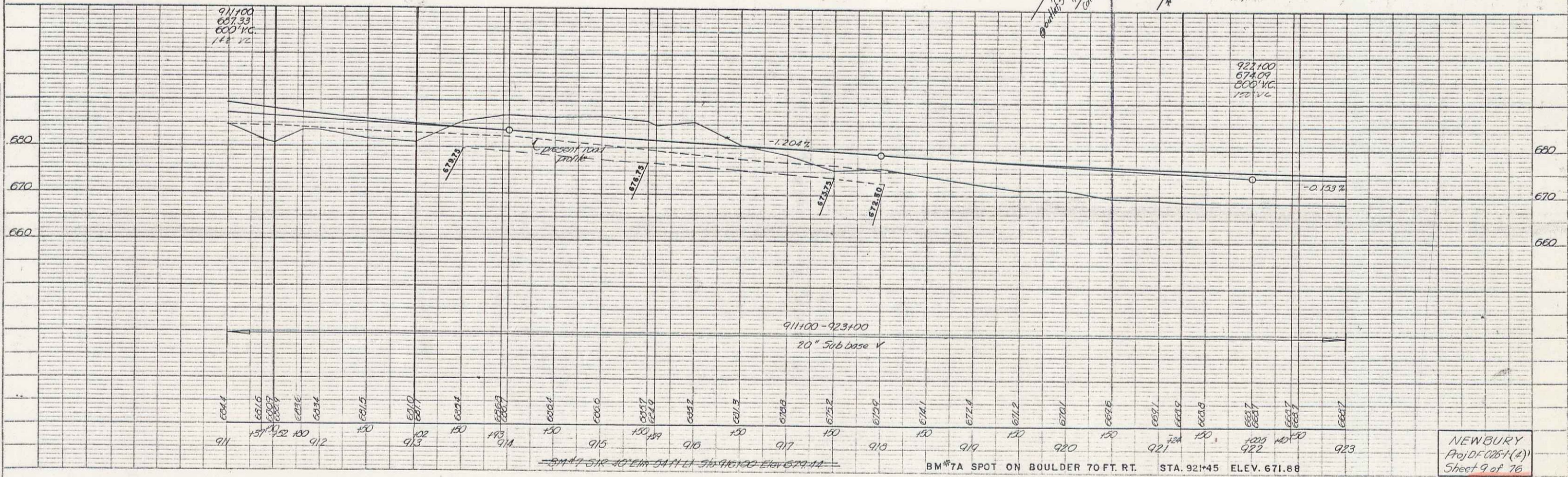
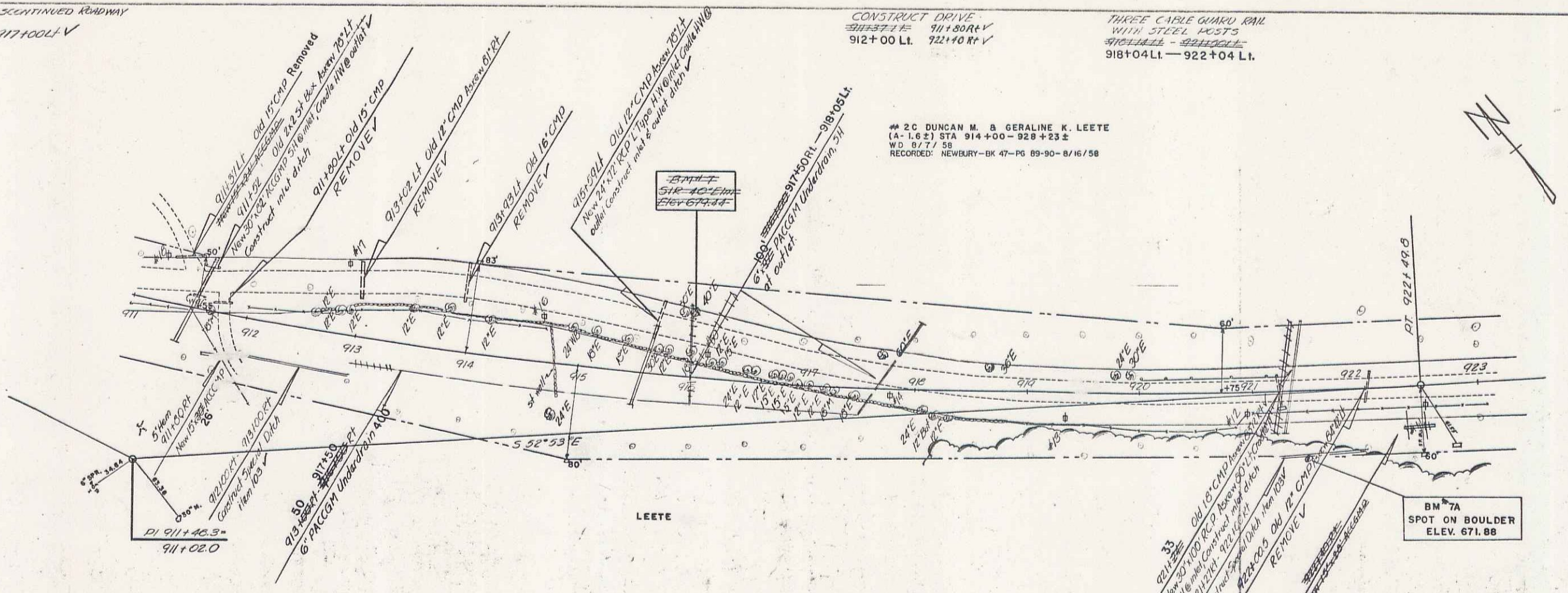
PROJECT DF No. 026-1(4)	SHEET 1 OF 76 SHEETS
-------------------------	----------------------



SHEET NO. 9  
 DATE: 11/23/58  
 DRAWN BY: G. S. DUNN  
 CHECKED BY: G. S. DUNN  
 PROJECT: NEWBURY  
 SHEET: 9 OF 16

SHEET NO. 9  
 DATE: 11/23/58  
 DRAWN BY: G. S. DUNN  
 CHECKED BY: G. S. DUNN  
 PROJECT: NEWBURY  
 SHEET: 9 OF 16

EXCAV OF DISCONTINUED ROADWAY  
 SURFACE  
 912+00 LI - 917+00 LI V



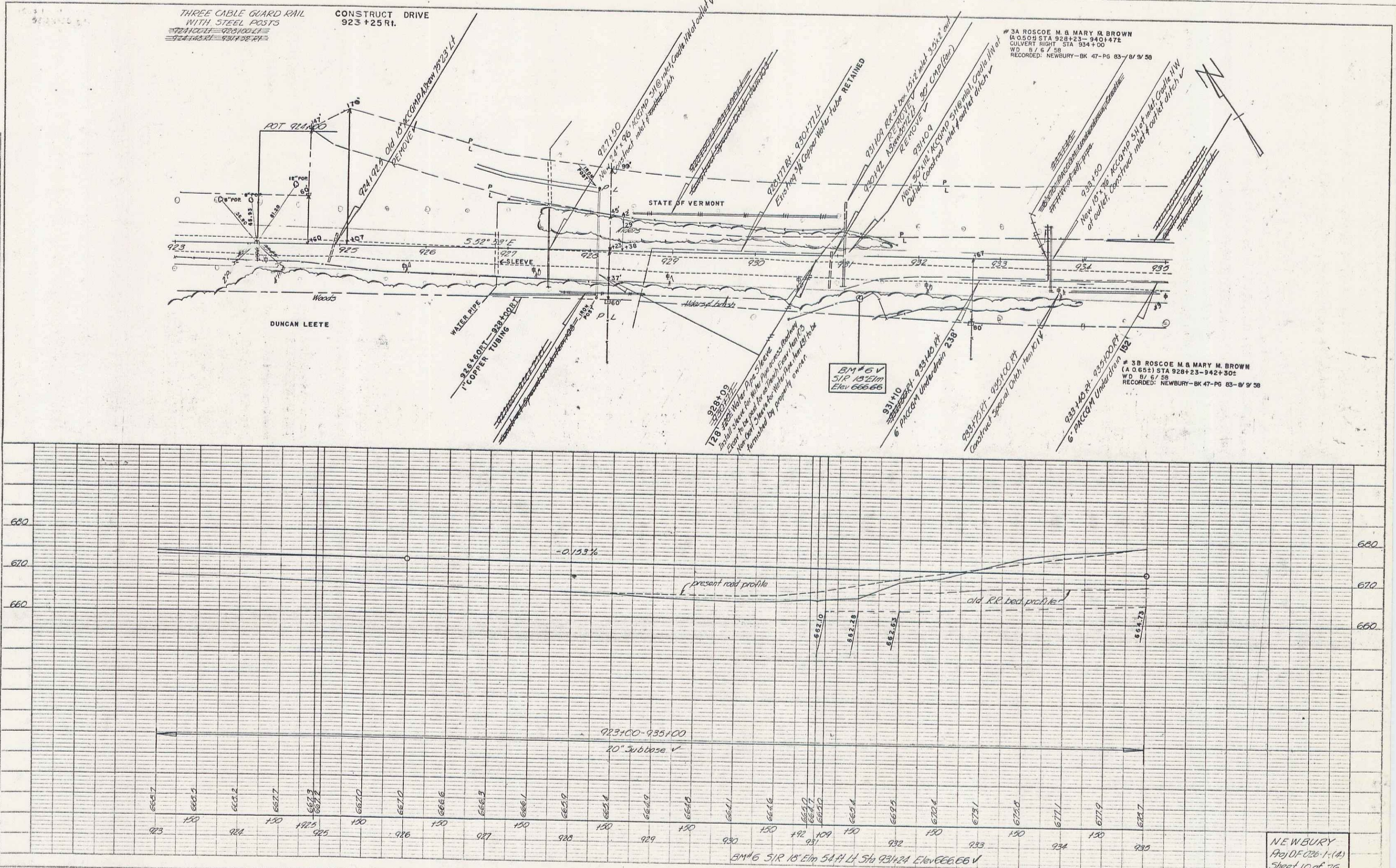
Printed in U.S.A.  
 Co. 28570001, Trading Co.

PLATE 1 PLAN PROFILE & P. IN STANDARD  
 ENGINEERING CO. CHICAGO, ILL. 60601

Printed in U.S.A.  
 Co. 28570001, Trading Co.

PLAN  
 DRAWN BY: [Name]  
 CHECKED BY: [Name]  
 DATE: [Date]

PROFILE  
 DRAWN BY: [Name]  
 CHECKED BY: [Name]  
 DATE: [Date]



NEWBURY  
 Proj. 01-026-1-(4)  
 Sheet 10 of 76

PLATE 1 PLAN PROFILE B 7 1/2" STANDARD  
 REVISIONS TO STANDARD

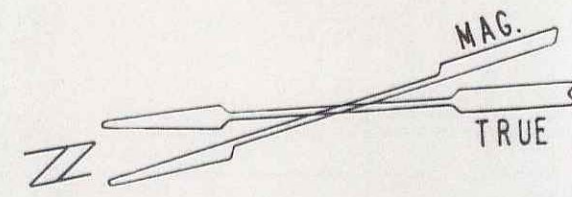
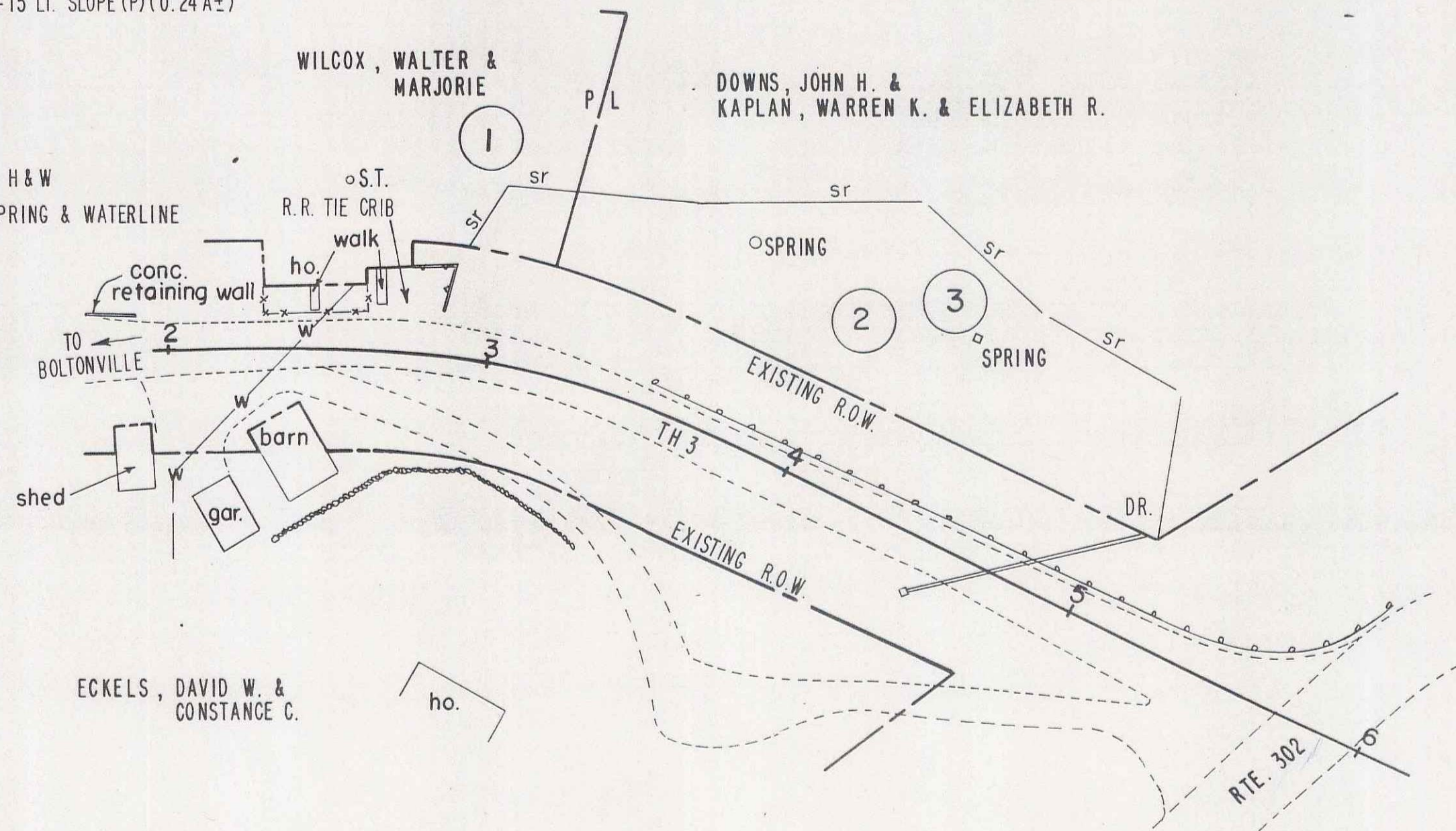
4

WILCOX, WALTER & MARJORIE H&W  
 PARCEL 1 BEG. STA. 2+80 LT. — END STA. 3+15 LT. SLOPE (P) (560 S.F.±)

DOWNES, JOHN H. & KAPLAN, WARREN K. & ELIZABETH R. H&W  
 PARCEL 2 BEG. STA. 3+15 LT. — END STA. 5+15 LT. SLOPE (P) (0.24 A±)  
 STA. 3+62 LT. SPRING  
 STA. 4+36 LT. SPRING  
 STA. 5+13 LT. DRAINAGE (P)

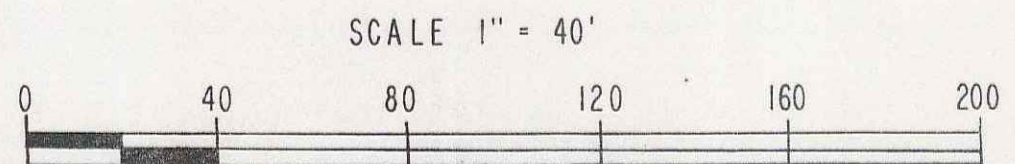
ECKELS, DAVID W. & CONSTANCE C. H&W  
 PARCEL 3 STA. 4+36 LT.± ALL R.T.&I SPRING & WATERLINE

MPO102



US 302

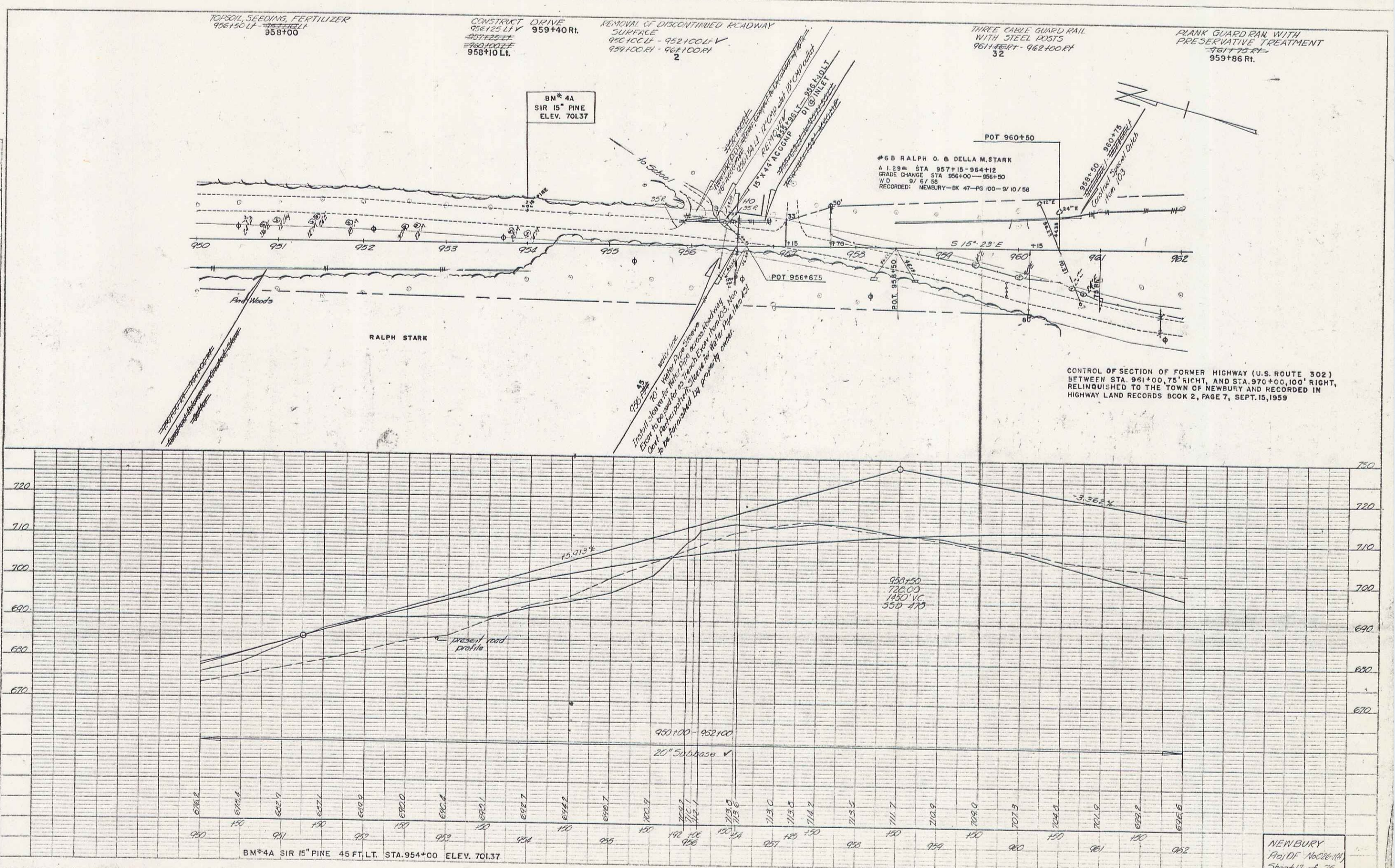
STATE OF VERMONT DEPT. OF HIGHWAYS		
TOWN OF NEWBURY		
PROJECT NEWBURY RHS 1517(1) <i>11A OF 76</i>		
APPROX. SCALE 1" = 40'	DATE 10-13-76	DRAWN BY <i>KJP</i> 5





PLAN  
 DATE: 11/23/58  
 DRAWN BY: G. S. Dunning  
 CHECKED BY: G. S. Dunning  
 PROJECT: 11/23/58

PROFILE  
 DATE: 11/23/58  
 DRAWN BY: G. S. Dunning  
 CHECKED BY: G. S. Dunning  
 PROJECT: 11/23/58



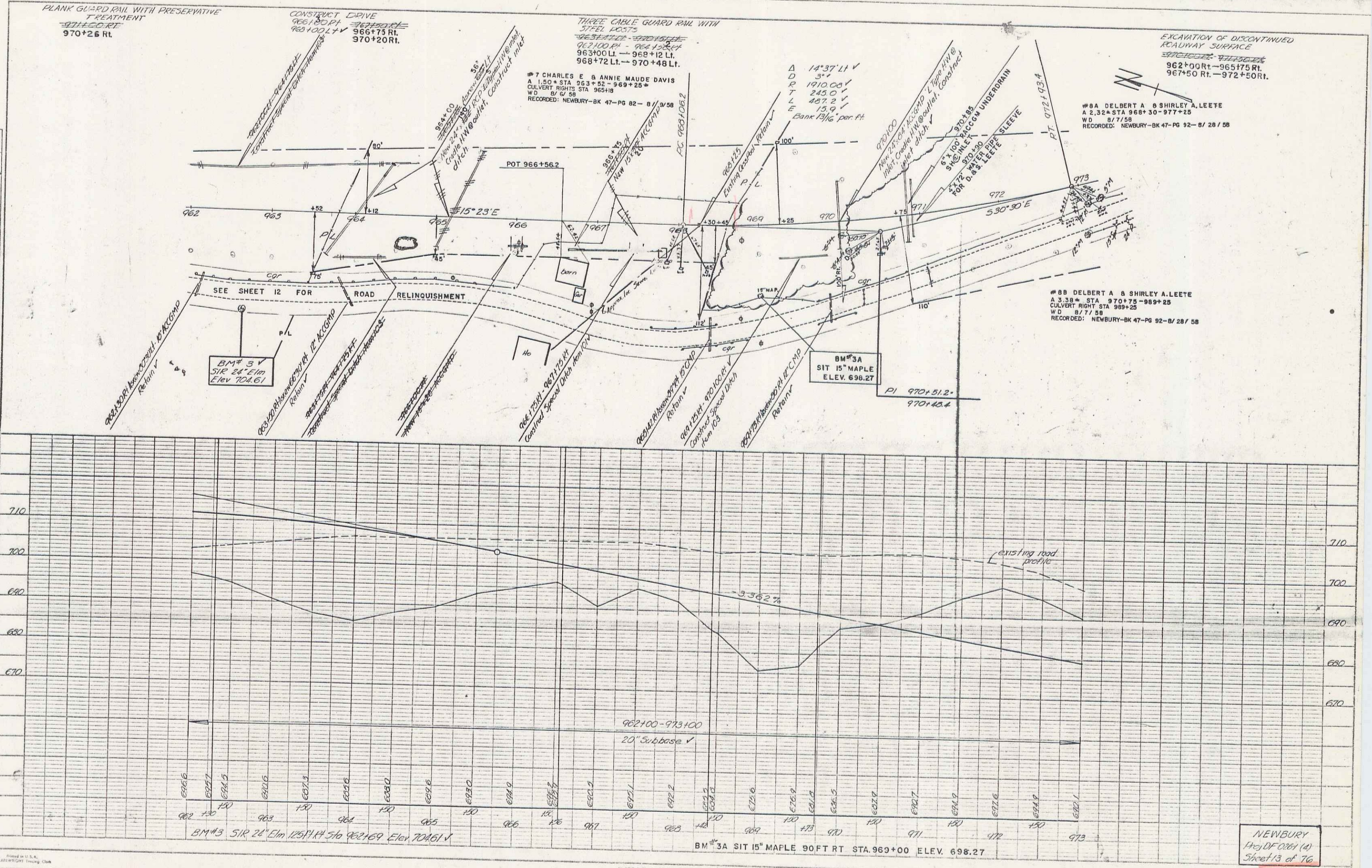
BM\*4A SIR 15" PINE 45 FT. LT. STA. 954+00 ELEV. 701.37

NEWBURY  
 Proj. No. 16228-148  
 Sheet 12 of 76

PLATE 1 PLAN, PROFILE & P. & B. RECORDS  
 SCALE: PLAN 1" = 40' PROFILE 1" = 10' P. & B. 1" = 10'

PLAN  
 DRAWN BY: [Signature]  
 CHECKED BY: [Signature]  
 DATE: 8/7/58

PROFILE  
 DRAWN BY: [Signature]  
 CHECKED BY: [Signature]  
 DATE: 8/7/58

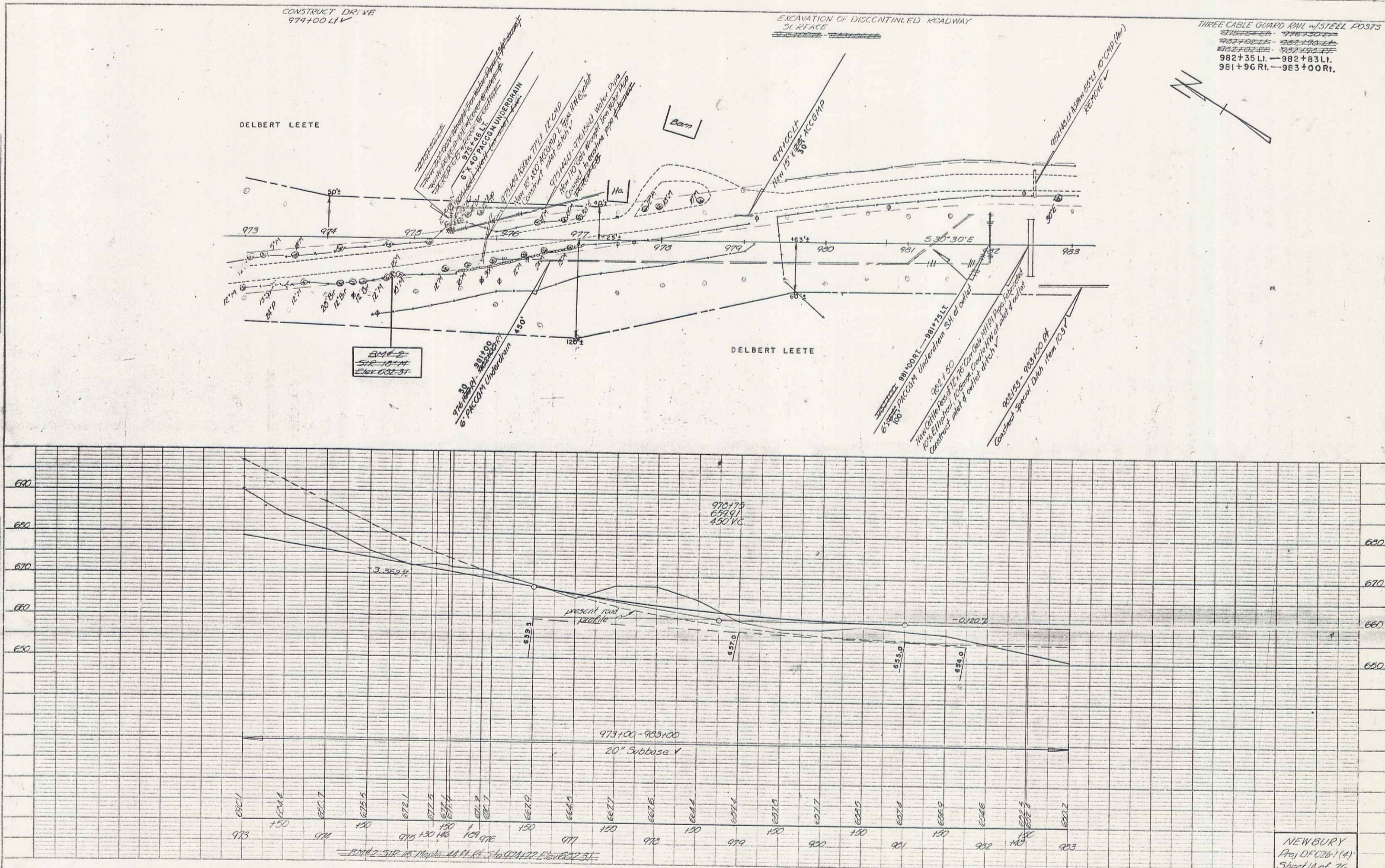


NEWBURY  
 Proj. JF 0281 (A)  
 Sheet 13 of 16

8

PLAN  
 DRAWN BY: [Signature]  
 CHECKED BY: [Signature]  
 DATE: 10/25/2011

PROFILE  
 DRAWN BY: [Signature]  
 CHECKED BY: [Signature]  
 DATE: 10/25/2011



THREE CABLE GUARD RAIL w/ STEEL POSTS  
 980+00 RL - 982+00 RL  
 982+35 LI - 982+83 LI  
 981+96 RL - 983+00 RL

NEWBURY  
 Proj DFC26-1 (4)  
 Sheet 14 of 16

PLATE 1 PLAN PROFILE 0.8" = 1'-0"  
 DATE: 10/25/2011

