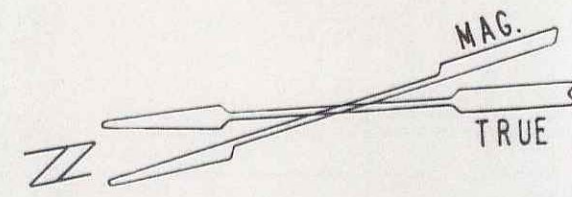
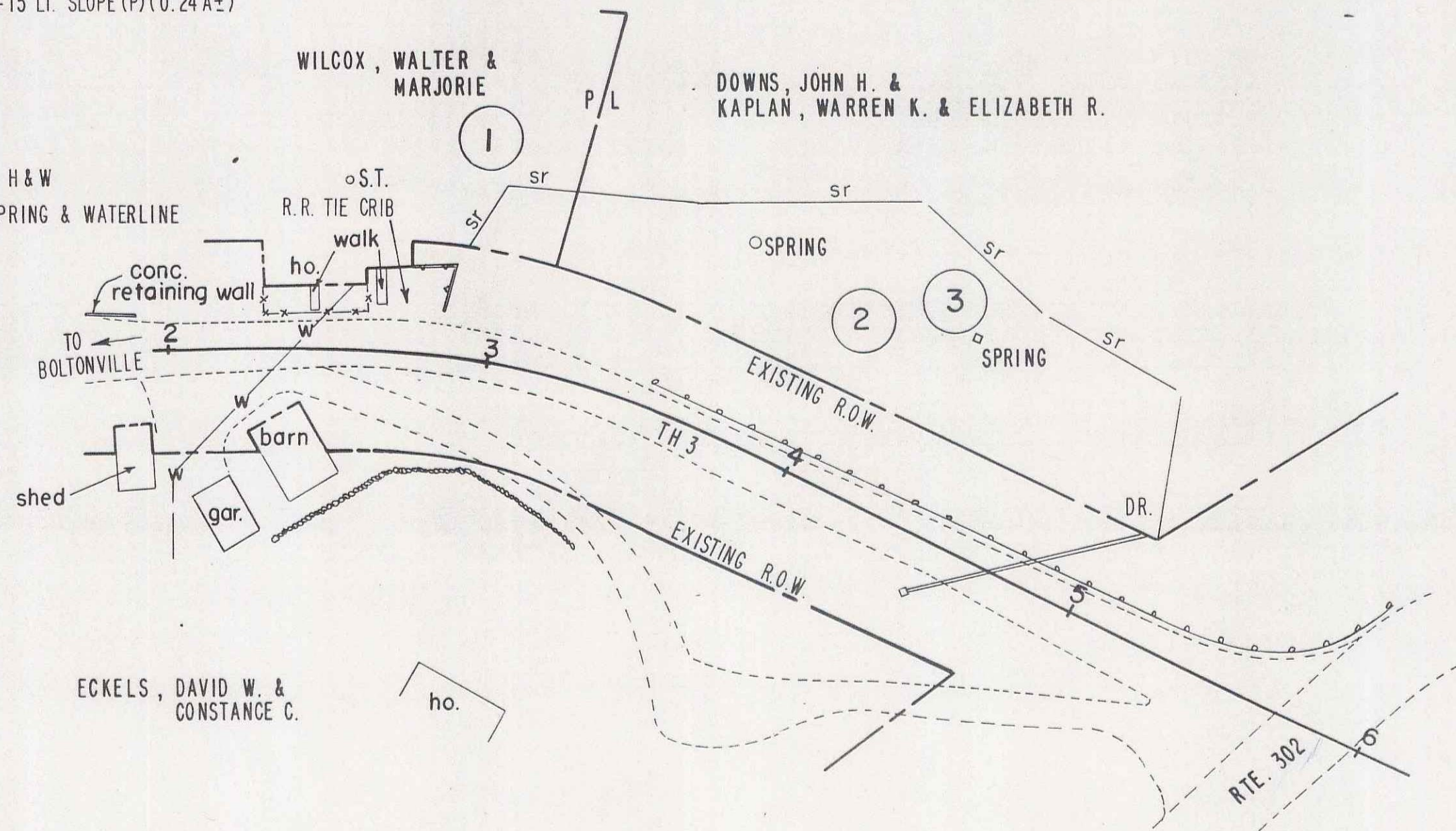


WILCOX, WALTER & MARJORIE H&W
 PARCEL 1 BEG. STA. 2+80 LT. — END STA. 3+15 LT. SLOPE (P) (560 S.F.±)

DOWNES, JOHN H. & KAPLAN, WARREN K. & ELIZABETH R. H&W
 PARCEL 2 BEG. STA. 3+15 LT. — END STA. 5+15 LT. SLOPE (P) (0.24 A±)
 STA. 3+62 LT. SPRING
 STA. 4+36 LT. SPRING
 STA. 5+13 LT. DRAINAGE (P)

ECKELS, DAVID W. & CONSTANCE C. H&W
 PARCEL 3 STA. 4+36 LT.± ALL R.T.&I SPRING & WATERLINE

MPO102



US 302

STATE OF VERMONT DEPT. OF HIGHWAYS		
TOWN OF NEWBURY		
PROJECT NEWBURY RHS 1517(1)		
APPROX. SCALE 1" = 40'	DATE 10-13-76	DRAWN BY KJP 5

