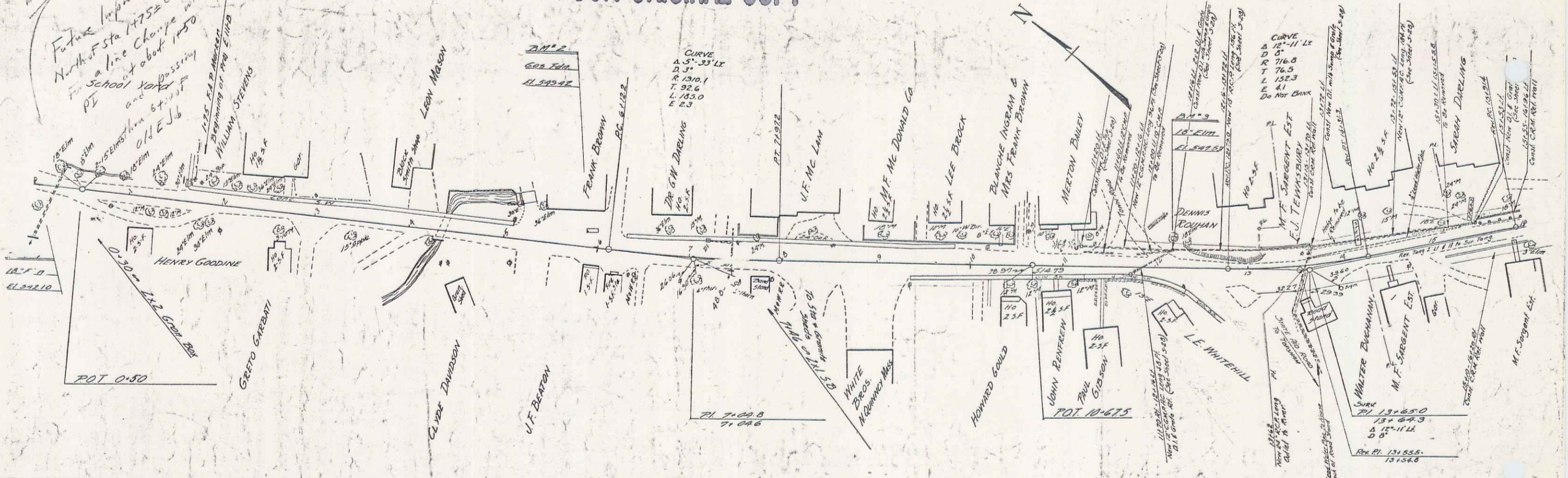


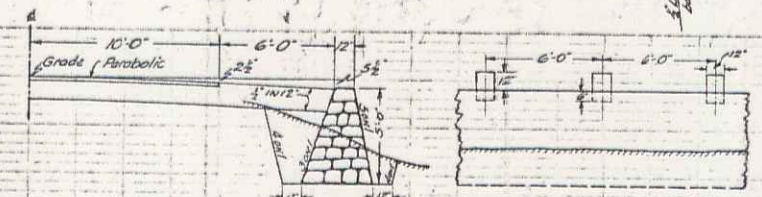
POOR ORIGINAL COPY

Future Improvement  
North of Sta 1475E City  
a line change with  
at about 1450  
PL  
SCHOOL YARD  
and  
MISERABLE STATE  
O.I.E. Job

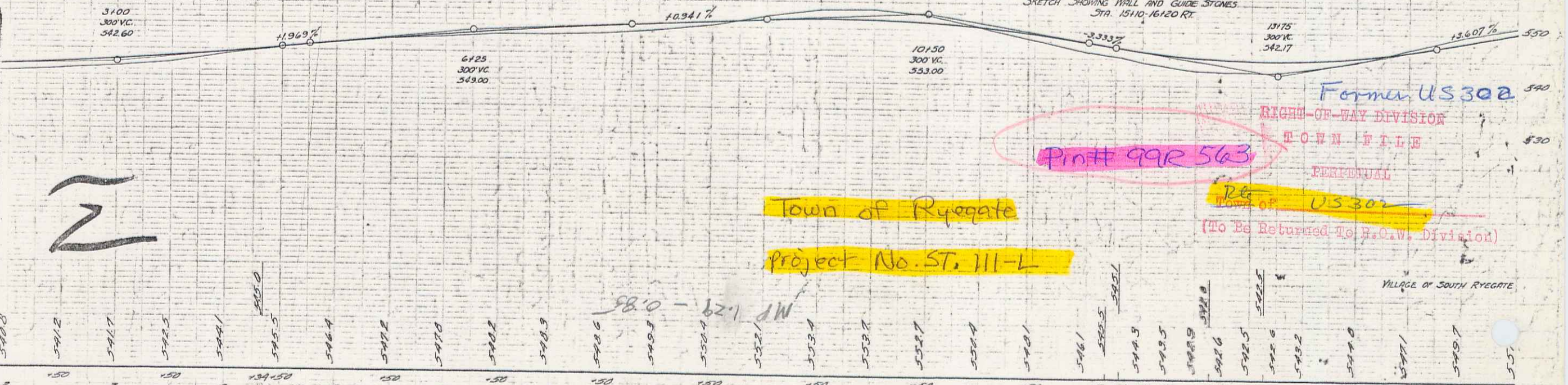
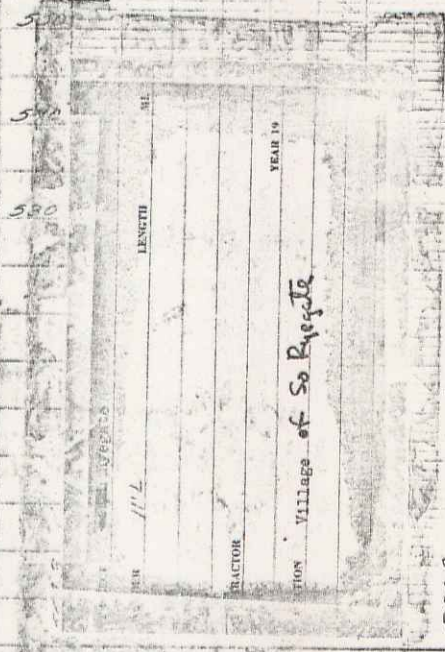


Keep  
Ryegate 38

NOTE:  
At such time as this project is constructed a 2" iron pipe  
to act as a sleeve for water pipe is to be laid across the  
road by the contractor at approximately Sta. 15150 and  
another sleeve at approximately Sta. 16190.



NOTE:  
This wall is designed and shown  
on the cross-sections at a location  
in reference to the center line in  
accordance with the understanding  
between the owner, F.L. Tankersley,  
and the Highway Department.



Former U.S. 302

RIGHT-OF-WAY DIVISION

TOWN FILE

Print 992 563

Perpetual

(To Be Returned To R.O.W. Division)

Town of Ryegate

Project No. ST. 111-L

2 M 1 SPIKE IN ROOT OF 10' ELM 17.5 RT STA 0100 ELEV 548.10  
2 M 2 SPOT ON SOCCONY GAS PUMP F.D.M. 15.3' LT STA 5187 ELEV 549.42  
2 M 3 SPIKE IN ROOT OF 10' ELM 28.5' LT STA 1227 ELEV 542.53

11139  
SERIES ST. 111-L  
SHEET 1 OF 3