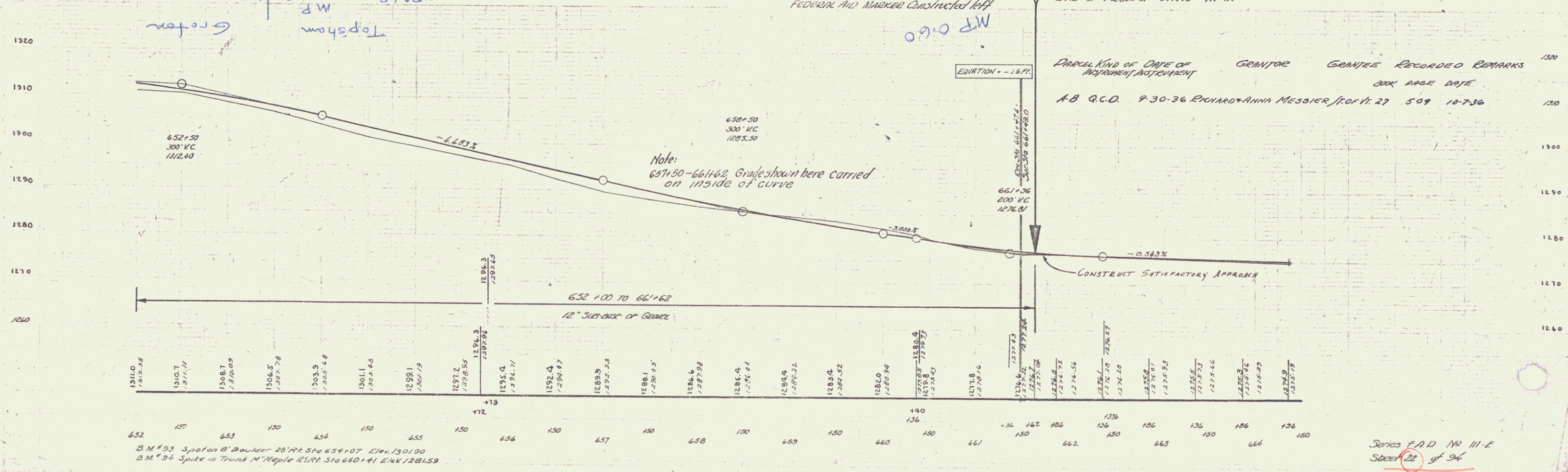
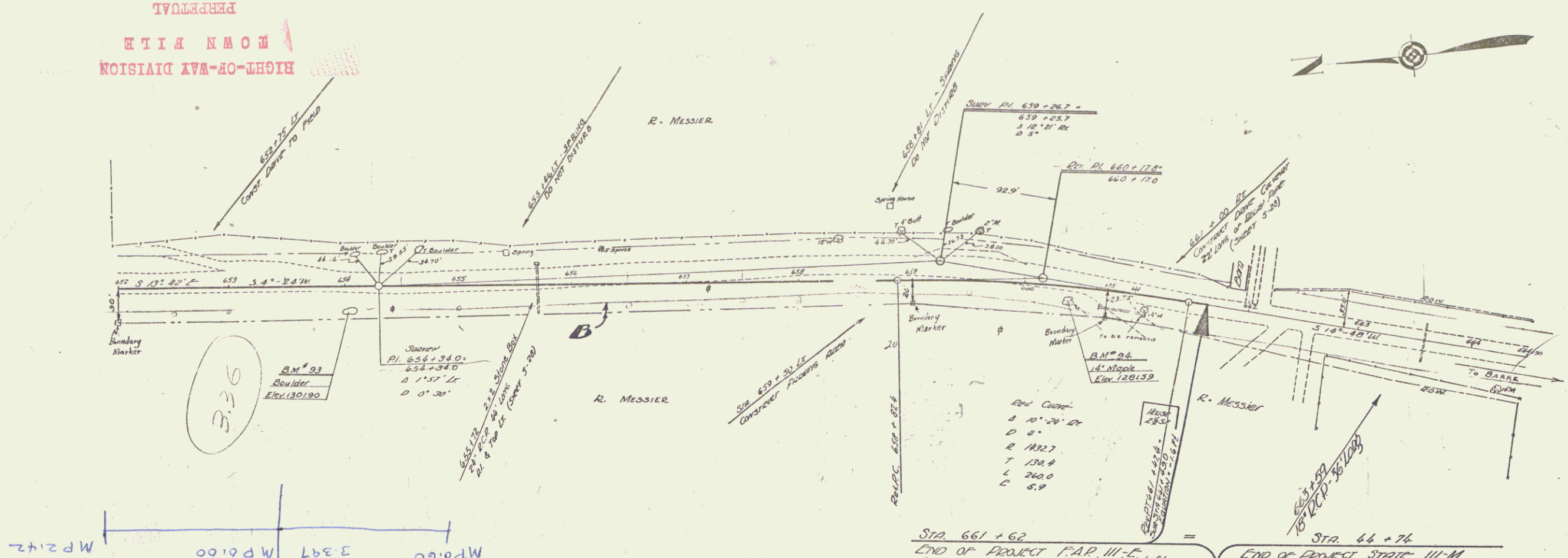


(To Be Returned To R.O.W. Division)

RIGHT-OF-WAY DIVISION  
TOWN OF  
PERPETUAL

STATE OF ILLINOIS  
JAN 22 1937



B.M. #93 Spot on B Boulder Sta 654+07 Elev. 1301.90  
B.M. #94 Spike in Trunk N Maple Sta 660+41 Elev. 1281.59

Series F.A.D. No. 111-E  
Sheet 22 of 94