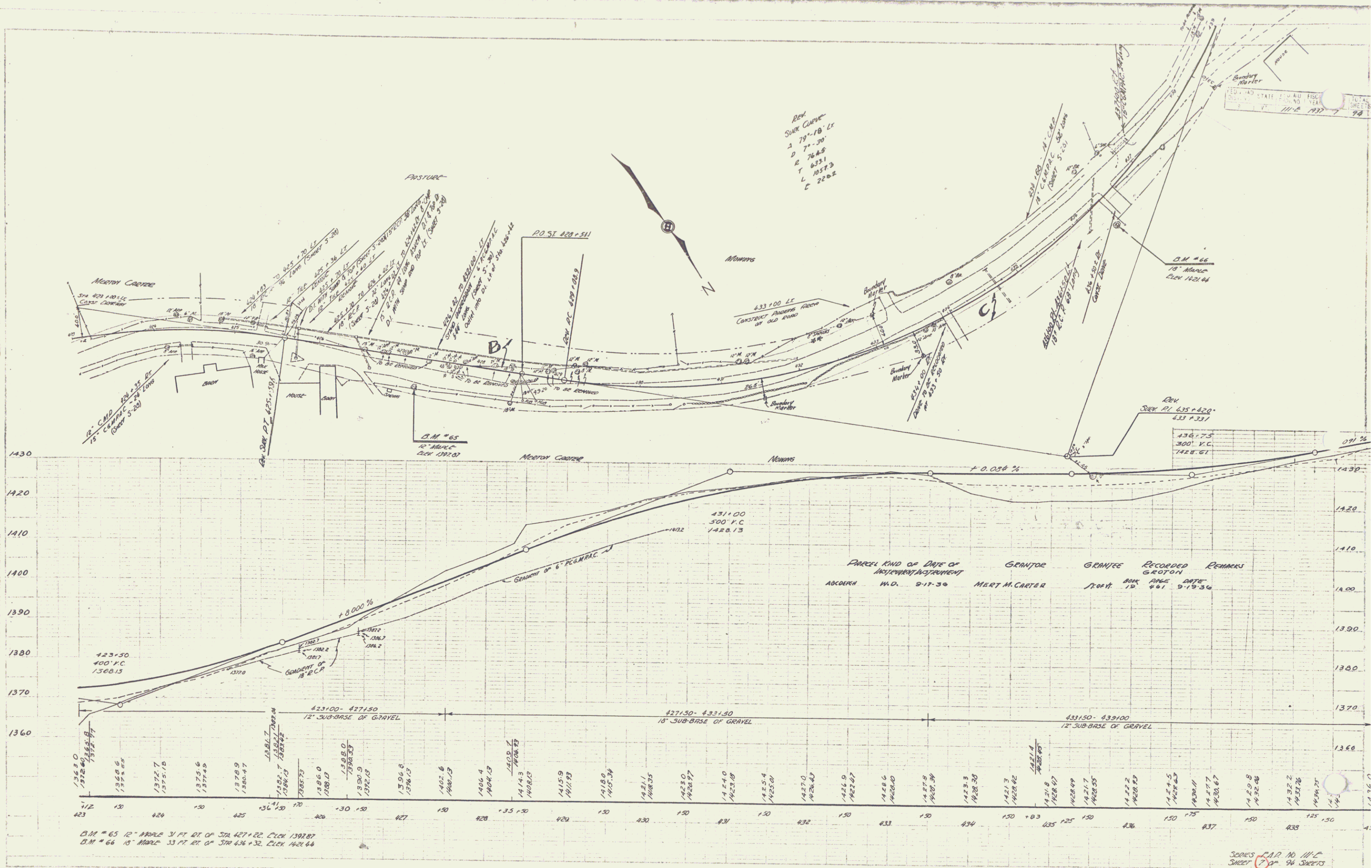


EDWARD STATE ROAD FILE  
 COUNTY OF ...  
 11-2-1937

REV  
 SURV COMP  
 A 79°-18' LE  
 B 77°-30'  
 C 76°-48'  
 T 10313  
 L 10573  
 C 2266



B.M. # 65 12" IRON 3/4" PT. RT. OF STA. 427+22. CL. 1392.87  
 B.M. # 66 18" IRON 3/4" PT. RT. OF STA. 436+32. CL. 1421.64

SEVEN CAR NO. 111-C  
 SHEET 7 OF 24 SHEETS

6