

**GUARD RAIL REQUIRED ON LEFT**

Sta 289-70 to 289-94	Length 24 ft
294-66	24
297-09	24
297-81	24
301-02	24
ON RIGHT	
Sta 289-70 to 289-94	Length 24
294-66	24
297-08	24
297-83	32
301-07	24
TOTAL THIS SHEET 200 ft	

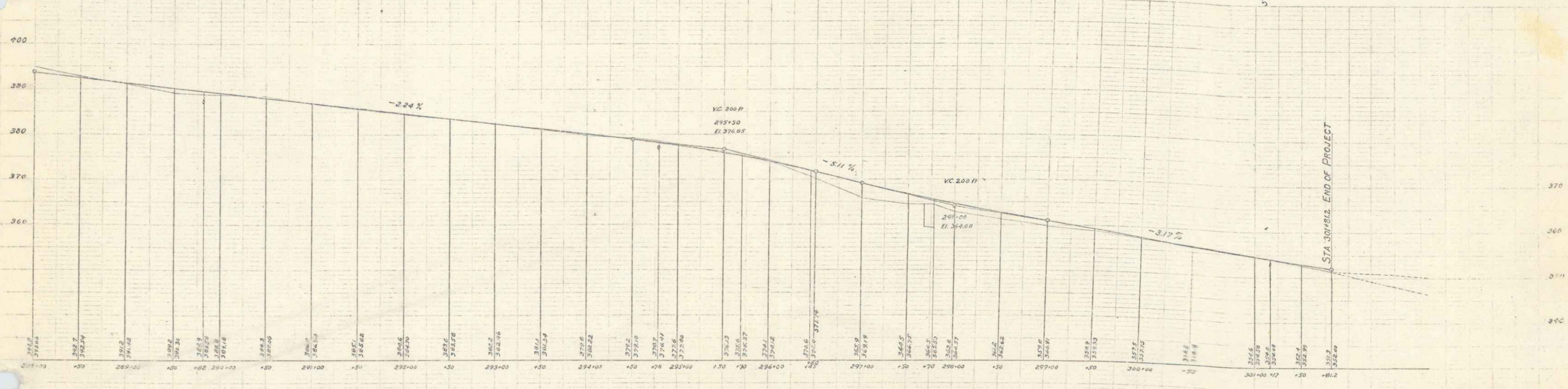
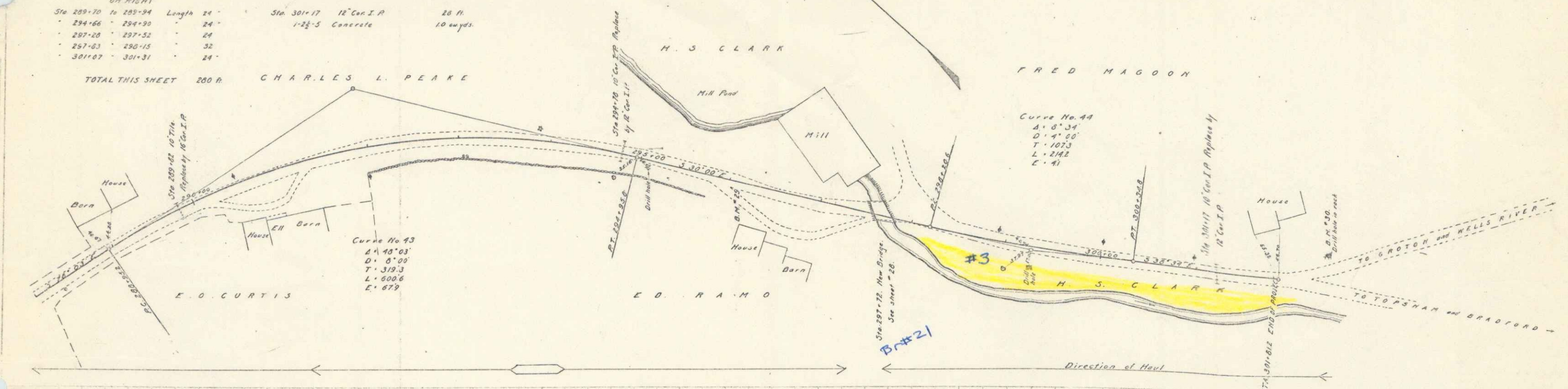
**NEW CULVERTS REQUIRED**

Sta 289-82	18" Con I.P.	32 ft
292-15	1-2 1/2" Concrete	15 weyds
Sta 294-78	12" Con I.P.	30 ft
301-17	1-2 1/2" Concrete	10 weyds
301-17	12" Con I.P.	28 ft
301-17	1-2 1/2" Concrete	10 weyds

**SUB BASE REQUIRED**

Sta 289-00 to 294-78	596 ft
292-15	483.5
TOTAL THIS SHEET 1081.2 ft	

FED ROAD DIST AC	STATE	FED AID PROJ NO	CONTRACT NO	SHEET NO	TOTAL SHEETS
5	VT	37	1827	22	63



B.M. 23 Bottom of Corner Board, N.E. Corner of House Right of Sta 296+21 Elev 378.17  
 B.M. 30 Drill Hole in Rock Beyond End of Project on Left Side of Wells River Road Elev 353.57