

**GUARD RAIL REQUIRED**

**ON LEFT**

Sta. 261-62 to 261-86	Length 24 ft.
262-01 262-25	24 "
263-04 263-28	24 "
264-03 264-27	24 "
265-01 265-25	24 "
266-04 266-28	24 "
267-03 267-27	24 "
268-01 268-25	24 "
269-04 269-28	24 "
270-03 270-27	24 "

**ON RIGHT**

Sta. 261-75 to 261-99	Length 24 ft.
262-14 262-38	24 "
263-13 263-37	24 "
264-12 264-36	24 "
265-11 265-35	24 "
266-10 266-34	24 "
267-09 267-33	24 "
268-08 268-32	24 "
269-07 269-31	24 "
270-06 270-30	24 "

**New CULVERTS REQUIRED**

Sta. 275-02	16" Con.I.P.	28 ft.
1-22-5	Concrete	15 cu yds.

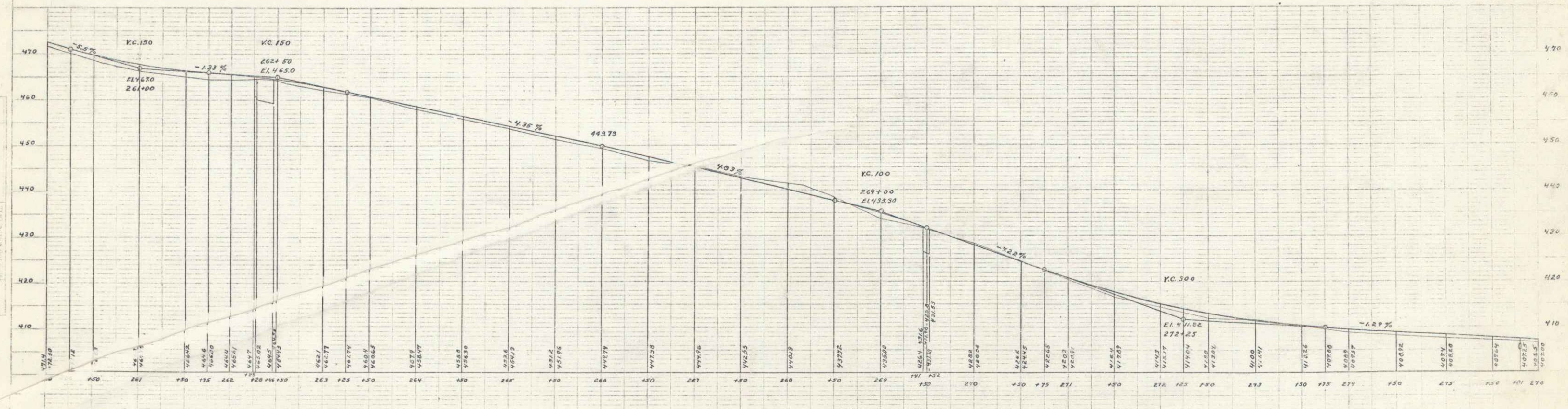
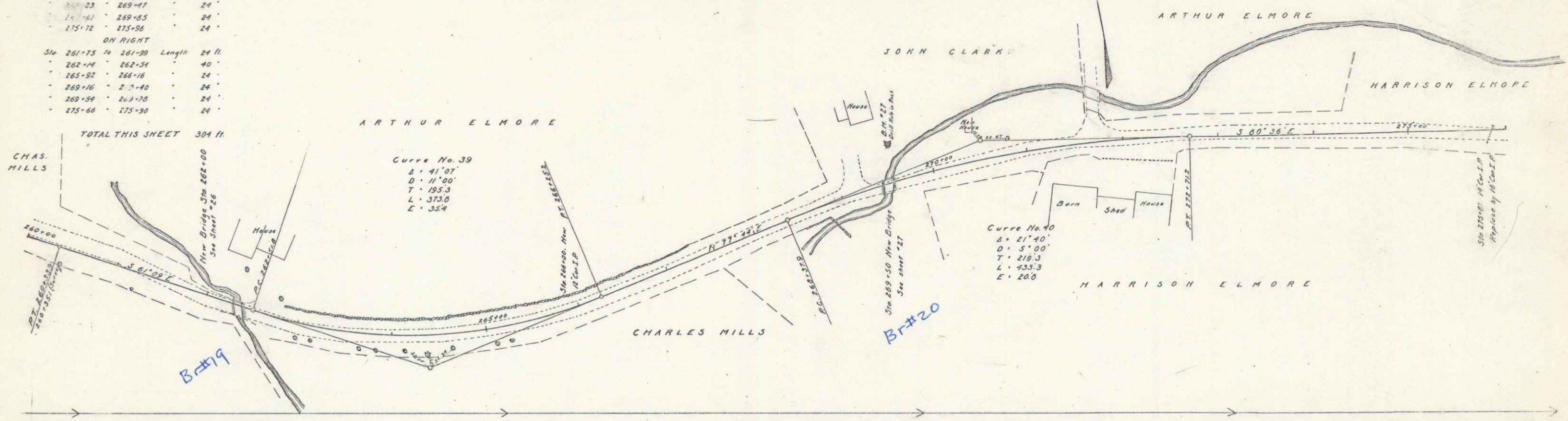
**New CULVERTS REQUIRED**

Sta. 266-00	12" Con.I.P.	30 ft.
1-23-5	Concrete	1.0 cu yds.

**SUB. BASE REQUIRED**

Sta. 271-30 to 276-00	Length 450 ft.
-----------------------	----------------

FEED ROAD	STATE	TERMINI	CONTRACT	TOTAL
5	VT	32	1421	20 6.0



PLS  
 H. B. ...  
 H. B. ...  
 H. B. ...

PLS  
 H. B. ...  
 H. B. ...  
 H. B. ...