

**GUARD RAIL REQUIRED**

**ON LEFT**

Sta. 247+40 to 247+64	Length 24 ft.
248+39 to 248+63	24 "
249+54 to 249+78	24 "
252+63 to 252+87	24 "
254+36 to 254+60	24 "
255+63 to 255+87	24 "
257+41 to 257+65	24 "
257+73 to 257+97	24 "

**ON RIGHT**

Sta. 244+30 to 248+02	Length 392 ft.
249+59 to 249+83	24 "
252+65 to 252+89	24 "
254+61 to 254+85	24 "
257+35 to 257+59	24 "
257+68 to 257+92	24 "

**NEW CULVERTS REQUIRED**

Sta. 248+71	12" Con. I. P.	30 ft.
1-2 1/2-5	Concrete	10 cu yds.
Sta. 248+67	12" Con. I. P.	30 ft.
1-2 1/2-5	Concrete	10 cu yds.
Sta. 251+71	10" Con. I. P.	32 ft.
1-2 1/2-5	Concrete	15 cu yds.

**RELAYING PIPE CULVERTS**

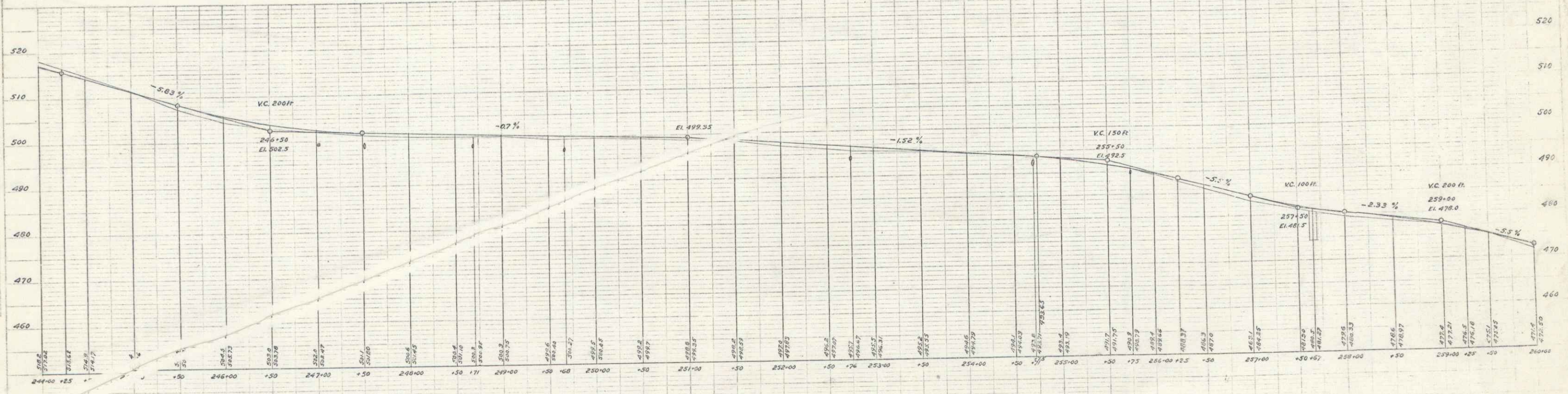
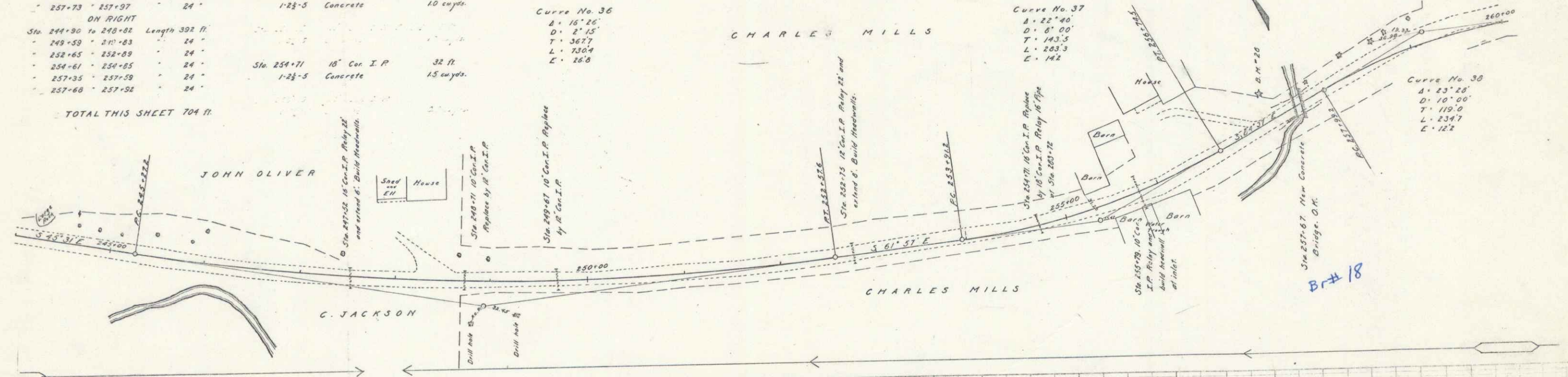
Sta. 247+52	10" Con. I. P. Relay 22 ft.
Sta. 252+75	12" Con. I. P. Relay 22 ft.
Sta. 255+79	10" Con. I. P. Relay 36 ft.

**CULVERT REPAIRS REQUIRED**

Sta. 247+52	10" Con. I. P. Extend 6 ft.	1.5 cu yds.
1-2 1/2-5	Concrete	
Sta. 252+75	12" Con. I. P. Extend 8 ft.	1.0 cu yds.
1-2 1/2-5	Concrete	
Sta. 255+79	10" Con. I. P.	0.5 cu yds.
1-2 1/2-5	Concrete	

FED. ROAD DIST. NO.	STATE	FED. AID PROJ. NO.	CONTRACT NO.	SHEET NO.	TOTAL SHEETS
5	VT	3-2	V-57	13	69

TOTAL THIS SHEET 704 ft.



B.M.P.E. Spike in Tamarack Left of Sta 257+30 Elev 482.58

Sheet 13 of 69  
Series 170.57