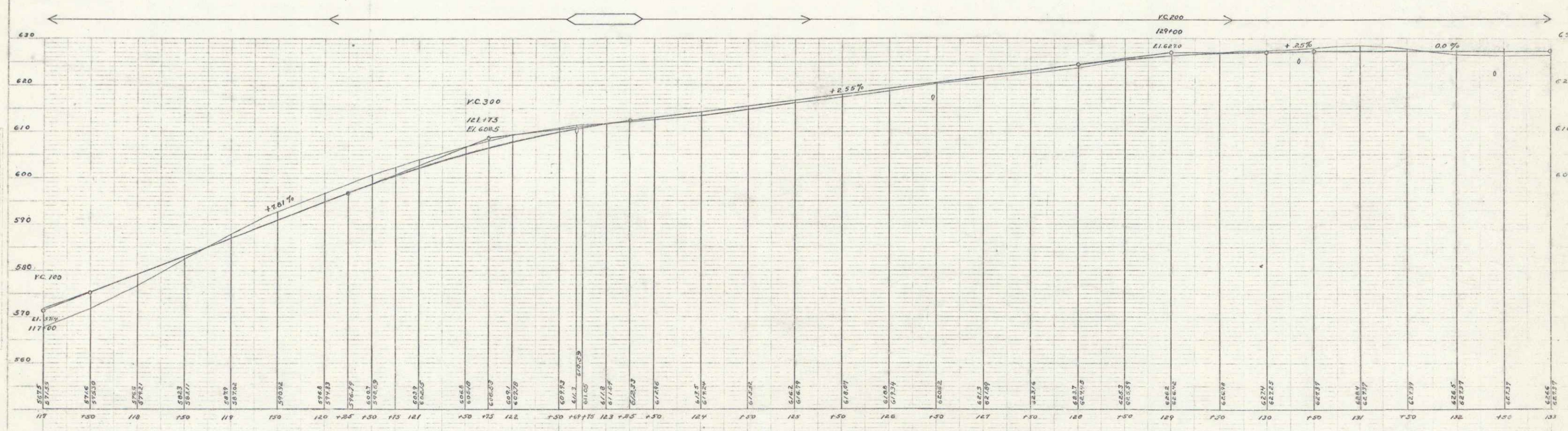
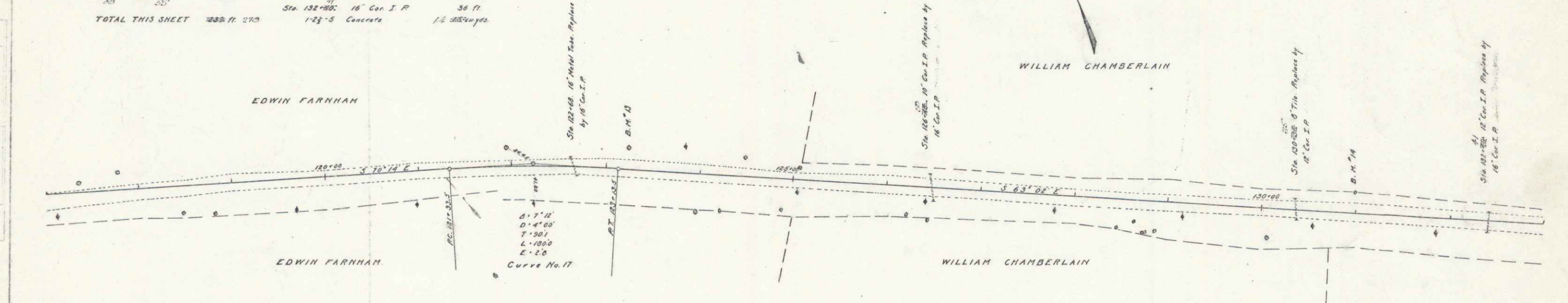


GUARD RAIL REQUIRED			NEW CULVERTS REQUIRED			SUB. BASE REQUIRED		
ON LEFT			Sta 122+00 to 122+20	16" Con. I. P.	20 ft.	Sta 122+00 to 122+20	1-2 1/2% Concrete	1.5 cu yds.
126+33	126+57	24	Sta 126+00 to 126+20	16" Con. I. P.	20 ft.	Sta 126+00 to 126+20	1-2 1/2% Concrete	1.5 cu yds.
130+25	130+49	24	Sta 130+00 to 130+20	16" Con. I. P.	20 ft.	Sta 130+00 to 130+20	1-2 1/2% Concrete	1.5 cu yds.
132+20	132+44	24	Sta 132+00 to 132+20	16" Con. I. P.	20 ft.	Sta 132+00 to 132+20	1-2 1/2% Concrete	1.5 cu yds.
ON RIGHT			Sta 122+50 to 122+70	16" Con. I. P.	20 ft.	Sta 122+50 to 122+70	1-2 1/2% Concrete	1.5 cu yds.
126+30	126+54	24	Sta 126+50 to 126+70	16" Con. I. P.	20 ft.	Sta 126+50 to 126+70	1-2 1/2% Concrete	1.5 cu yds.
130+25	130+49	24	Sta 130+50 to 130+70	16" Con. I. P.	20 ft.	Sta 130+50 to 130+70	1-2 1/2% Concrete	1.5 cu yds.
132+20	132+44	24	Sta 132+50 to 132+70	16" Con. I. P.	20 ft.	Sta 132+50 to 132+70	1-2 1/2% Concrete	1.5 cu yds.
TOTAL THIS SHEET			330 ft.	1-2 1/2% Concrete	1.5 cu yds.	330 ft.	1-2 1/2% Concrete	1.5 cu yds.

FEED ROAD	STA	FEED	STATE	YEAR	SHEET	TOTAL
3	VT	32	1047	11	63	



B.M.'s Nail in Elm Tree Left of Sta 123+22 Elev. 611.53
 B.M.'s Nail in Elm Tree Left of Sta 130+38 Elev. 622.13

14