

**GUARD RAIL REQUIRED ON LEFT**

Sta 103+56 to 103+88	Length 321 ft
103+56 to 103+61	24'
103+61 to 103+66	24'
103+66 to 103+71	24'
103+71 to 103+76	24'
103+76 to 103+81	24'
103+81 to 103+86	24'
103+86 to 103+91	24'
103+91 to 103+96	24'
103+96 to 104+01	24'

**ON RIGHT**

Sta 103+90 to 103+95	Length 55 ft
103+90 to 103+91	24'
103+91 to 103+92	24'
103+92 to 103+93	24'
103+93 to 103+94	24'
103+94 to 103+95	24'

**TOTAL THIS SHEET 280 ft 265**

**NEW CULVERTS REQUIRED**

Sta 107+29	16" Cor I.P.	28 ft
1-28-5	Concrete	15 cu yds.
Sta 115+05	2'-2" Concrete Culvert	6.5 cu yds.
1-2-4	Concrete	11.5 cu yds.
1-28-5		

**NEW CULVERTS REQUIRED**

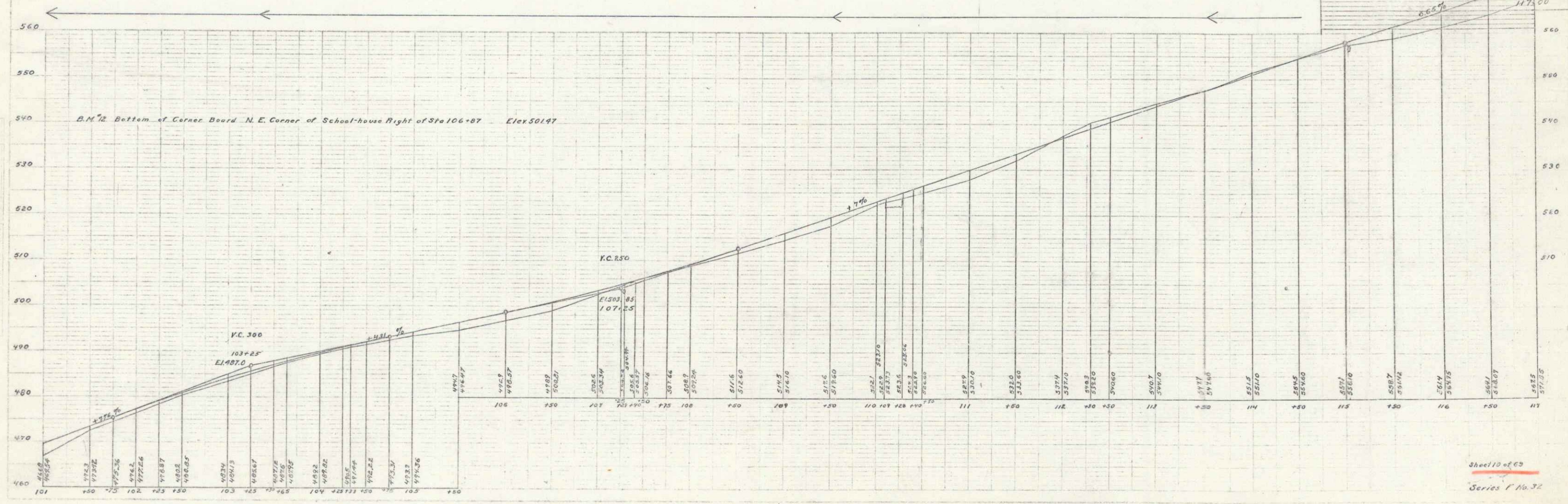
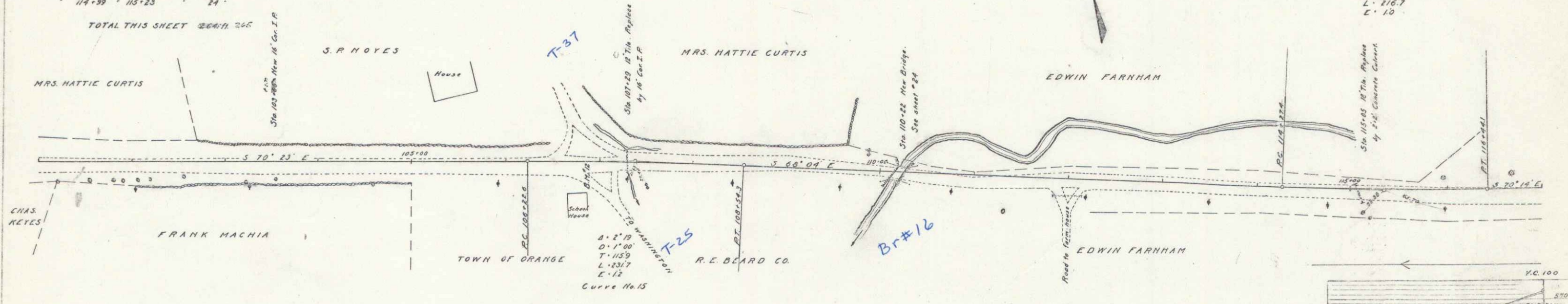
Sta 103+88 to 103+95	16" Cor I.P.	28 ft
1-28-5	Concrete	15 cu yds.

**SUB. BASE REQUIRED**

Sta 101+00 to 110+00	Length 2000 ft
Sta 110+00 to 114+00	Length 2000 ft
Total	4000 ft

FED. ROAD DIST. NO.	STATE	FED. ROAD DIST. NO.	YEAR	SPEED
5	V7	32	1927	10

Curve No. 16  
 R = 2' 10"  
 D = 1' 00"  
 T = 108.4  
 L = 216.7  
 E = 10



Sheet 10 of 10  
 Series F No. 32