

GUARD RAIL REQUIRED

ON LEFT

Sta. 85+00 to 87+00	Length 200 ft.	24
87+00 to 88+00	100 ft.	24
88+00 to 89+00	100 ft.	24
89+00 to 90+00	100 ft.	24
TOTAL THIS SHEET	600 ft.	24

ON RIGHT

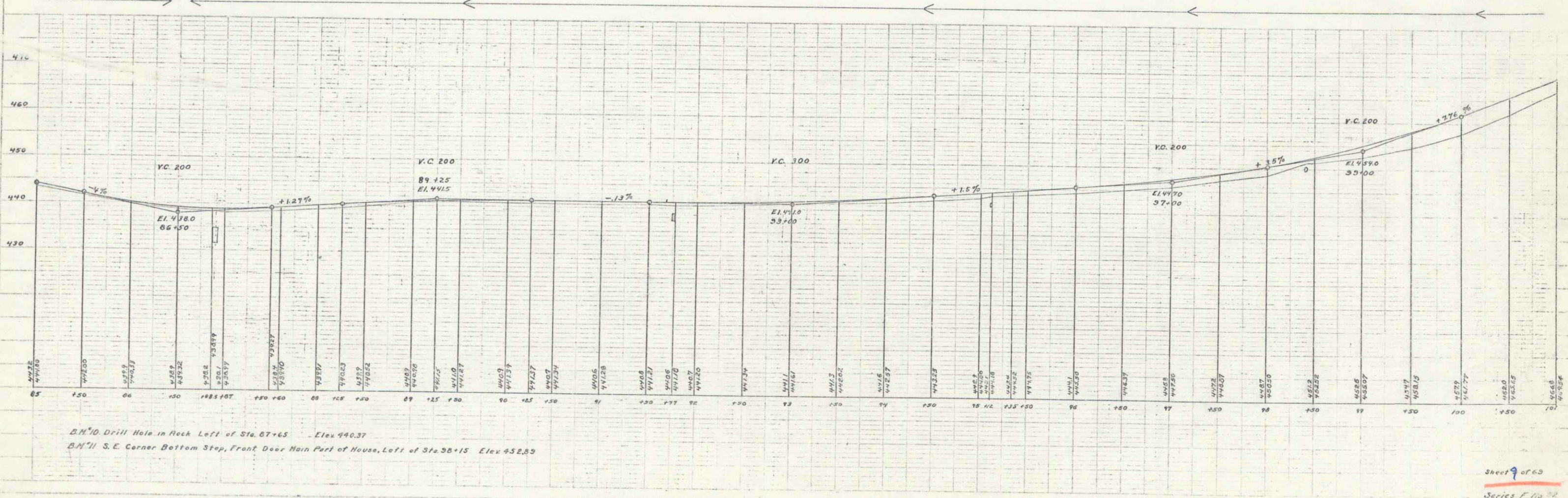
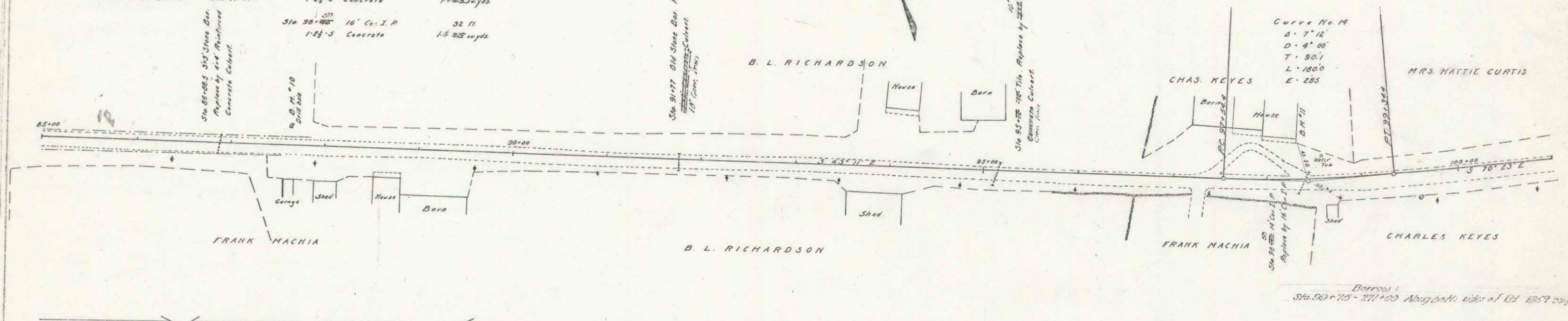
Sta. 85+00 to 87+00	Length 200 ft.	24
87+00 to 88+00	100 ft.	24
88+00 to 89+00	100 ft.	24
89+00 to 90+00	100 ft.	24
TOTAL THIS SHEET	600 ft.	24

NEW GULVERTS REQUIRED

Sta. 86+85	4'-4" Reinforced Concrete Culvert	26.78 cu yds.
	1-2-4 Concrete	10.00 cu yds.
	1-2-5 Concrete	1.27 cu yds.
	Reinforcing Steel	237 lbs.
Sta. 91+77	16" Cor. I. P.	28 ft.
	1-2-5 Concrete	1.42 cu yds.
Sta. 95+20	16" Cor. I. P.	32 ft.
	1-2-5 Concrete	1.68 cu yds.

Cracked Gravel Surface Course
Between Sta. 85+00 extending to
end of project.

FED. ROAD DIST. NO.	STATE	PROJECT NO.	YEAR	SHEET NO.	TOTAL SHEETS
3	VT	1027	1927	9	63



B.M. 10 Drill Hole in Rock Left of Sta. 87+65 Elev 440.37
B.M. 11 S.E. Corner Bottom Step, Front Door Main Part of House, Left of Sta. 90+15 Elev 452.89