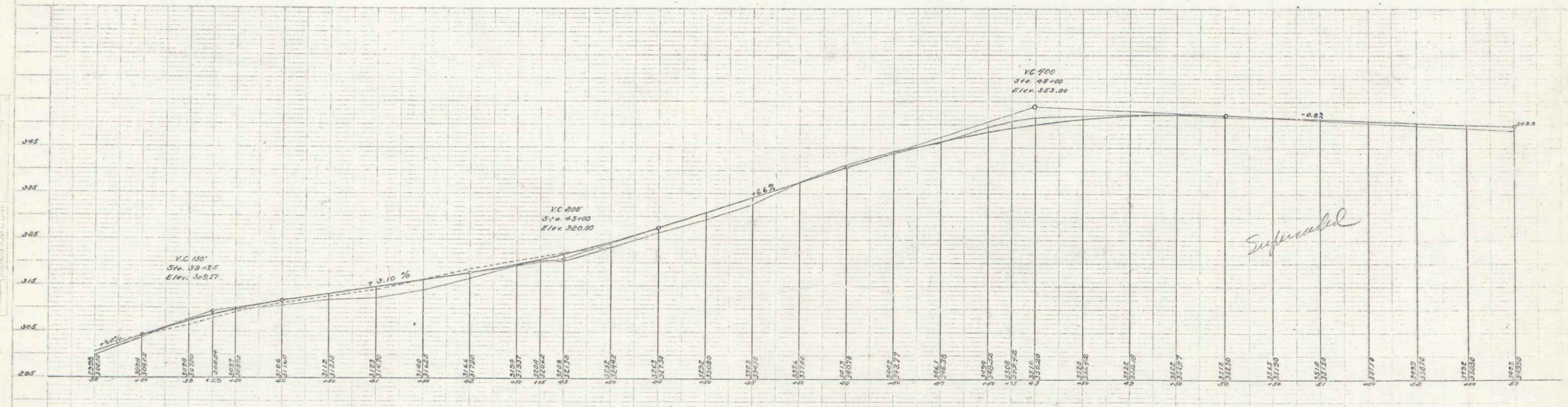
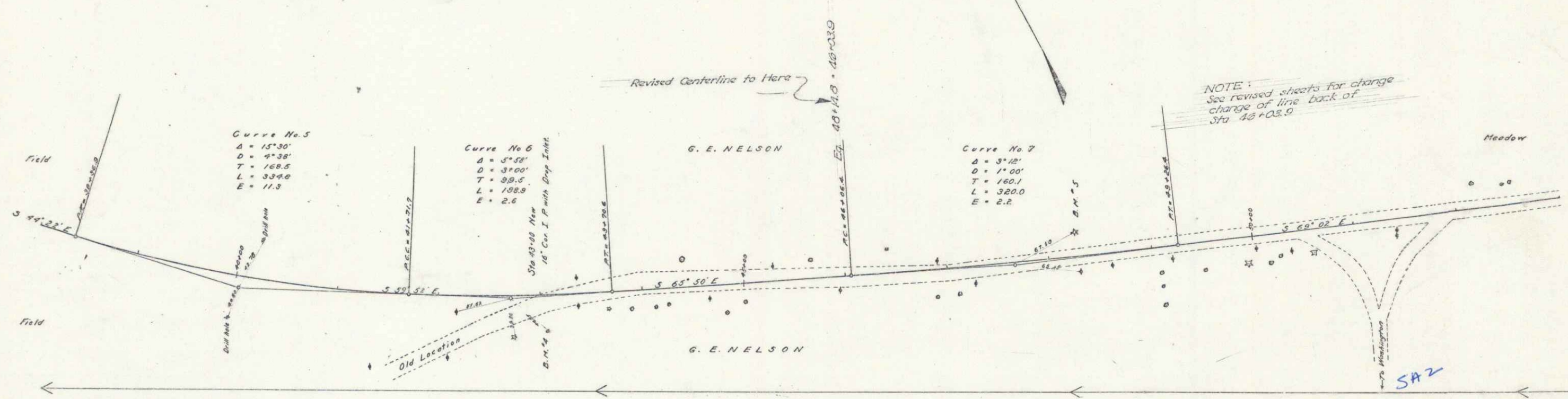


GUARD RAILS REQUIRED:
 ON LEFT: ~~Sta 48+00 to 48+25 Length 25'~~
 ON RIGHT: ~~Sta 48+00 to 48+25 Length 25'~~
 TOTAL THIS SHEET: 48.7'

NEW CURVERTS REQUIRED:
 Sta 48+00 to 48+10: ~~Drop 1.00' = 30.00'~~
 Sta 48+10 to 48+25: ~~Drop 1.00' = 30.00'~~
 Sta 48+25 to 48+30: ~~Drop 1.00' = 30.00'~~

Sub Base Required:
 Sta 48+00 to 48+30: ~~Length 30'~~

FED. ROAD DIST. NO.	STATE	FED. AID PROJ. NO.	STATE PROJ. NO.	SHEET NO.	TOTAL SHEETS
0	VT	1827	32	A	68



B.M. 4 Bent Spike in Elm Tree Right of Sta. 48+06 Elev. 324.66
 B.M. 3 Spike in Tamarack Tree Left of Sta. 48+25 Elev. 354.11

Sheet 6 of 68
 Series F No. 92