

**GUARD RAIL REQUIRED**  
**ON LEFT**  
 Sta. 25+23 to 26+55 Length 232 ft.  
 36+34 to 37+18 " 24 "

**ON RIGHT**  
 Sta. 27+73 to 27+97 Length 24 ft.  
 36+81 to 37+05 " 24 "

**TOTAL THIS SHEET 328 ft.**

**NEW CULVERTS REQUIRED**

Sta. 27+75 3'-5" Reinforced Concrete Culvert  
 1'-2" x 4" Concrete 6.0 cu yds.  
 1'-2" x 5" " 12.1 "  
 Reinforcing Steel 208 lbs.

Sta. 37+00 16" Con. I.P. with Drop Inlet  
 1'-2" x 5" Concrete 1.8 cu yds.

**SUB BASE REQUIRED**  
 Sta. 25+43 to 30+50 Length 394 ft.  
 37+00 to 38+00 " 500 "

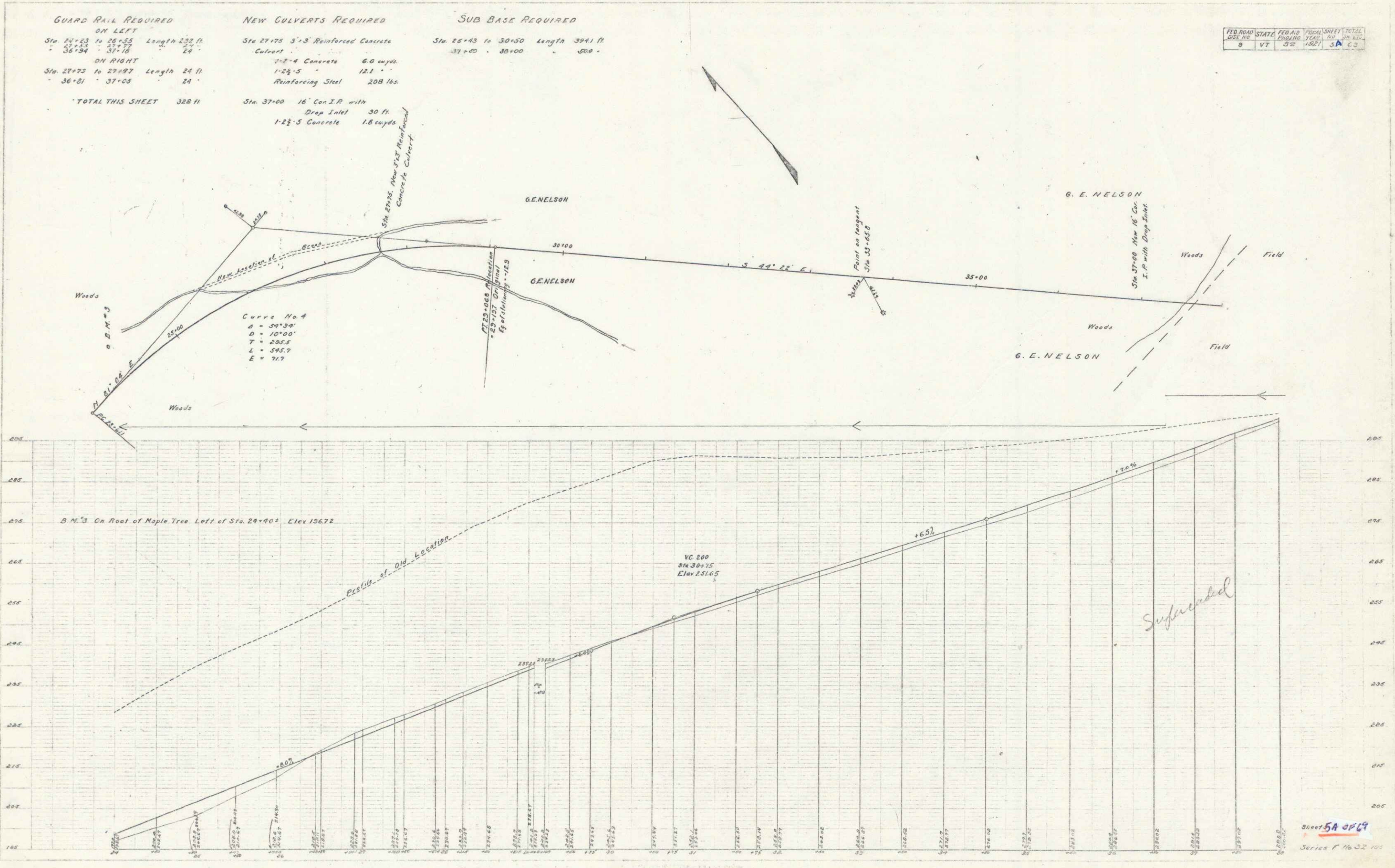
FED. ROAD DIST. NO.	STATE	FED. AID DIST. NO.	FISCAL YEAR	SHEET NO.	TOTAL SHEETS
9	VT	322	1927	3A	62

APPROVED  
 E. E. WELCH  
 SUPERVISOR

DESIGNED  
 E. E. WELCH  
 CIVIL ENGINEER

APPROVED  
 J. H. WELCH  
 CIVIL ENGINEER

DESIGNED  
 E. E. WELCH  
 CIVIL ENGINEER



Sheet 5A 004  
 Series F No 52 700