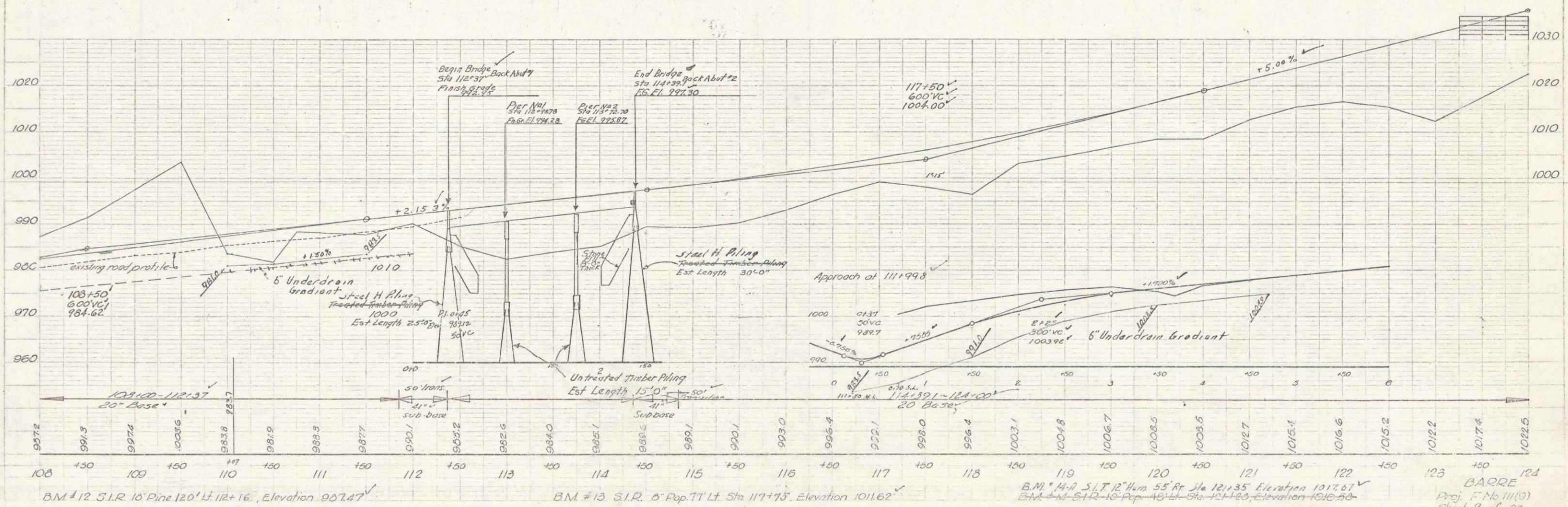


Typical section showing details of Approach at right of sta 111+99.8



B.M. #12 S.I.R. 16" Pine 120' Lt. 112+16, Elevation 997.47

B.M. #13 S.I.R. 6" Pop. 71' Lt. Sta. 117+15, Elevation 1011.62

B.M. #14 S.I.R. 12" Hem 55' Rt. Sta. 121+35, Elevation 1017.61
 B.M. #15 S.I.R. 18" Pop. 48' Lt. Sta. 121+20, Elevation 1010.50

BARRE
 Proj. E. No. 111(1)
 Sheet 7 of 27