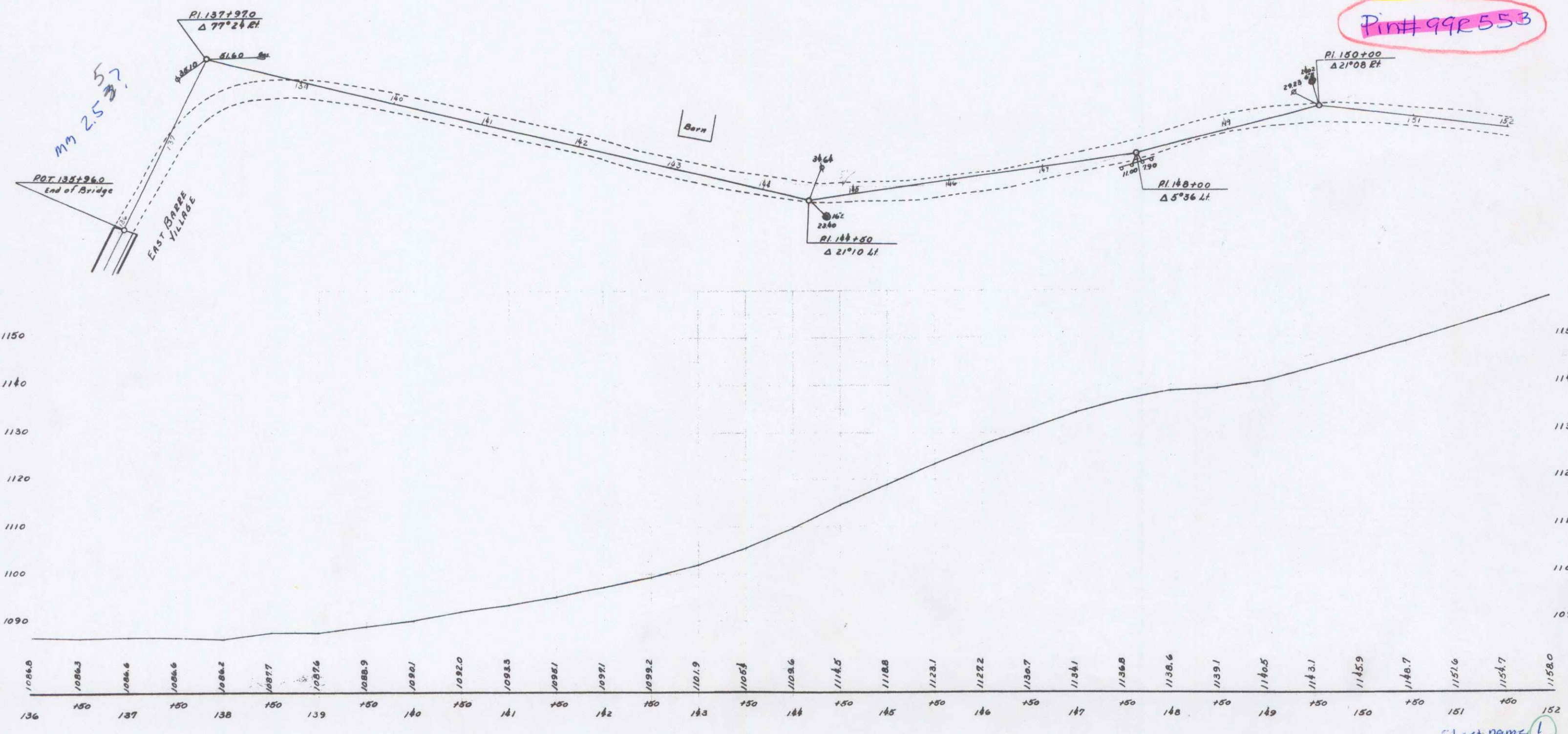


1/1/59

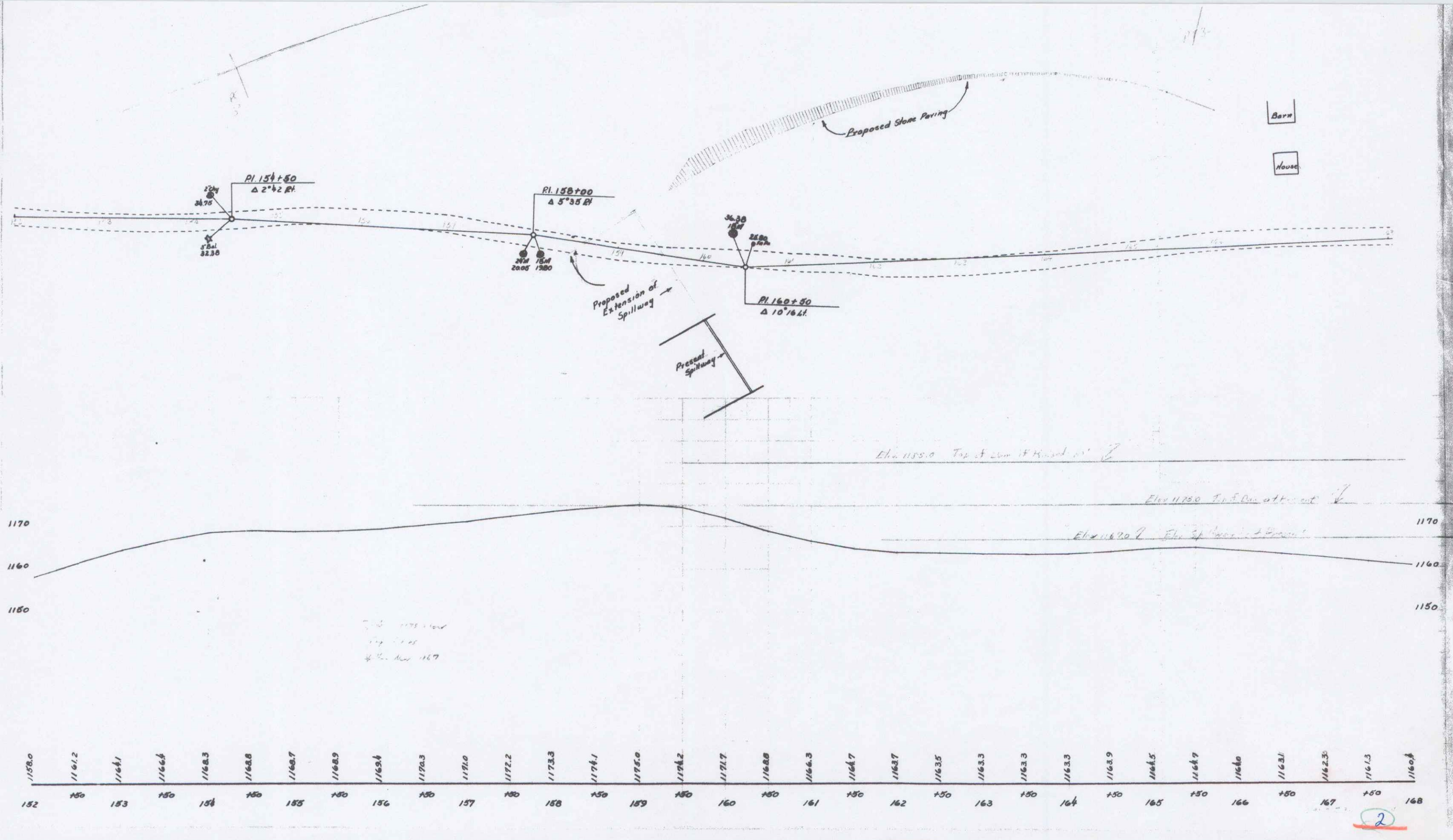
Town: Berre  
Route: US 302  
Project: mm 2.53 to 3.33  
Pin# 992553

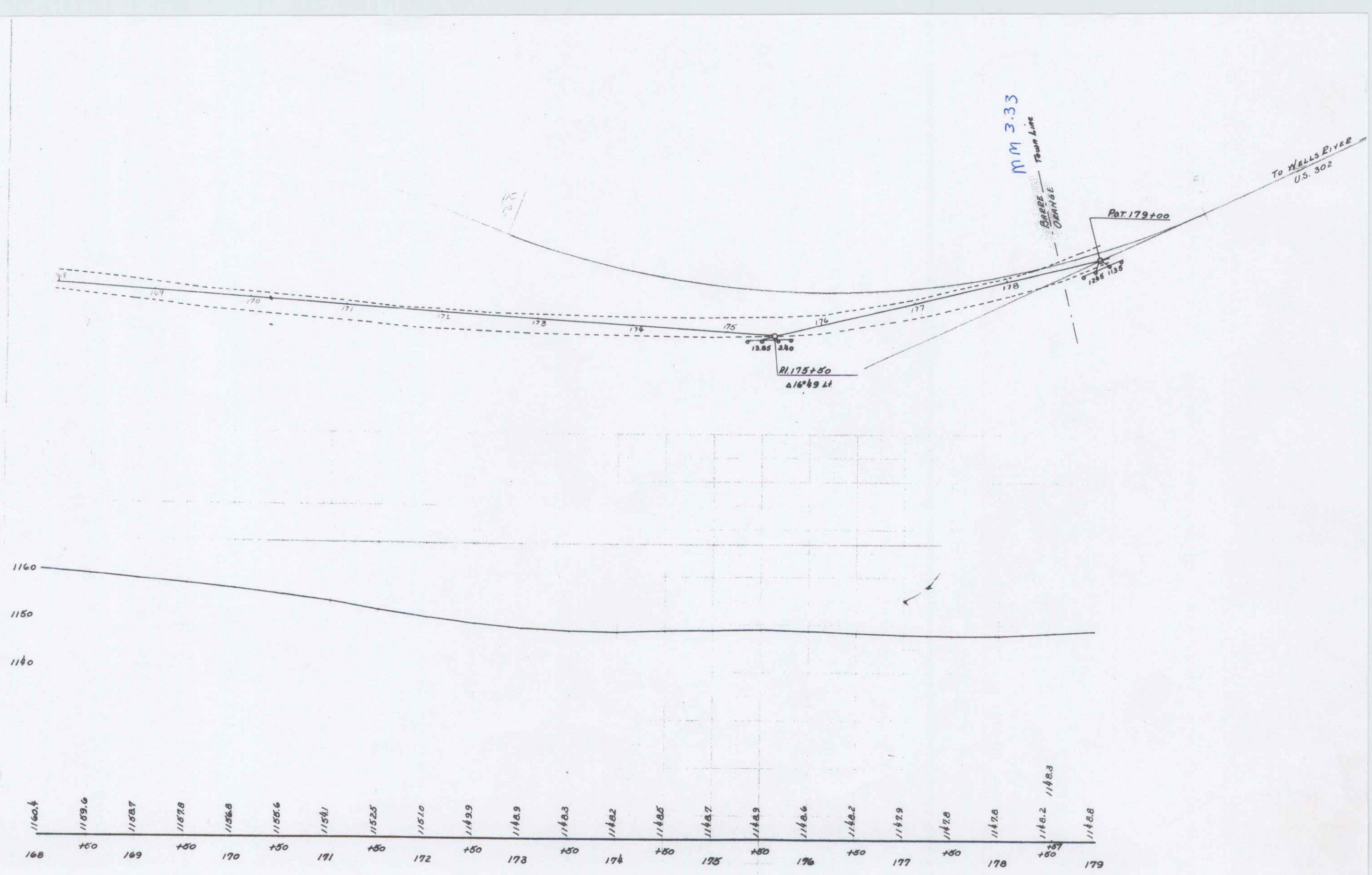


STEARNS R. JENKINS

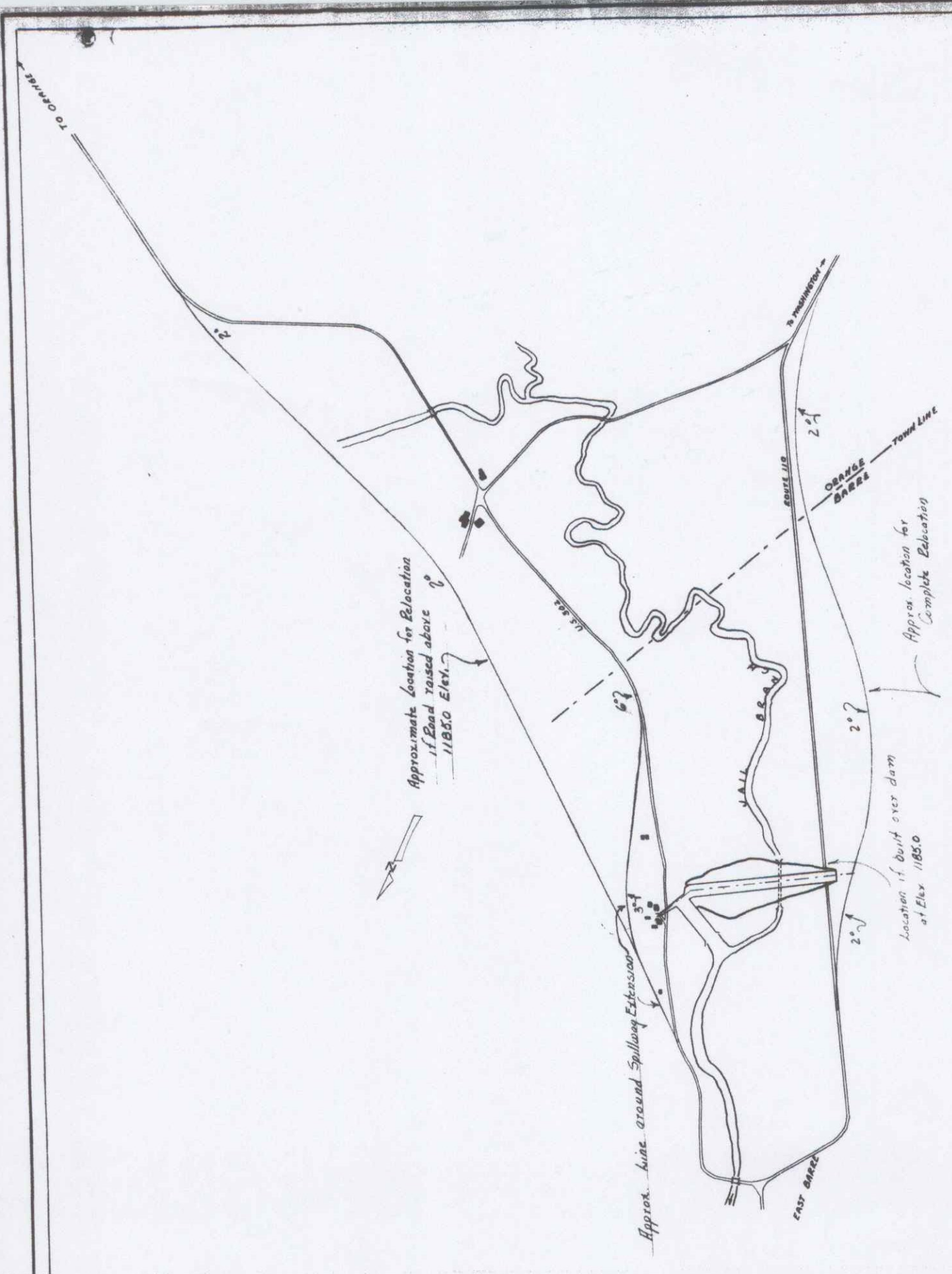
Sheet Name: 1  
US 302

FASTEN  
 HERE TO BE OPENED FOR  
 ON IF NECESSARY.  
 THE INSULATION

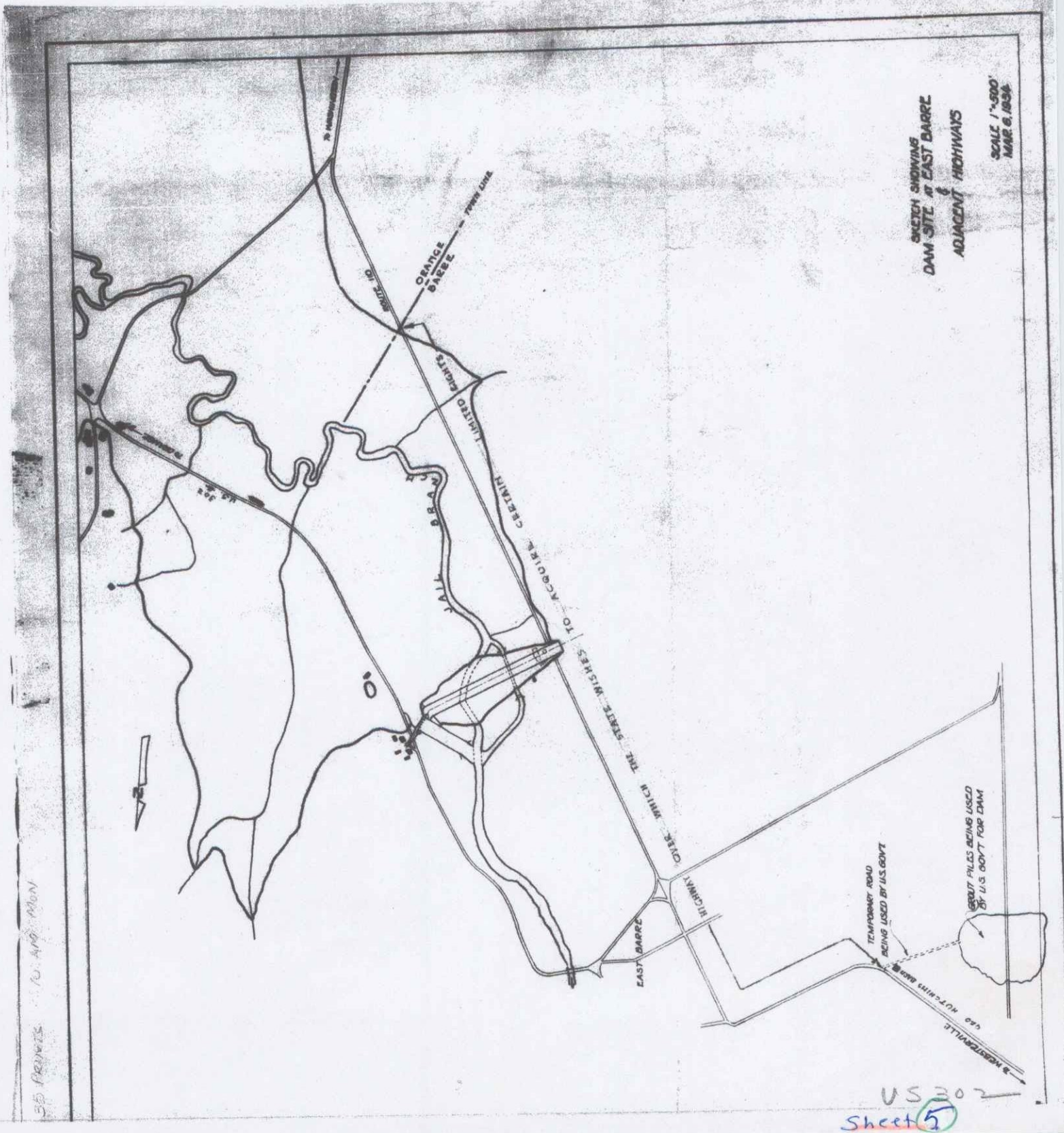








EAST-BARRE DAM  
 ROUTES U.S. 302 & 110  
 ADJACENT TO DAM  
 SCALE 1"=500'  
 MAR. 1, 1954



SITE SHOWING  
 DAM SITE AT EAST BARRE  
 ADJACENT HIGHWAYS  
 SCALE 1"=500'  
 MAR. 6, 1954

SEE PRINTS TO AND FROM

US 302  
 Sheet 5