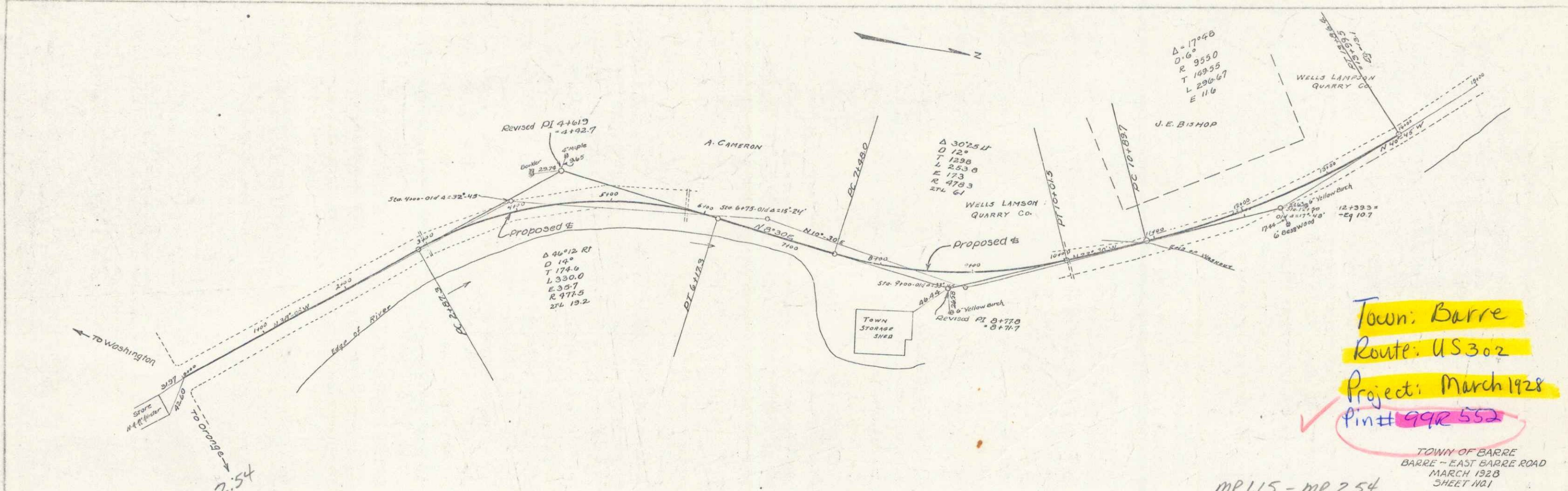
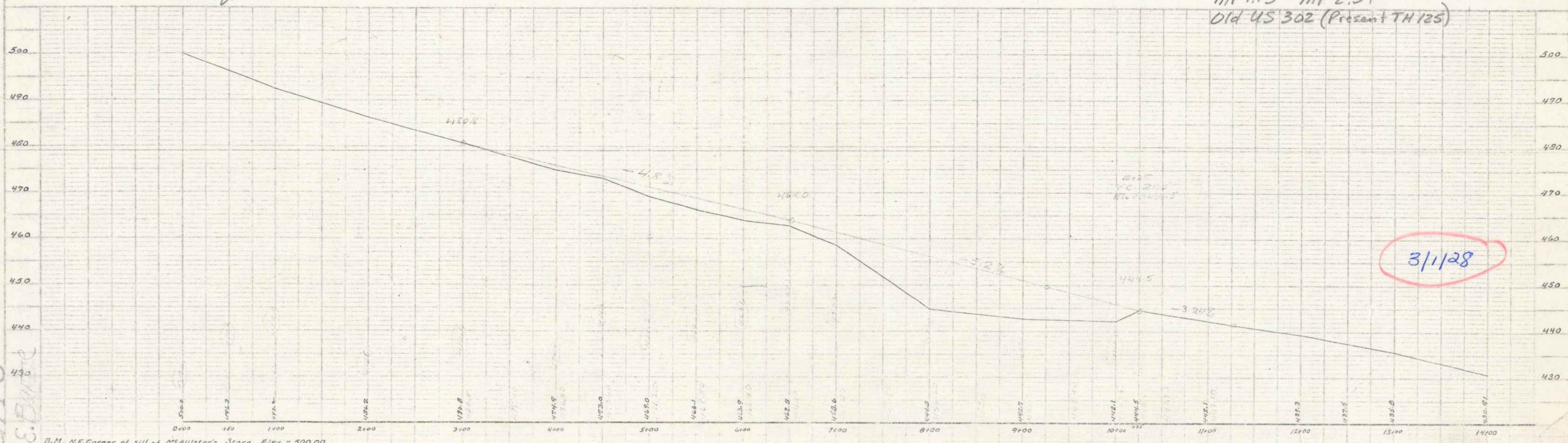


BP



Town: Barre  
 Route: US 302  
 Project: March 1928  
 Pin # 99R 552

TOWN OF BARRE  
 BARRE - EAST BARRE ROAD  
 MARCH 1928  
 SHEET NO. 1  
 MP 1.15 - MP 2.54  
 Old US 302 (Present TH 125)



3/1/28

Barre  
 B.C. Bird

D.M., NE Corner of sill of Ashlister's Stone. Elev = 300.00

Historical  
 STEARNS R. JENKINS  
 SHEET NO. 1  
 US 302