

INDEX OF SHEETS

SHEET NO.	TITLE PAGE	STAGE CONSTRUCTION
2	TYPICAL CROSS-SECTIONS OF IMPROVEMENT	ONE COURSE CEMENT CONCRETE PAVEMENT, TYPE B.
3	PLAN AND PROFILE STA. -3100-13100	
4	13100-27100	
5	27100-40100	
6	40100-52100	
7	52100-61100	
8	61100-76100	
9	76100-92100	
10	92100-107100	
11	107100-121100	
12	121100-133100	
13	133100-	
14	Series S.T.B. No. 35 (3 Spans) Square.	
15	S.B. No. 2 Typical Details.	
16	S.B. No. 5 Cable Rail.	
17	S.A.G. No. 10 Height T Beam with Piles.	
18	S.P. No. 1 Standard Pier with Piles - 13' high T Beam.	
19	STANDARD STRUCTURE SHEET, S-17.	
20	S-18.	
21	S-19.	
22-43	Cross Sections.	

STATE OF VERMONT
STATE HIGHWAY DEPARTMENT

PLAN AND PROFILE OF PROPOSED
STATE HIGHWAY

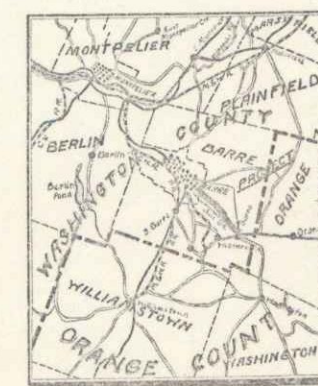
FLOOD RELIEF PROJECT

TOWN OF BARRE

Pin# 99R551

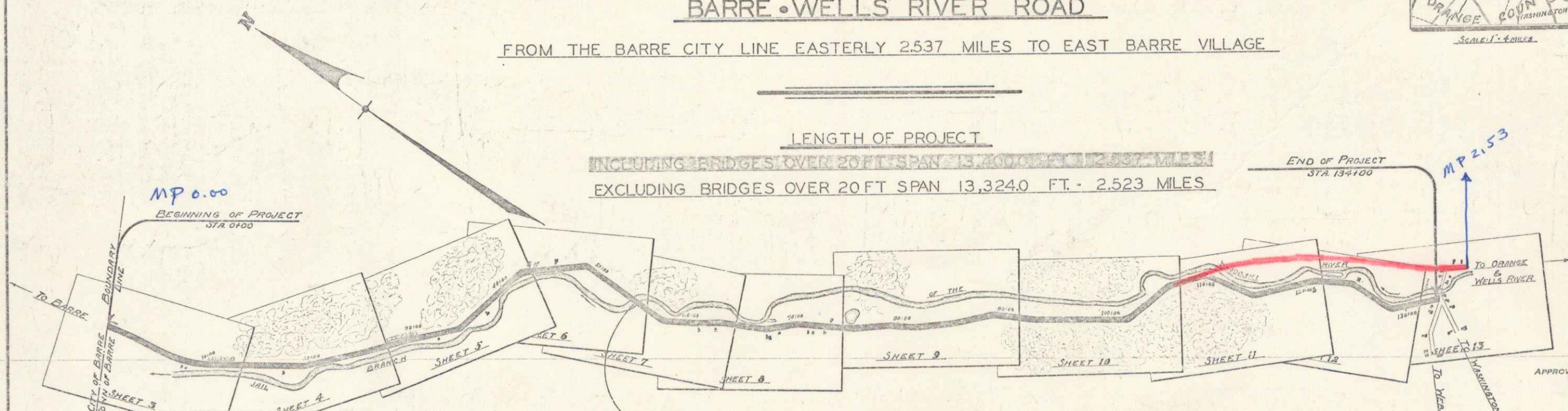
BARRE • WELLS RIVER ROAD

FROM THE BARRE CITY LINE EASTERLY 2.537 MILES TO EAST BARRE VILLAGE



LENGTH OF PROJECT

INCLUDING BRIDGES OVER 20 FT SPAN 13,324.0 FT. - 2.537 MILES
EXCLUDING BRIDGES OVER 20 FT SPAN 13,324.0 FT. - 2.523 MILES



DESCRIPTION	LENGTH	DATE
COUNTY LINE		
TOWN LINE		
FENCE LINE		
STONE WALL		
UNFENCED PI		
GUARD RAIL		
TRAVELED W/		
RAILROAD		
RETAINING W/		
CENTER LINE		
SURVEY LINE		
CULVERT		
DROP INLET		
TROLLEY POL		
POWER POLE		
TELEPHONE P		
TREES		
HEDGE		

BRIDGE
Sta. 35+30-36+09
See sheets 14-18 for details of construction

RECORD PLANS

Rte US 302

NOTE
Some construction work has been done on this project since the survey was made; therefore the earthwork quantities given are approximate only.

SCALES
PLAN: 3/32" = 1' HORIZ. 3/32" = 1' VERT.
PROFILE: 1/8" = 1' HORIZ. 1/8" = 1' VERT.
CROSS SECTIONS: 3/16" = 1' HORIZ.

NOTE
These plans subject to such revisions as may be required by the Bureau of Public Roads or the Chief Engineer.
This project to be constructed in accordance with standard specifications on file with the U.S. Bureau of Public Roads as approved July 7, 1926.

APPROVED: July 20, 1928
H. E. Langford
CHIEF ENGINEER
SUBMITTED BY ORDER OF THE STATE HIGHWAY BOARD
J. G. 1928
S. B. Bell
COMMISSIONER OF HIGHWAYS

RECOMMENDED
DISTRICT ENGINEER BUREAU OF PUBLIC ROADS
RECOMMENDED FOR APPROVAL
CHIEF ENGINEER BUREAU OF PUBLIC ROADS
APPROVED
DIRECTOR BUREAU OF PUBLIC ROADS

Project No. P.R. 40

SERIES F.R. No. 4-D FILED
SHEET 1 OF 3

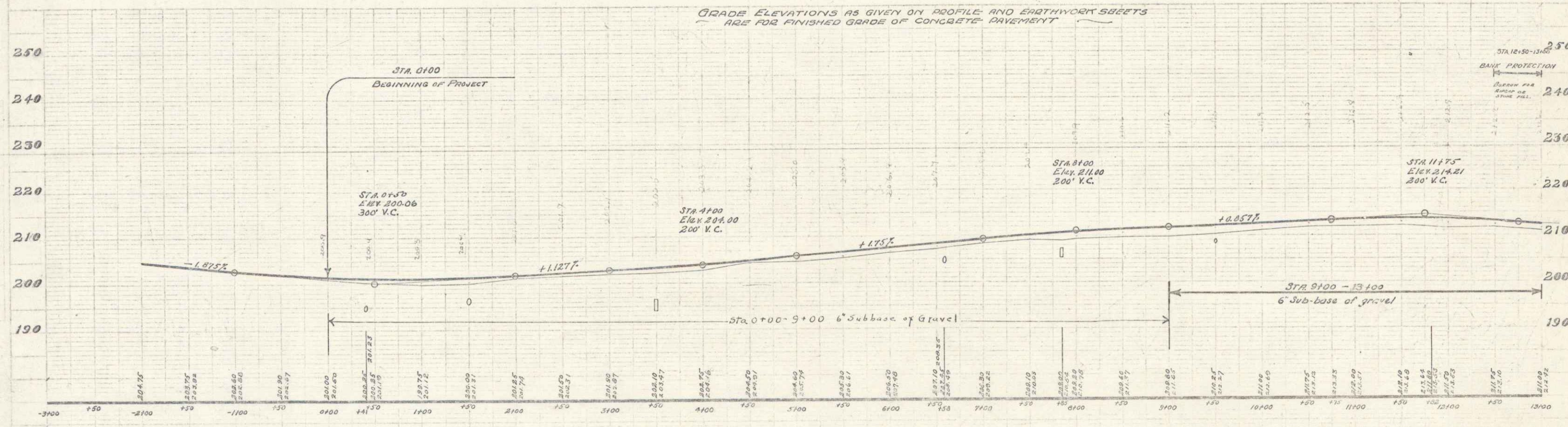
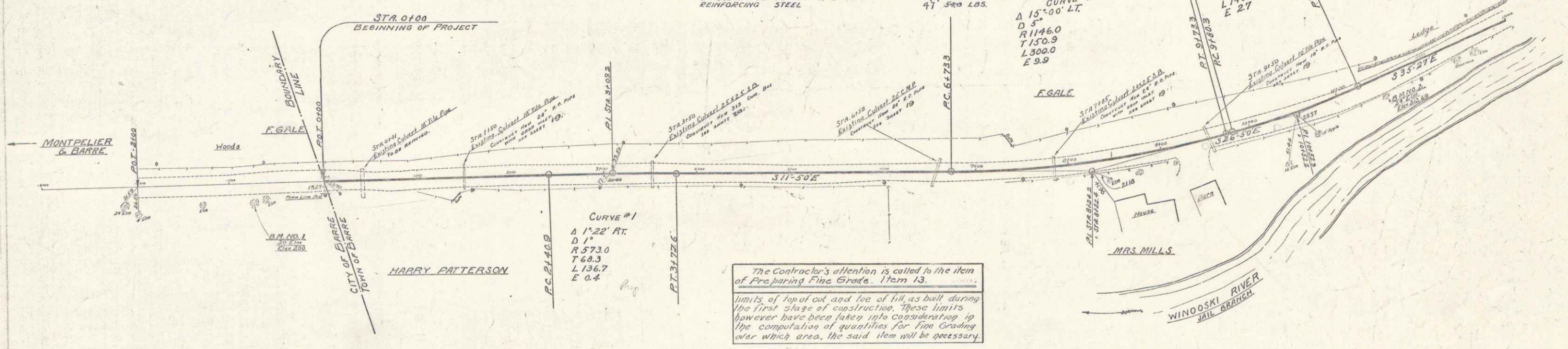
STEARNS R. JENKINS - US 302

CABLE GUARD RAIL REQUIRED
 ON RIGHT
 STA. 0+00 - 8+00 800 LINEAR FEET.
 STA. 12+00 - 13+00 100 LINEAR FEET.
 TOTAL FOR SHEET 900 LINEAR FEET.

WOOD GUARD RAIL REQUIRED
 ON LEFT
 1+38 - 1+62 24 LINEAR FEET.
 3+38 - 3+62 24 LINEAR FEET.
 6+48 - 6+72 24 LINEAR FEET.
 7+73 - 7+97 24 LINEAR FEET.
 8+38 - 9+62 24 LINEAR FEET.
 ON RIGHT
 9+38 - 9+62 24 LINEAR FEET.
 TOTAL FOR SHEET 144 LINEAR FEET.

NEW CULVERTS REQUIRED
 STA. 1+50 24" REINFORCED CONCRETE PIPE LENGTH 32 FT. WITH DI. CONCRETE CLASS A (1-2-4) 5.33 CU YDS. REINFORCING STEEL 134.23 LBS.
 STA. 3+50 4x2 3/4" CONCRETE BOX CONCRETE CLASS A (1-2-4) 22.4189 CU YDS. REINFORCING STEEL 1175.7249 LBS.
 STA. 6+58 24" REINFORCED CONCRETE PIPE LENGTH 32 FT. CONCRETE CLASS A (1-2-4) 3.6388 CU YDS. REINFORCING STEEL 59.8480 LBS.
 STA. 7+85 24" REINFORCED CONCRETE PIPE LENGTH 32.0 FT. CONCRETE CLASS A (1-2-4) 3.1300 CU YDS. REINFORCING STEEL 57.1880 LBS.
 STA. 9+58 18" REINFORCED CONCRETE PIPE LENGTH 32.0 FT. CONCRETE CLASS A (1-2-4) 1.1723 CU YDS. REINFORCING STEEL 41.5400 LBS.

REVISIONS
 1. 11/15/28
 2. 11/15/28
 3. 11/15/28
 4. 11/15/28
 5. 11/15/28
 6. 11/15/28
 7. 11/15/28
 8. 11/15/28
 9. 11/15/28
 10. 11/15/28
 11. 11/15/28
 12. 11/15/28
 13. 11/15/28
 14. 11/15/28
 15. 11/15/28
 16. 11/15/28
 17. 11/15/28
 18. 11/15/28
 19. 11/15/28
 20. 11/15/28
 21. 11/15/28
 22. 11/15/28
 23. 11/15/28
 24. 11/15/28
 25. 11/15/28
 26. 11/15/28
 27. 11/15/28
 28. 11/15/28
 29. 11/15/28
 30. 11/15/28
 31. 11/15/28
 32. 11/15/28
 33. 11/15/28
 34. 11/15/28
 35. 11/15/28
 36. 11/15/28
 37. 11/15/28
 38. 11/15/28
 39. 11/15/28
 40. 11/15/28
 41. 11/15/28
 42. 11/15/28
 43. 11/15/28
 44. 11/15/28
 45. 11/15/28
 46. 11/15/28
 47. 11/15/28
 48. 11/15/28
 49. 11/15/28
 50. 11/15/28
 51. 11/15/28
 52. 11/15/28
 53. 11/15/28
 54. 11/15/28
 55. 11/15/28
 56. 11/15/28
 57. 11/15/28
 58. 11/15/28
 59. 11/15/28
 60. 11/15/28
 61. 11/15/28
 62. 11/15/28
 63. 11/15/28
 64. 11/15/28
 65. 11/15/28
 66. 11/15/28
 67. 11/15/28
 68. 11/15/28
 69. 11/15/28
 70. 11/15/28
 71. 11/15/28
 72. 11/15/28
 73. 11/15/28
 74. 11/15/28
 75. 11/15/28
 76. 11/15/28
 77. 11/15/28
 78. 11/15/28
 79. 11/15/28
 80. 11/15/28
 81. 11/15/28
 82. 11/15/28
 83. 11/15/28
 84. 11/15/28
 85. 11/15/28
 86. 11/15/28
 87. 11/15/28
 88. 11/15/28
 89. 11/15/28
 90. 11/15/28
 91. 11/15/28
 92. 11/15/28
 93. 11/15/28
 94. 11/15/28
 95. 11/15/28
 96. 11/15/28
 97. 11/15/28
 98. 11/15/28
 99. 11/15/28
 100. 11/15/28



B.M. #1 Spike in trunk of 20 Elm, 17' RI Sta-1126. Elev. 200.00
 B.M. #2 24 11148 212.69

SERIES FR. No. 10
 SHEET 3 OF 43

NEW CULVERTS REQUIRED

Sta 15123 24" Reinf. Conc. Pipe Length 32 ft.
Concrete Class A (1-2-4) 33 cu yds. 4.5
Reinf. steel 123 lbs. 4.1

Sta 21452 24" Reinf. Conc. Pipe Length 36 ft.
Concrete Class A (1-2-4) 38 cu yds. 4.1
Reinf. steel 138 lbs. 3.1

Sta 22128 18" Reinf. Conc. Pipe Length 32 ft.
Concrete Class B (1-2-4) 31 cu yds. 3.1
Reinf. steel 112 lbs. 3.1

Sta 26154 18" Reinf. Conc. Pipe Length 32 ft.
Concrete Class B (1-2-4) 31 cu yds. 3.4
Reinf. steel 112 lbs. 3.1

CABLE GUARD RAIL REQUIRED
RIGHT

Sta 13100-16140 Length 340 ft.
22106-26170 364
TOTAL FOR RIGHT 704 FT.

WOOD GUARD RAIL REQUIRED
LEFT

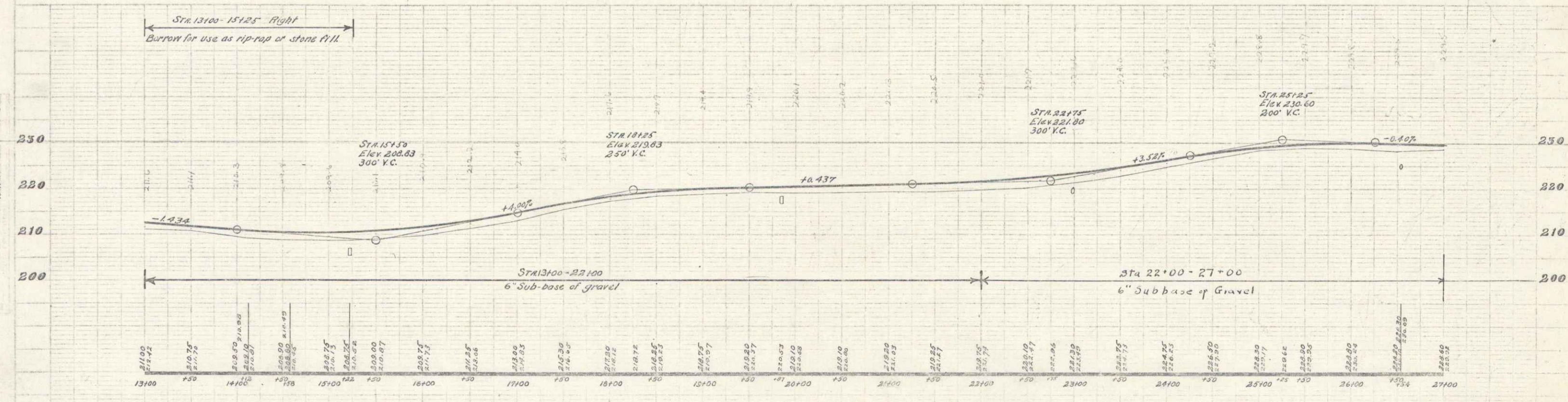
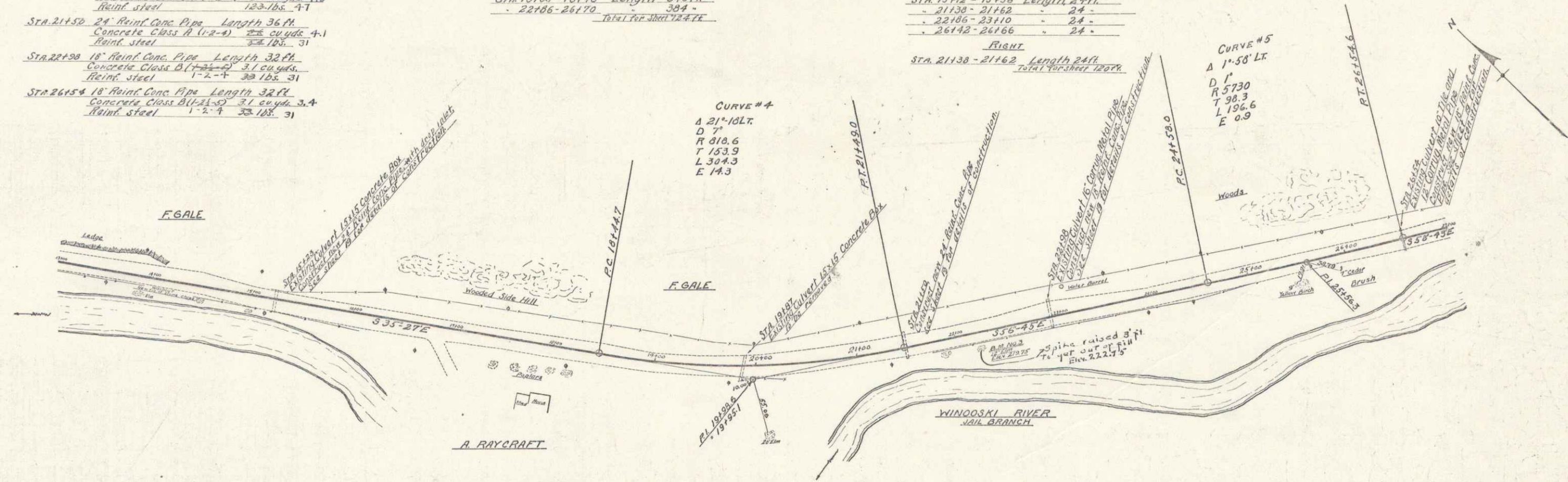
Sta 15112-15136 Length 24 ft.
21138-21162 24
22106-23110 24
26142-26166 24

RIGHT

Sta 21138-21162 Length 24 ft.
TOTAL FOR RIGHT 72 FT.

CURVE #4
Δ 21° 18' LT.
D 7'
R 810.6
T 153.9
L 304.3
E 14.3

CURVE #5
Δ 1° 58' LT.
D 1'
R 5730
T 98.3
L 196.6
E 0.9



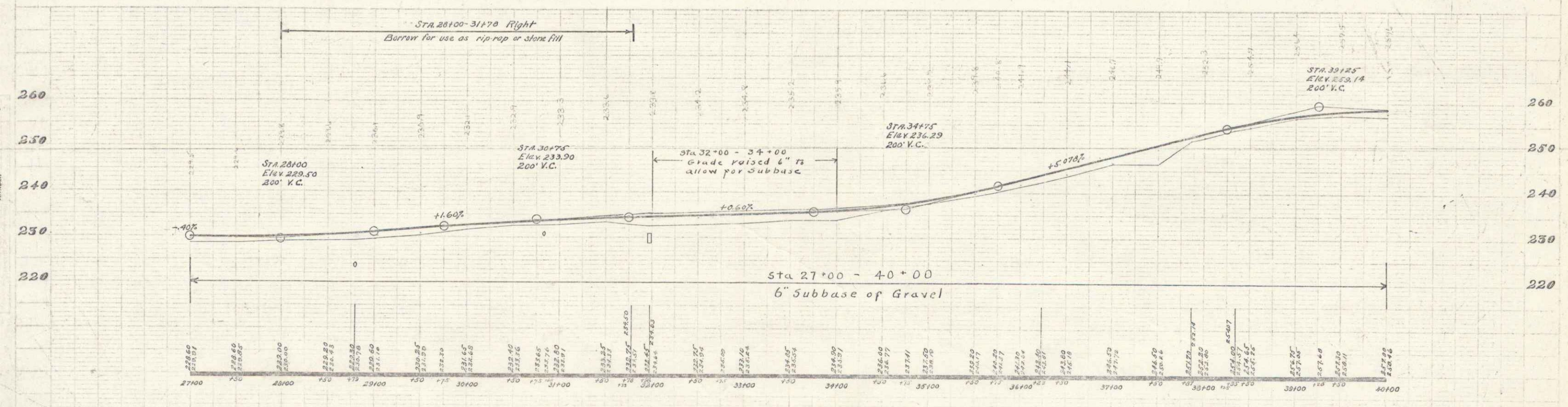
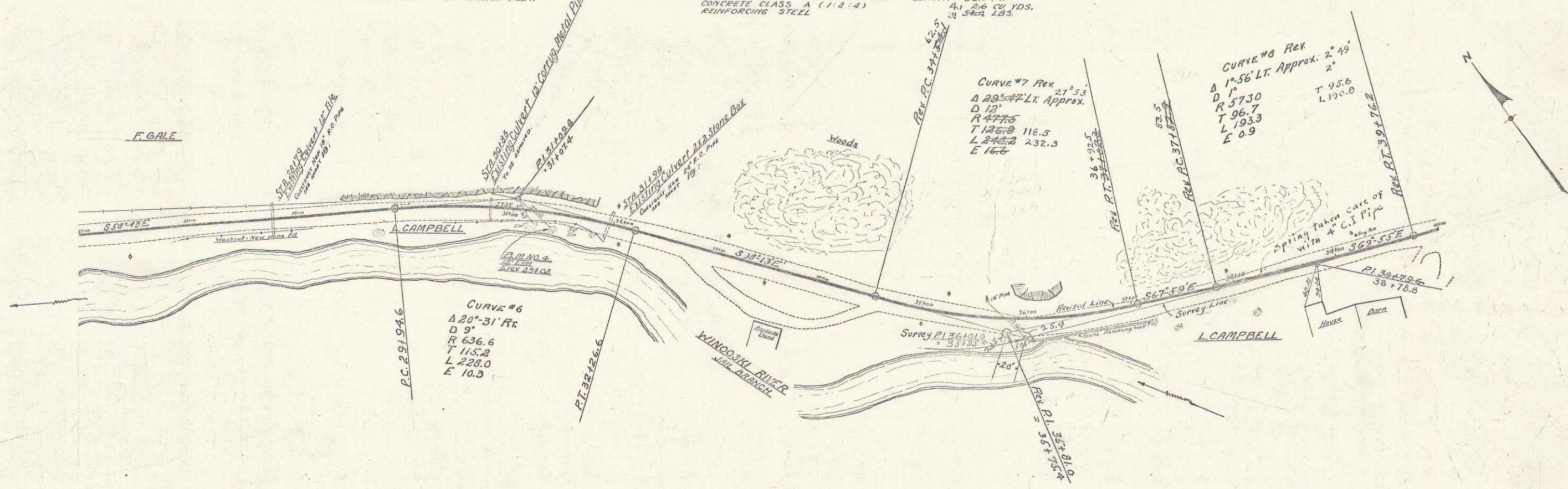
B.M. #3 Spike in trunk 12' Elm, 13' Rt Sta. 22124. Elev. 219.75

CABLE GUARD RAIL REQUIRED ON RIGHT
 STA 27+00 - 32+76 450 LINEAR FEET
 STA 33+00 - 37+50 400 LINEAR FEET
 TOTAL FOR SHEET 850 LINEAR FEET

WOOD GUARD RAIL REQUIRED ON LEFT
 STA 29+07 - 29+91 84 LINEAR FEET
 STA 31+00 - 32+10 110 LINEAR FEET
 TOTAL FOR SHEET 194 LINEAR FEET

NEW CULVERTS REQUIRED
 STA 29+70 18" REINFORCED CONCRETE PIPE LENGTH 40.0 FT with D.I.
 CONCRETE CLASS A (1:2:4) 40 TON CU YDS.
 REINFORCING STEEL 191.5+0 LBS.
 STA 31+00 24" REINFORCED CONCRETE PIPE LENGTH 32.0 FT
 CONCRETE CLASS A (1:2:4) 41.34 CU YDS.
 REINFORCING STEEL 342.1 LBS.

FRAD 1928 5-43



B.M. #4 Spike in trunk 10' slippery Elm 12.5' Pt. Sta 31+42. Elev 234.02

SERIES FR No. 10
 SHEET 5 OF 15

NEW CULVERTS REQUIRED
 STA 49138 18" Reinf. Conc. Pipe Length 36 ft.
 Concrete class (1-2-4) 33 lbs. 31
 Reinf. steel 1-2-4 33 lbs. 31
 STA 43177 18" Reinf. Conc. Pipe Length 44 ft.
 Concrete class (1-2-4) 31 cu. yds. 4.7
 Reinf. steel 1-2-4 33 lbs. 31

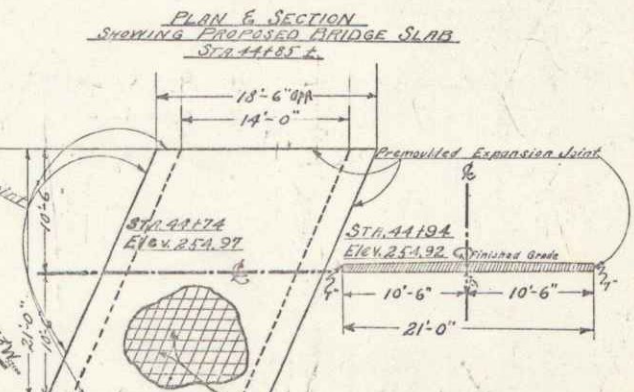
CRACK GUARD FLOW REQUIRED
RIGHT
 STA 40168-41172 Length 104 ft.
 42168-41174 270
 41190-41170 280
 Total for sheet 556 ft.

Sta 44185±
 Reinforced Concrete Slab Bridge, Span 14'-0" (Face to face of abutments)
 Roadway width 21'-0" between rails.
 State Aid construction in 1922.
 Condition good, to be retained.

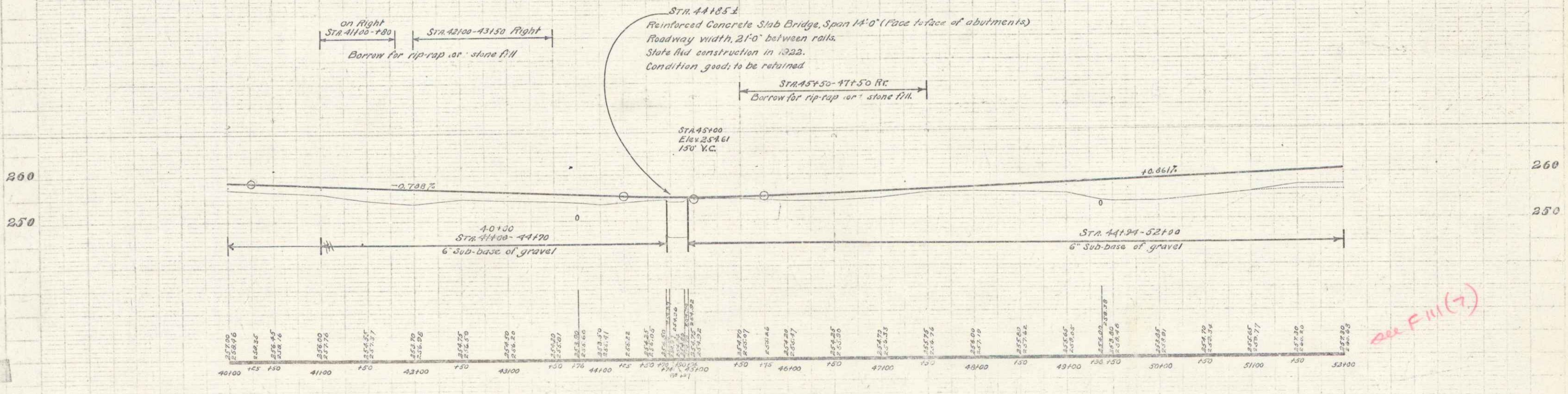
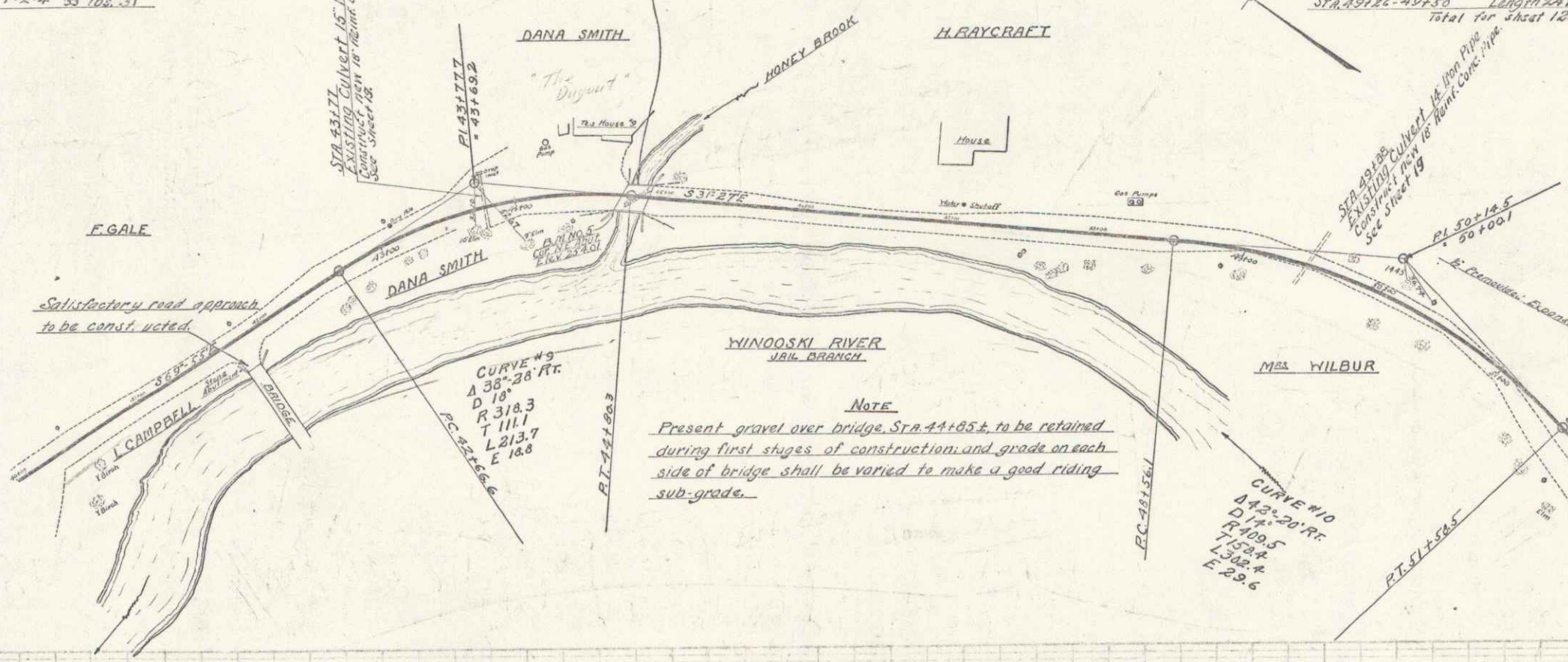
WOOD GUARD FLOW REQUIRED
LEFT
 STA 43164-43188 Length 24 ft.
 44152-44176 24
 44194-45118 24
 43126-43150 24
 STA 49126-49150 Length 24 ft.
 Total for sheet 120 ft.

TO BE INCLUDED IN 2ND STAGE OF CONSTRUCTION

PAVEMENT
BRIDGE AT Sta. 44185±
 One course cement concrete pavement Type A, including steel reinforcement. Floor of present bridge to be thoroughly cleaned before construction of pavement. Expansion joints to be placed at the beginning and end of slab.



REINFORCING STEEL
 In addition to steel reinforcing mat 1/2" x 6" deformed bars, 6" c/c, placed 2 1/2" below top of mat.



B.M. #3 Cor. N.E. abutment of Honey Brook Bridge, Sta. 44168, Elev. 254.01

see F. 111 (7)

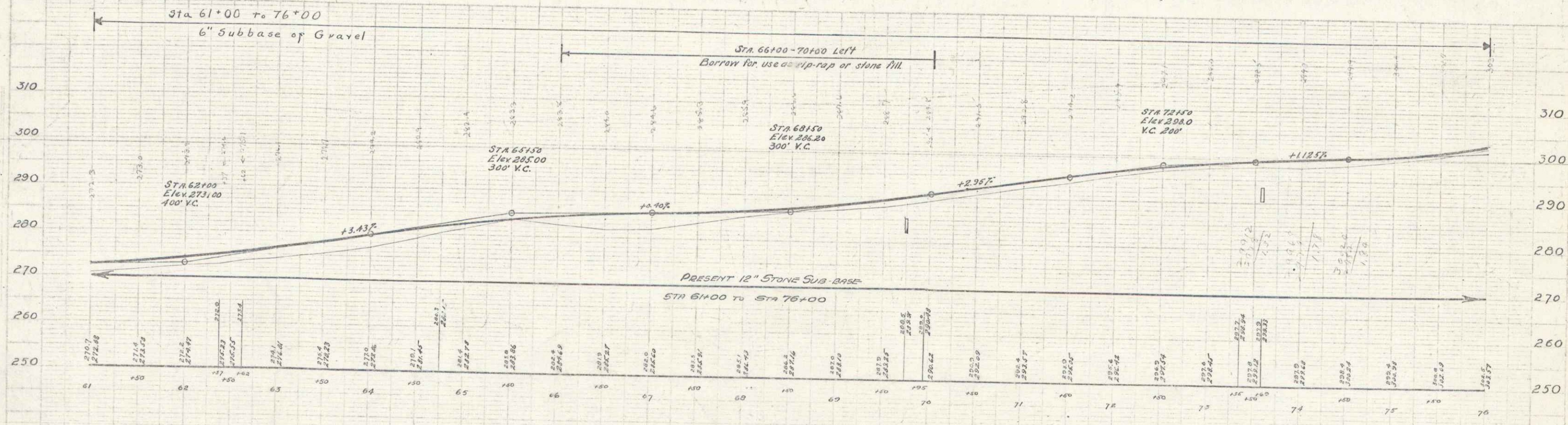
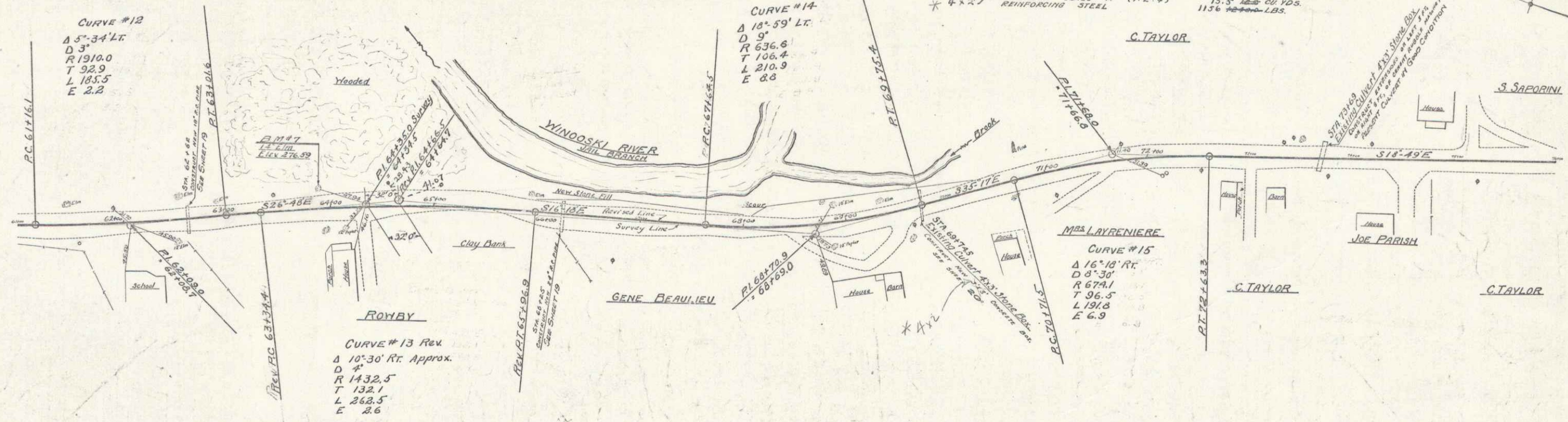
CABLE GUARD RAIL REQUIRED
 ON LEFT
 STA 64+30 - 65+34 44 LINEAR FEET
 65+76 - 71+29 352 LINEAR FEET
 73+40 - 74+38 96 LINEAR FEET
 ON RIGHT
 73+40 - 74+38 96 LINEAR FEET
 61+00 - 61+60 60 LINEAR FEET

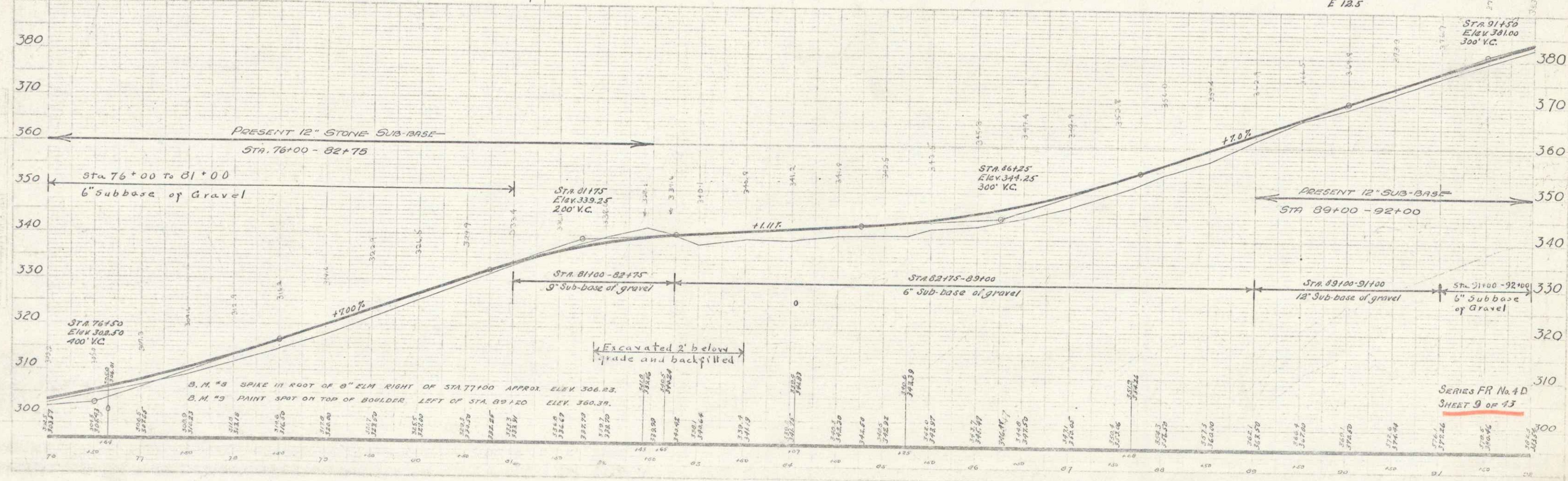
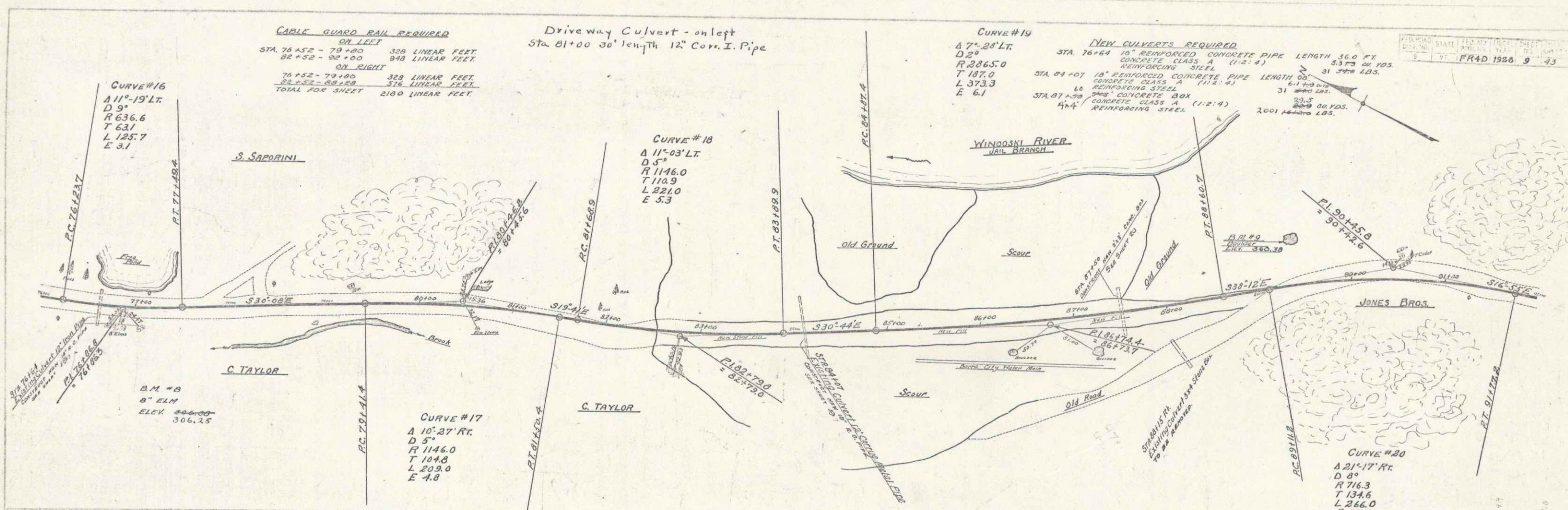
WOOD GUARD RAIL REQUIRED
 ON RIGHT
 STA 62+50 - 62+74 24 LINEAR FEET
 63+13 - 63+37 24 LINEAR FEET
 69+63 - 69+87 24 LINEAR FEET
 TOTAL FOR SHEET 72 LINEAR FEET

NEW CULVERTS REQUIRED
 STA 62+62 18" REINFORCED CONCRETE PIPE LENGTH 36.0 FT. CONCRETE CLASS A (1:2:4) 4.3 YDS. 25,105 LBS.
 STA 66+23 24" REINFORCED CONCRETE PIPE LENGTH 36.0 FT. CONCRETE CLASS A (1:2:4) 6.1 YDS. 31,105 LBS.
 STA 69+75 30" CONCRETE BOX CONCRETE CLASS A (1:2:4) 11.5 YDS. 117,600 LBS.
 4"x4" REINFORCING STEEL 1176 LBS.

CULVERT REPAIRS REQUIRED
 STA 73+69 24" STAKE BOX CEMENT-FULL MASS CONCRETE 10.9 YDS.

FR-41988 8 13





NEW CULVERTS REQUIRED + A Replacement
 STA 92+32 15" Rein. Conc. Pipe Length 36 ft
 Concrete Class B (1500-5) Sp. 40 yds. 7.1
 Reinf. Steel - #1 @ 18" 1-2-4

CULVERT REPAIRS REQUIRED
 STA 94+00 Extensions of current rubble masonry length to be determined by the engineer
 Concrete rubble required, 20 cu yds. 4-0.7
 STA 10+125 Cement rubble masonry extension on left length 55 ft
 Concrete rubble required, 20 cu yds. 6.7

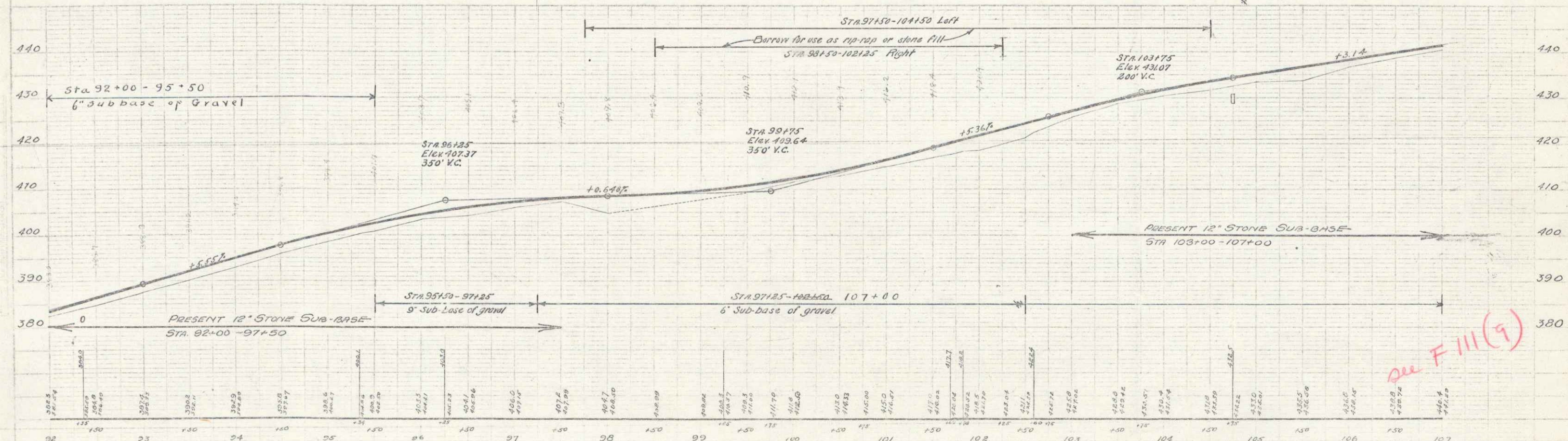
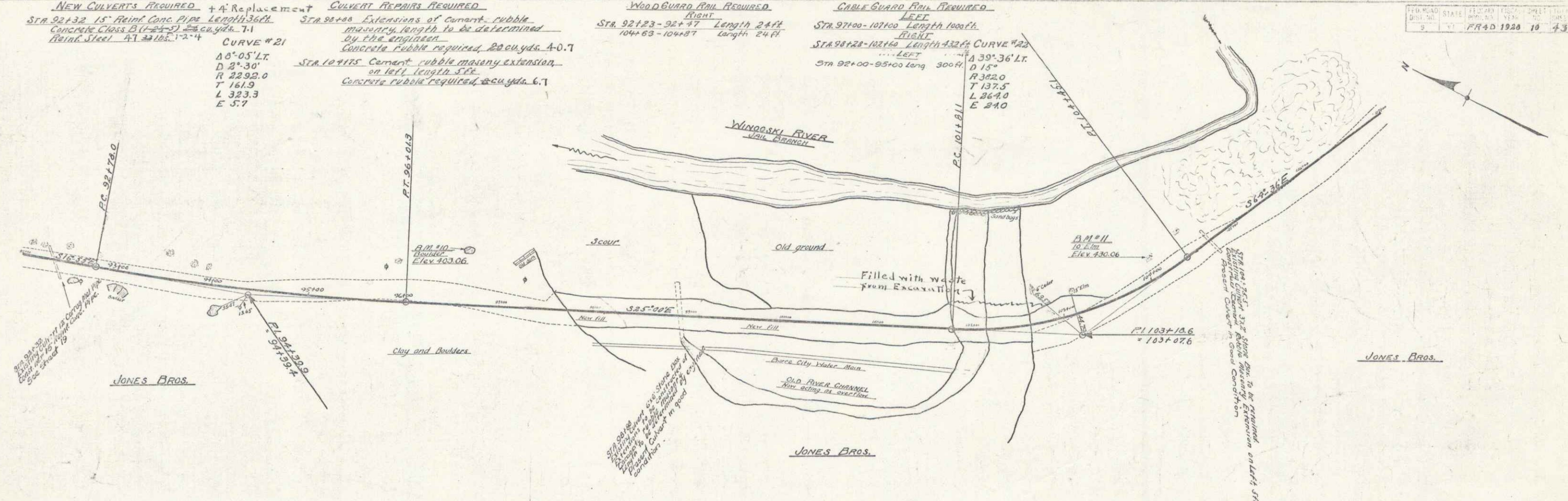
CURVE #21
 Δ 0° 05' LT
 D 27.30'
 R 2292.0
 T 161.9
 L 323.3
 E 5.7

WOOD GUARD RAIL REQUIRED
 RIGHT
 STA 92+23-92+37 Length 24 ft
 104+63-104+87 Length 24 ft

CABLE GUARD RAIL REQUIRED
 LEFT
 STA 92+00-101+00 Length 100 ft
 RIGHT
 STA 98+22-102+00 Length 432 ft
 STA 92+00-95+00 Long 300 ft

CURVE #22
 Δ 39° 36' LT
 D 15'
 R 322.0
 T 137.5
 L 264.0
 E 21.0

FOR ROAD STATE 43 RD 1074 SHEET 10 OF 43
 DIST. NO. 9 VI FR 40 1926 10 43



B.M. #10 Boulder, 56' Lx Sta. 96+63, Elev. 403.06
 B.M. #11 Spike in trunk of 18' Elm, 19' Lx Sta. 104+07, Elev. 430.06

see F III (9)

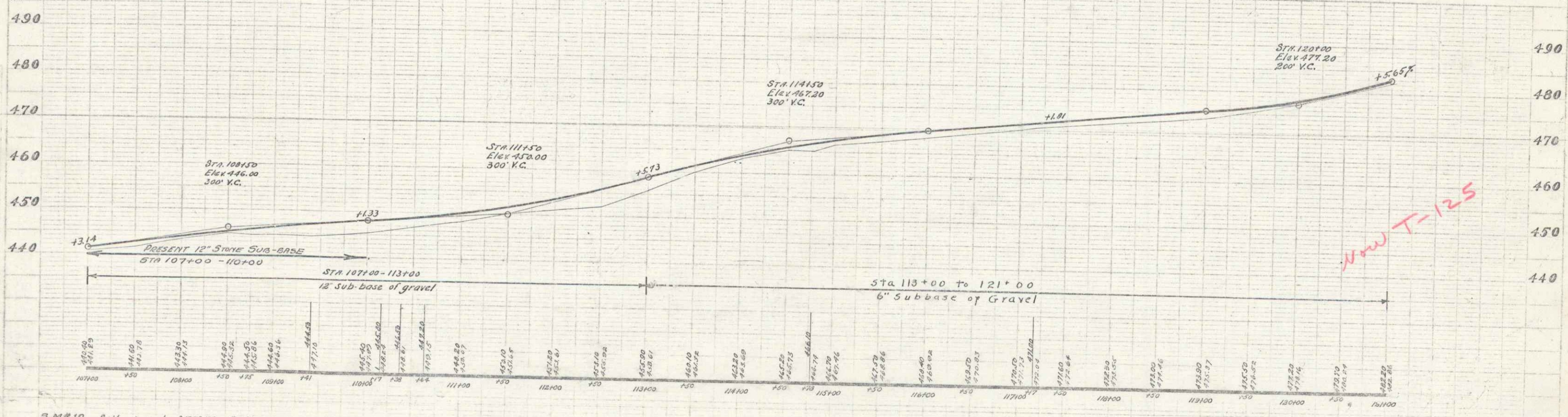
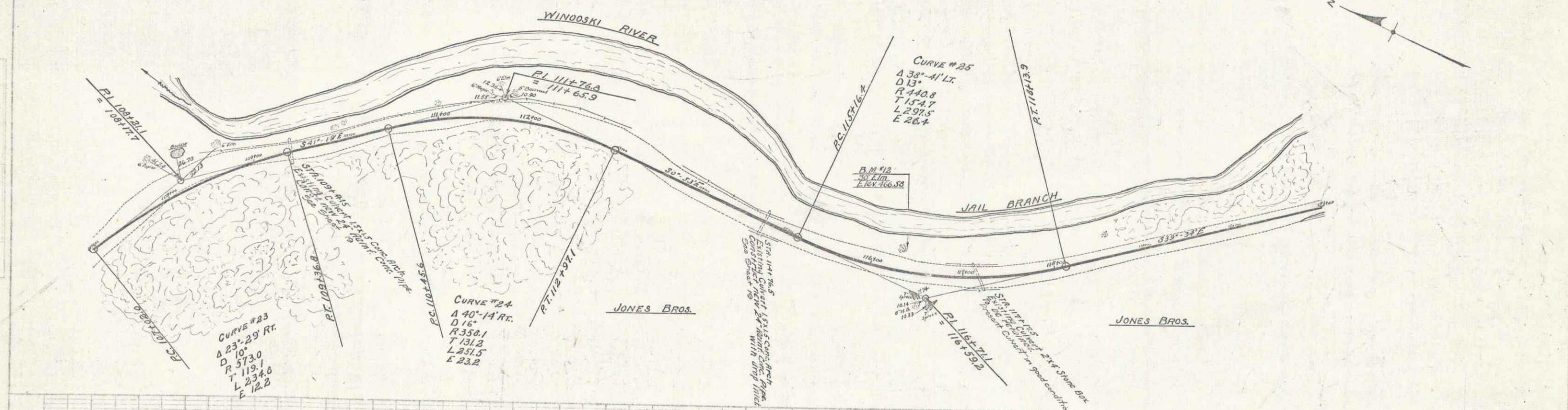
SERIES FR No. 4D
 SHEET 10 OF 43

New Culverts Required
 STA 1091+81 24" Reinf. Conc. Pipe Length 44 ft
 Concrete Class (11-2-4) 2-6 cu yds. 4.2
 Reinf. steel 28.105 174
 STA 114178 24" Reinf. Conc. Pipe Length 32 ft with D.I.
 Concrete Class (11-2-4) 2-6 cu yds. 4.9
 Reinf. steel 28.105 174

Wood Guard Rail Required
 STA 1091+20 - 1091+53 Length 24 ft
 - 117166 - 117190 - 24"
 - 117105 - 117129 - 24"

Cable Guard Rail Required
 STA 1081+60 - 117+85 Length 880 ft
 - 1221+50 - 121+20 - 89"

STATE OF NEW YORK
 DEPARTMENT OF TRANSPORTATION
 DIVISION OF HIGHWAYS
 PROJECT NO. FR 40 1984 11 43



B.M. #12 Spike in root of 30" Elm, 23' LT. Sta 116+20, Elev 466.58

New T-125

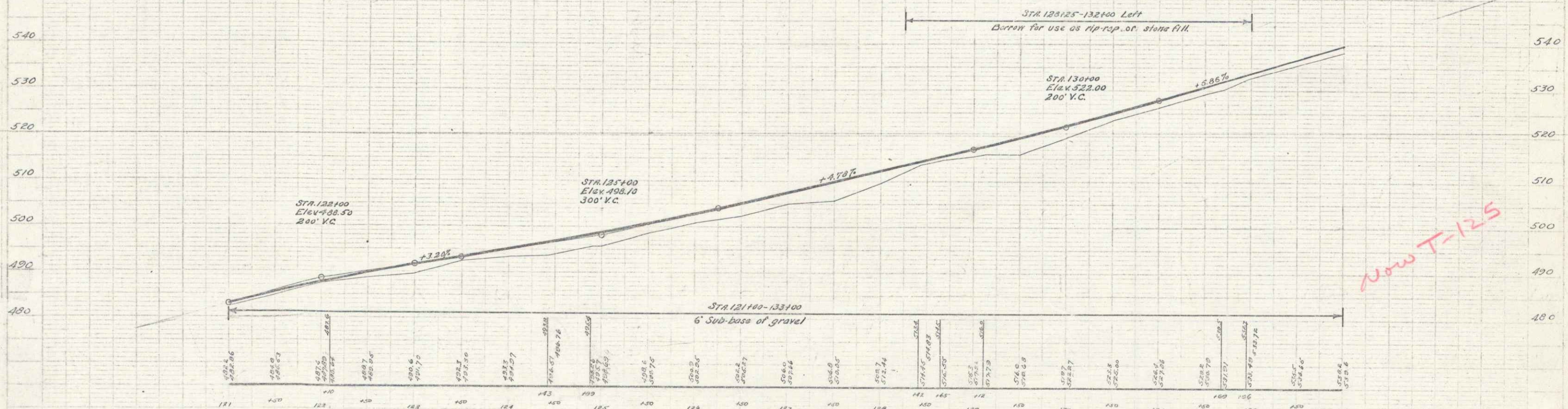
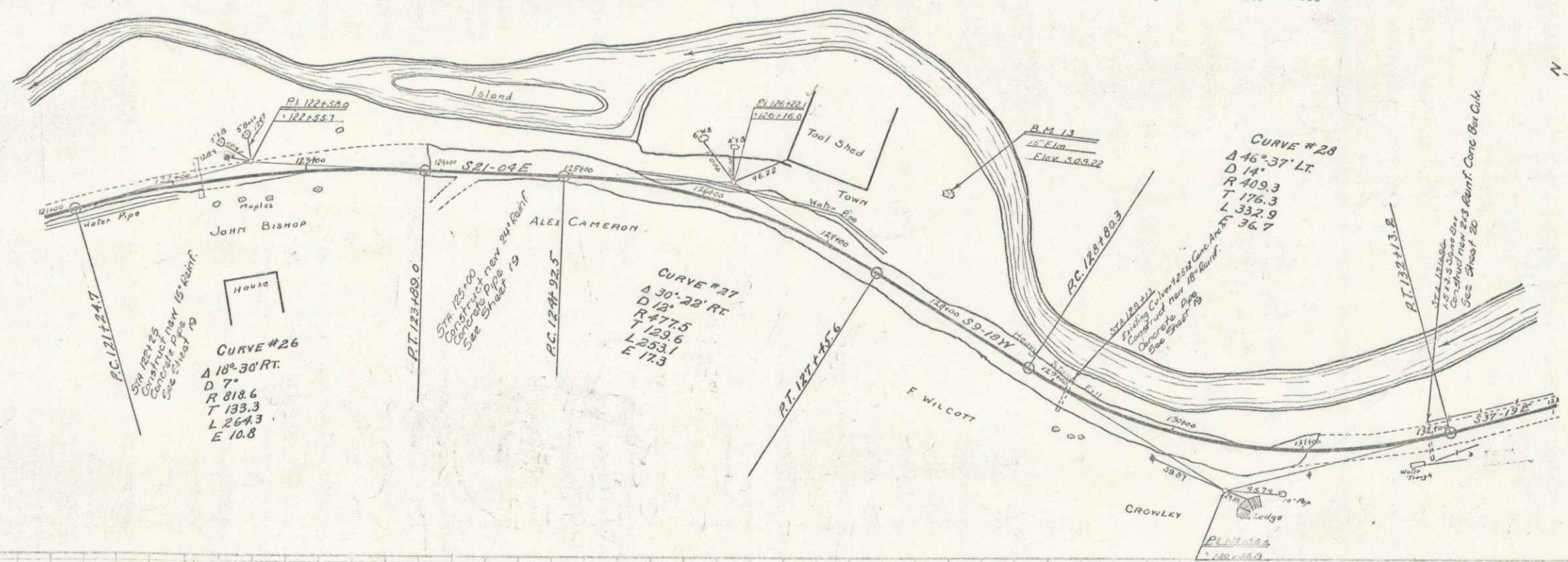
SURVEY No. 4-D
 SHEET 11 OF 13

CABLE GUARD RAIL REQUIRED
 On Left
 STA 121400 - STA 121550 350 Lin. Ft.
 STA 127100 - STA 131154 624 " "
 On Right
 STA 129100 - STA 129140 352 Lin. Ft.
 Total for sheet 1326 Lin. Ft.

WOOD GUARD RAIL REQUIRED
 On Right
 STA 122113 - STA 122137 24 Lin. Ft.
 STA 129100 - STA 129124 24 " "
 STA 131159 - STA 132100 24 " "
 Total for sheet 72 Lin. Ft.

NEW CULVERTS REQUIRED
 STA 122125 15" Rein. Conc. Pipe Length 32 FT
 Conc. Class B (1:2.4) 12.8 Cu. Yds
 Reinforcing Steel 3133 Lbs
 STA 123100 24" Rein. Conc. Pipe Length 40 FT
 Conc. Class A (1:2.4) 20 Cu. Yds
 Reinforcing Steel 3144 Lbs
 STA 129112 18" Rein. Conc. Pipe Length 48 FT
 Conc. Class A (1:2.4) 24 Cu. Yds
 Reinforcing Steel 3144 Lbs
 STA 131100 36" Rein. Conc. Pipe Length 15.244 Cu. Yds
 Conc. Class A (1:2.4) 15.244 Cu. Yds
 Reinforcing Steel 811 879 Lbs

FED. ROAD DIST. NO. STATE VT. FISCAL YEAR 1943
 PROJ. NO. 12 43



B.M. 13 Spike in bank 15' E of STA 127154 Elev. 508.22

Scale 1" = 40' HORIZ. 1" = 4' VERT. 12 04 43

