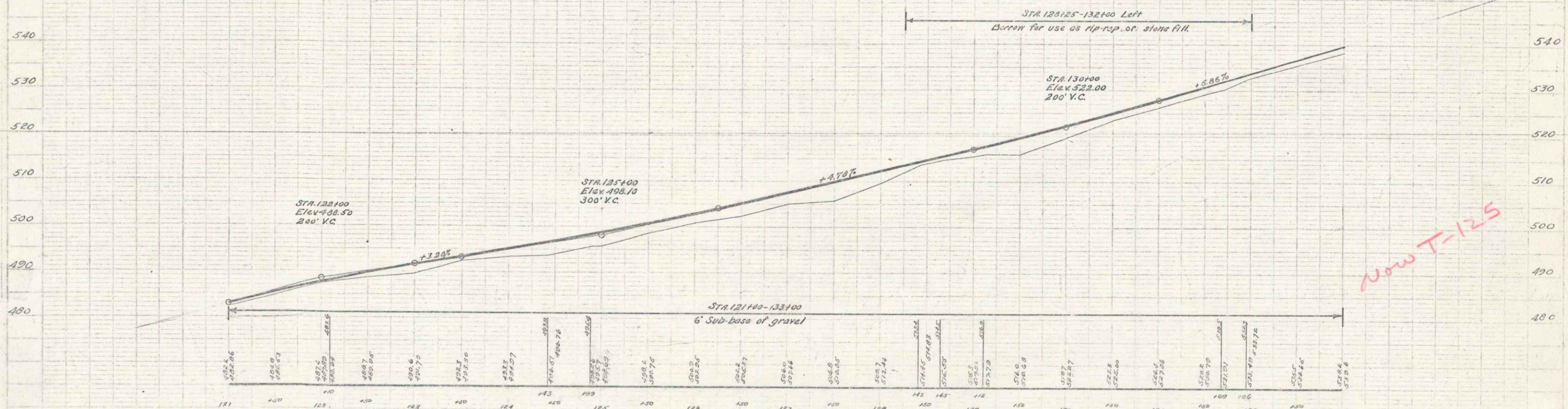
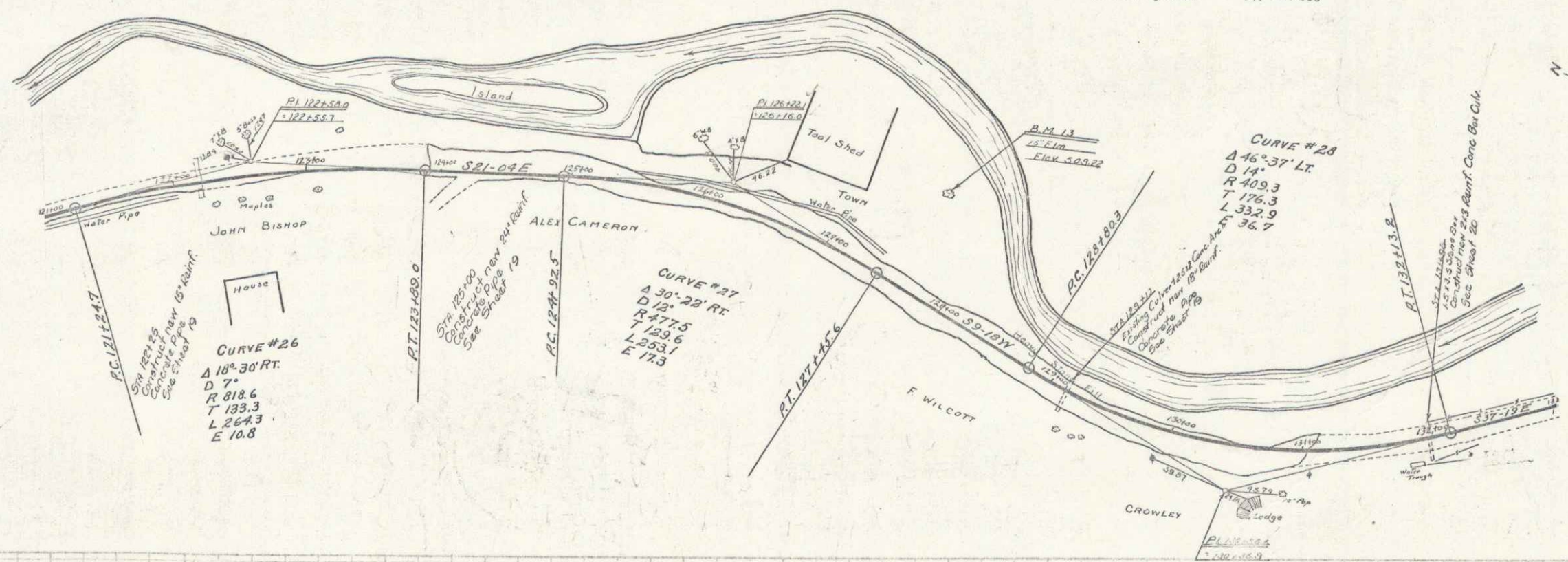


**CABLE GUARD RAIL REQUIRED**  
 On Left  
 STA 121400 - STA 121550 350 Lin. Ft.  
 STA 127100 - STA 131154 624 " "  
 On Right  
 STA 129100 - STA 129140 352 Lin. Ft.  
 Total for sheet 1326 Lin. Ft.

**WOOD GUARD RAIL REQUIRED**  
 On Right  
 STA 122113 - STA 122137 24 Lin. Ft.  
 STA 129100 - STA 129124 24 " "  
 STA 131159 - STA 132100 24 " "  
 Total for sheet 72 Lin. Ft.

**NEW CULVERTS REQUIRED**  
 STA 122125 15" Rein. Conc. Pipe Length 32 FT  
 Conc. Class B (1:2.4) 12.8 Cu. Yds  
 Reinforcing Steel 3133 Lbs  
 STA 123100 24" Rein. Conc. Pipe Length 40 FT  
 Conc. Class A (1:2.4) 20 Cu. Yds  
 Reinforcing Steel 3144 Lbs  
 STA 129112 18" Rein. Conc. Pipe Length 48 FT  
 Conc. Class A (1:2.4) 24 Cu. Yds  
 Reinforcing Steel 3144 Lbs  
 STA 131100 36" Rein. Conc. Pipe Length 15.244 Cu. Yds  
 Conc. Class A (1:2.4) 15.244 Cu. Yds  
 Reinforcing Steel 811 879 Lbs

FED. ROAD DIST. NO. STATE VT. FISCAL YEAR 1943  
 PROJ. NO. 12 00 43



B.M. 13 Spike in bank 15' E of STA 127154 Elev. 508.22

Scale 1" = 40' HORIZ. 1" = 4' VERT.