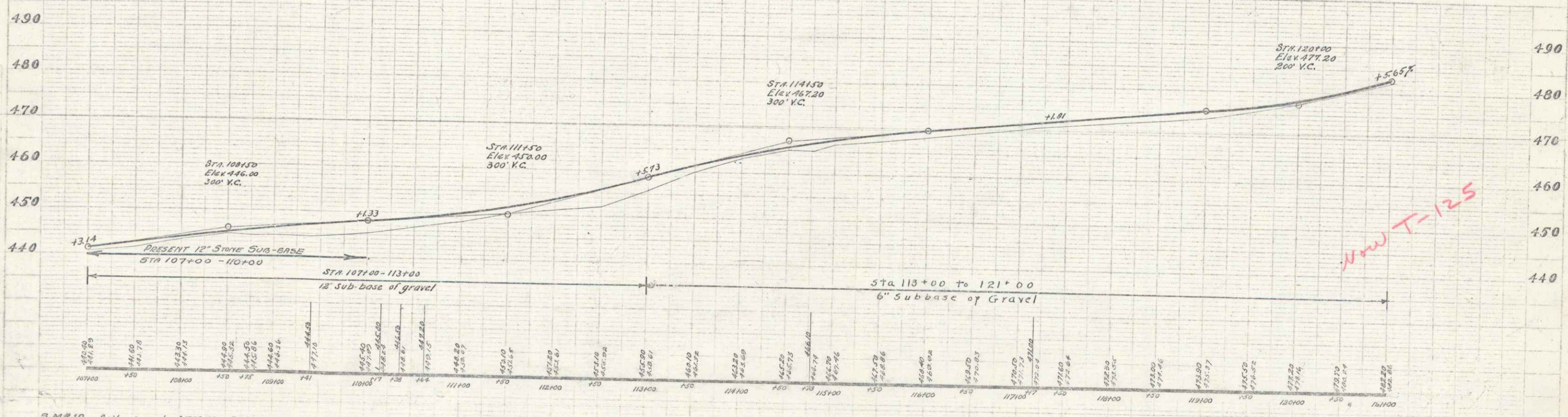
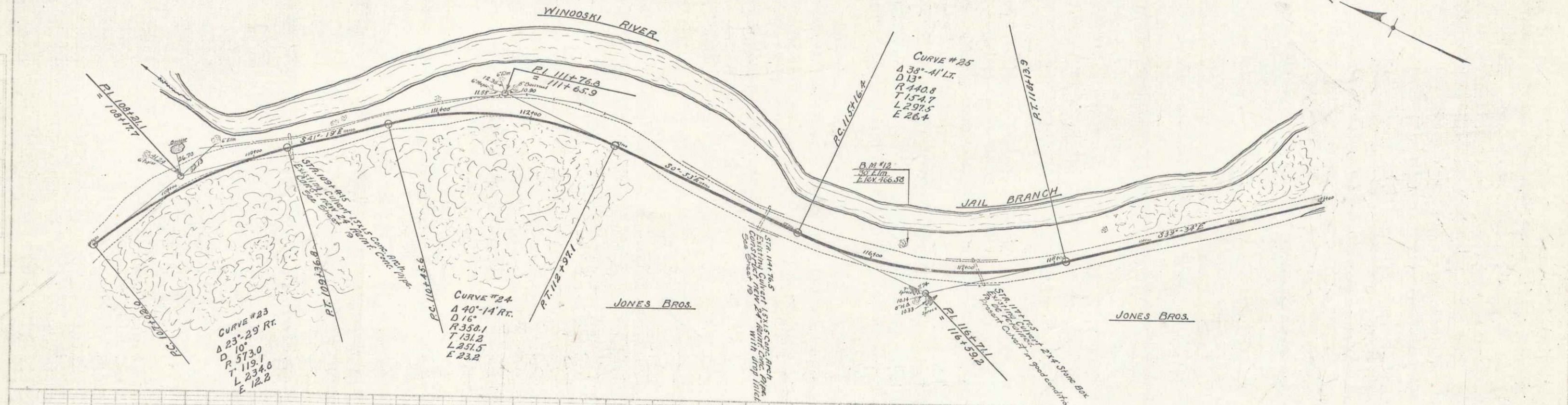


New Culverts Required  
 STA 1091+81 24" Reinf. Conc. Pipe Length 44 ft  
 Concrete Class (11-2-4) 2-6 cu yds. 4.2  
 Reinf. steel 28.105 174  
 STA 1141+78 24" Reinf. Conc. Pipe Length 32 ft with D.I.  
 Concrete Class (11-2-4) 2-6 cu yds. 4.9  
 Reinf. steel 28.105 174

Wood Guard Rail Required  
 STA 1091+20 - 1091+53 Length 24 ft  
 - 1171+66 - 1171+90 - 24 ft  
 - 1171+05 - 1171+29 - 24 ft

Cable Guard Rail Required  
 STA 1081+60 - 1171+45 Length 880 ft  
 - 1221+50 - 1211+20 - 89 ft

STATE OF NEW YORK  
 DEPARTMENT OF TRANSPORTATION  
 DIVISION OF HIGHWAYS  
 PROJECT NO. FR 40 1984 11 43



B.M. #12 Spike in root of 30' Elm, 23' Lt. Sta 116+20, Elev 466.58

*New T-125*

SHEET 11 OF 13