

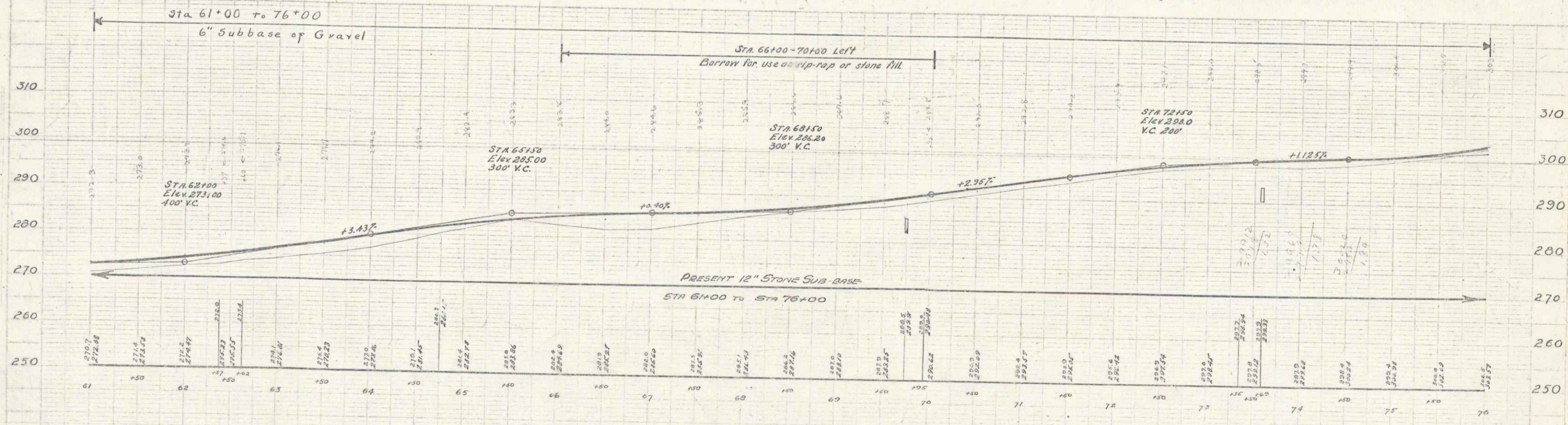
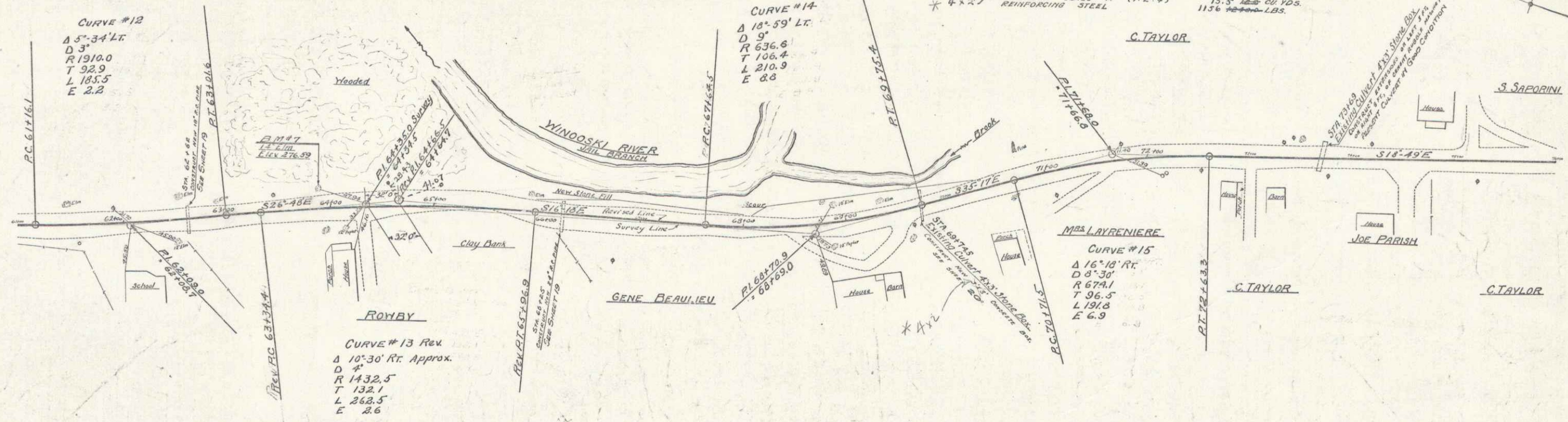
CABLE GUARD RAIL REQUIRED
 ON LEFT
 STA 64+30 - 65+34 44 LINEAR FEET
 65+76 - 71+29 352 LINEAR FEET
 73+40 - 74+38 96 LINEAR FEET
 ON RIGHT
 73+40 - 74+38 96 LINEAR FEET
 61+00 - 61+60 60 LINEAR FEET

WOOD GUARD RAIL REQUIRED
 ON RIGHT
 STA 62+50 - 62+74 24 LINEAR FEET
 63+13 - 63+37 24 LINEAR FEET
 69+63 - 69+87 24 LINEAR FEET
 TOTAL FOR SHEET 72 LINEAR FEET

NEW CULVERTS REQUIRED
 STA 62+62 18" REINFORCED CONCRETE PIPE LENGTH 36.0 FT. CONCRETE CLASS A (1:2:4) 4.3 YDS. 25,105 LBS.
 STA 66+23 24" REINFORCED CONCRETE PIPE LENGTH 36.0 FT. CONCRETE CLASS A (1:2:4) 6.1 YDS. 31,105 LBS.
 STA 69+75 30" CONCRETE BOX CONCRETE CLASS A (1:2:4) 11.5 YDS. 117,600 LBS.
 4"x4" REINFORCING STEEL 1176 LBS.

CULVERT REPAIRS REQUIRED
 STA 73+69 24" STAKE BOX CEMENT-FIDDLE MASSURE, 8" SKVD, 10.9

FR-41988 8 13



B.M. #7 Spike in trunk of 18" Elm, 19.5' Lt. Sta 63+90, Elev 276.5'9

SERIES FR No. 4D
 SHEET 8 OF 13