

NEW CULVERTS REQUIRED
 STA 49138 18" Reinf. Conc. Pipe Length 36 ft.
 Concrete class 4 (14-19) 34 cu yds. 4.2
 Reinf. steel 1-2-4 33 lbs. 31
 STA 43177 18" Reinf. Conc. Pipe Length 44 ft.
 Concrete class 4 (14-19) 31 cu yds. 4.7
 Reinf. steel 1-2-4 33 lbs. 31

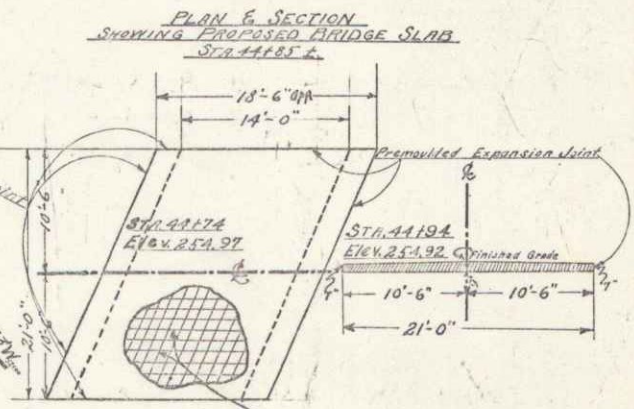
CRACK GUARD FLOW REQUIRED
RIGHT
 STA 40168-41172 Length 104 ft.
 42168-41174 270
 41190-41170 280
 Total for sheet 556 ft.

Sta 44185±
 Reinforced Concrete Slab Bridge, Span 14'-0" (Face to face of abutments)
 Roadway width 21'-0" between rails.
 State Aid construction in 1922.
 Condition good, to be retained.

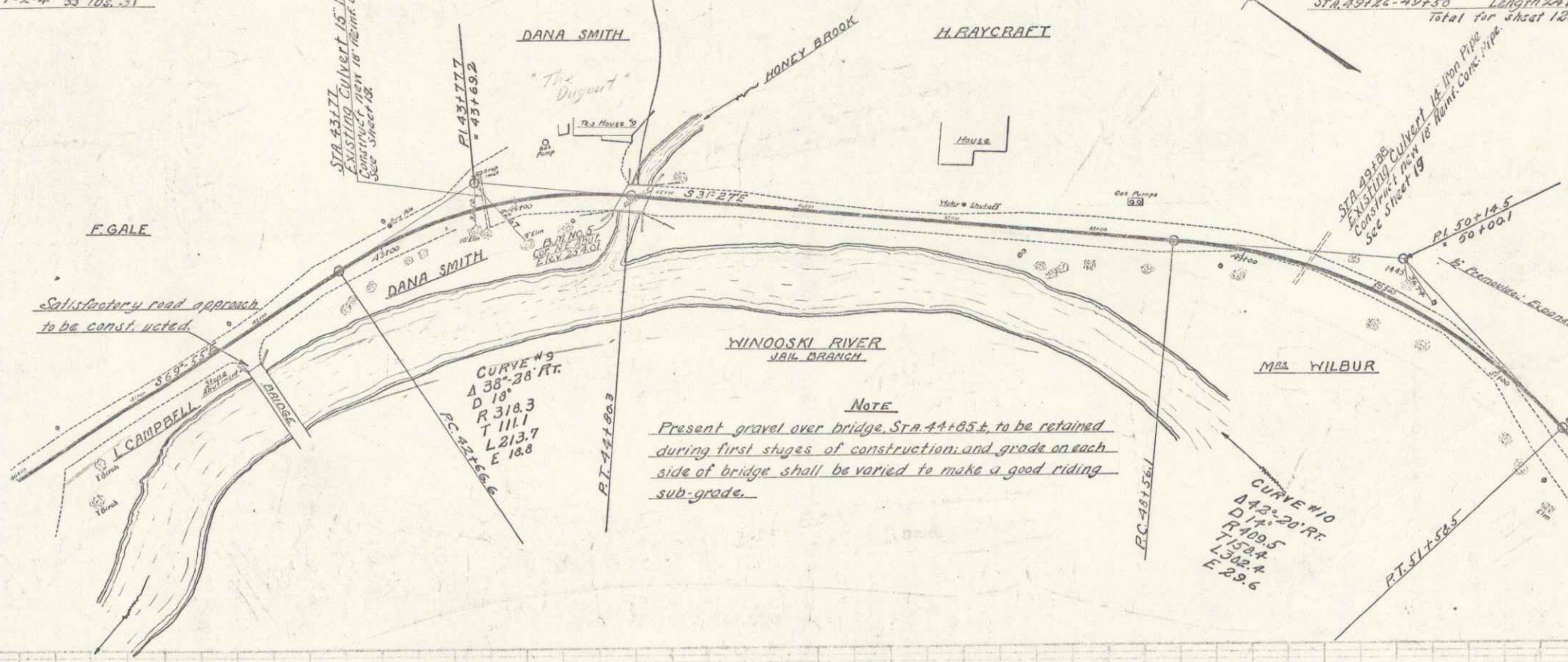
WOOD GUARD FLOW REQUIRED
LEFT
 STA 43164-43188 Length 24 ft.
 44152-44176 24
 44194-45118 24
 43126-43150 24
 STA 49126-49150 Length 24 ft.
 Total for sheet 120 ft.

TO BE INCLUDED IN 2ND STAGE OF CONSTRUCTION

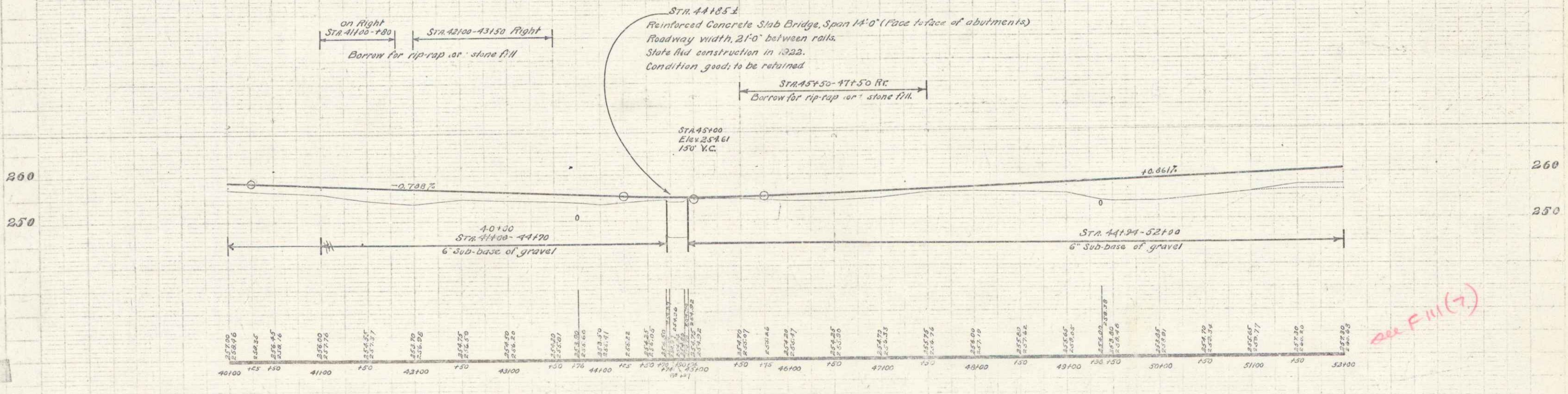
PAVEMENT
BRIDGE AT Sta. 44185±
 One course cement concrete pavement Type A, including steel reinforcement. Floor of present bridge to be thoroughly cleaned before construction of pavement. Expansion joints to be placed at the beginning and end of slab.



REINFORCING STEEL
 In addition to steel reinforcing mat 1/2" x 6" deformed bars, 6" c/c, placed 2 1/2" below top of mat.



NOTE
 Present gravel over bridge Sta. 44185± to be retained during first stages of construction and grade on each side of bridge shall be varied to make a good riding sub-grade.



B.M. #3 Cor. NE. abutment of Honey Brook Bridge, Sta. 44168, Elev. 254.01