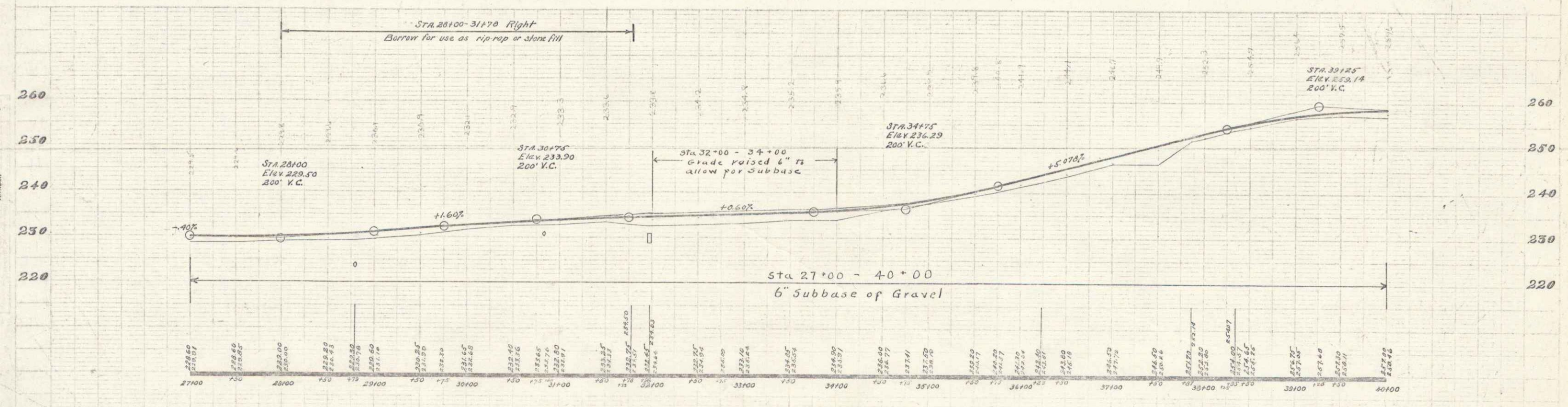
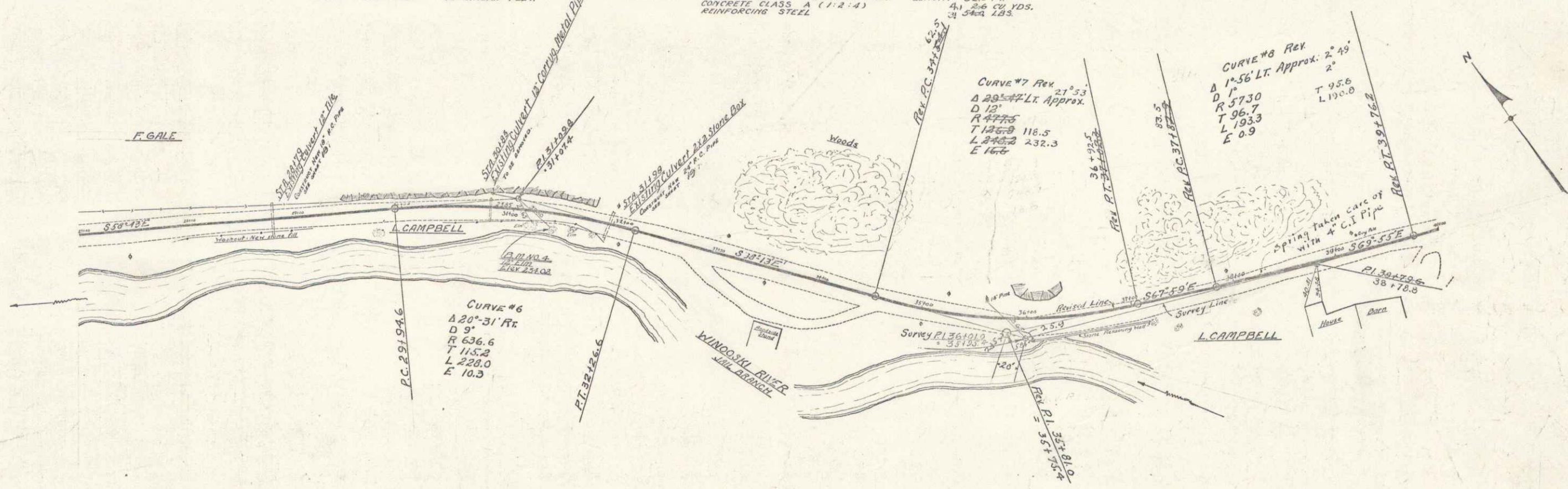


CABLE GUARD RAIL REQUIRED ON RIGHT
 STA 27+00 - 32+76 450 LINEAR FEET
 STA 33+00 - 37+50 400 LINEAR FEET
 TOTAL FOR SHEET 850 LINEAR FEET

WOOD GUARD RAIL REQUIRED ON LEFT
 STA 29+07 - 29+91 84 LINEAR FEET
 STA 31+00 - 32+10 110 LINEAR FEET
 TOTAL FOR SHEET 194 LINEAR FEET

NEW CULVERTS REQUIRED
 STA 29+70 18" REINFORCED CONCRETE PIPE LENGTH 40.0 FT with D.I.
 CONCRETE CLASS A (1:2:4) 40 TON CU YDS.
 REINFORCING STEEL 191.5+0 LBS.
 STA 31+00 24" REINFORCED CONCRETE PIPE LENGTH 32.0 FT
 CONCRETE CLASS A (1:2:4) 41.5+0 CU YDS.
 REINFORCING STEEL 342.1 LBS.

FRAD 1928 5-43



B.M. #4 Spike in trunk of slippery Elm 12.5' Pt. Sta 31+42 Elev 234.02

SERIES FR No. 10
 SHEET 5 OF 15