

BP

INDEX OF SHEETS

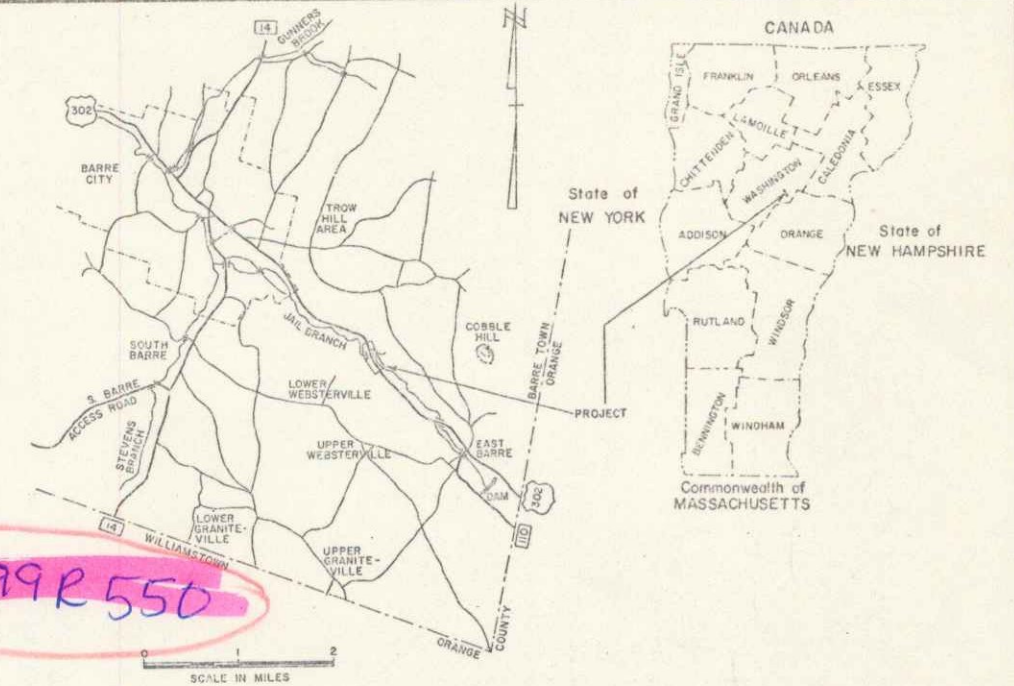
1. Title Sheet	
2. Typical Sheet	
3. Summary of Items and Drainage	
4. Grade and Earthworks	
5. E-7 Schedules 12/14/71	
6-8 Plan and Profile	
9. A-61 Drilling and Blasting of Solid Rock	12/8/71
10. B-5 Slope Grading	12/8/71
11. B-11 Slope Stabilization	12/8/71
12. D-2 C.R.M. Headers	3/8/72
13. D-2 Drop Inlets	12/18/71
14. E-3 Bridge Construction Approach Signs	12/18/71
15. E-5 Road Construction Barricade Project	12/18/71
16. E-8 On Project Construction Signs	12/18/71
17. G-4 Marker Posts	12/8/71
18. G-6 Bridge Railing for Bridge Approaches	12/14/71
19. G-8a Connection Details, Bridge Approach Railing & Standard Steel Beam Guard Rail	12/8/71
20. Standard Steel Beam Guard Rail Detail Sheet	
21. SOB-D1-71 General Information	1/24/72 R
22. SOB-D6-71 Details A & B	5/15/72 R
23. SOB-D7-71 Detail D	12/14/71
24. SOB-D8-71 Details A & B	12/14/71
25. SOB-D9-71 Detail A	12/14/71
26-27. SB-R1-71 Sheets 1 and 2 Bridge Rail Details	10/8/71 R
28-37. SB-100 Series	10/8/71
38-45. Cross Sections	

STATE OF VERMONT
DEPARTMENT OF HIGHWAYS



PROPOSED IMPROVEMENT
BETTERMENT PROJECT
TOWN OF BARRE
COUNTY OF WASHINGTON
U.S. ROUTE 302

Pin# 992550

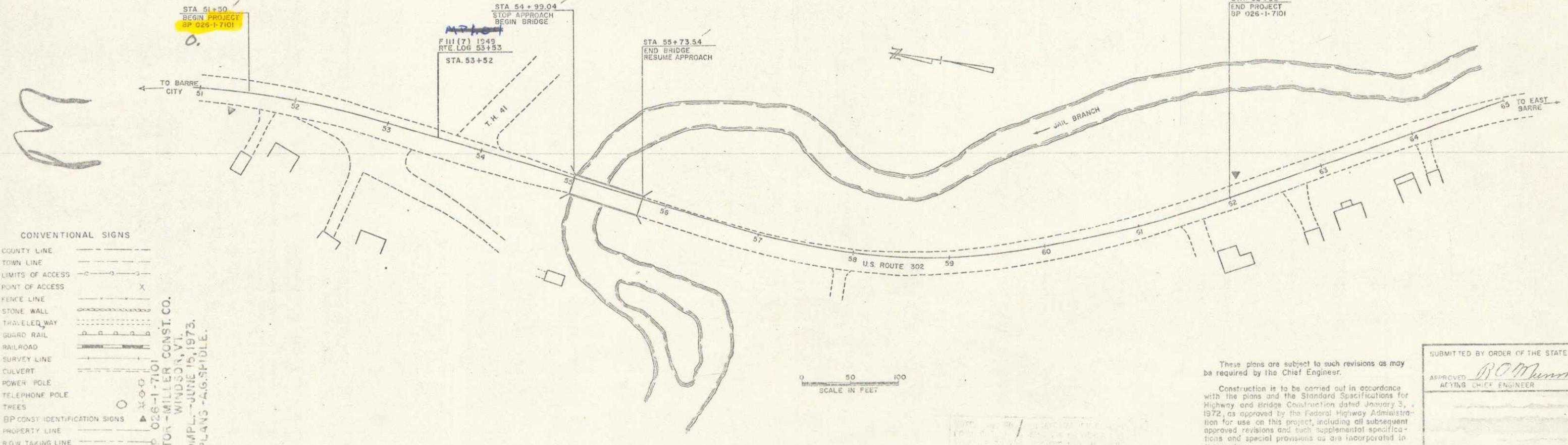


**BARRE BP 026-1-7101
RECORD PLANS
MATERIALS**

SUBBASE OF GRAVEL - LAMSON PIT - SO. BARRE, VT.
BITUMINOUS CONCRETE - COOLEY ASPHALT PAVING CORP. - BARRE, VT.
CONCRETE CLASS A B - HUTCH MATERIAL & SUPPLY CORP. - MONTPELIER, VT.
REINFORCING STEEL - BANCROFT & MARTIN, INC. - SC. PORTLAND, ME.
STRUCTURAL STEEL & BRIDGE RAILING - VERMONT STRUCTURAL STEEL CORP. - BURLINGTON, VT.
SHEAR CONNECTORS - NORTHEASTERN STEEL WELDING CO. - GUILDFORD, N.Y.
MEMBRANE WATERPROOFING - VERMONT SEALCOATING, INC. - BARRE, VT.
REINFORCED CONCRETE PIPE - S.T. CRISWOLD & CO., INC. - MILLISTON, VT.
BRIDGE PAINT - W.C. LANDON, INC. - RUTLAND, VT. & C.E. PROBLEY LABS. - BRATTLEBORO, VT.
WATER REPELLENT & EPOXY BONDING COMPOUND - KIRBY EQUIPMENT CO. - WHITE RIVER JUNCTION, VT.
GRANITE BRIDGE CURB - THE JOHN SWENSON GRANITE CO., INC. - CONCORD, N.H.

CONTRACTOR - MILLER CONSTRUCTION INC. CONTRACT DATED - JULY 18, 1972.
WINDSOR, VT. STARTED - JULY 27, 1972.
RES. ENG. - HORACE H. DUKE, JR. COMPLETED - JUNE 15, 1973.
RECORD PLANS - A.G. SPIDLE. ACCEPTED - JUNE 15, 1973.

BEGINNING AT A POINT 0.992 MILES SOUTHEAST OF THE BARRE CITY - TOWN LINE AND EXTENDING SOUTHEASTERLY 0.193 MILES
LENGTH OF ROADWAY 575.50 FEET = 0.185 MILES
LENGTH OF BRIDGE 74.50 FEET = 0.022 MILES
LENGTH OF PROJECT 1050.00 FEET = 0.199 MILES



CONVENTIONAL SIGNS

COUNTY LINE	---
TOWN LINE	- - -
LIMITS OF ACCESS	○
POINT OF ACCESS	X
FENCE LINE	—X—X—X—
STONE WALL	—X—X—X—
TRAVELED WAY	—X—X—X—
GUARD RAIL	—X—X—X—
RAILROAD	—X—X—X—
SURVEY LINE	—X—X—X—
CULVERT	—X—X—X—
POWER POLE	—X—X—X—
TELEPHONE POLE	—X—X—X—
TREES	—X—X—X—
BP CONST. IDENTIFICATION SIGNS	—X—X—X—
PROPERTY LINE	—X—X—X—
R.O.W. TAKING LINE	—X—X—X—
SLOPE RIGHTS	—X—X—X—
TOP OF CUT	—X—X—X—
TOE OF SLOPE	—X—X—X—

SCALE BP 026-1-7101
SCALE 1" = 40'
SCALE 1" = 100'
SCALE 1" = 200'

These plans are subject to such revisions as may be required by the Chief Engineer.
Construction is to be carried out in accordance with the plans and the Standard Specifications for Highway and Bridge Construction dated January 3, 1972, as approved by the Federal Highway Administration for use on this project, including all subsequent approved revisions and such supplemental specifications and special provisions as are incorporated in these plans.

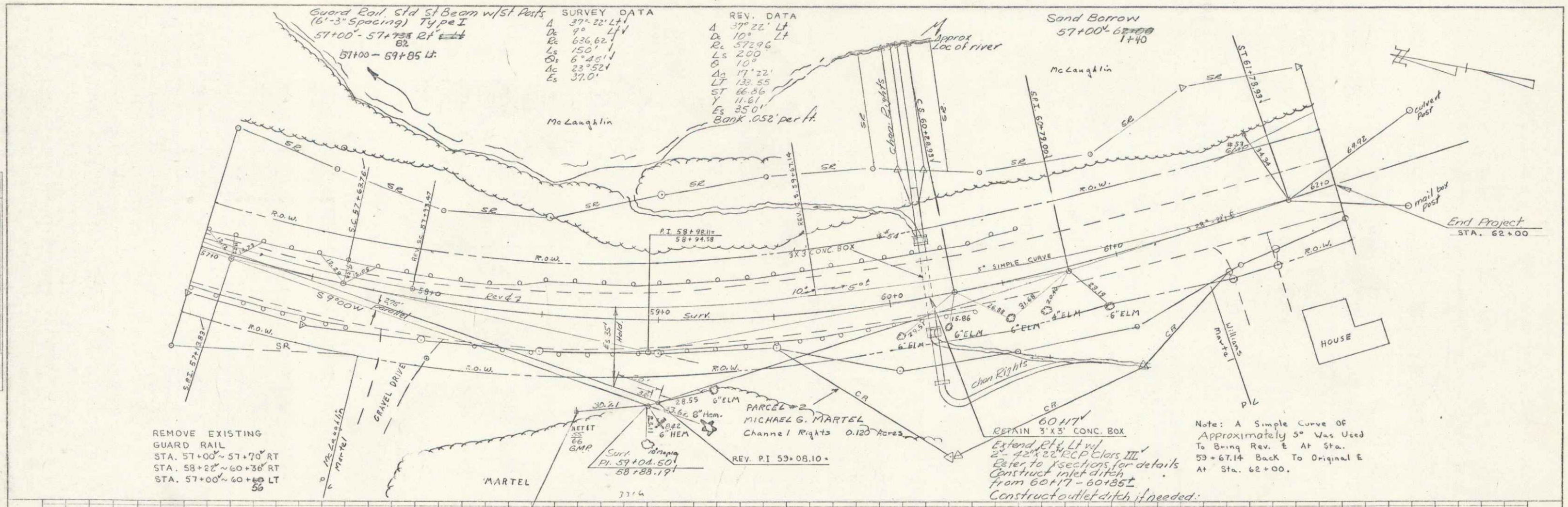
SUBMITTED BY ORDER OF THE STATE HIGHWAY BOARD

APPROVED: *R.C. Merritt* DATE 4-5-73
ACTING CHIEF ENGINEER

PROJECT: BP 026-1-7101

SHEET 1 OF 45 SHEETS

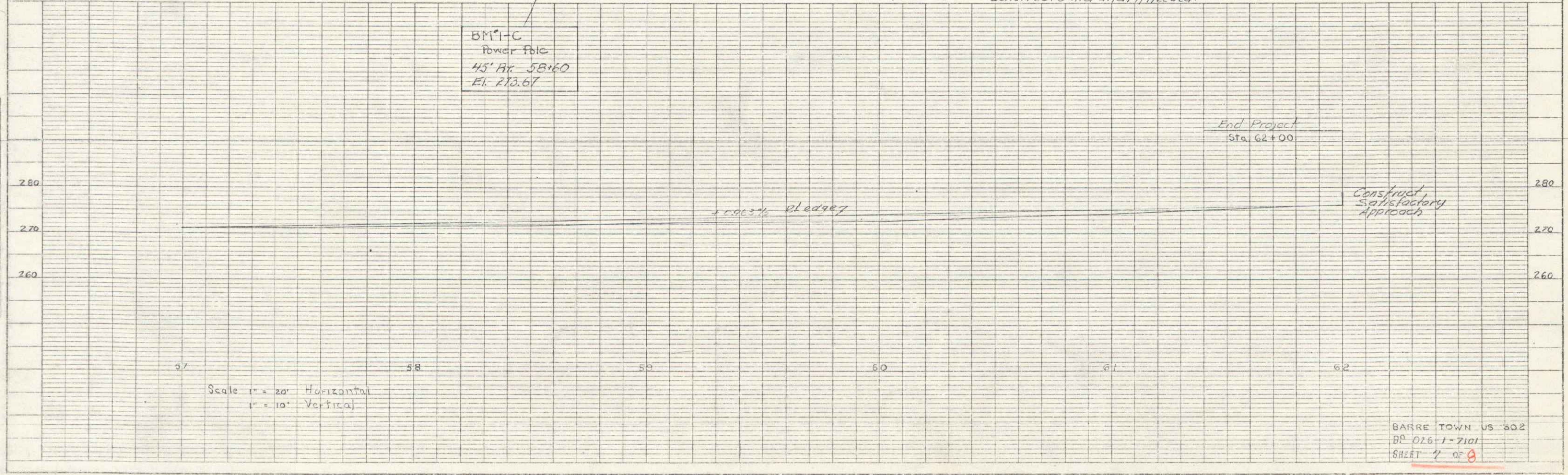
DATE 12/19/71



REMOVE EXISTING
GUARD RAIL
STA. 57+00' - 57+70' RT
STA. 58+22' - 60+36' RT
STA. 57+00' - 60+36' LT

BM 1-C
Power Pole
45' BK 58+60
El. 213.67

Note: A Simple Curve of
Approximately 5° Was Used
To Bring Rev. E At Sta.
59+67.14 Back To Original E
At Sta. 62+00.

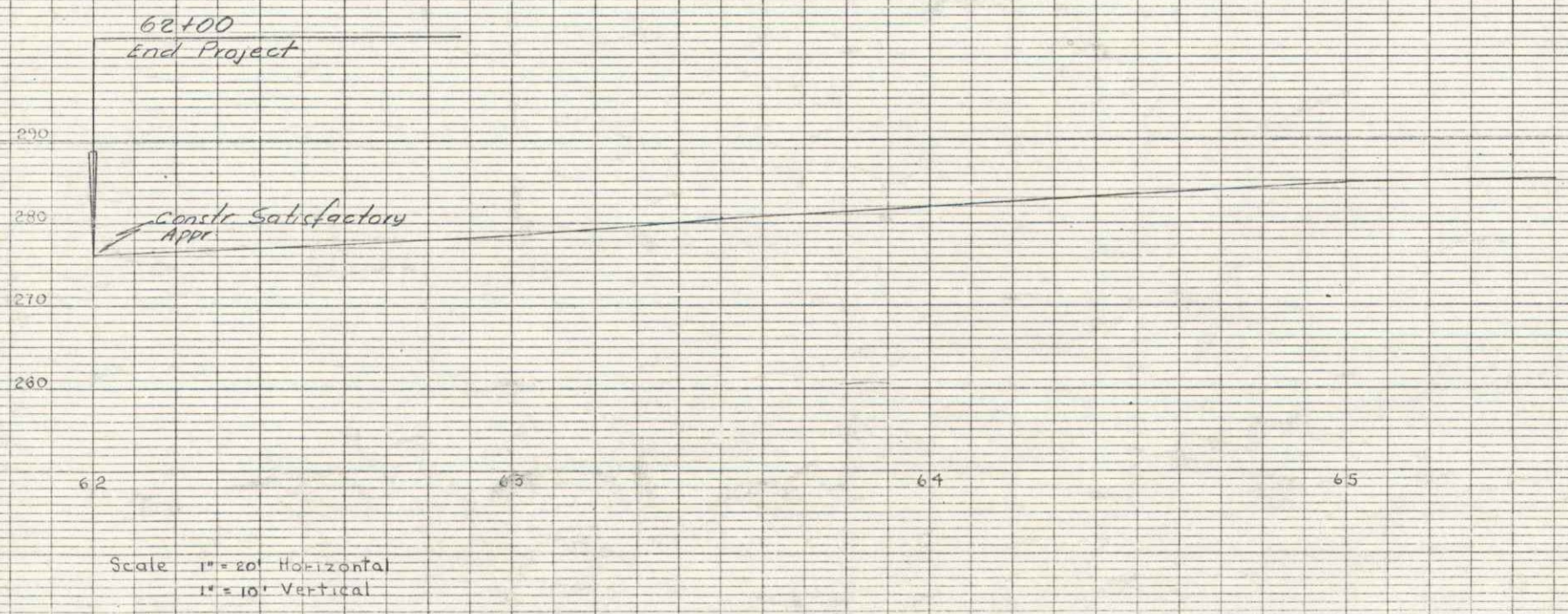
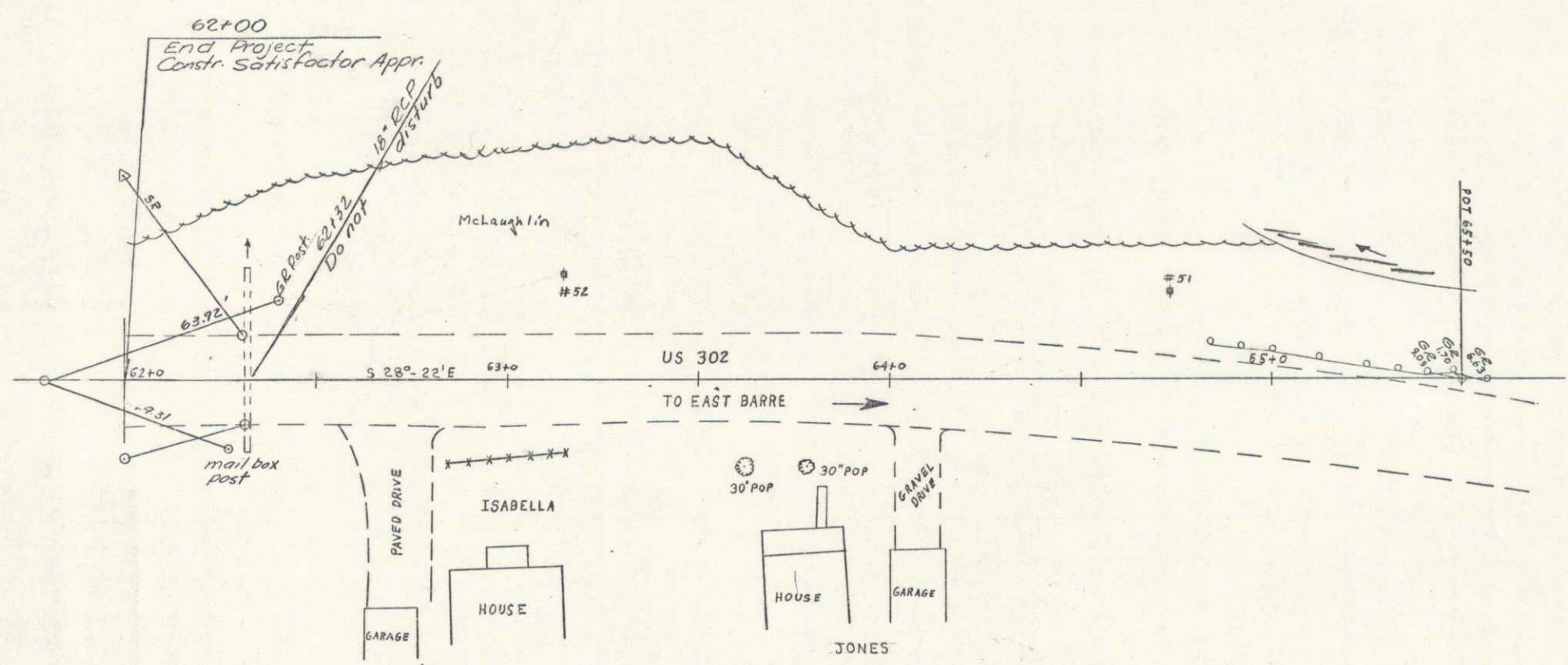


Scale 1" = 20' Horizontal
1" = 10' Vertical

BARRE TOWN US 302
BD 026 1-2101
SHEET 7 OF 8

PLAN
 REVISED BY
 DATE CHECKED
 BY OF THE PROJECT

PROJ. NO.
 DATE
 CHECKED BY
 DATE



Scale 1" = 20' Horizontal
 1" = 10' Vertical

BARRE TOWN US 302
 BP 026-1-7101
 SHEET 6 OF 8

K&E PLATE 1, PLAN AND PROFILE
 PENNELL & BUCK CO.