

INDEX OF SHEETS

SHEET NO.	TITLE PAGE
1	TYPICAL CROSS-SECTION OF IMPROVEMENT
2	BANKING AND WIDENING TABLES
3	QUANTITY SHEET
4	EARTHWORK SHEET
5-6	PLAN AND PROFILE
7-10	PLAN AND BARREL SECTION
11	BOX DETAILS
12	STANDARD STRUCTURE SHEET
13	50-1 BRIDGE DETAILS
14	28 PIPE CULVERTS
15	30A DRAINAGE STRUCTURES
16	40 BARRICADES, SIGNS, & LIGHTS
17	41 ROUNDING OF SLOPES
18	48 GUARD RAIL
19	21-28 CROSS SECTIONS

2 1/2" CRUSHED GRAVEL MIXED-IN-PLACE SURFACE COURSE WITH GUTBACK ASPHALT, AND PRIME COAT OF REFINED TAR, ITEMS 26, 30, 31

STATE OF VERMONT

STATE HIGHWAY DEPARTMENT

PLAN AND PROFILE OF PROPOSED STATE HIGHWAY

FEDERAL PROJECT

TOWN OF BARRE  
BARRE-EAST BARRE ROAD  
U.S. ROUTE 302

Pin # 99R548

FED. ROAD DIST. NO.	STATE	PROJ. NO.	SERIAL SHEET	TOTAL SHEETS
9	Vt.	1177	1	28

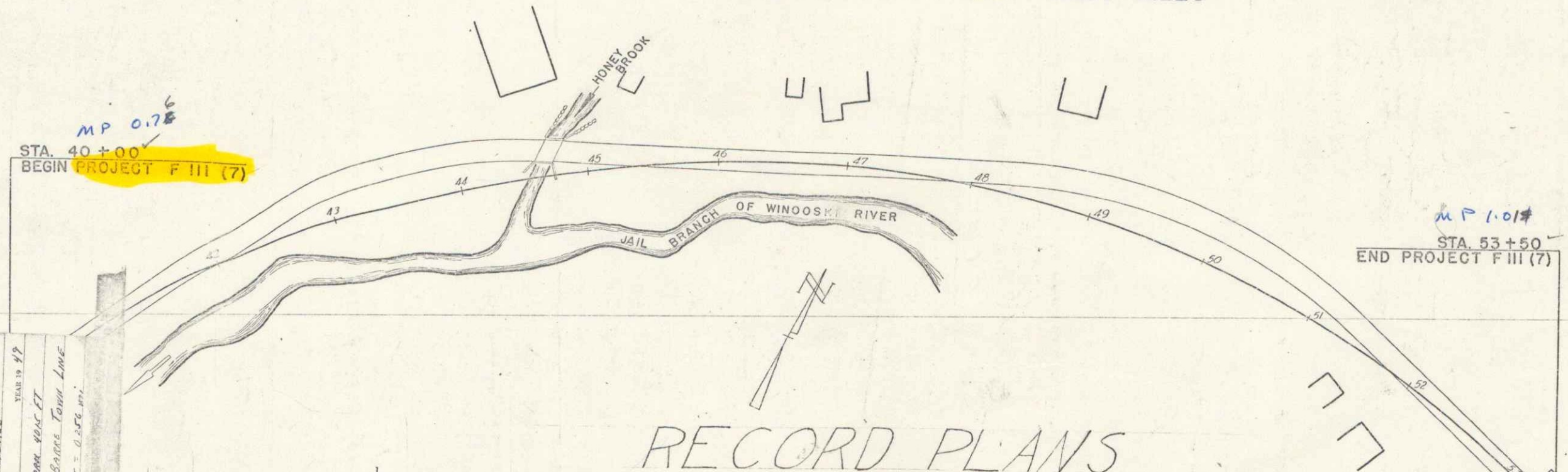
POST WAR F.A. PRIMARY



STANDARD STRUCTURE SHEETS APPROVED BY THE CHIEF ENGINEER VERMONT STATE DEPT. OF HIGHWAYS

- S 28 APRIL 26, 1944
- S 30A APRIL 19, 1944
- S 40 DEC 18, 1945

BEGINNING AT A POINT APPROXIMATELY 4015 FEET EASTERLY OF THE BARRE CITY-BARRE TOWN LINE AND EXTENDING EASTERLY 1350.0 FEET  
LENGTH OF PROJECT 1350.0 FEET = 0.256 MILES



RECORD PLANS

Prepared by M.L. Bliss & L.R. Magnant  
Resident Engineers - T. Dudley & R. Kere

PROJECT: BARRE  
NUMBER: F-11171  
DATE: 1945  
CONTRACTOR: Leo R. Adams & I. L. Lenz  
LOCATION: BEGINNING AT A POINT APPROXIMATELY 4015 FEET EASTERLY OF THE BARRE CITY-BARRE TOWN LINE AND EXTENDING EASTERLY 1350.0 FEET  
LENGTH: 0.256 MI.

ITEM	DATE	BY
GROUND ELEVATION	BATHY	LINE
GRADE ELEVATION	BATHY	LINE

ITEM	SCALE
TITLE	1" = 50'
TYPICAL	1" = 2'
PLAN	1" = 20'
PROFILE HORIZONTAL	1" = 20'
PROFILE VERTICAL	1" = 10'
CROSS SECTIONS	1" = 5'

THESE PLANS ARE SUBJECT TO SUCH REVISIONS AS MAY BE REQUIRED BY THE PUBLIC ROADS ADMINISTRATION OR THE COMMISSIONER OF HIGHWAYS.  
CONSTRUCTION IS TO BE CARRIED ON IN ACCORDANCE WITH THE PLANS AND THE STANDARD ROAD AND BRIDGE SPECIFICATIONS OF 1934 AS APPROVED DECEMBER 23, 1934 BY THE PUBLIC ROADS ADMINISTRATION, INCLUDING ALL SUBSEQUENT APPROVED REVISIONS AND SUCH REVISED SPECIFICATIONS AND SPECIAL PROVISIONS AS ARE SUBMITTED WITH THE PLANS.

APPROVED: 26 July 45  
H. E. Sauguet  
COMMISSIONER OF HIGHWAYS

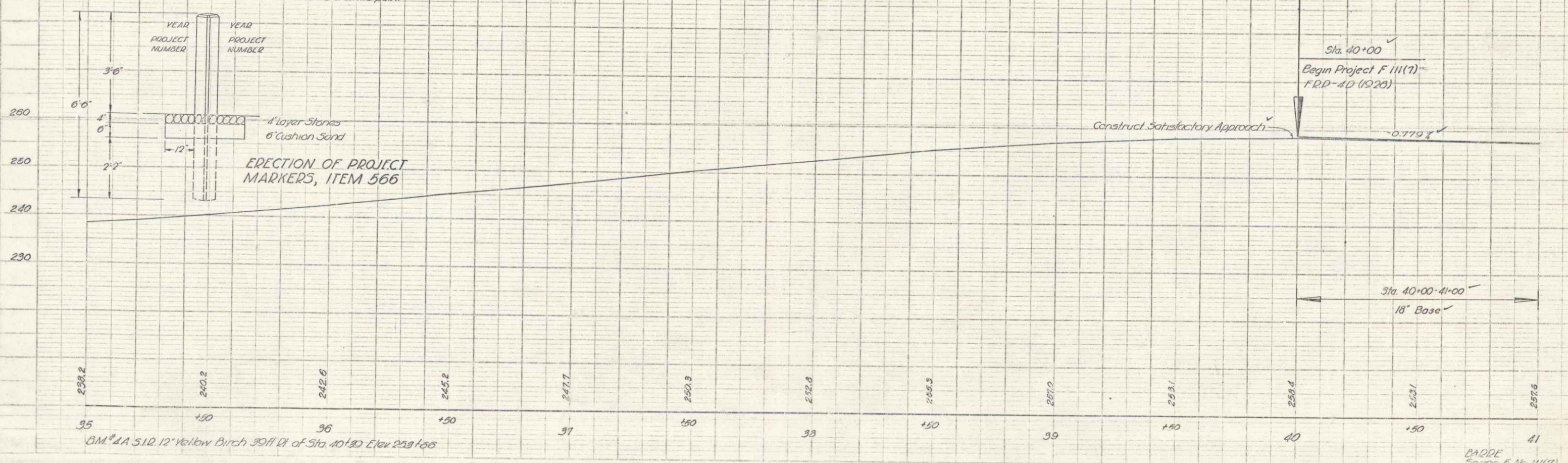
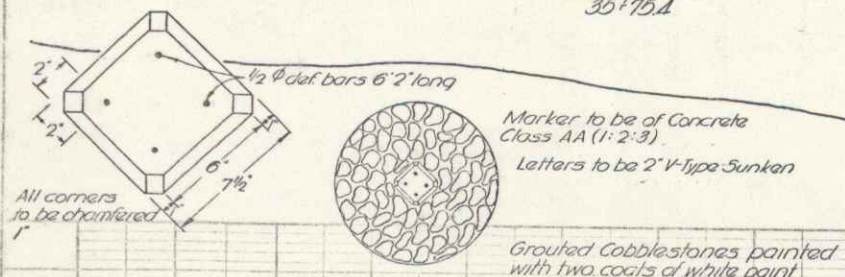
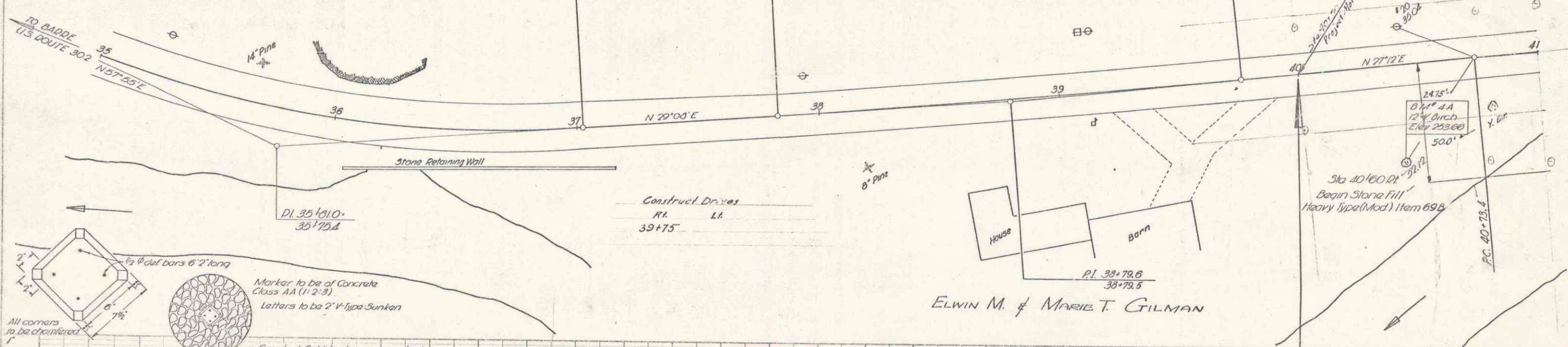
APPROVED: [Signature]  
DISTRICT HIGHWAY ENGINEER  
APPROVED: [Signature]  
DISTRICT HIGHWAY COMMISSIONER  
SERIES F NO. 11171 FILED  
SHEET 1 OF 28

$\Delta$  29°47'Lt  
 D 12°  
 R 417.5  
 T 120.9  
 L 243.2  
 E 18.6

$\Delta$  1°56'Lt  
 D 1°  
 R 5730  
 T 96.7  
 L 193.3  
 E 0.9

40+000 to 53+500  
 Present Concrete Pavement is to be removed, item 12, Cold Rock Excavation. This material is to be wasted.  
 Sub-base of Gravel, item 19C, is to be placed where pavement is removed.  
 Mulch, item 622, is to be placed on all earth slopes.

POST WAR F.A. PRIMARY  
 DIST. NO. STATE PROJ. YEAR  
 111(7)

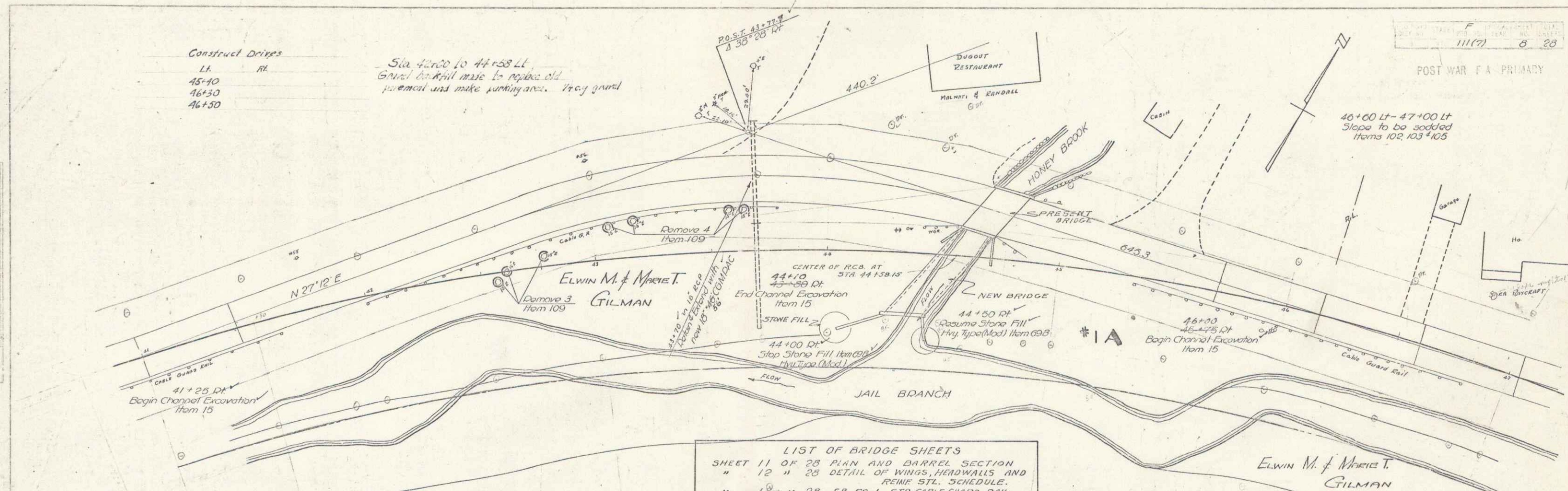


BADDE  
 Series F No 111(7)  
 Sheet 7 of 25 Sheets

Construct Drains  
 Lt. Rt.  
 45+40  
 46+30  
 46+50

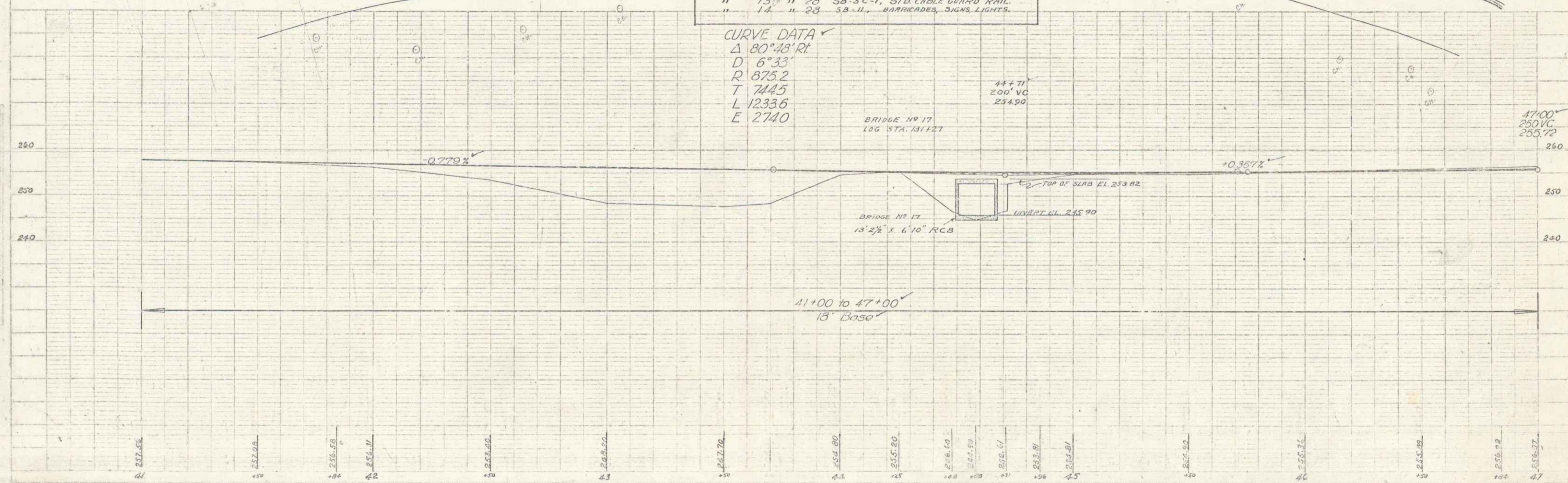
Sta. 42+00 to 44+58 LL  
 Gravel for fill mass to replace old  
 pavement and make parking area. Proc. gravel

POST WAR F.A. PRIMARY  
 111(7) 8 28



LIST OF BRIDGE SHEETS  
 SHEET 11 OF 28 PLAN AND BARREL SECTION  
 " 12 " 28 DETAIL OF WINGS, HEADWALLS AND  
 REIN. STL. SCHEDULE.  
 " 13 " 28 SB-SC-1, STD. CABLE GUARD RAIL.  
 " 14 " 28 SB-U, BARRICADED SIGNS, LIGHTS.

CURVE DATA  
 Δ 80° 48' RT  
 D 6° 33'  
 R 875.2  
 T 744.5  
 L 1233.6  
 E 274.0



BRIDGE  
 Series F no. 111(7)  
 Sheet 8 of 28 sheets



