

GUARD RAIL REQUIRED.
ON LEFT

68128 to 68152 Length 24 FT
70139 to 70163 " 24 "

TOTAL THIS SHEET 48 FT

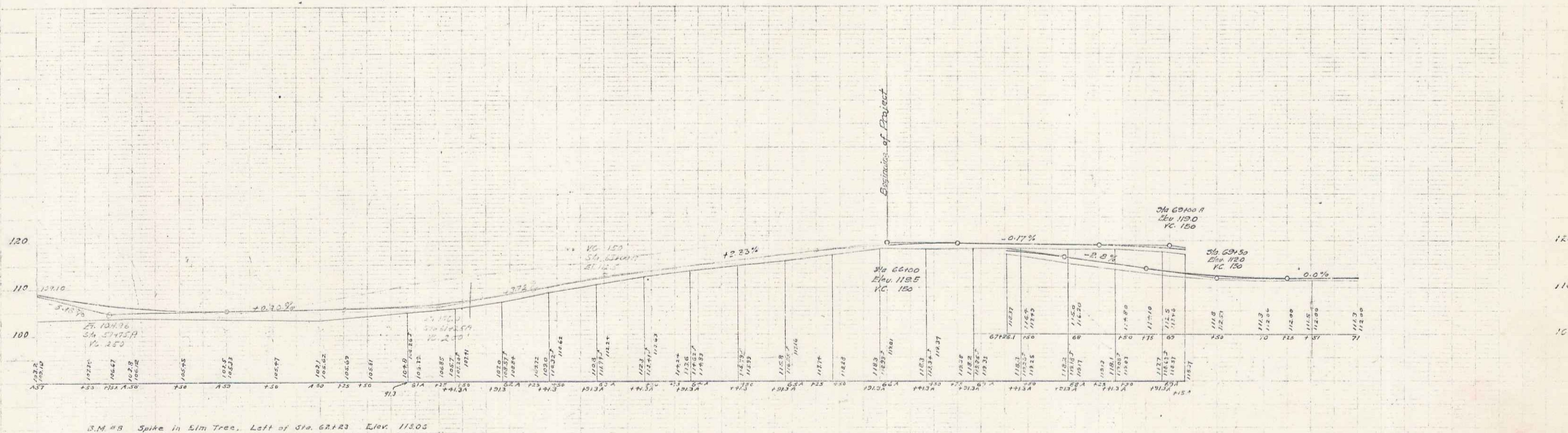
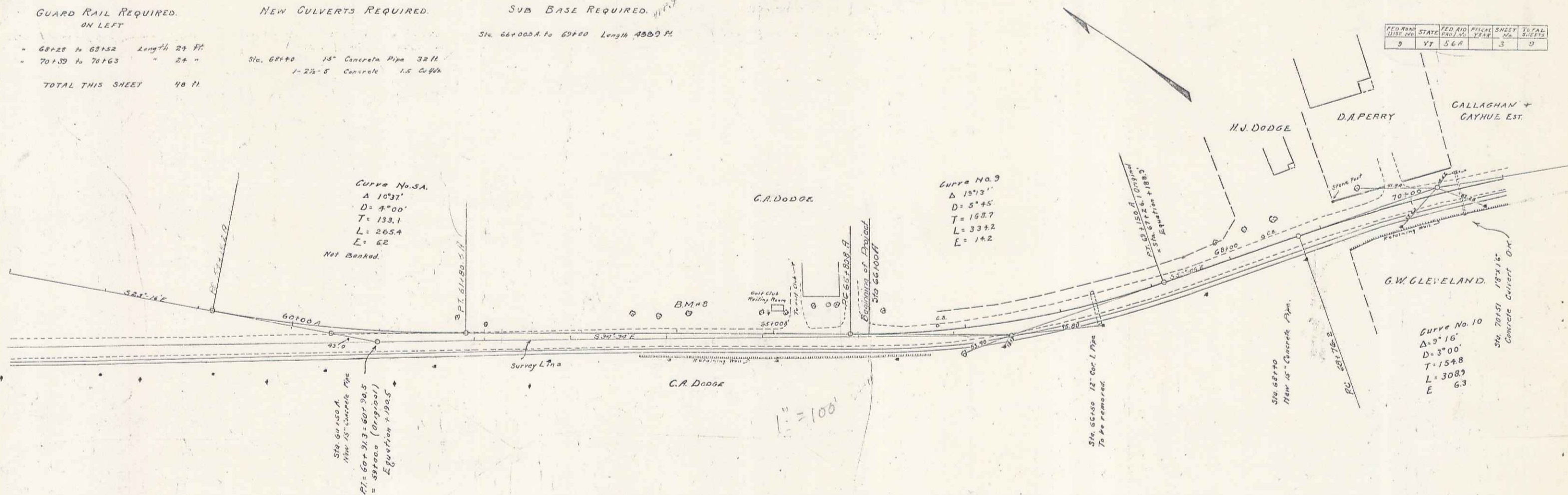
NEW CULVERTS REQUIRED.

Sta. 68140 18" Concrete Pipe 32 ft
1-24" 5' Concrete 1.5 Cuffs

SUB BASE REQUIRED.

Sta. 68000A to 68100 Length 100 FT

FED. ROAD DIST. NO.	STATE	FED. AID PROJ. NO.	SHEET NO.	TOTAL SHEETS
9	VT	56A	3	9



Carl M. M...
 S. J. Hayward...
 3/1/13

B.M. #8 Spike in Elm Tree, Left of Sta. 68123 Elev. 113.02

GUARD RAIL REQUIRED ON LEFT.
 Sta. 73+70 to 73+71 Length 24 ft
 Sta. 81+92 to 81+66 " 24 "

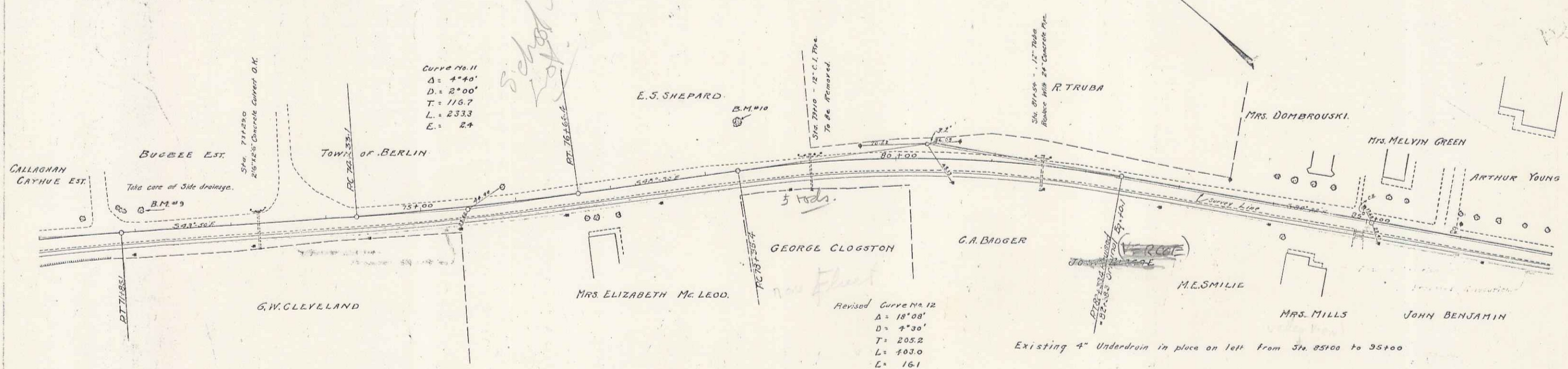
NEW CULVERTS REQUIRED.
 Sta. 81+50 - 24" Concrete Pipe 44 ft
 1-24" Concrete 1.5 Cuffs.

SUB BASE REQUIRED.
 Sta. 77+25 to 81+00 Length 375 ft

STANDARD UNDERDRAIN.
 Sta. 73+29 to 73+10 Length 591 ft

TOTAL THIS SHEET 42 FT

FORMA	STATE	FED. NO.	FISCAL YEAR	SHEET NO.	TOTAL SHEETS
3	VT	56A		7	9

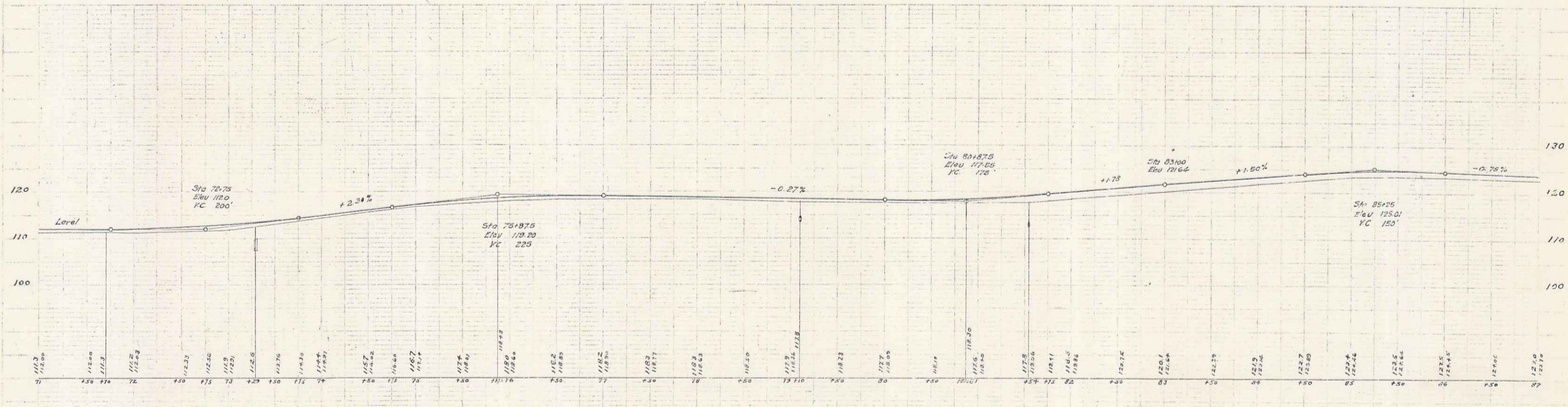


Curve No. 11
 $\Delta = 44^\circ$
 $D = 2^\circ 00'$
 $T = 116.7$
 $L = 233.3$
 $E = 24$

Revised Curve No. 12
 $\Delta = 18^\circ 08'$
 $D = 4^\circ 30'$
 $T = 205.2$
 $L = 403.0$
 $E = 161$

Existing 4" Underdrain in place on left from Sta. 85+00 to 95+00

1" = 100'

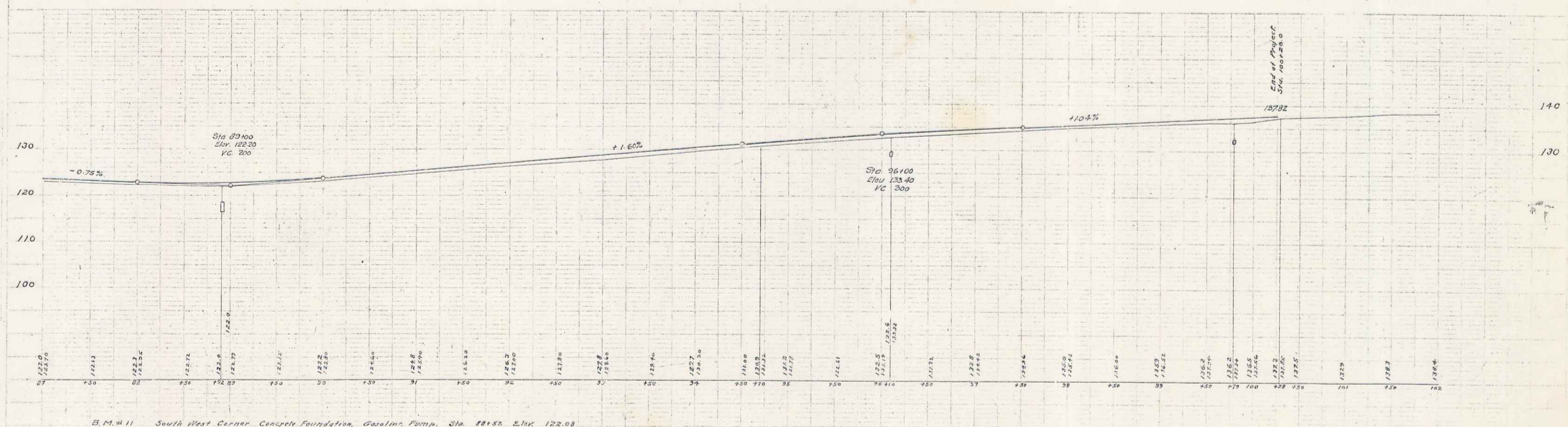
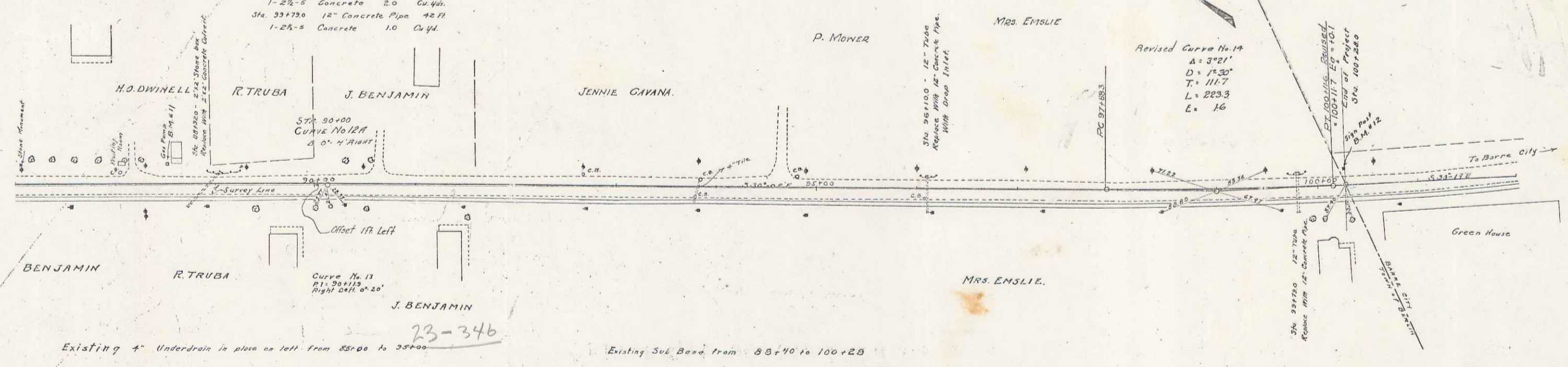


B.M. #3 Spike in Elm Tree, Left of Road. Sta. 72+07. Elev. 112.07
 B.M. #10 Spike in Elm Tree, Left of Road. Sta. 78+92. Elev. 114.93

Series F No. 56A Fiscal
 Sheet 7 of 9

GUARD RAIL REQUIRED ON LEFT	NEW CULVERTS REQUIRED	SUB BASE REQUIRED
Sta. 85180.0 to 85184.0 Length 24 ft	Sta. 88125.0 2x2 Concrete Culvert	Sta. 87100 to 88110 Length 110 ft
" 85184.0 to 85188.0 " 24 "	1-2-4 Concrete 3.4 Cu Yd.	
" 85188.0 to 85192.0 " 24 "	1-2-5 " 11.0 "	
" 85192.0 to 85196.0 " 24 "	Sta. 86100 12" Concrete Pipe 38 ft	
TOTAL THIS SHEET 72 ft	With Drop Inlet	
	1-2-5 Concrete 2.0 Cu Yd.	
	Sta. 851750 12" Concrete Pipe 42 ft	
	1-2-5 Concrete 1.0 Cu Yd.	

FD No.	STATE	FD No.	DATE	DATE	DATE
9	VT	56A			



B.M. #11 South West Corner Concrete Foundation, Gasolin. Pump. Sta. 88152 Elev. 122.08
 B.M. #12 Spike in City Line Post, Left of Sta. 100+27 Elev. 136.82

Series 1 resurfaced
 Sheet 2 of 2

4