

GUARD RAIL REQUIRED ON LEFT.
 Sta. 73+70 to 73+71 Length 24 ft
 Sta. 81+92 to 81+66 " 24 "

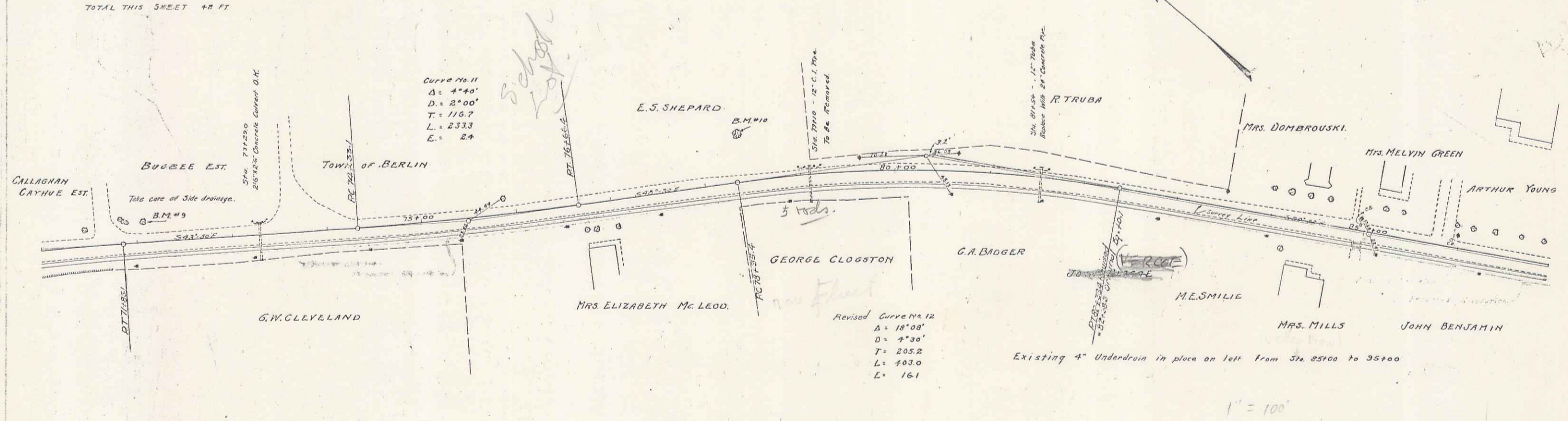
NEW CULVERTS REQUIRED.
 Sta. 81+50 - 24" Concrete Pipe 44 ft
 1-24" Concrete 1.5 Cuffs.

SUB BASE REQUIRED.
 Sta. 77+25 to 87+00 Length 975 ft

STANDARD UNDERDRAIN.
 Sta. 73+29 to 73+10 Length 591 ft

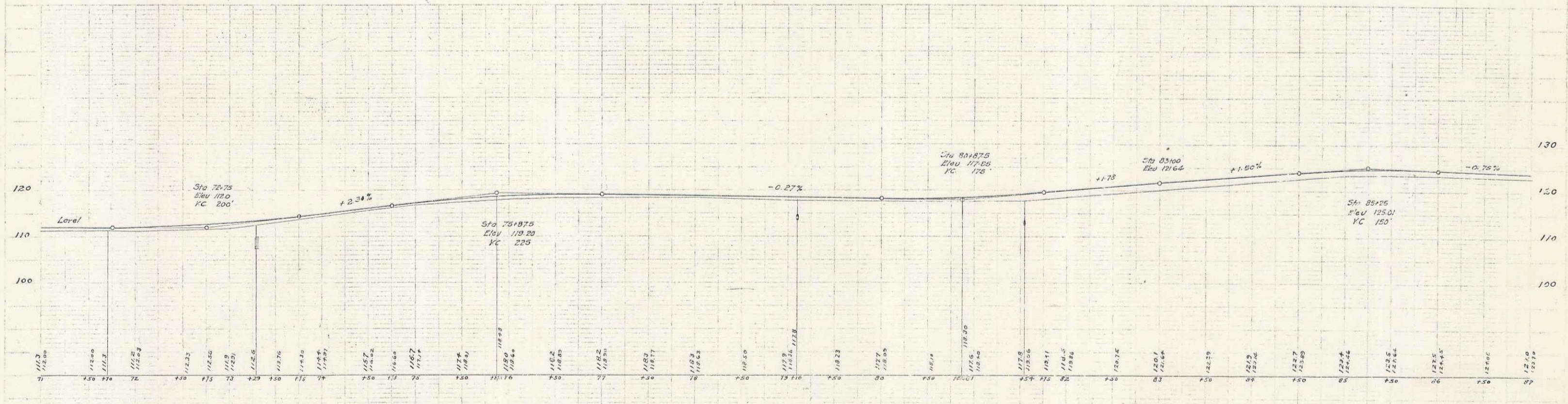
TOTAL THIS SHEET 42 FT

FORMA	STATE	FED. NO.	FISCAL YEAR	SHEET NO.	TOTAL SHEETS
3	VT	56A		7	9



Curve No. 11
 $\Delta = 44^\circ$
 $D = 2^\circ 00'$
 $T = 116.7$
 $L = 233.3$
 $E = 24$

Revised Curve No. 12
 $\Delta = 18^\circ 08'$
 $D = 4^\circ 30'$
 $T = 205.2$
 $L = 403.0$
 $E = 161$



B.M. #3 Spike in Elm Tree, Left of Road. Sta. 72+07. Elev. 112.07
 B.M. #10 Spike in Elm Tree, Left of Road. Sta. 78+92. Elev. 114.93