

E.F. WALL & ASSOCIATES

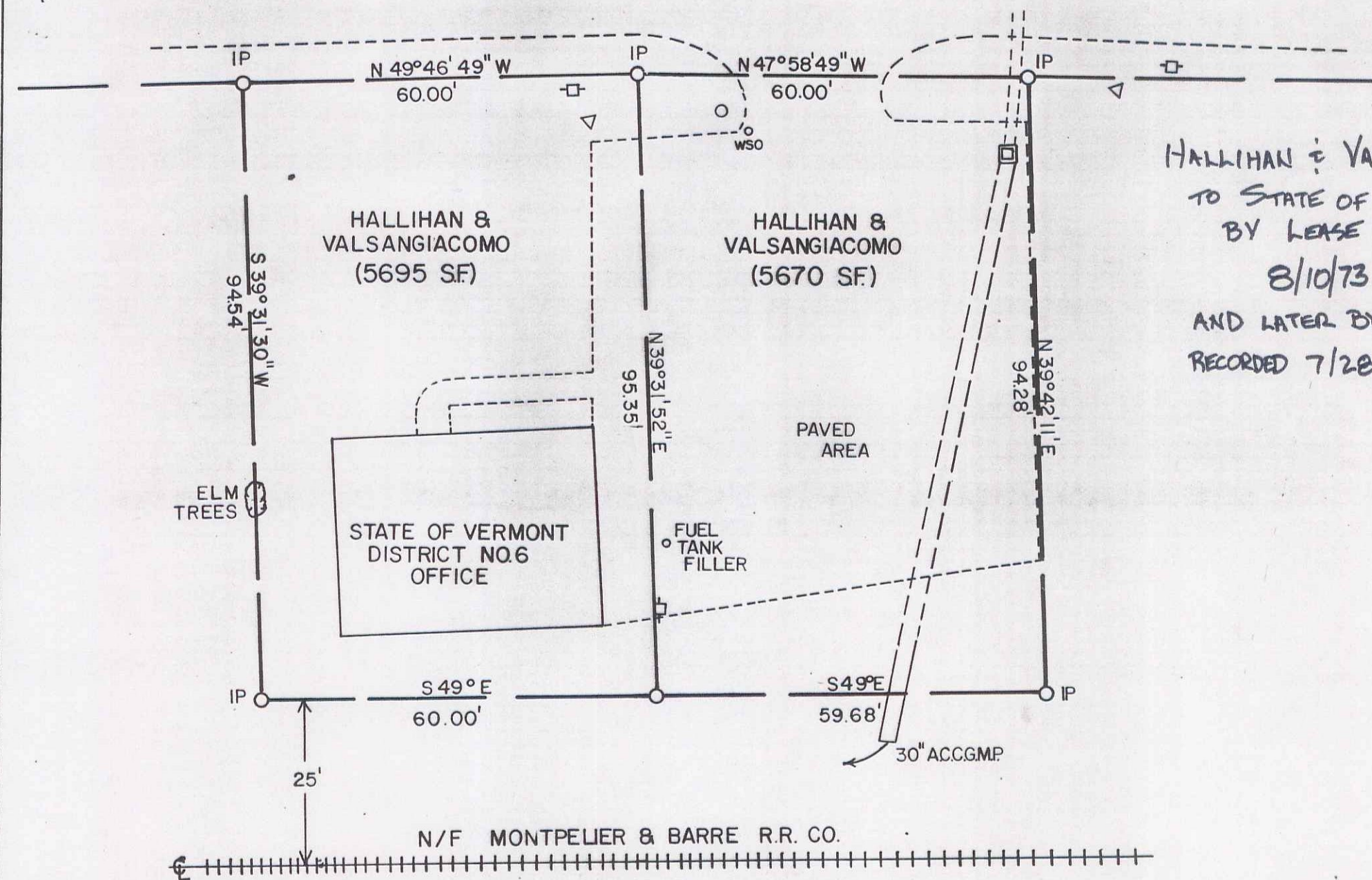
AMBASSADOR INS. CO.

← TO MONTPELIER CITY

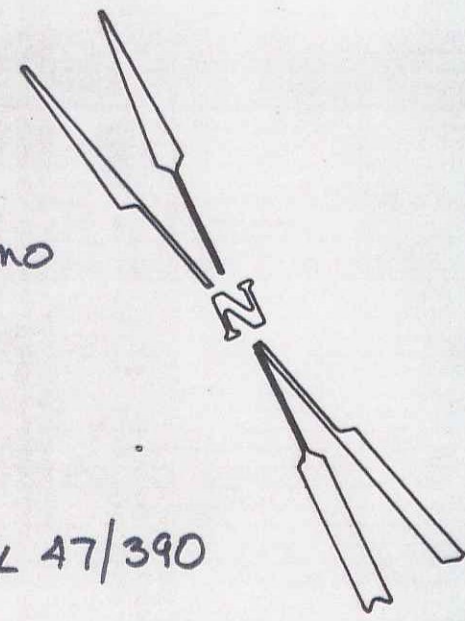
US 302

TO BARRE CITY

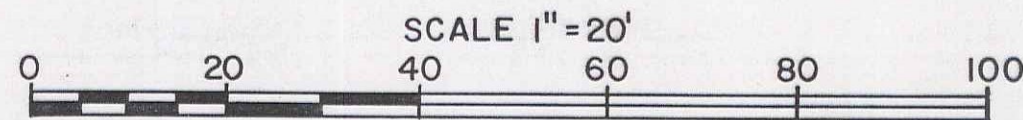
BERLIN TOWN LINE 0.56 MI.



HALLIHAN & VALSANGIACO  
 TO STATE OF VERMONT  
 BY LEASE EXECUTED  
 8/10/73  
 AND LATER BY WD  
 RECORDED 7/28/81 IN BK 47/390



IP - IRON PIN



(50)		
SURVEYED BY RAYMOND CYR 5		
STATE OF VERMONT AGENCY OF TRANSPORTATION		
TOWN OF BERLIN		
PROJECT HIGHWAY DISTRICT NO. 6		
APPROX. SCALE 1" = 20'	DATE 11-7-80	DRAWN BY F.J. MALNATI