

INDEX OF SHEETS

- 1 Title Sheet
- 2 Typical Sheet
- 3 Drainage & Quantity Sheet
- 4 Blank
- 5-6 Plan Sheets
- 7-10 Culvert & Cross Sections
- 11 Cross Sections
- 12 Signal Plans & Detail
- 13 B-16 Division Island & Storage Lanes
- 14 B-71 Commercial Drives
- 15 C-1 Curb
- 16 D-3 Curb Drains
- 17 D-11 Gates, D.I.'s & Frames
- 18 Blank
- 19 E-1 Federal Aid Construction Ident Signs
- 20 E-6 On-Project Construction Signs
- 21 E-12 US Route Markers & Aux. Signs
- 22 E-13 State Route Markers & Aux. Signs
- 23 Blank
- 24 E-33 Traffic Control Signals

BERLIN TOPICS T 4303(4)  
 RECORD PLANS  
 MATERIALS  
 BITUMINOUS CONCRETE PAVEMENT—COOLEY PLANT—  
 BERLIN, VT.  
 BITUMINOUS COLORED CONCRETE PAVEMENT—L.M. PIKE PLANT—BURLINGTON, VT.  
 CONCRETE CLASS B—A.G. ANDERSON CO., INC.—BERLIN, VT.  
 METAL PIPE CULVERT—NEW ENGLAND METAL CULVERT CO.—WHITE RIVER JCT., VT.  
 GUARD RAIL—GRISWOLD FENCE CO., INC.—ESSEX JCT., VT.  
 12/14/71 TRAFFIC LIGHTS & SIGNS—STATE HIGHWAY SIGN SHOP STOCK  
 4/20/71  
 12/18/71 WORK DONE BY HIGHWAY DISTRICT NO. 6 FORCES  
 12/16/71 RESIDENT ENGINEER—CHARLES J. CROSSETT.  
 12/16/71 INSPECTOR—RAYMOND J. CYR.  
 12/16/71 RECORD PLANS—A.G. SPIELE.

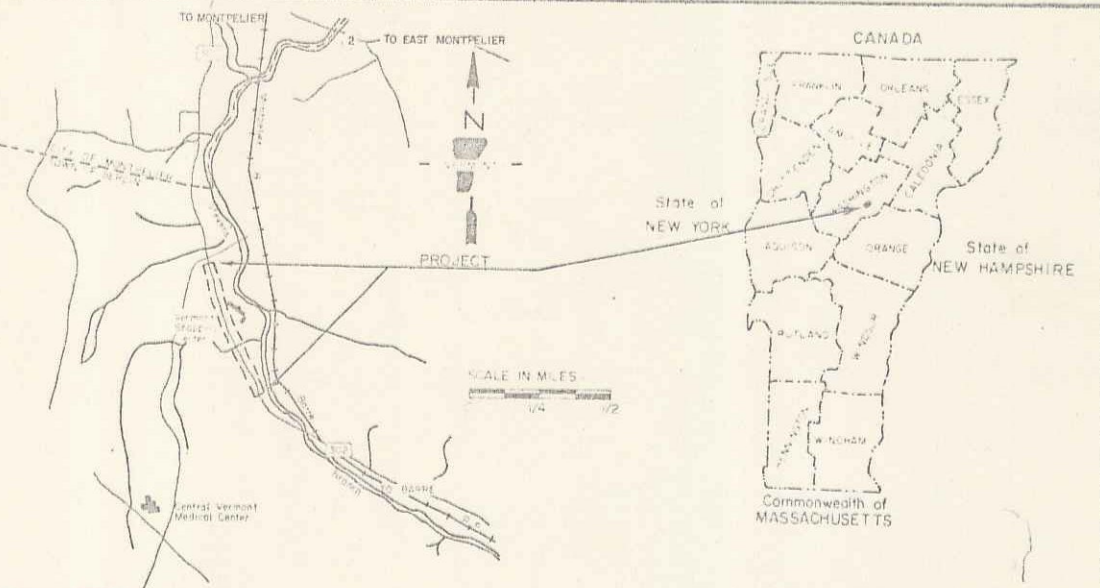
STATE OF VERMONT  
 DEPARTMENT OF HIGHWAYS



PROPOSED IMPROVEMENT  
 TOWN OF BERLIN  
 COUNTY OF WASHINGTON

BARRE-MONTPELIER ROAD  
 TRAFFIC OPERATION PROGRAM TO  
 INCREASE CAPACITY AND SAFETY

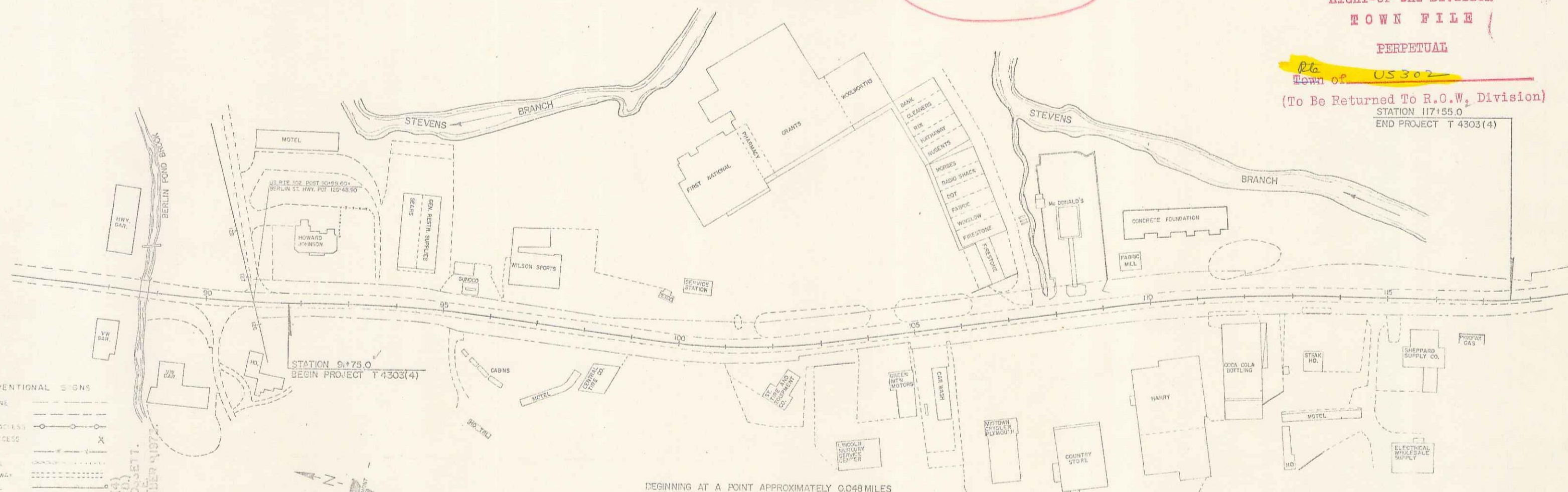
Pin # 99R540



RIGHT-OF-WAY DIVISION  
 TOWN FILE

PERPETUAL

R.G.  
 Town of US 302  
 (To Be Returned To R.O.W. Division)  
 STATION 117+55.0  
 END PROJECT T 4303(4)



- CONVENTIONAL SIGNS
- COUNTY LINE
  - TOWN LINE
  - POINT OF ACCESS
  - STONE WALL
  - TRAVELLED WAY
  - GUARD RAIL
  - RAILROAD
  - SURVEY LINE
  - SUBVERT
  - POWER POLE
  - TELEPHONE POLE
  - TREES
  - FA CONST IDENTIFICATION SIGNS
  - PROPERTY LINE
  - ROW TAKING LINE
  - SLOPE RIGHTS
  - TOP OF CUT
  - TOP OF SLOPE



BEGINNING AT A POINT APPROXIMATELY 0.048 MILES  
 SOUTHEASTERLY OF THE MONTPELIER-BERLIN  
 TOWN LINE AND EXTENDING IN A SOUTHEASTERLY  
 DIRECTION 0.489 MILES.  
 LENGTH OF ROADWAY 2,550 FEET 0.489 MILES  
 LENGTH OF PROJECT 2,580 FEET 0.489 MILES

TRAFFIC DATA  
 1972 ADT 13,500  
 1955 ADT 10,220

These plans are subject to such engineering  
 changes as may be required by the Federal Highway  
 Administration or the Chief Engineer.  
 Construction is to be carried on in accordance  
 with these plans and the Standard Specifications  
 for Highway and Bridge Construction dated  
 January 3, 1972 as approved by the Federal Highway  
 Administration on December 23, 1971 for use on  
 this project, including all subsequent revisions and  
 such revised specification and special provisions as  
 are incorporated in these plans.

SUBMITTED BY ORDER OF THE STATE HIGHWAY BOARD

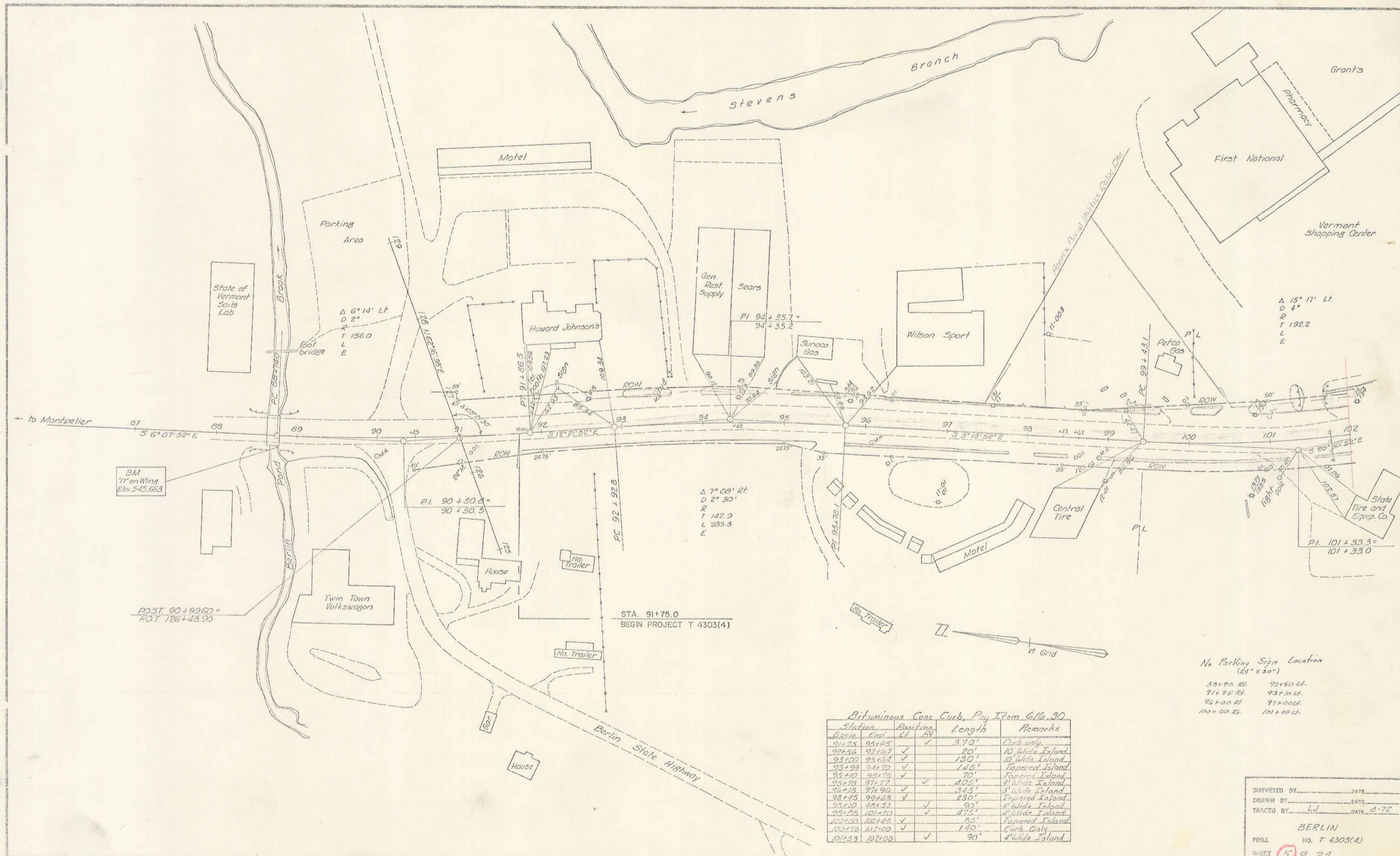
APPROVED: *Chas. J. Crossett* DATE: *1/1/73*  
 CHIEF ENGINEER

DEPARTMENT OF TRANSPORTATION  
 FEDERAL HIGHWAY ADMINISTRATION

APPROVED: \_\_\_\_\_ DATE: \_\_\_\_\_  
 DIVISION ENGINEER

BERLIN TOPICS  
 PROJECT T 4303(4)

SHEET 1 OF 24 SHEETS



State of Vermont Soils Lab  
 Parking Area  
 $\Delta 6^{\circ} 14' \text{ Lt}$   
 $D 2'$   
 $R 156.0$   
 $L$   
 $E$

BM  
 11" on Wing  
 Elev 545.663

POST 90+99.62  
 20' 726+48.50

Howard Johnson's  
 $PI 91+30.0$   
 $90+30.5$

Sears  
 $PI 94+35.7$   
 $94+35.2$

$\Delta 7^{\circ} 08' \text{ Rt}$   
 $D 2' 30"$   
 $R$   
 $T 142.9$   
 $L 285.3$   
 $E$

First National  
 $\Delta 15^{\circ} 17' \text{ Lt}$   
 $D 4'$   
 $R$   
 $T 192.2$   
 $L$   
 $E$

State Tire and Equip. Co.  
 $PI 101+35.5$   
 $101+33.0$

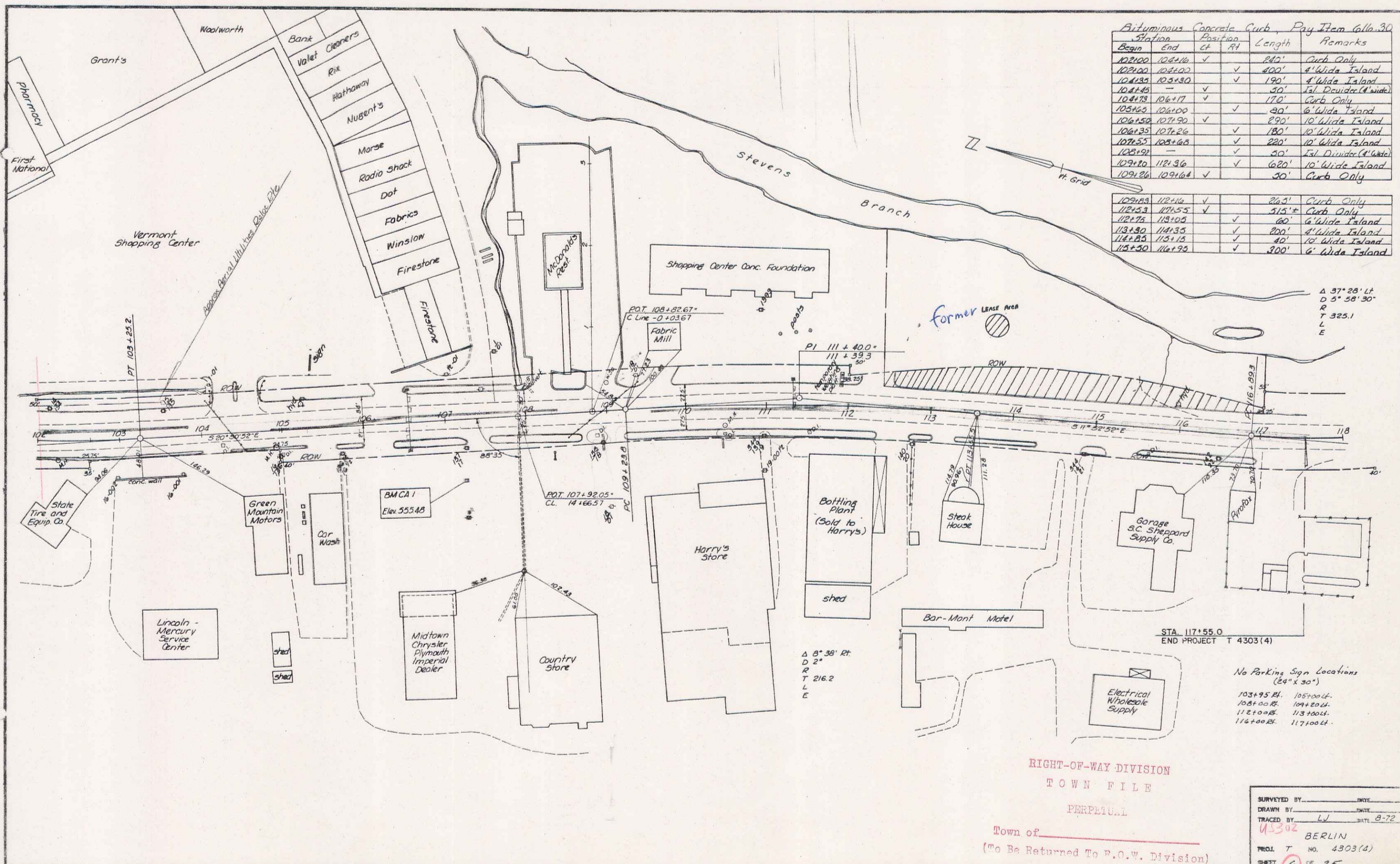
STA. 91+75.0  
 BEGIN PROJECT T 4303(4)

Asphalt Concrete Curb, Pay Item 616.30

Station	Position	Length	Remarks
87+00	61	3.70'	Curb only
87+25	95+65	✓	
87+50	92+67	✓	10' Wide Island
88+00	95+67	✓	130'
88+50	94+70	✓	Tapered Island
89+00	94+70	✓	70'
89+50	94+72	✓	4' Wide Island
90+00	97+90	✓	345'
90+50	99+68	✓	280'
91+00	98+52	✓	4' Wide Island
91+50	100+50	✓	4' Wide Island
92+00	100+48	✓	Tapered Island
92+50	102+00	✓	Curb Only
101+50	102+00	✓	90'

No Parking Sign Location  
 (24" x 50")  
 31+90 Rt. 90+150 Lt.  
 91+75 Rt. 93+10 Lt.  
 95+00 Rt. 97+00 Lt.  
 100+00 Rt. 101+00 Lt.

SURVEYED BY: \_\_\_\_\_ DATE: \_\_\_\_\_  
 DRAWN BY: LU DATE: 3-72  
 TRACED BY: \_\_\_\_\_ DATE: \_\_\_\_\_  
 BERLIN  
 PROJ. NO. T 4303(4)  
 SHEET 5 OF 21  
 0-7



Autuminous Concrete Curb, Pay Item 606.30

Station	End	Position	Length	Remarks
102+00	102+16	✓	16'	Curb Only
102+00	102+00	✓	0'	4' Wide Island
102+35	103+30	✓	95'	4' Wide Island
102+45	-	✓	30'	Isl Divider (4' wide)
102+75	102+17	✓	42'	Curb Only
102+65	102+00	✓	35'	6' Wide Island
102+35	102+20	✓	15'	10' Wide Island
102+35	102+26	✓	9'	10' Wide Island
102+55	102+65	✓	10'	10' Wide Island
102+92	-	✓	30'	Isl Divider (4' wide)
102+20	112+36	✓	90'	10' Wide Island
102+26	102+64	✓	38'	Curb Only
102+83	102+16	✓	33'	Curb Only
102+53	102+55	✓	2'	Curb Only
102+75	103+05	✓	30'	6' Wide Island
103+30	104+35	✓	105'	4' Wide Island
104+35	105+15	✓	80'	10' Wide Island
105+30	106+30	✓	100'	6' Wide Island

Δ 37° 25' Lt  
 D 5° 58' 30"  
 R  
 T 325.1  
 L  
 E

Δ 8° 38' Rt  
 D 2'  
 R  
 T 216.2  
 L  
 E

No Parking Sign Locations  
 (24" x 30")  
 103+95 Rt. 105+00 Lt.  
 104+00 Rt. 104+20 Lt.  
 112+00 Rt. 113+00 Lt.  
 116+00 Rt. 117+00 Lt.

RIGHT-OF-WAY DIVISION  
 TOWN FILE  
 PERPETUAL  
 Town of \_\_\_\_\_  
 (To Be Returned To P.O.W. Division)

SURVEYED BY: \_\_\_\_\_ DATE: \_\_\_\_\_  
 DRAWN BY: \_\_\_\_\_ DATE: \_\_\_\_\_  
 TRACED BY: LW DATE: 8-72  
 11-302 BERLIN  
 PROJ T NO. 4303(4)  
 SHEET 6 OF 25  
 0-7