

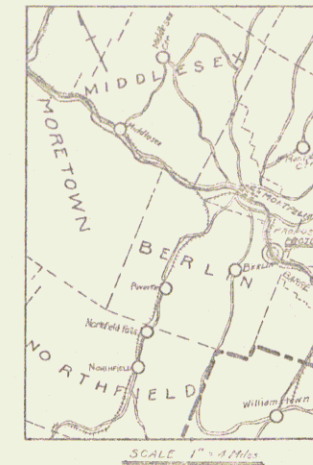
INDEX OF SHEETS

SHEET NO. 1	TITLE PAGE
" " 2	PLAN AND PROFILE
" " 3-5	SUPERSTRUCTURE DETAILS
" " 6-8	ABUTMENT DETAILS

FED. ROAD DIST. NO.	STATE	FED. AID PROJ. NO.	PROJECT NO.	SHEET NO.	TOTAL SHEETS
9	Vt.	56-C	1420	1	5

STATE OF VERMONT
STATE HIGHWAY DEPARTMENT

PLAN AND PROFILE OF PROPOSED
STATE HIGHWAY
FEDERAL AID PROJECT



TOWN OF BERLIN *Pin # 99R538*

MONTPELIER - BARRE ROAD

DODGE BRIDGE
OVER STEVENS BRANCH OF THE WINOOSKI RIVER

LOCATED 3.5 MILES SOUTH OF MONTPELIER

LENGTH 670 FEET = 0.012 MILES

RIGHT-OF-WAY DIVISION
TOWN FILE

PERPETUAL

Rt
Town of US 302

(To Be Returned To R.O.W. Division)

SCALES
PLAN 1" = 30 FEET
VERT 1" = 10 FEET
HORIZ 1" = 30 FEET
SECTIONS 1" = 5 FEET

LAYOUT
SEE SHEET 3

MP 0.65 - MP 1.04

APPROVED: *MAY 22 1920*

W. B. ...
CHIEF ENGINEER

SUBMITTED BY ORDER OF THE STATE HIGHWAY BOARD

May 22 1920

S. B. ...
COMMISSIONER OF HIGHWAYS

CONVENTIONAL SIGNS

- COUNTY LINE
- TOWN LINE
- FENCE LINE
- STONE WALL
- UNFENCED PROPERTY
- GUARD RAIL
- TRAVELED WAY
- RAILROAD
- RETAINING WALL
- CENTER LINE
- SURVEY LINE
- CULVERT
- DROP INLET
- TROLLEY POLE
- POWER POLE
- TELEPHONE POLE
- TREES
- HEDGE

- GROUND ELEVATION
- GRADE ELEVATION

CURVE DATA

- DEFLECTION ANGLE
- DEGREE OF CURVE
- RADIUS OF CURVE
- TANGENT DISTANCE
- LENGTH OF CURVE
- EXTERNAL DISTANCE
- POINT OF INTERSECTION
- POINT OF CURVE
- POINT OF TANGENT
- POINT ON TANGENT

THIS PROJECT TO BE CONSTRUCTED IN ACCORDANCE WITH
STANDARD SPECIFICATIONS ON FILE WITH THE U.S.
BUREAU OF PUBLIC ROADS

STRUCTURES ON THIS PROJECT TO BE CONSTRUCTED IN
ACCORDANCE WITH DETAILS GIVEN ON STANDARD
SPECIFICATION SHEETS SERIES Nos. S-17-18-19

DISTRICT No 9
BRIDGE No
BERLIN

RECOMMENDED

RECOMMENDED FOR APPROVAL

APPROVED

Project
SHEET 1 OF 5

1. PLAN AND PROFILE STA. 34+66 - 55+00
 2. STANDARD STRUCTURE SHEET 3-17
 3. TELEPHONE 8-17

STATE HIGHWAY DEPARTMENT

PLAN AND PROFILE OF PROPOSED
STATE HIGHWAY

FLOOD RELIEF PROJECT

TOWN OF BERLIN

MONTPELIER - BARRE ROAD

FROM STA 34+66 TO STA. 55+00 OF PROJECT 56 B

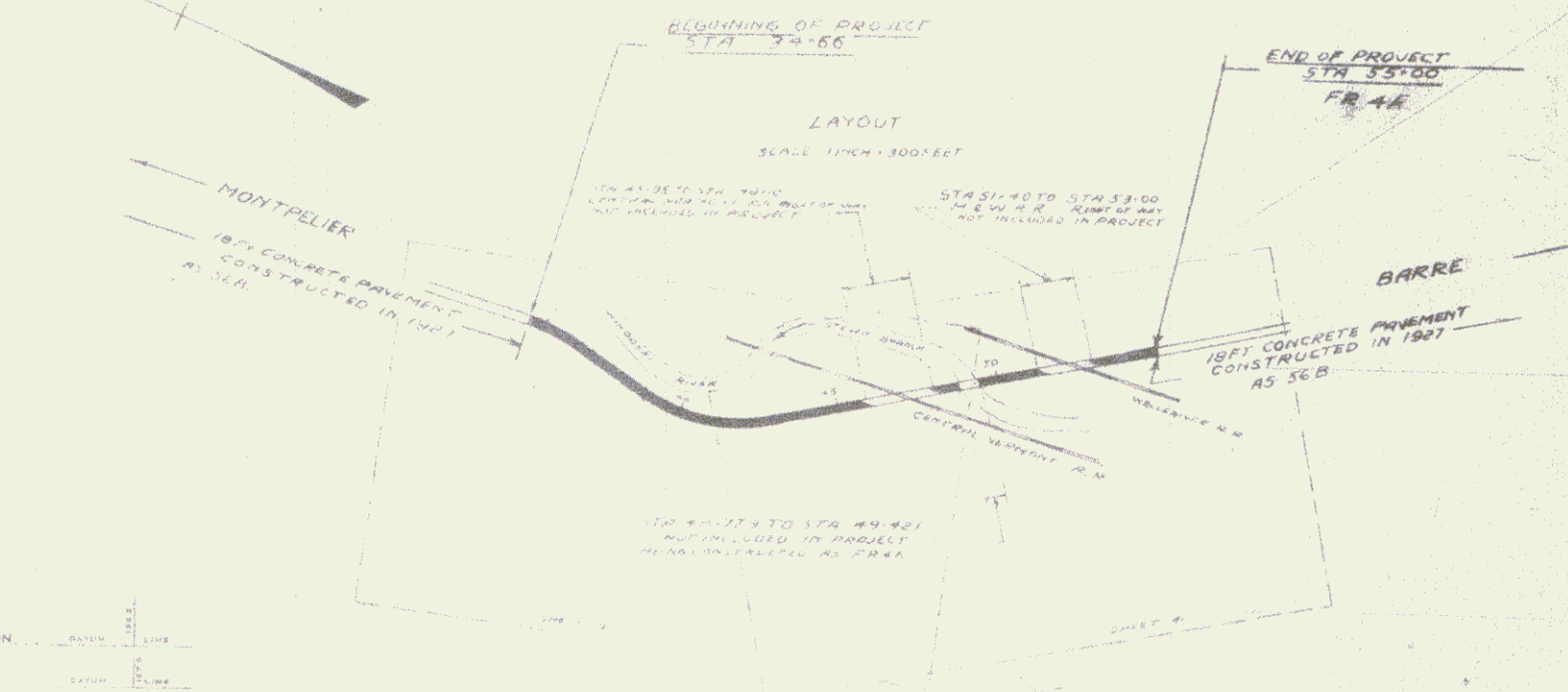
EXCLUDING F.R. 4 A (DODGE-BRIDGE)

LENGTH OF PROJECT 16,118 FT = 0.305 MILES

Rte US 302



SCALE 1 IN = 4 MILES



APPROVED: JULY 26, 1928

H. C. Sargent
CHIEF ENGINEER

SUBMITTED BY ORDER OF THE STATE HIGHWAY BOARD

JULY 26, 1928

R. B. Butler
COMMISSIONER OF HIGHWAYS

CONVENTIONAL SIGNS

GROUND ELEVATION	RAISED	LOWER
GRADE ELEVATION	EXPOSED	COVERED

CURVE DATA

DEFLECTION ANGLE	D
DEGREE OF CURVE	D
RADIUS OF CURVE	R
TANGENT DISTANCE	T
LENGTH OF CURVE	L
EXTERNAL DISTANCE	E
POINT OF INTERSECTION	P. I.
POINT OF CURVE	P. C.
POINT OF TANGENT	P. T.
POINT ON TANGENT	P. O. T.

SCALES

PLAN	1 INCH = 50 FEET
VERT	1 INCH = 10 FEET
CROSS SECTION	1 INCH = 5 FEET

THIS PROJECT TO BE CONSTRUCTED IN ACCORDANCE WITH STANDARD SPECIFICATIONS ON FILE WITH THE U.S. BUREAU OF PUBLIC ROADS AS APPROVED JULY 7 1926

ALL STRUCTURES ON THIS PROJECT TO BE CONSTRUCTED IN ACCORDANCE WITH DETAILS GIVEN BY STANDARD STRUCTURE SHEETS SERIES No. 17, 18

THESE PLANS SUBJECT TO SUCH REVISION AS MAY BE REQUIRED BY THE U.S. BUREAU OF PUBLIC ROADS OR THE CHIEF ENGINEER

RECOMMENDED

DISTRICT ENGINEER BUREAU OF PUBLIC ROADS

RECOMMENDED FOR APPROVAL

CHIEF ENGINEER BUREAU OF PUBLIC ROADS

APPROVED

DIRECTOR - BUREAU OF PUBLIC ROADS

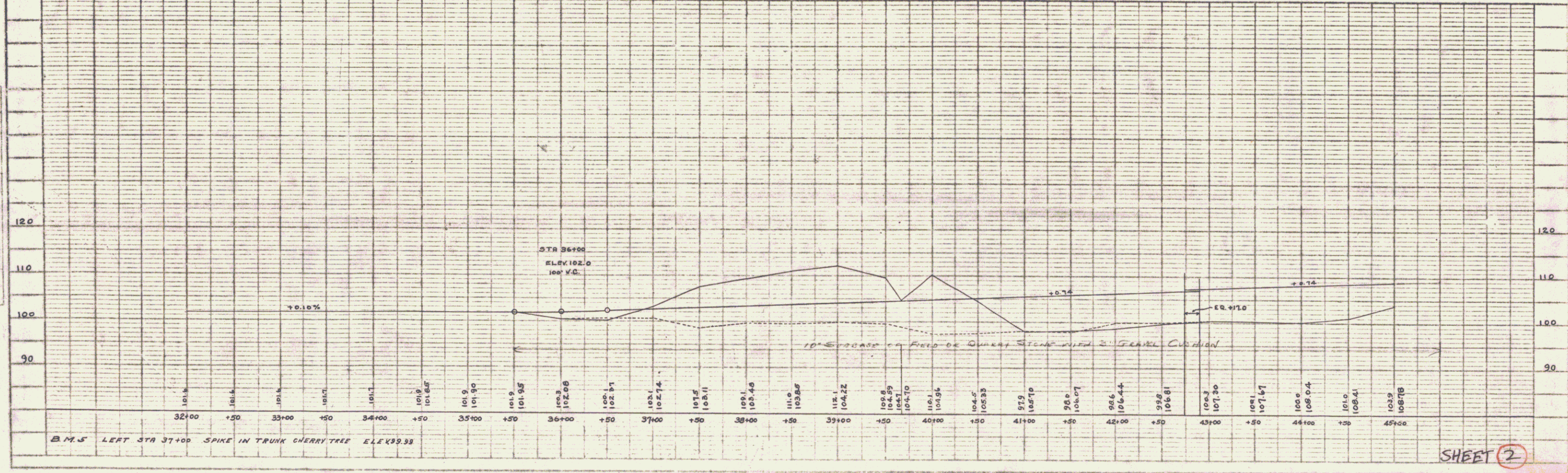
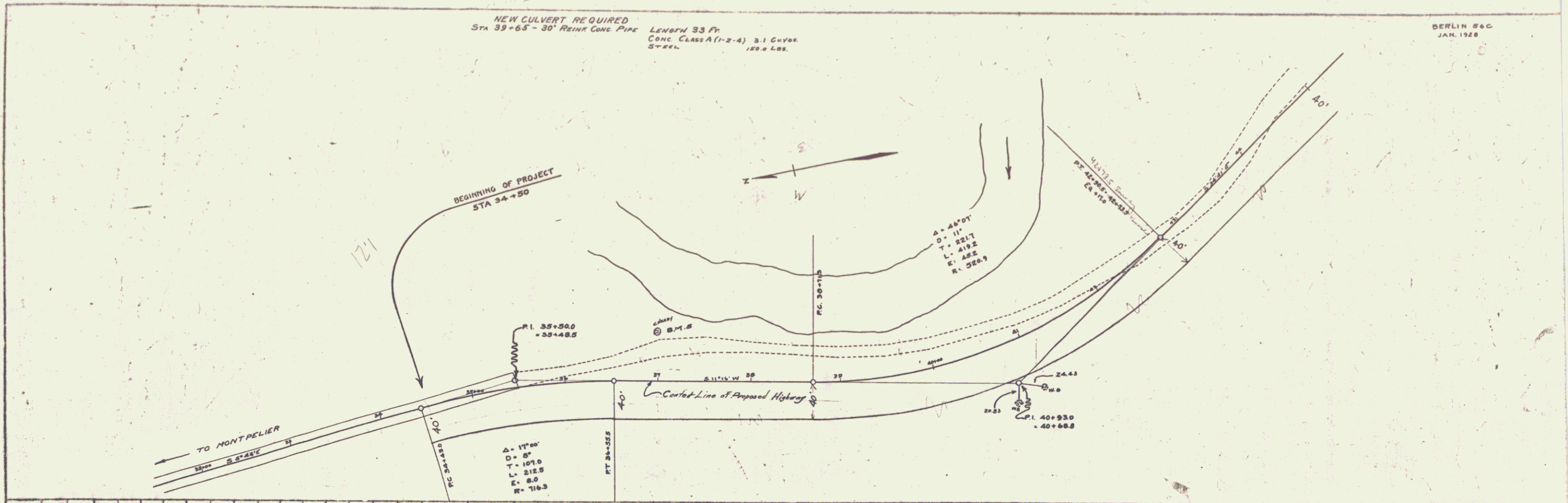
SERIES F. C. No. 47 FILED
SHEET 1 OF 8

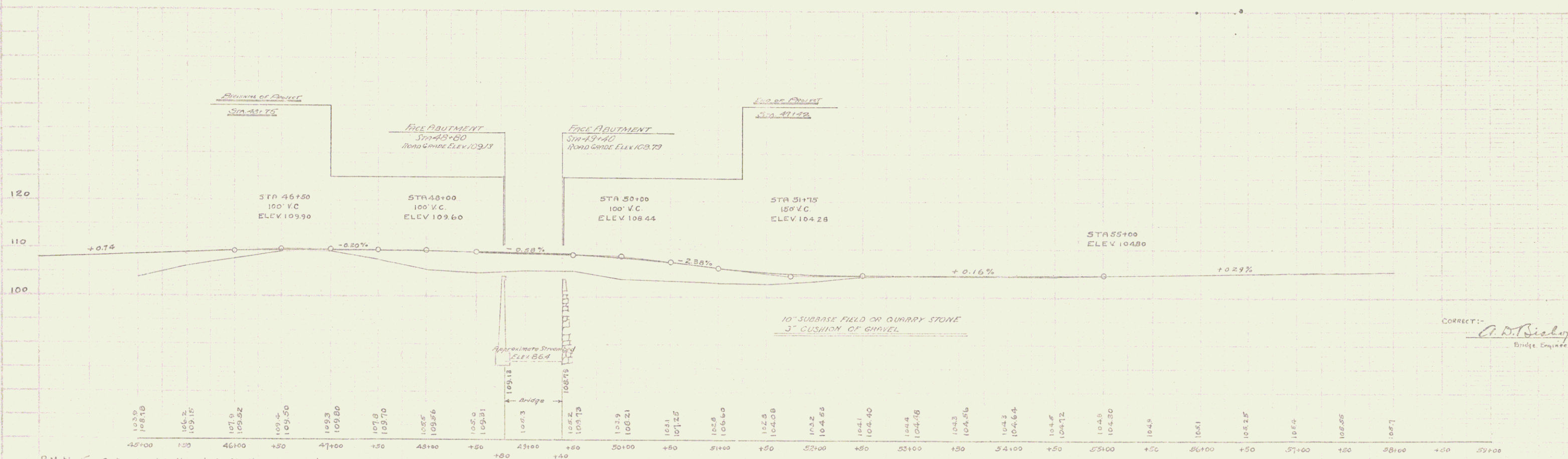
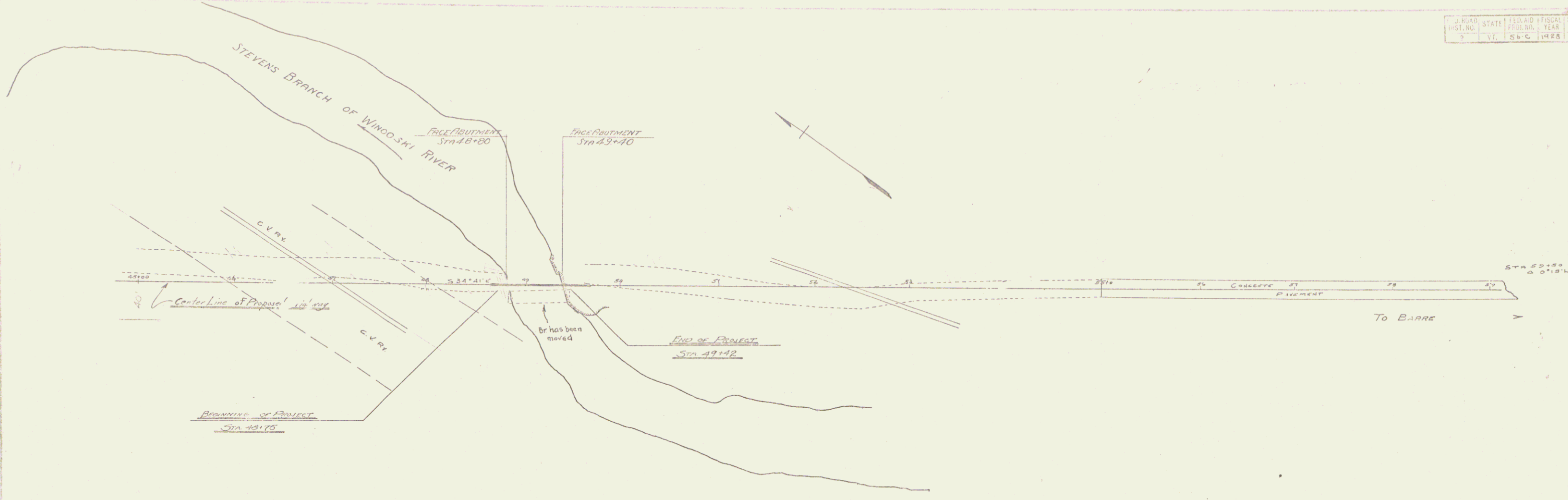
PLAN	DATE	BY
REV. 1	12-11	R. B. S.
REV. 2	1-11	R. B. S.
REV. 3	1-27	R. B. S.
REV. 4	1-27	R. B. S.
REV. 5	1-27	R. B. S.
REV. 6	1-27	R. B. S.
REV. 7	1-27	R. B. S.
REV. 8	1-27	R. B. S.
REV. 9	1-27	R. B. S.
REV. 10	1-27	R. B. S.
REV. 11	1-27	R. B. S.
REV. 12	1-27	R. B. S.
REV. 13	1-27	R. B. S.
REV. 14	1-27	R. B. S.
REV. 15	1-27	R. B. S.
REV. 16	1-27	R. B. S.
REV. 17	1-27	R. B. S.
REV. 18	1-27	R. B. S.
REV. 19	1-27	R. B. S.
REV. 20	1-27	R. B. S.

PROFILE	DATE	BY
REV. 1	12-11	R. B. S.
REV. 2	1-11	R. B. S.
REV. 3	1-27	R. B. S.
REV. 4	1-27	R. B. S.
REV. 5	1-27	R. B. S.
REV. 6	1-27	R. B. S.
REV. 7	1-27	R. B. S.
REV. 8	1-27	R. B. S.
REV. 9	1-27	R. B. S.
REV. 10	1-27	R. B. S.
REV. 11	1-27	R. B. S.
REV. 12	1-27	R. B. S.
REV. 13	1-27	R. B. S.
REV. 14	1-27	R. B. S.
REV. 15	1-27	R. B. S.
REV. 16	1-27	R. B. S.
REV. 17	1-27	R. B. S.
REV. 18	1-27	R. B. S.
REV. 19	1-27	R. B. S.
REV. 20	1-27	R. B. S.

NEW CULVERT REQUIRED
 STA 39+65 - 30' REIN. CONC. PIPE LENGTH 33 FT.
 CONC. CLASS A (1-2-4) 3.1 CY/YS. 150.0 LBS. 3" REEL.

BERLIN 560
 JAN. 1928





BM No 5 Spike in 10" Outernet Left Sta 36+80 Elev. 99.49
 BM No 6 Spike in H-Elm Left Sta. 62+23 Elev. 110.06

CORRECTED:
A. D. Bishop
 Bridge Engineer

5

