

INDEX OF SHEETS

SHEET NO. 1	TITLE PAGE
2	TYPICAL CROSS-SECTION OF IMPROVEMENT 2 1/2" BITUMINOUS CONCRETE
3	PARKING AND WORKING TABLES
4	QUANTITY SHEET (FURNISH)
5	QUANTITY SHEET (CONTRACT)
6-8	EARTHWORK SHEETS
9-15	PLAN AND PROFILE SHEETS
16	CONSTRUCTION DETAILS (DRAINAGE)
17	CONSTRUCTION DETAILS (DITCHES)
18	CONSTRUCTION DETAILS (D2 (TYPICAL GRADING))
19	CONSTRUCTION DETAILS (D4 (GRANITE CURB))
20	STANDARD STRUCTURE SHEET S-40 (BARRICADES, SIGNS & LIGHTS)
21	STANDARD STRUCTURE SHEET S-45-48 (ROAD RAIL)
22	STANDARD STRUCTURE SHEET S-47-48 (DRAIN INLETS)
23	STANDARD STRUCTURE SHEET S-55-48 (PRECAST CONCRETE INLETS)
24	CROSS SECTIONS

STANDARD STRUCTURE SHEET APPROVED BY THE CHIEF ENGINEER, VERMONT STATE DEPARTMENT OF HIGHWAYS, 5-40 JUNE 10, 1950

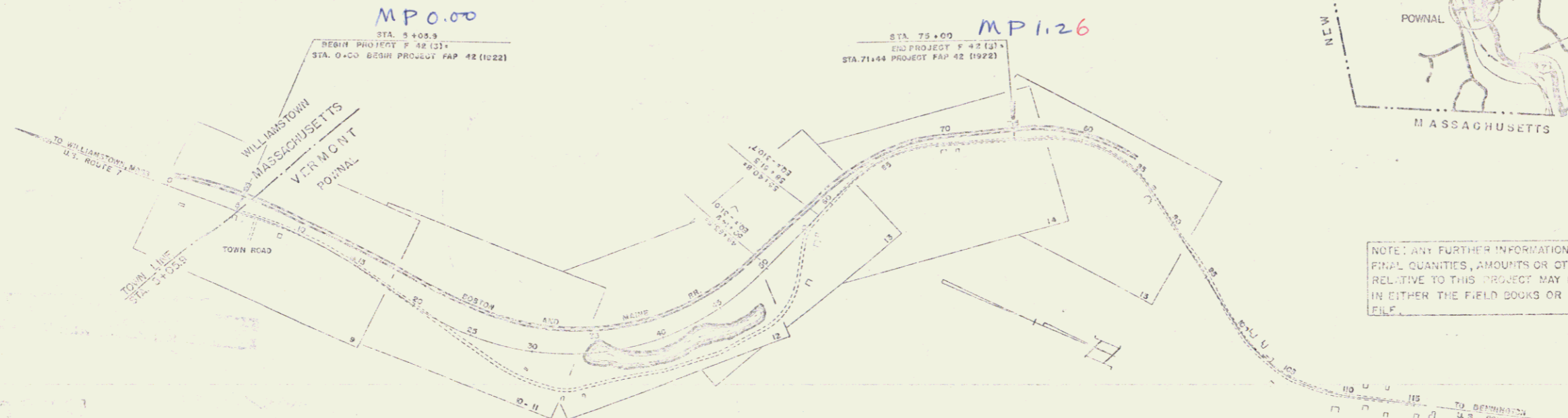
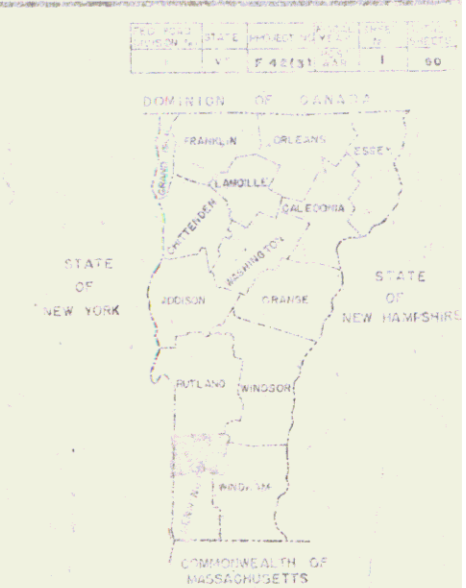
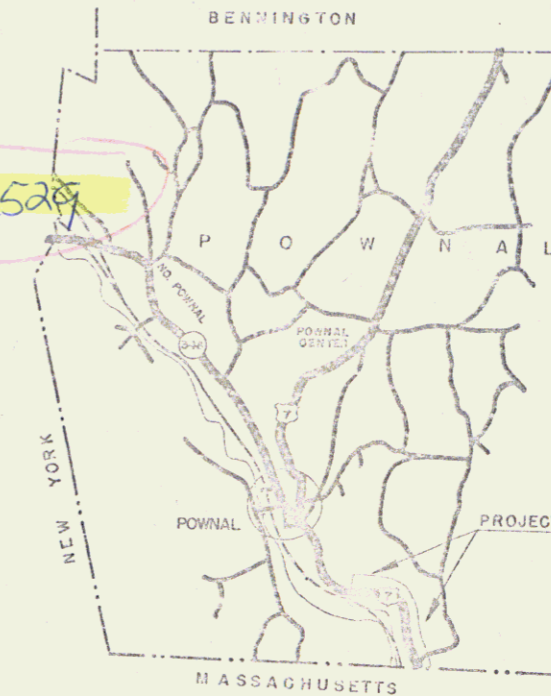
STATE OF VERMONT  
DEPARTMENT OF HIGHWAYS

PROPOSED IMPROVEMENT

FEDERAL PROJECT  
**TOWN OF POWNAL** Pin #99R528  
COUNTY OF BENNINGTON  
**U.S. ROUTE 7**

WILLIAMSTOWN MASS.-BENNINGTON ROAD

BEGINNING AT THE MASSACHUSETTS-VERMONT STATE LINE  
AND EXTENDING NORTHERLY 6,652.4 FEET.  
LENGTH OF PROJECT 6,652.4 FT. = 1.26 MILES



NOTE: ANY FURTHER INFORMATION CONCERNING FINAL QUANTITIES, AMOUNTS OR OTHER DETAILS RELATIVE TO THIS PROJECT MAY BE FOUND IN EITHER THE FIELD BOOKS OR THE ESTIMATE FILE.

US 7

PROJECT NAME AND NUMBER		TYPE	PAVEMENT AREA
POWNAL F-42 (3)		BIT. CONC. PAV.	19,500
RECORD PLANS MATERIALS			
SUB-BASE OF GRAVEL	LOCAL, HARTE PIT	T&P	SOCONY VACUUM, E. PROVIDENCE, R.I.
SUB-BASE OF CR GRAVEL	LOCAL, HINMAN	R.C.P.	VERMONT CONC. PIPE CORR. WINDSOR, VT.
STAB. GRAVEL BASE	HINMAN HOT MIX PLANT	ACCGMP	NEW ENGLAND METAL PIPE CO. PALMER, MASS.
BITUMINOUS CONCRETE	HINMAN HOT MIX PL.	C.G. RAIL CABLE	AM STEEL WIRE CO. N. HAVEN, C.
ASPHALT	SOCONY VACUUM, E. PROVIDENCE, R.I.	GRANITE CURB	CHEN W. FORD, MASS.
COORDINATOR	W.H. HINMAN, INC.	CONTRACT DATED	AUG. 6, 1952
RES. ENGINEER	THOMAS L. DUDLEY	CONTRACT STARTED	AUGUST 8, 1952
INSPECTOR	ROBERT A. VENTURA	CONTRACT COMPLETED	JULY 7, 1953
RECORD PLANS BY	T.L. DUDLEY, J.M. BURTON	CONTRACT ACCEPTED	PROGRESS

RIGHT-OF-WAY DIVISION  
TOWN FILE  
PERPETUAL  
Town of US 7  
(To Be Returned To R.O.W. Division)

GROUND ELEVATION	SCALE	1" = 10'
GRADE ELEVATION	SCALE	1" = 10'
CURVE DATA	SCALE	1" = 10'
DIRECTION OF ANGLE	A	
LENGTH OF CURVE	B	
CHORD OF CURVE	C	
HEIGHT OF CURVE	D	
EXTERNAL DISTANCE	E	
PI	F	
EXTERNAL DISTANCE	G	
PI	H	
EXTERNAL DISTANCE	I	
PI	J	
EXTERNAL DISTANCE	K	
PI	L	
EXTERNAL DISTANCE	M	
PI	N	
EXTERNAL DISTANCE	O	
PI	P	
EXTERNAL DISTANCE	Q	
PI	R	
EXTERNAL DISTANCE	S	
PI	T	
EXTERNAL DISTANCE	U	
PI	V	
EXTERNAL DISTANCE	W	
PI	X	
EXTERNAL DISTANCE	Y	
PI	Z	

THESE PLANS ARE SUBJECT TO SUCH REVISIONS AS MAY BE NECESSARY IN THE JUDGMENT OF THE BUREAU OF PUBLIC ROADS OR THE CONTRACTOR OR HIS SURETY.

CONSTRUCTION IS TO BE CARRIED ON IN ACCORDANCE WITH THE SPECIFICATIONS, STANDARD PLANS AND SPECIAL PROVISIONS OF THE VERMONT STATE DEPARTMENT OF HIGHWAYS, 1950 EDITION, AND THE SPECIAL PROVISIONS OF THE CONTRACT AND SPECIAL PROVISIONS OF THE CONTRACT.

DEPARTMENT OF COMMERCE  
BUREAU OF PUBLIC ROADS

RECORDED FOR APPROVAL

FILE NO. 42(3)

1

STEARNS R. JENKINS

US 7

When the Commonwealth of Massachusetts makes improvement at this location this center line will be used.

Proposed Rev Curve  
 Δ 2°00' LT (Approx)  
 D 1"  
 R 5729.7  
 T 100.0  
 L 200.0  
 E 0.9

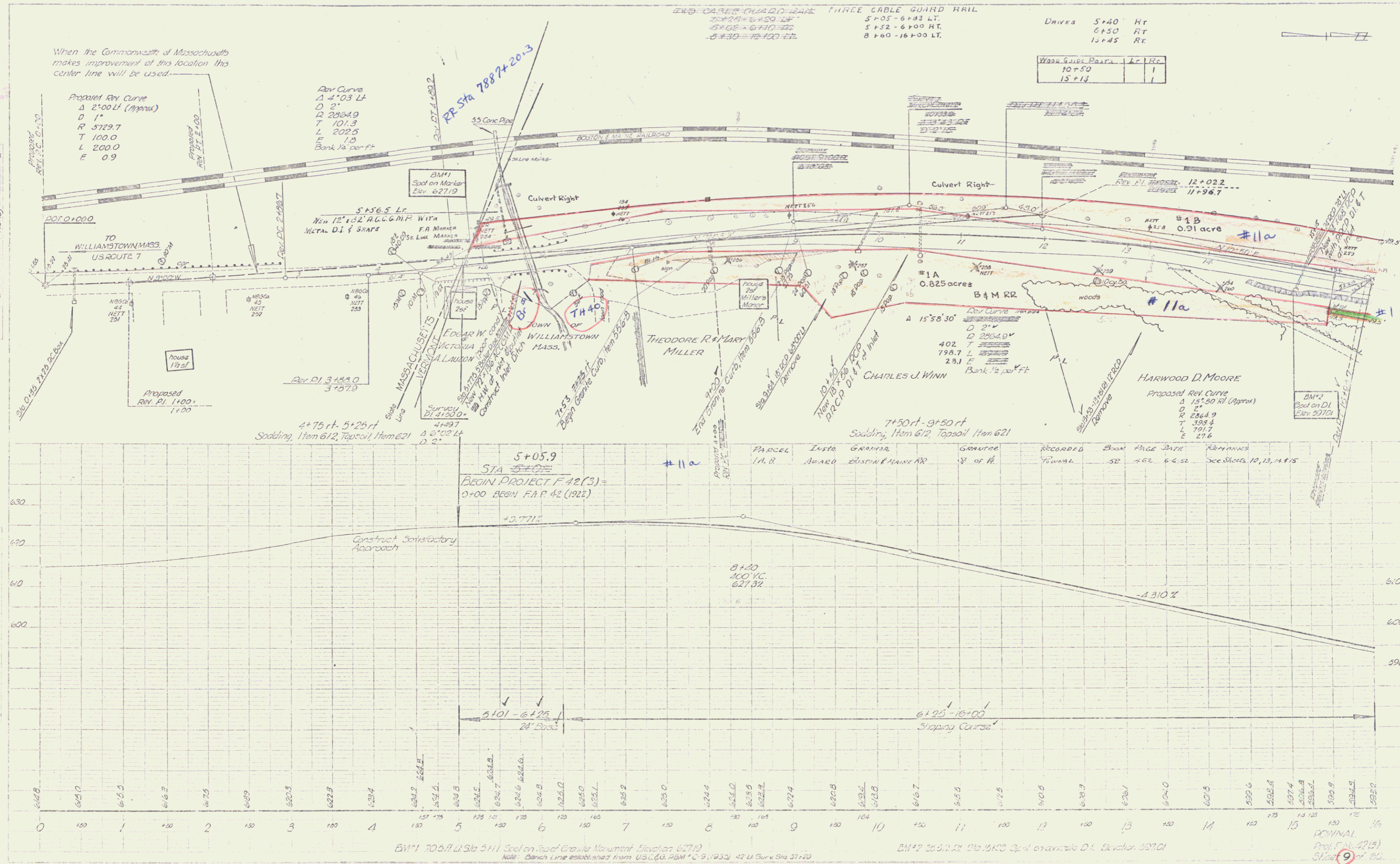
Rev Curve  
 Δ 4°03' LT  
 D 2"  
 R 2804.0  
 T 101.3  
 L 202.5  
 E 1.0  
 Bank 1/2 cut-ft

IN-CASE CHAD-D-RAE THREE CABLE GUARD RAIL  
 5+05 - 6+83 LT.  
 5+05 - 6+10 LT.  
 5+30 - 12+00 LT.

Drives 5+40 RT  
 6+50 RT  
 12+45 RT

Width	Sub	Dist	LC	RT
10+50				1
15+13				1

1750  
 1.3  
 1.4  
 1.5  
 1.6  
 1.7  
 1.8  
 1.9  
 2.0  
 2.1  
 2.2  
 2.3  
 2.4  
 2.5  
 2.6  
 2.7  
 2.8  
 2.9  
 3.0  
 3.1  
 3.2  
 3.3  
 3.4  
 3.5  
 3.6  
 3.7  
 3.8  
 3.9  
 4.0  
 4.1  
 4.2  
 4.3  
 4.4  
 4.5  
 4.6  
 4.7  
 4.8  
 4.9  
 5.0  
 5.1  
 5.2  
 5.3  
 5.4  
 5.5  
 5.6  
 5.7  
 5.8  
 5.9  
 6.0  
 6.1  
 6.2  
 6.3  
 6.4  
 6.5  
 6.6  
 6.7  
 6.8  
 6.9  
 7.0  
 7.1  
 7.2  
 7.3  
 7.4  
 7.5  
 7.6  
 7.7  
 7.8  
 7.9  
 8.0  
 8.1  
 8.2  
 8.3  
 8.4  
 8.5  
 8.6  
 8.7  
 8.8  
 8.9  
 9.0  
 9.1  
 9.2  
 9.3  
 9.4  
 9.5  
 9.6  
 9.7  
 9.8  
 9.9  
 10.0  
 10.1  
 10.2  
 10.3  
 10.4  
 10.5  
 10.6  
 10.7  
 10.8  
 10.9  
 11.0  
 11.1  
 11.2  
 11.3  
 11.4  
 11.5  
 11.6  
 11.7  
 11.8  
 11.9  
 12.0  
 12.1  
 12.2  
 12.3  
 12.4  
 12.5  
 12.6  
 12.7  
 12.8  
 12.9  
 13.0  
 13.1  
 13.2  
 13.3  
 13.4  
 13.5  
 13.6  
 13.7  
 13.8  
 13.9  
 14.0  
 14.1  
 14.2  
 14.3  
 14.4  
 14.5  
 14.6  
 14.7  
 14.8  
 14.9  
 15.0  
 15.1  
 15.2  
 15.3  
 15.4  
 15.5  
 15.6  
 15.7  
 15.8  
 15.9  
 16.0  
 16.1  
 16.2  
 16.3  
 16.4  
 16.5  
 16.6  
 16.7  
 16.8  
 16.9  
 17.0  
 17.1  
 17.2  
 17.3  
 17.4  
 17.5  
 17.6  
 17.7  
 17.8  
 17.9  
 18.0  
 18.1  
 18.2  
 18.3  
 18.4  
 18.5  
 18.6  
 18.7  
 18.8  
 18.9  
 19.0  
 19.1  
 19.2  
 19.3  
 19.4  
 19.5  
 19.6  
 19.7  
 19.8  
 19.9  
 20.0  
 20.1  
 20.2  
 20.3  
 20.4  
 20.5  
 20.6  
 20.7  
 20.8  
 20.9  
 21.0  
 21.1  
 21.2  
 21.3  
 21.4  
 21.5  
 21.6  
 21.7  
 21.8  
 21.9  
 22.0  
 22.1  
 22.2  
 22.3  
 22.4  
 22.5  
 22.6  
 22.7  
 22.8  
 22.9  
 23.0  
 23.1  
 23.2  
 23.3  
 23.4  
 23.5  
 23.6  
 23.7  
 23.8  
 23.9  
 24.0  
 24.1  
 24.2  
 24.3  
 24.4  
 24.5  
 24.6  
 24.7  
 24.8  
 24.9  
 25.0  
 25.1  
 25.2  
 25.3  
 25.4  
 25.5  
 25.6  
 25.7  
 25.8  
 25.9  
 26.0  
 26.1  
 26.2  
 26.3  
 26.4  
 26.5  
 26.6  
 26.7  
 26.8  
 26.9  
 27.0  
 27.1  
 27.2  
 27.3  
 27.4  
 27.5  
 27.6  
 27.7  
 27.8  
 27.9  
 28.0  
 28.1  
 28.2  
 28.3  
 28.4  
 28.5  
 28.6  
 28.7  
 28.8  
 28.9  
 29.0  
 29.1  
 29.2  
 29.3  
 29.4  
 29.5  
 29.6  
 29.7  
 29.8  
 29.9  
 30.0  
 30.1  
 30.2  
 30.3  
 30.4  
 30.5  
 30.6  
 30.7  
 30.8  
 30.9  
 31.0  
 31.1  
 31.2  
 31.3  
 31.4  
 31.5  
 31.6  
 31.7  
 31.8  
 31.9  
 32.0  
 32.1  
 32.2  
 32.3  
 32.4  
 32.5  
 32.6  
 32.7  
 32.8  
 32.9  
 33.0  
 33.1  
 33.2  
 33.3  
 33.4  
 33.5  
 33.6  
 33.7  
 33.8  
 33.9  
 34.0  
 34.1  
 34.2  
 34.3  
 34.4  
 34.5  
 34.6  
 34.7  
 34.8  
 34.9  
 35.0  
 35.1  
 35.2  
 35.3  
 35.4  
 35.5  
 35.6  
 35.7  
 35.8  
 35.9  
 36.0  
 36.1  
 36.2  
 36.3  
 36.4  
 36.5  
 36.6  
 36.7  
 36.8  
 36.9  
 37.0  
 37.1  
 37.2  
 37.3  
 37.4  
 37.5  
 37.6  
 37.7  
 37.8  
 37.9  
 38.0  
 38.1  
 38.2  
 38.3  
 38.4  
 38.5  
 38.6  
 38.7  
 38.8  
 38.9  
 39.0  
 39.1  
 39.2  
 39.3  
 39.4  
 39.5  
 39.6  
 39.7  
 39.8  
 39.9  
 40.0  
 40.1  
 40.2  
 40.3  
 40.4  
 40.5  
 40.6  
 40.7  
 40.8  
 40.9  
 41.0  
 41.1  
 41.2  
 41.3  
 41.4  
 41.5  
 41.6  
 41.7  
 41.8  
 41.9  
 42.0  
 42.1  
 42.2  
 42.3  
 42.4  
 42.5  
 42.6  
 42.7  
 42.8  
 42.9  
 43.0  
 43.1  
 43.2  
 43.3  
 43.4  
 43.5  
 43.6  
 43.7  
 43.8  
 43.9  
 44.0  
 44.1  
 44.2  
 44.3  
 44.4  
 44.5  
 44.6  
 44.7  
 44.8  
 44.9  
 45.0  
 45.1  
 45.2  
 45.3  
 45.4  
 45.5  
 45.6  
 45.7  
 45.8  
 45.9  
 46.0  
 46.1  
 46.2  
 46.3  
 46.4  
 46.5  
 46.6  
 46.7  
 46.8  
 46.9  
 47.0  
 47.1  
 47.2  
 47.3  
 47.4  
 47.5  
 47.6  
 47.7  
 47.8  
 47.9  
 48.0  
 48.1  
 48.2  
 48.3  
 48.4  
 48.5  
 48.6  
 48.7  
 48.8  
 48.9  
 49.0  
 49.1  
 49.2  
 49.3  
 49.4  
 49.5  
 49.6  
 49.7  
 49.8  
 49.9  
 50.0  
 50.1  
 50.2  
 50.3  
 50.4  
 50.5  
 50.6  
 50.7  
 50.8  
 50.9  
 51.0  
 51.1  
 51.2  
 51.3  
 51.4  
 51.5  
 51.6  
 51.7  
 51.8  
 51.9  
 52.0  
 52.1  
 52.2  
 52.3  
 52.4  
 52.5  
 52.6  
 52.7  
 52.8  
 52.9  
 53.0  
 53.1  
 53.2  
 53.3  
 53.4  
 53.5  
 53.6  
 53.7  
 53.8  
 53.9  
 54.0  
 54.1  
 54.2  
 54.3  
 54.4  
 54.5  
 54.6  
 54.7  
 54.8  
 54.9  
 55.0  
 55.1  
 55.2  
 55.3  
 55.4  
 55.5  
 55.6  
 55.7  
 55.8  
 55.9  
 56.0  
 56.1  
 56.2  
 56.3  
 56.4  
 56.5  
 56.6  
 56.7  
 56.8  
 56.9  
 57.0  
 57.1  
 57.2  
 57.3  
 57.4  
 57.5  
 57.6  
 57.7  
 57.8  
 57.9  
 58.0  
 58.1  
 58.2  
 58.3  
 58.4  
 58.5  
 58.6  
 58.7  
 58.8  
 58.9  
 59.0  
 59.1  
 59.2  
 59.3  
 59.4  
 59.5  
 59.6  
 59.7  
 59.8  
 59.9  
 60.0  
 60.1  
 60.2  
 60.3  
 60.4  
 60.5  
 60.6  
 60.7  
 60.8  
 60.9  
 61.0  
 61.1  
 61.2  
 61.3  
 61.4  
 61.5  
 61.6  
 61.7  
 61.8  
 61.9  
 62.0  
 62.1  
 62.2  
 62.3  
 62.4  
 62.5  
 62.6  
 62.7  
 62.8  
 62.9  
 63.0  
 63.1  
 63.2  
 63.3  
 63.4  
 63.5  
 63.6  
 63.7  
 63.8  
 63.9  
 64.0  
 64.1  
 64.2  
 64.3  
 64.4  
 64.5  
 64.6  
 64.7  
 64.8  
 64.9  
 65.0  
 65.1  
 65.2  
 65.3  
 65.4  
 65.5  
 65.6  
 65.7  
 65.8  
 65.9  
 66.0  
 66.1  
 66.2  
 66.3  
 66.4  
 66.5  
 66.6  
 66.7  
 66.8  
 66.9  
 67.0  
 67.1  
 67.2  
 67.3  
 67.4  
 67.5  
 67.6  
 67.7  
 67.8  
 67.9  
 68.0  
 68.1  
 68.2  
 68.3  
 68.4  
 68.5  
 68.6  
 68.7  
 68.8  
 68.9  
 69.0  
 69.1  
 69.2  
 69.3  
 69.4  
 69.5  
 69.6  
 69.7  
 69.8  
 69.9  
 70.0  
 70.1  
 70.2  
 70.3  
 70.4  
 70.5  
 70.6  
 70.7  
 70.8  
 70.9  
 71.0  
 71.1  
 71.2  
 71.3  
 71.4  
 71.5  
 71.6  
 71.7  
 71.8  
 71.9  
 72.0  
 72.1  
 72.2  
 72.3  
 72.4  
 72.5  
 72.6  
 72.7  
 72.8  
 72.9  
 73.0  
 73.1  
 73.2  
 73.3  
 73.4  
 73.5  
 73.6  
 73.7  
 73.8  
 73.9  
 74.0  
 74.1  
 74.2  
 74.3  
 74.4  
 74.5  
 74.6  
 74.7  
 74.8  
 74.9  
 75.0  
 75.1  
 75.2  
 75.3  
 75.4  
 75.5  
 75.6  
 75.7  
 75.8  
 75.9  
 76.0  
 76.1  
 76.2  
 76.3  
 76.4  
 76.5  
 76.6  
 76.7  
 76.8  
 76.9  
 77.0  
 77.1  
 77.2  
 77.3  
 77.4  
 77.5  
 77.6  
 77.7  
 77.8  
 77.9  
 78.0  
 78.1  
 78.2  
 78.3  
 78.4  
 78.5  
 78.6  
 78.7  
 78.8  
 78.9  
 79.0  
 79.1  
 79.2  
 79.3  
 79.4  
 79.5  
 79.6  
 79.7  
 79.8  
 79.9  
 80.0  
 80.1  
 80.2  
 80.3  
 80.4  
 80.5  
 80.6  
 80.7  
 80.8  
 80.9  
 81.0  
 81.1  
 81.2  
 81.3  
 81.4  
 81.5  
 81.6  
 81.7  
 81.8  
 81.9  
 82.0  
 82.1  
 82.2  
 82.3  
 82.4  
 82.5  
 82.6  
 82.7  
 82.8  
 82.9  
 83.0  
 83.1  
 83.2  
 83.3  
 83.4  
 83.5  
 83.6  
 83.7  
 83.8  
 83.9  
 84.0  
 84.1  
 84.2  
 84.3  
 84.4  
 84.5  
 84.6  
 84.7  
 84.8  
 84.9  
 85.0  
 85.1  
 85.2  
 85.3  
 85.4  
 85.5  
 85.6  
 85.7  
 85.8  
 85.9  
 86.0  
 86.1  
 86.2  
 86.3  
 86.4  
 86.5  
 86.6  
 86.7  
 86.8  
 86.9  
 87.0  
 87.1  
 87.2  
 87.3  
 87.4  
 87.5  
 87.6  
 87.7  
 87.8  
 87.9  
 88.0  
 88.1  
 88.2  
 88.3  
 88.4  
 88.5  
 88.6  
 88.7  
 88.8  
 88.9  
 89.0  
 89.1  
 89.2  
 89.3  
 89.4  
 89.5  
 89.6  
 89.7  
 89.8  
 89.9  
 90.0  
 90.1  
 90.2  
 90.3  
 90.4  
 90.5  
 90.6  
 90.7  
 90.8  
 90.9  
 91.0  
 91.1  
 91.2  
 91.3  
 91.4  
 91.5  
 91.6  
 91.7  
 91.8  
 91.9  
 92.0  
 92.1  
 92.2  
 92.3  
 92.4  
 92.5  
 92.6  
 92.7  
 92.8  
 92.9  
 93.0  
 93.1  
 93.2  
 93.3  
 93.4  
 93.5  
 93.6  
 93.7  
 93.8  
 93.9  
 94.0  
 94.1  
 94.2  
 94.3  
 94.4  
 94.5  
 94.6  
 94.7  
 94.8  
 94.9  
 95.0  
 95.1  
 95.2  
 95.3  
 95.4  
 95.5  
 95.6  
 95.7  
 95.8  
 95.9  
 96.0  
 96.1  
 96.2  
 96.3  
 96.4  
 96.5  
 96.6  
 96.7  
 96.8  
 96.9  
 97.0  
 97.1  
 97.2  
 97.3  
 97.4  
 97.5  
 97.6  
 97.7  
 97.8  
 97.9  
 98.0  
 98.1  
 98.2  
 98.3  
 98.4  
 98.5  
 98.6  
 98.7  
 98.8  
 98.9  
 99.0  
 99.1  
 99.2  
 99.3  
 99.4  
 99.5  
 99.6  
 99.7  
 99.8  
 99.9  
 100.0



BM#1 705.71 (Sta 541) Set on Top of Granite Monument Elevation 627.19  
 Note: Bench Line established from U.S.C.G. BM#1 C 9 (1933) 42 U.S. Surv. Sta. 37120

BM#2 265.71 (Sta 15100) Set on concrete D.I. Elevation 397.01

PCMINAL  
 Proj. 5-16-42 (B)  
 Sheet 9 of 60



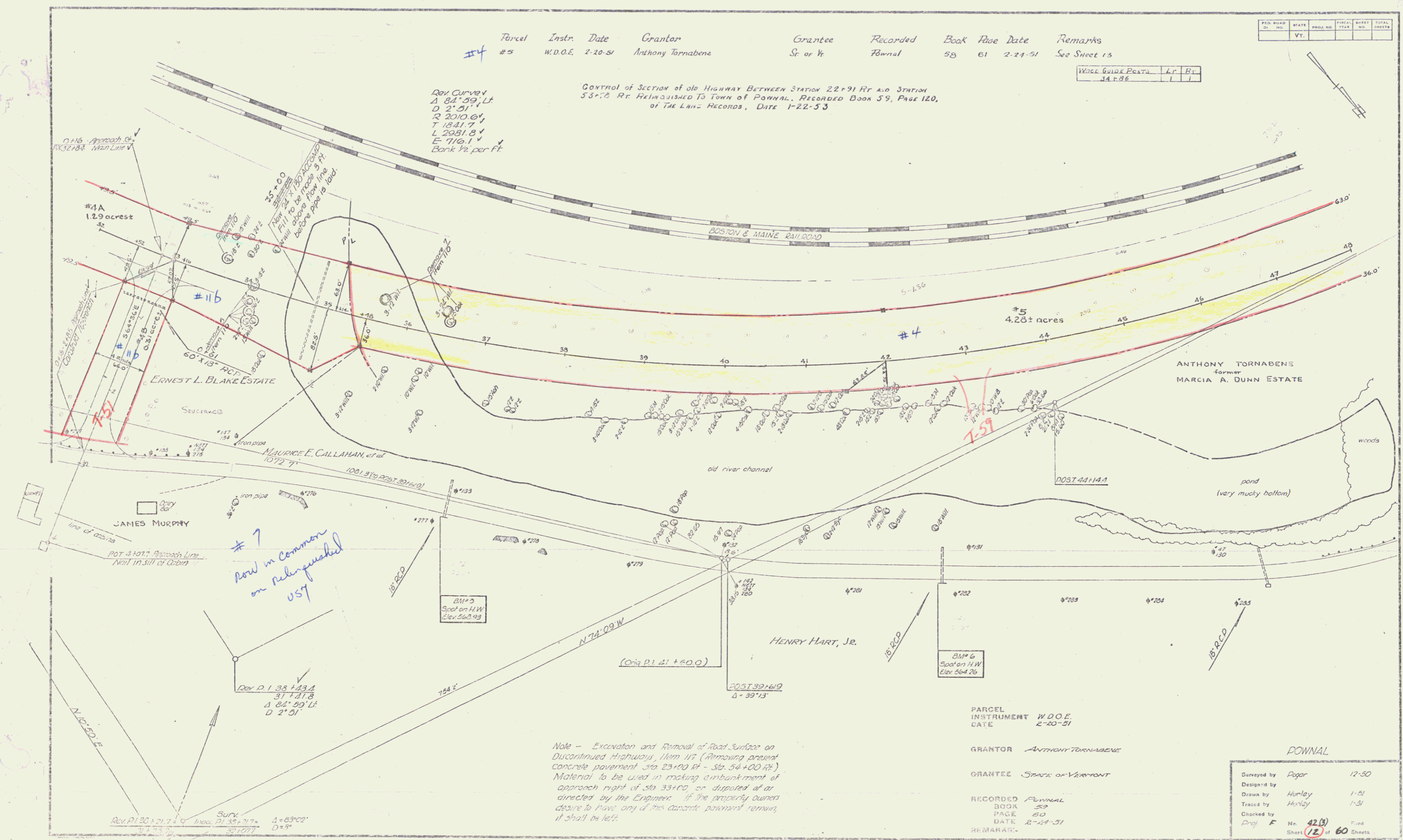
Parcel	Instr.	Date	Grantor	Grantee	Recorded	Book	Page	Date	Remarks
#4	#5	W.D.O.E. 2-20-51	Anthony Tornabene	St. of Vt.	Pownal	58	61	2-21-51	See Sheet 15

FILE NO.	STATE	PLAT NO.	YEAR	TOTAL SHEETS
	Vt.			

WELL GUIDE POSTS	L.F.	R.F.
14 F 86	1	1

REV. CURVE  
 Δ 84° 59' Lt.  
 D 2' 51"  
 R 2010.6'  
 T 1841.7'  
 L 2081.8'  
 E 116.1'  
 Bank 1/2 per ft.

CONTROL OF SECTION OF OLD HIGHWAY BETWEEN STATION 22+91 R.L. AND STATION 53+70 R.L. RELINQUISHED TO TOWN OF POWNAL. RECORDED BOOK 59, PAGE 120, OF THE LAND RECORDS, DATE 1-22-53



#7  
 Now in Common  
 on Relinquished  
 USF

Note - Excavation and Removal of Road Surface on Discontinued Highway, Main 117 (Removing present concrete pavement Sta 23+00 to Sta 54+00 R.L.) Material to be used in making embankment of approach right of Sta 33+00, or disposed of as directed by the Engineer. If the property owners desire to have any of this concrete pavement remain, it shall be left.

PARCEL INSTRUMENT W.D.O.E. DATE 2-20-51

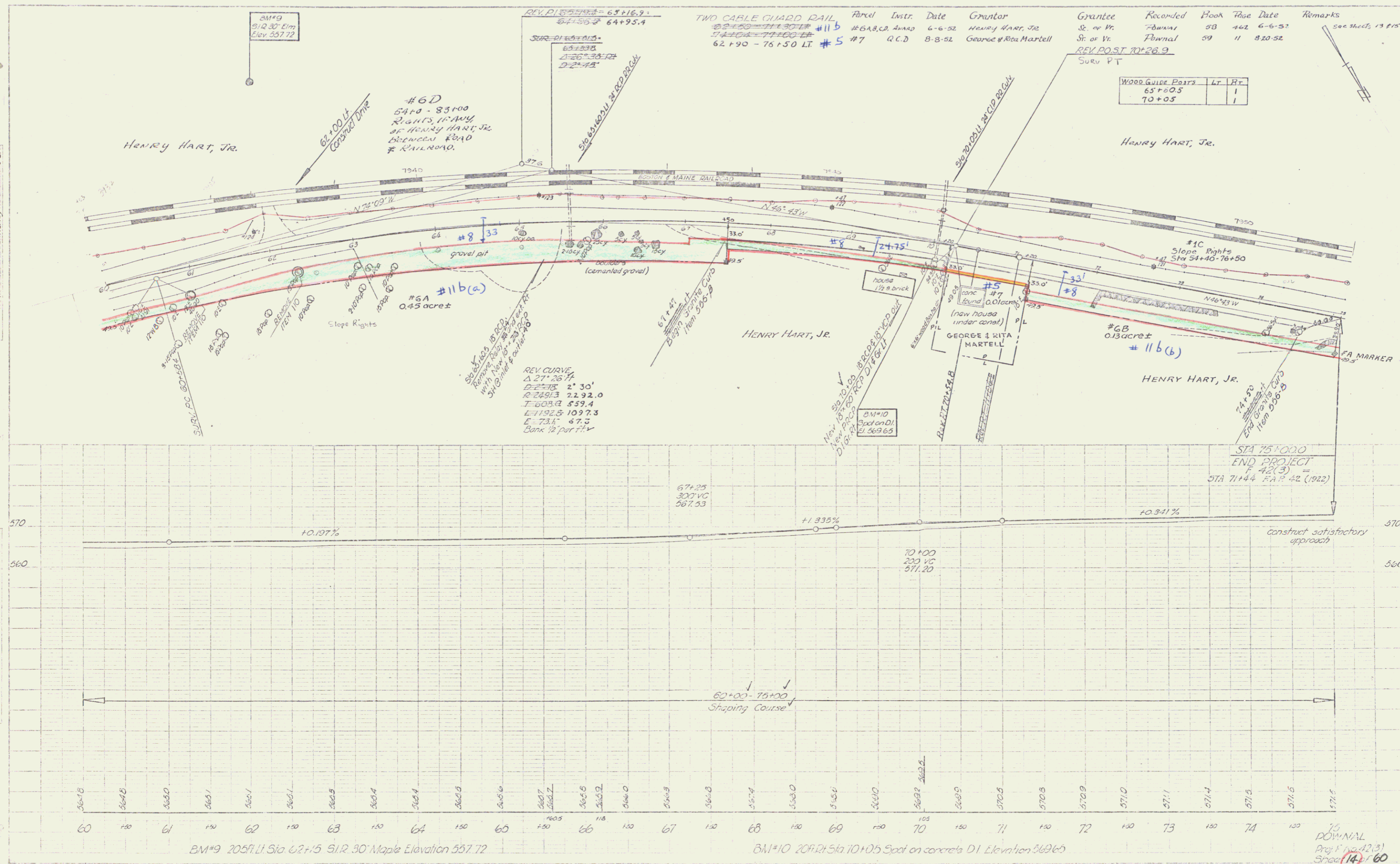
GRANTOR ANTHONY TORNABENE

GRANTEE STATE OF VERMONT

RECORDED POWNAL BOOK 59 PAGE 60 DATE 2-21-51

POWVAL		
Surveyed by	Paper	12-50
Designed by		
Drawn by	Hurley	1-51
Traced by	Hurley	1-51
Checked by	Dray F	
No. 42(B)		Filed
Sheet 12 of 60		Sheets





Parcel Instr. Date Grantor Grantee Recorded Book Page Date Remarks

#6A, C, D	Amad	6-6-52	Henry Hart, Jr.	St. of Vr.	Adams	58	462	6-6-52	
#7	Q.C.D.	8-8-52	George & Rita Martell	St. of Vr.	Penual	59	11	8-20-52	

REV. POST 70+26.9  
Surv. PT

WOOD GUIDE POSTS	LT.	RT.
65+00.5		1
70+05		1

9-30  
Abbey  
Henry

9-30  
Abbey

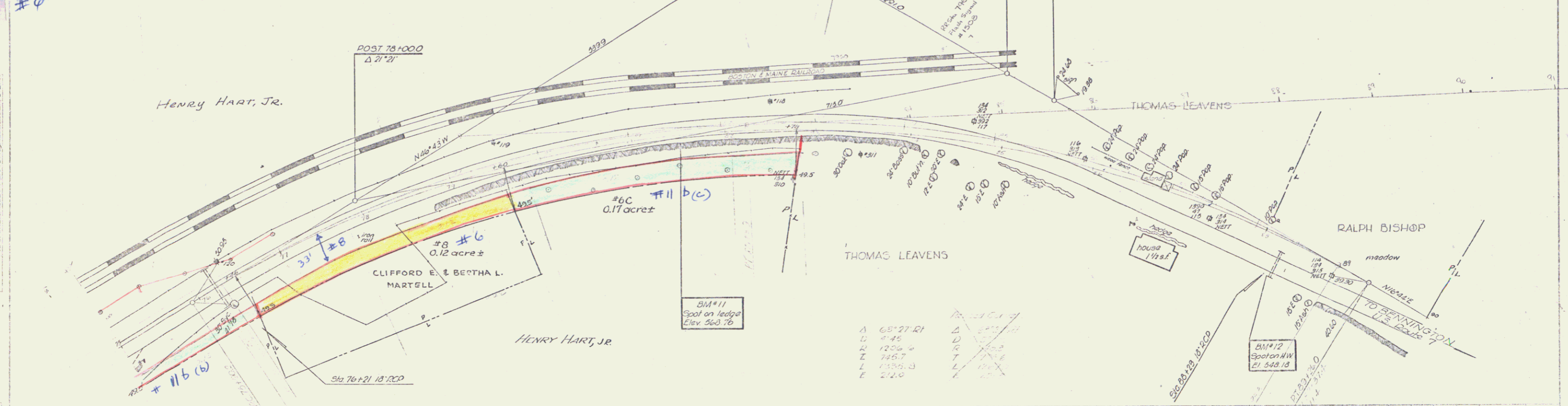
BM#9 205 ft. Sta 62+15 S.I.R. 30' Maple Elevation 557.72

BM#10 20 ft. Sta 70+05 Spot on concrete DI Elevation 569.65

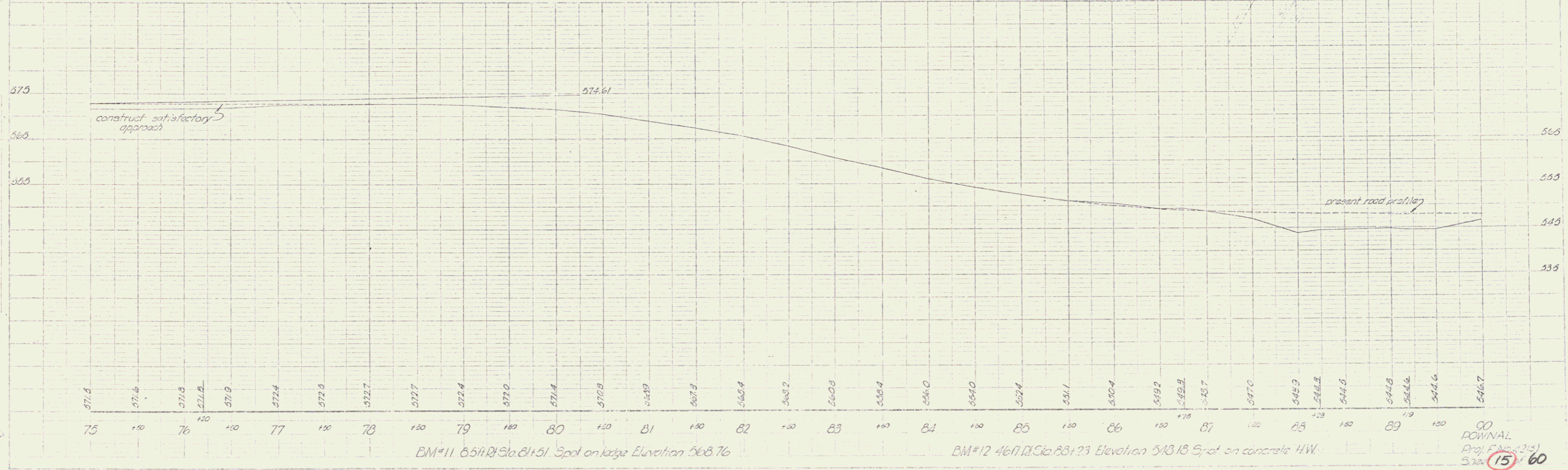
75  
DOWNAL  
Proj. 11/12/33  
Spec. 14-60

THREE CABLE GUARD RAIL  
75+00 - 76+50 LF

Parcel #	Instr.	Date	Grantor	Grantee	Recorded	Book	Page	Date	Remarks
#8	Q.C.D.	8-28-52	Clifford E. & Bertha L. Martell	St. of W.	76	59	12	8-20-52	



Station	Angle	Distance
A	65° 27' 21"	11.0
B	9° 45'	12.0
C	120° 00'	745.7
D	155° 05' 3"	214.0



00  
DOWNAL  
Proj. F.N. 4215  
3722 (15) 60