

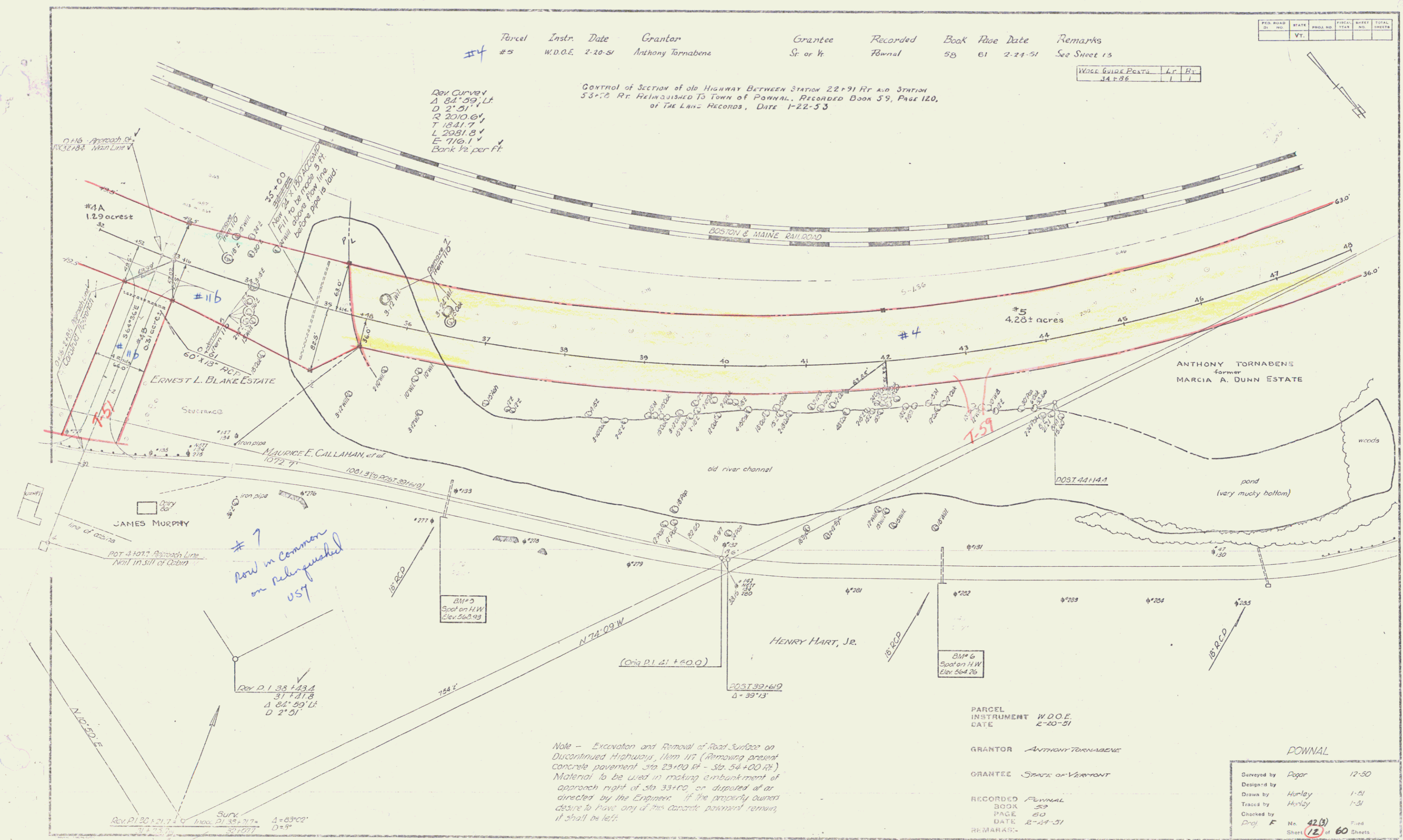
Parcel	Instr.	Date	Grantor	Grantee	Recorded	Book	Page	Date	Remarks
#4	#5	W.D.O.E. 2-20-51	Anthony Tornabene	St. of Vt.	Pownal	58	61	2-21-51	See Sheet 15

FILE NO.	STATE	PLAT NO.	YEAR	TOTAL SHEETS
	Vt.			

WELL GUIDE POSTS	L.F.	R.F.
14 F 86	1	1

REV. CURVE
 Δ 84° 59' Lt.
 D 2' 51"
 R 2010.6'
 T 1841.7'
 L 2081.8'
 E 116.1'
 Bank 1/2 per ft.

CONTROL OF SECTION OF OLD HIGHWAY BETWEEN STATION 22+91 R.L. AND STATION 53+70 R.L. RELINQUISHED TO TOWN OF POWNAL. RECORDED BOOK 59, PAGE 120, OF THE LAND RECORDS, DATE 1-22-53



#7
 Now in Common
 on Relinquished
 USF

Note - Excavation and Removal of Road Surface on Discontinued Highway, Main 117 (Removing present concrete pavement Sta 23+00 to Sta 54+00 R.L.) Material to be used in making embankment of approach right of Sta 33+00, or disposed of as directed by the Engineer. If the property owners desire to have any of this concrete pavement remain, it shall be left.

PARCEL INSTRUMENT W.D.O.E. DATE 2-20-51

GRANTOR ANTHONY TORNABENE

GRANTEE STATE OF VERMONT

RECORDED POWNAL BOOK 59 PAGE 60 DATE 2-21-51

POWVAL		
Surveyed by	Popar	12-50
Designed by		
Drawn by	Hurley	1-51
Traced by	Hurley	1-51
Checked by	Dray F	
No. 42 (B)		Filed
Sheet 12 of 60		Sheets