

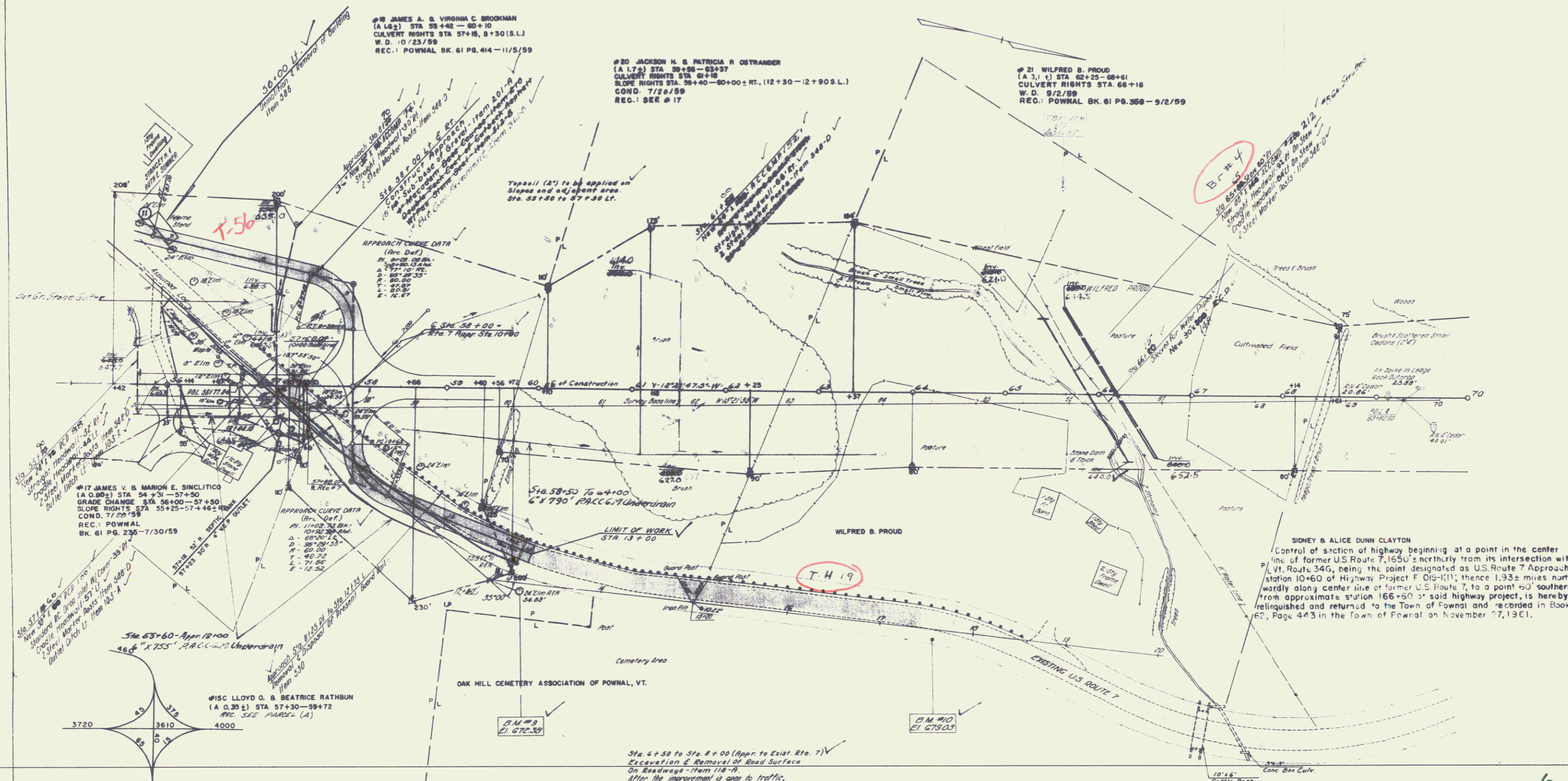
Control  
 away in the center line of former U.S. Route 7, 95'± northerly from its intersection  
 with Vt. Route 345, being approximate survey station 116+65 of U.S. Route 7 (Project F 42-1924) thence  
 1435'± northerly along center line of said highway and along the center line of U.S. Route 7 Approach as  
 established by Highway Project F 019-1(1) to a point approximately 60' westerly from approximate survey  
 station 58+00 of Highway Project F 019-1(1), said point being U.S. Route Approach center line station  
 9+40, is hereby relinquished and returned to the Town of Pownal and recorded in Book 62, Page 443  
 in the Town of Pownal on November 27, 1961.

THREE CABLE BOARD ON W/STEEL POSTS  
 LEFT  
 STA 58+55 - STA 60+60  
 STA 58+55 - STA 59+00  
 STA 59+00 - STA 60+60

STEEL GUIDE POSTS  
 RIGHT  
 STA 58+38 - 67+25

CONSTRUCT DRIVES  
 STATION  
 38760

Drilling and Blasting of  
 Solid Rock Subgrade, Item 11A, Mod.  
 07+80 - 70+00  
 10+80 - 12+30



**TRAFFIC DIAGRAM**  
 STA 58+00  
 EST. 1980 A.D.T.

B.M. #3 Sta. 60100 B  
 2" Spike in Root 24" Elm  
 Side Route #7  
 Elev. 672.38 - Approx. 130' RI

B.M. #10 Sta. 64150 B  
 Chiseled North End Concrete Retaining Wall  
 East Side Route #7, Front Oak Hill Cemetery  
 Elev. 675.03 - 200' RI

Sta. 6+30 to Sta. 8+00 (Appr. to Exist. Rte. 7)  
 Excavation & Removal of Road Surface  
 On Roadways - Item 11A-R  
 After the improvement is open to traffic,  
 the surface base of the former traveled  
 way are to be removed to a depth of 6" and this  
 material used in embankment on the project.

ROUTE US 7  
 TOWN OF POWNAL  
 PROJECT NO. F 019-1(1)  
 DRAWN BY  
 DESIGNED BY  
 TRACED BY  
 CHECKED BY  
 SHEET NO. 23 OF 275