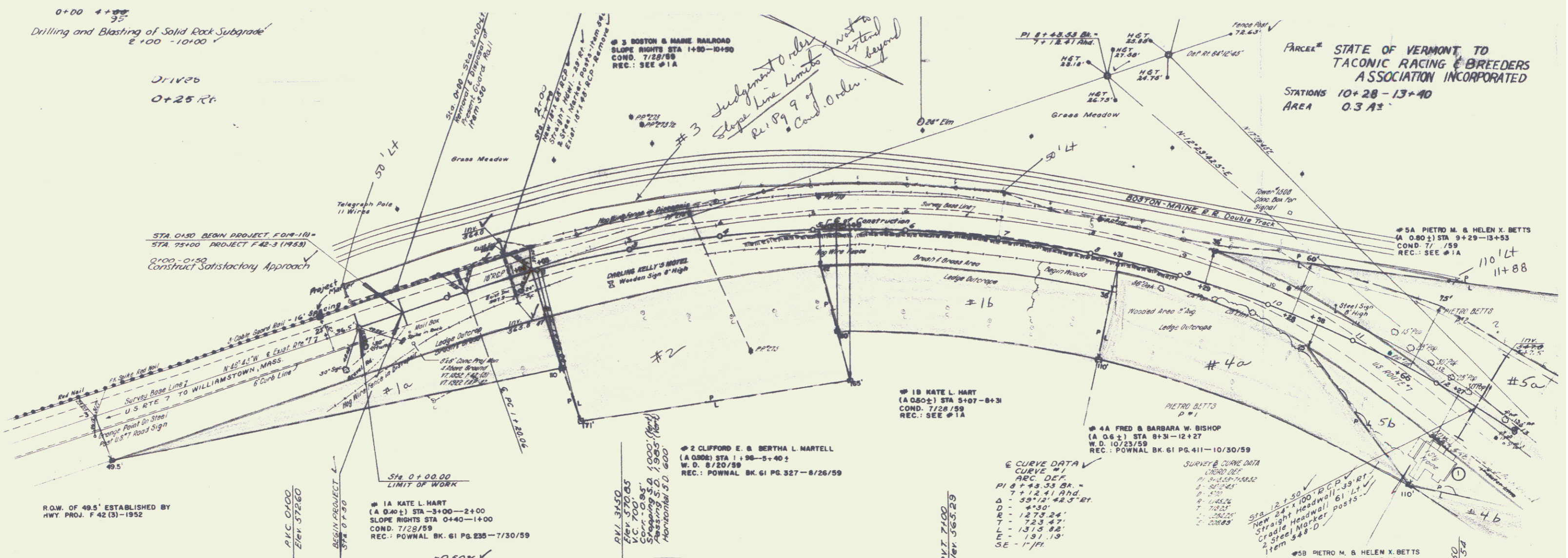


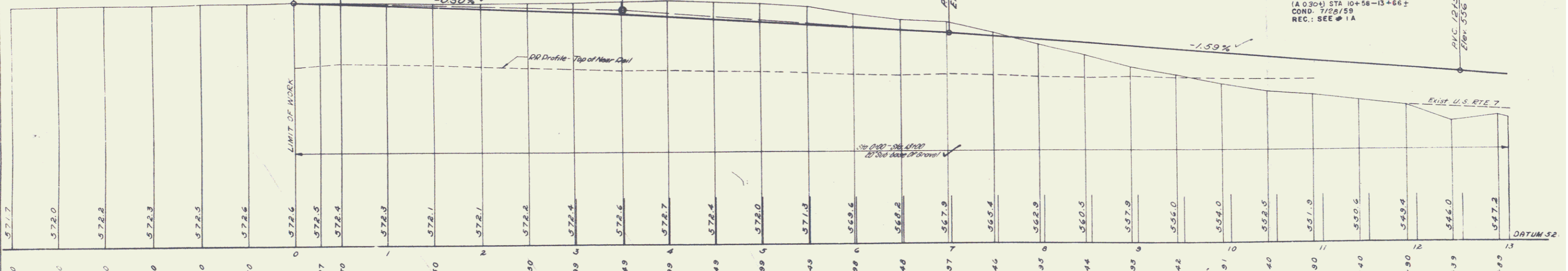
0+00 to 4+35
 Drilling and Blasting of Solid Rock Subgrade
 E+00 - 10+00

Drives
 0+25 Rt.



PARCEL STATE OF VERMONT TO
 TAICONIC RACING & BREEDERS
 ASSOCIATION INCORPORATED
 STATIONS 10+28 - 13+40
 AREA 0.3 A±

R.O.W. OF 49.5' ESTABLISHED BY
 HWY PROJ. F 42 (3)-1952



CURVE DATA
 CURVE #1
 ARC DEF
 PI 9+43.33 BR.
 Δ = 39°12'42.5" RT.
 D = 450'
 R = 1273.24'
 T = 723.49'
 L = 1313.82'
 E = 131.19'
 SE = 17°11'

SURVEY & CURVE DATA
 CURVE DEF
 PI 9+43.33 BR.
 Δ = 39°12'42.5" RT.
 D = 450'
 R = 1273.24'
 T = 723.49'
 L = 1313.82'
 E = 131.19'
 SE = 17°11'

BM #1, Sta 615 @
 R.R. Spikes in Root 24" Elm
 Across B.S.M. R.R. Tracks
 Elev. 552.83 (100 ft)

ROUTE US 7
 TOWN OF POWNAL
 PROJECT NO. FO19-1(1)
 DRAWN BY _____
 DESIGNED BY _____
 TRACED BY _____
 CHECKED BY _____
 SHEET NO. 17 OF 17