

INDEX OF SHEETS

SHEET NO. 1	TITLE PAGE
" "	2 TYPICAL CROSS-SECTION OF IMPROVEMENT & SUMMARY OF QUANTITIES
" "	3-9 LAYOUT SHEETS
" "	10-12 CROSS SECTION SHEETS

FED. ROAD DIST. NO.	STATE	SECTION	SUBSECTION	SHEET NO.	TOTAL SHEETS
9	VT.	73-B	1937	1	12

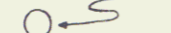

(Landscaping)

STATE OF VERMONT  
STATE HIGHWAY DEPARTMENT

PLAN AND PROFILE OF PROPOSED  
STATE HIGHWAY  
U.S. WORKS PROGRAM HIGHWAY PROJECT

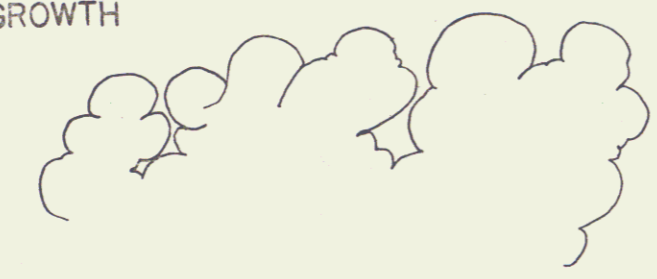
RIGHT-OF-WAY DIVISION  
TOWN FILE  
PERPETUAL  
*Rte*  
Town of *US7*  
(To Be Returned To R.O.W. Division)

PROPOSED PLANTING

- TREES  PINUS RESINOSA 5'6" (RED PINE)
- SHRUB OR VINE BEDS  3 AMPELOPSIS QUINQUEFOLIA 2 YRS (WOODBINE) SPACED 2'3"



EXISTING GROWTH



ROADSIDE IMPROVEMENT *Pin# 99R526*  
PLANTING PLANS

TOWNS OF POWNAL & BENNINGTON

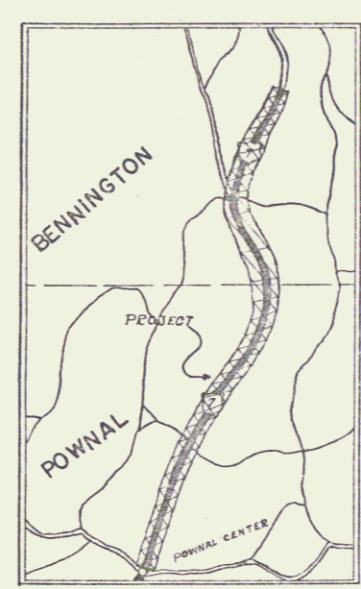
WILLIAMSTOWN-BENNINGTON ROAD

ROUTE U.S. 7 *Project: WPH 73B*

FROM STA. 250+00 OF F.A. PROJECT 73-B  
NORTHERLY TO STA. 535+24 OF  
F.A. PROJECT 73-B

*Pownal MP 4.748-7.988  
Bennington MP 0.00-2.162*

LENGTH OF PROJECT 28,527.5 FT. = 5.402 MILES



SCALES  
TYPICAL SECTIONS AS INDICATED  
LAYOUTS 1" = 50'

CONVENTIONAL SIGNS




COUNTY LINE	GROUND ELEVATION	DATE	LINE
TOWN LINE	GRADE ELEVATION	DATE	LINE
FENCE LINE			
STONE WALL			
UNFENCED PROPERTY EDW.			
GUARD RAIL			
TRAVELED WAY DIV. METALLES			
RETAINING WALL			
CENTER LINE			
SURVEY LINE			
CULVERT			
DROP INLET			
TROLLEY POLE			
POWER POLE			
TELEPHONE POLE			
TREES			
HEDGE			

CURVE DATA

DEFLECTION ANGLE	Δ
DEGREE OF CURVE	D
RADIUS OF CURVE	R
TANGENT DISTANCE	T
LENGTH OF CURVE	L
EXTERNAL DISTANCE	E
POINT OF INTERSECTION	P. I.
POINT OF CURVE	P. C.
POINT OF TANGENT	P. T.
POINT ON TANGENT	P. O. T.

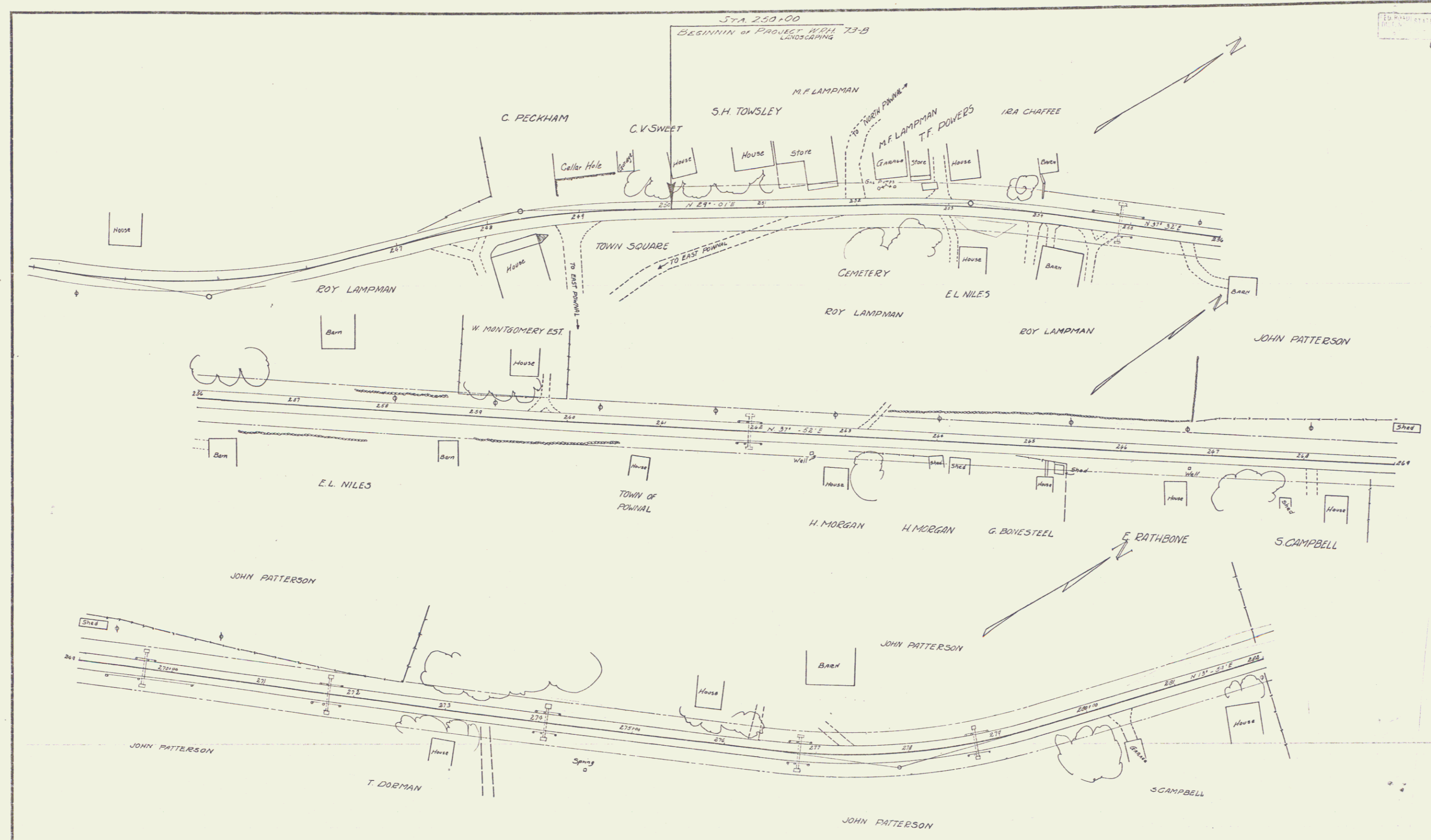
NOTE  
These plans are subject to such revisions as may be required by the Bureau of Public Roads or the Commissioner of Highways. Construction is to be carried on in accordance with the plans and Standard Road and Bridge Specifications of 1936, including all subsequent approved revisions and such revised specifications and special provisions as are submitted with the plans.

APPROVED: *Sept 15, 1936*  
*H. J. ...*  
COMMISSIONER OF HIGHWAYS  
SUBMITTED BY ORDER OF THE STATE HIGHWAY BOARD

RECOMMENDED   
DISTRICT ENGINEER BUREAU OF PUBLIC ROADS  
RECOMMENDED FOR APPROVAL   
CHIEF ENGINEER BUREAU OF PUBLIC ROADS  
APPROVED   
DIRECTOR - BUREAU OF PUBLIC ROADS

SERIES WPH. NO. 73-B FILED  
SHEET 1 OF 12

DIST. # 1 PLANS

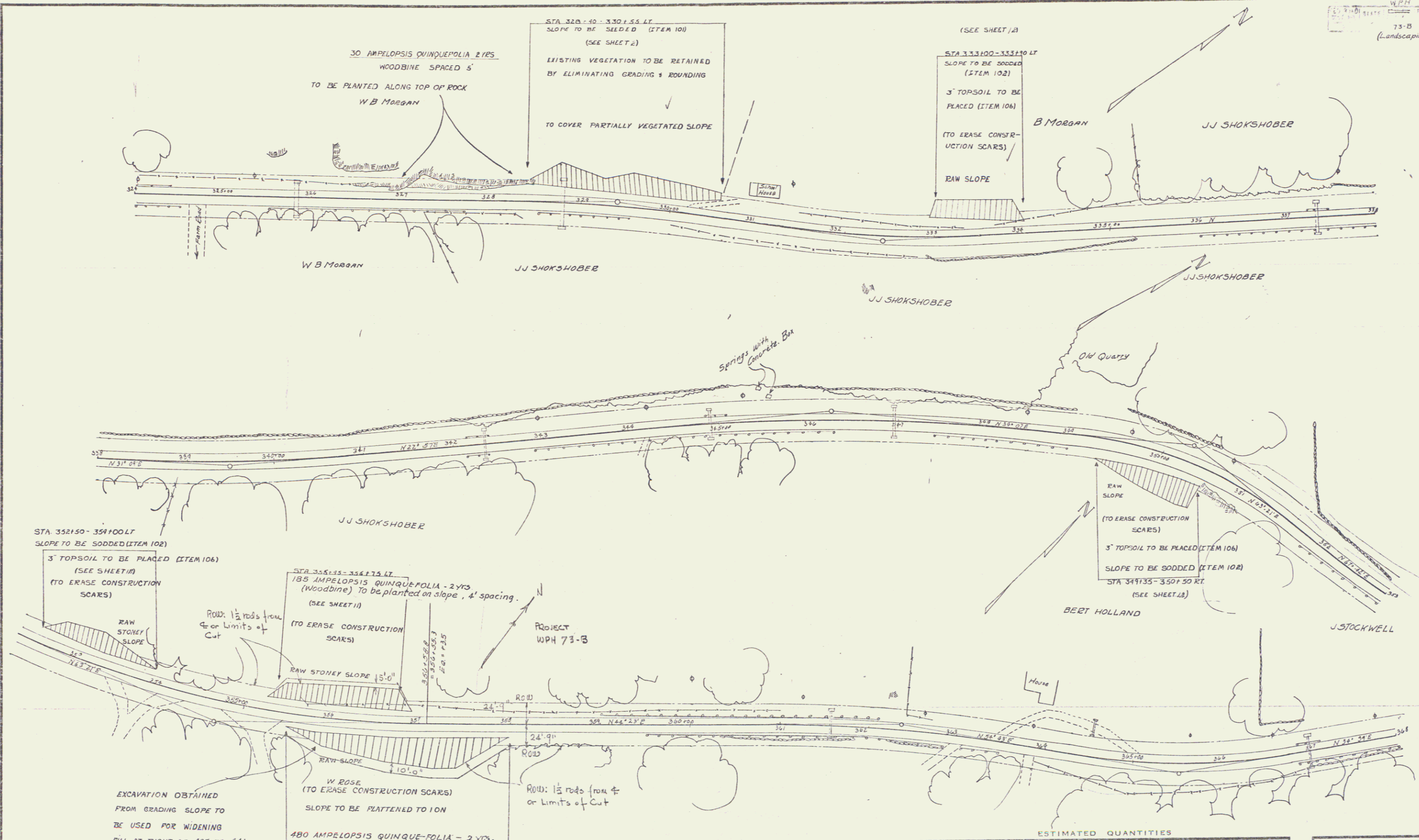


ESTIMATED QUANTITIES

--	--

Surveyed by  
 Designed by  
 Drawn by  
 Traced by LLavin  
 Checked by  
 Series WPH No. 75-B  
 Sheet 5 of 12





STA 352150-354100 LT  
SLOPE TO BE SODDED (ITEM 102)  
3" TOPSOIL TO BE PLACED (ITEM 106)  
(SEE SHEET 11)  
(TO ERASE CONSTRUCTION SCARS)

STA 354125-354175 LT  
185 AMPELOPSIS QUINQUEFOLIA - 2 YRS  
(Woodbine) TO BE PLANTED ON SLOPE, 4' spacing.  
(SEE SHEET 11)  
(TO ERASE CONSTRUCTION SCARS)

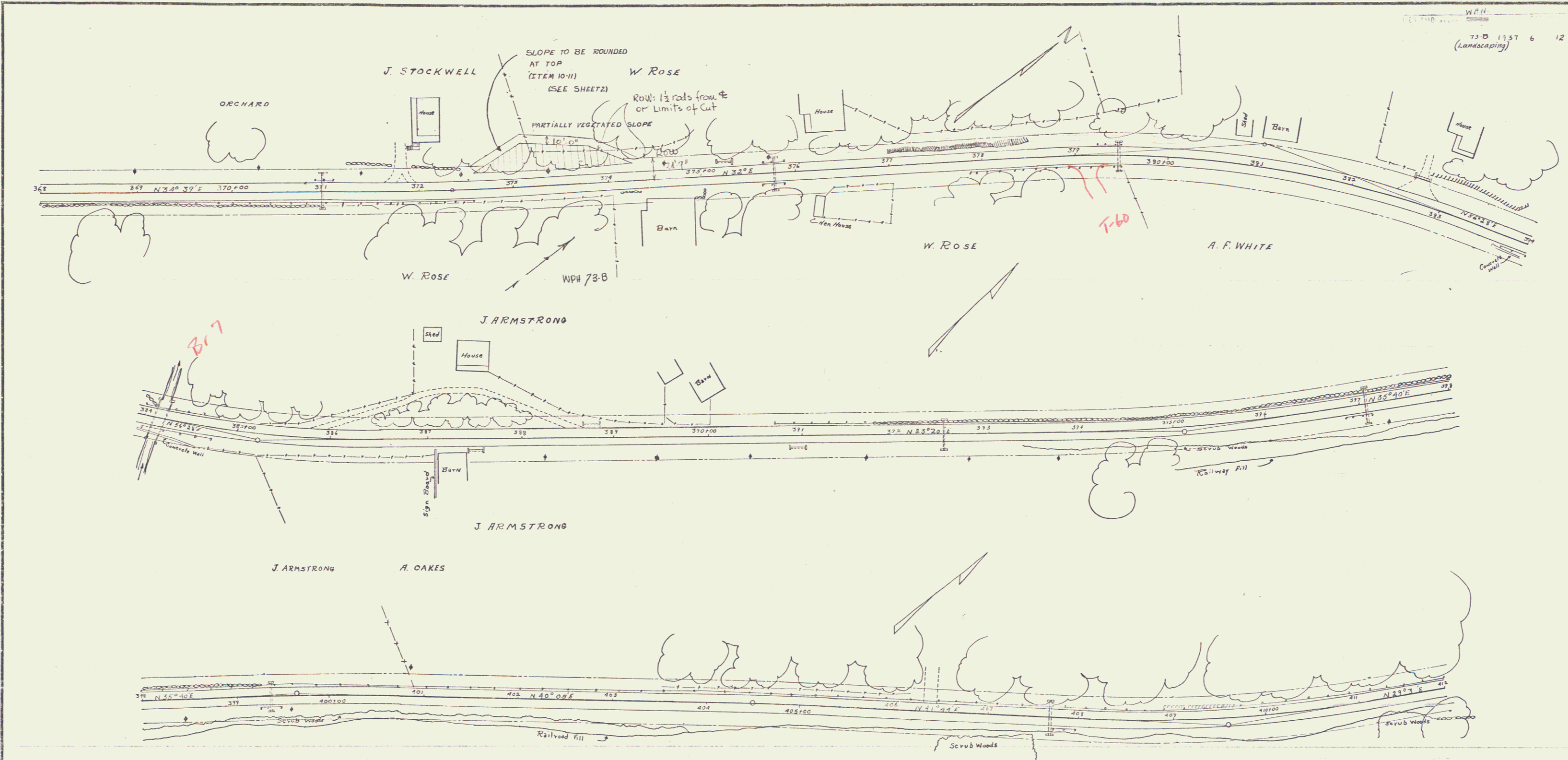
RAW SLOPE  
(TO ERASE CONSTRUCTION SCARS)  
3" TOPSOIL TO BE PLACED (ITEM 106)  
SLOPE TO BE SODDED (ITEM 102)  
STA 349135-350150 RT  
(SEE SHEET 12)

EXCAVATION OBTAINED  
FROM GRADING SLOPE TO  
BE USED FOR WIDENING  
FILL AT RIGHT OF 437.75-441.00

W. ROSE  
(TO ERASE CONSTRUCTION SCARS)  
SLOPE TO BE FLATTENED TO 1:10  
480 AMPELOPSIS QUINQUE-FOLIA - 2 YRS.  
(Woodbine) TO BE PLANTED ON SLOPE, 4' spacing  
STA 353150-355100 RT  
(SEE SHEET 11)

ESTIMATED QUANTITIES

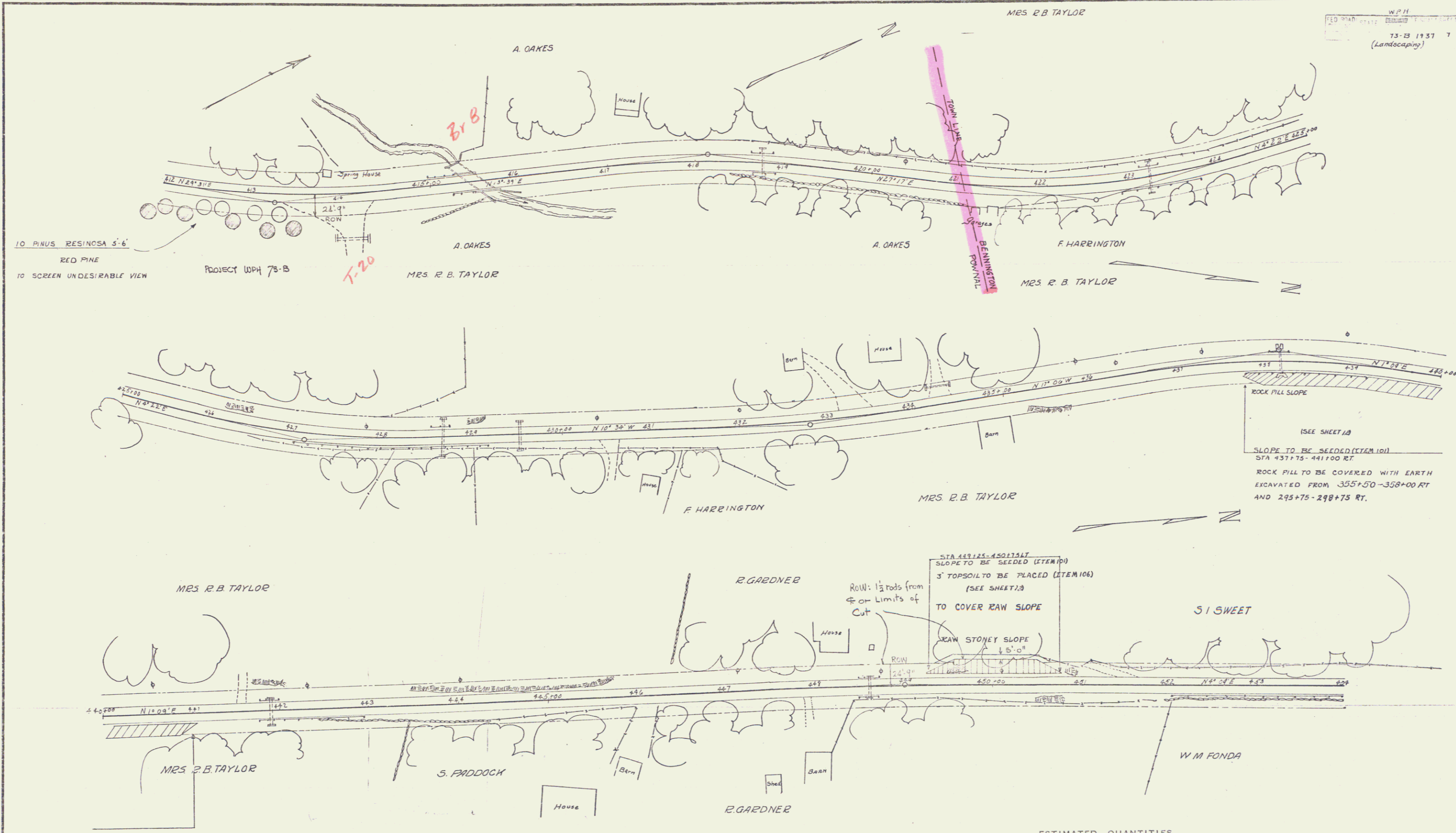

Surveyed by  
Designed by  
Drawn by  
Traced by L.LAVIN  
Checked by  
Series W.P.H. No. 73-B Filed  
Sheet 5 of 12



ESTIMATED QUANTITIES

--	--

Surveyed by  
Designed by  
Drawn by  
Traced by L. KARE  
Checked by  
Series W.P.H. 73-B  
Sheet 6 of 12 sheets



ROCK FILL SLOPE  
 (SEE SHEET 1A)  
 SLOPE TO BE SEEDED (ITEM 101)  
 STA 437+75 - 441+00 RT.  
 ROCK FILL TO BE COVERED WITH EARTH  
 EXCAVATED FROM 355+50 - 358+00 RT.  
 AND 295+75 - 298+75 RT.

STA 447+25 - 450+75 RT.  
 SLOPE TO BE SEEDED (ITEM 101)  
 3' TOPSOIL TO BE PLACED (ITEM 106)  
 (SEE SHEET 1A)  
 TO COVER RAW SLOPE

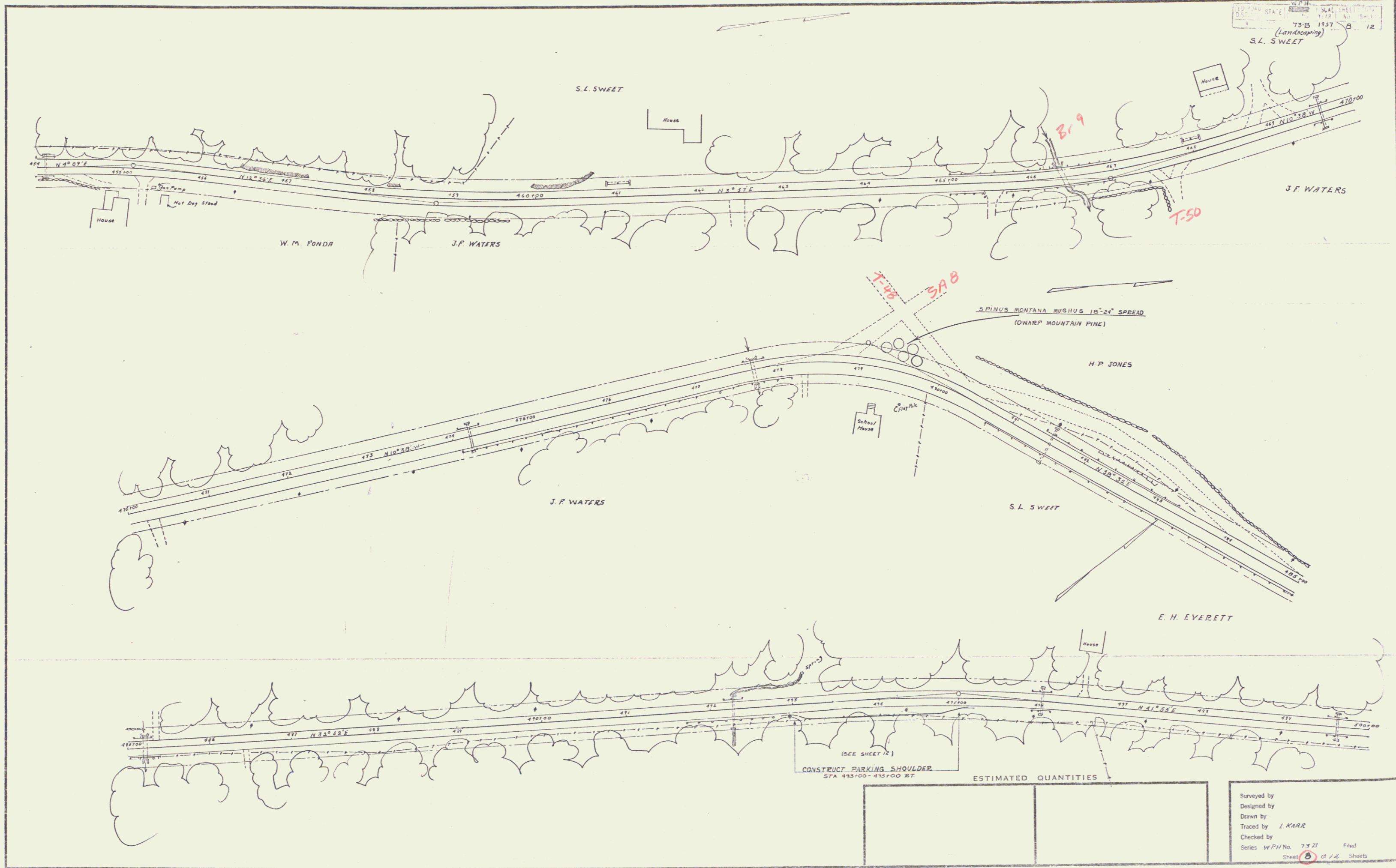
LEAN STONEY SLOPE  
 1/2 5'-0"

ESTIMATED QUANTITIES

--	--

Surveyed by  
 Designed by  
 Drawn by  
 Traced by LLAVIN  
 Checked by  
 Series WPH No. 73-B Field  
 Sheet 7 of 12 Sheets

WEST VIRGINIA STATE DEPARTMENT OF HIGHWAYS  
 75-B 1157 5 12  
 (Landscape)  
 S.L. SWEET

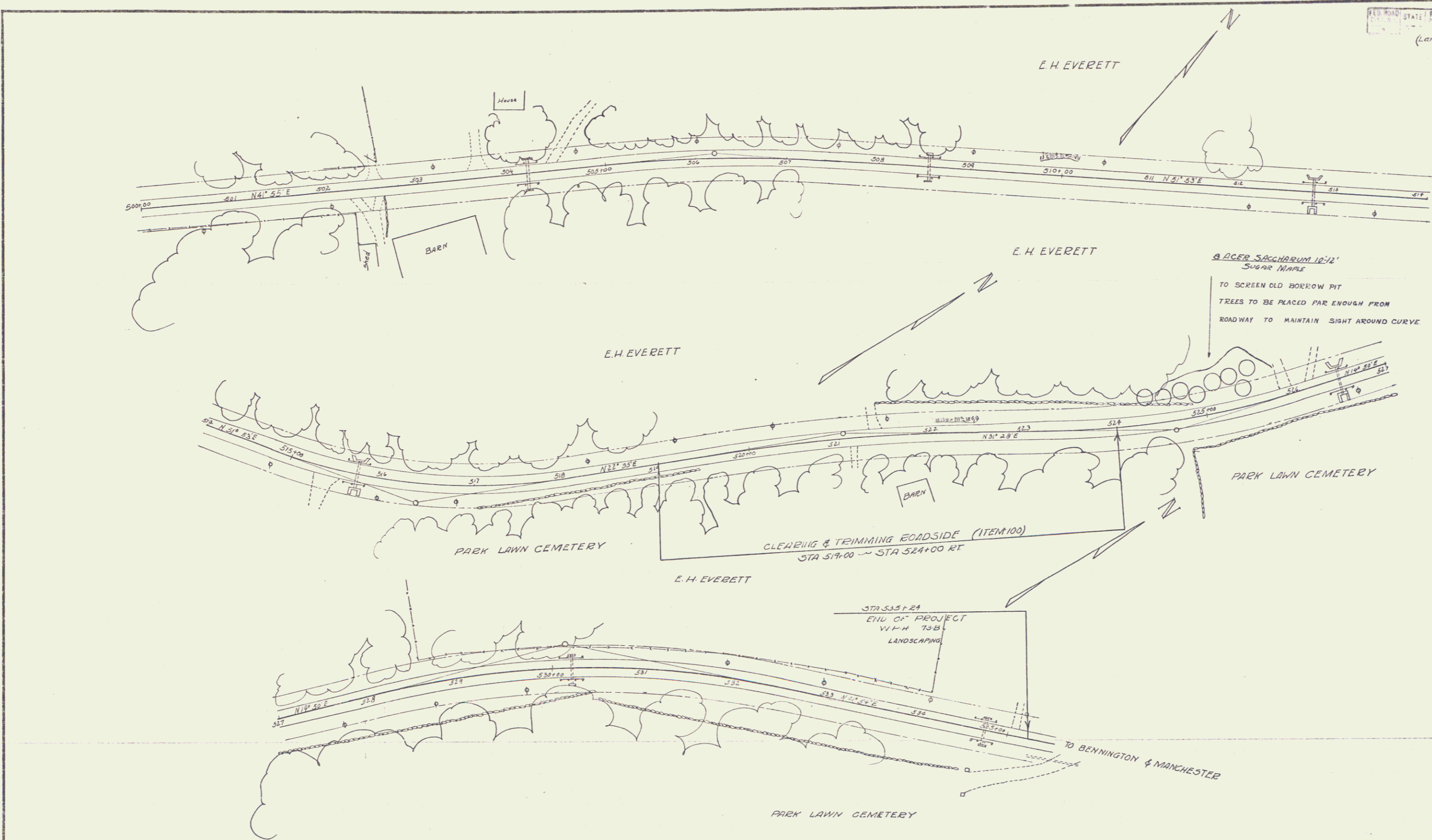


(SEE SHEET 12)  
 CONSTRUCT PARKING SHOULDER  
 STA 493+00-495+00 BT

ESTIMATED QUANTITIES

--	--

Surveyed by  
 Designed by  
 Drawn by L. KARR  
 Traced by  
 Checked by  
 Series WPH No. 75-21 Filed  
 Sheet 5 of 12 Sheets



ESTIMATED QUANTITIES

--	--

Surveyed by  
 Designed by  
 Drawn by  
 Traced by *L.L. Lavin*  
 Checked by  
 Series *W.P.H.* No. *75-B* Filed  
 Sheet *9* of *12* SHEETS