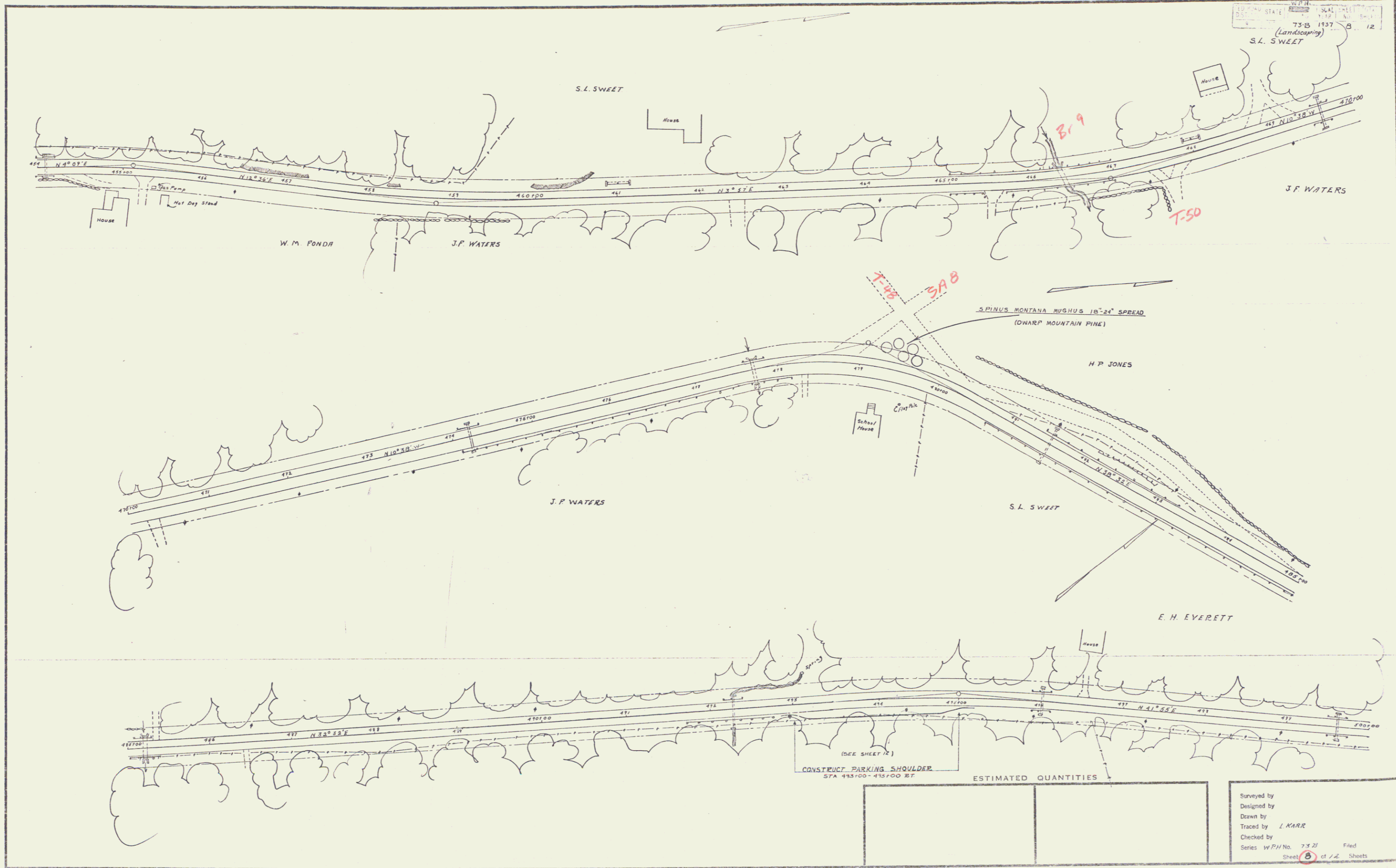


WEST VIRGINIA STATE DEPARTMENT OF HIGHWAYS
 75-B 1157 5 12
 (Landscape)
 S.L. SWEET



(SEE SHEET 12)
 CONSTRUCT PARKING SHOULDER
 STA 493+00-495+00 BT

ESTIMATED QUANTITIES

Surveyed by
 Designed by
 Drawn by L. KARR
 Traced by
 Checked by
 Series WPH No. 75-21 Filed
 Sheet 5 of 12 Sheets