

INDEX OF SHEETS

SHEET NO.	TITLE PAGE
2	TYPICAL CROSS-SECTION OF IMPROVEMENT
3	PLAN AND PROFILE STA. 250+00 TO 256+00
4	" " " " 256+00 " 269+00
5	" " " " 269+00 " 282+00
6	" " " " 282+00 " 295+00
7	" " " " 295+00 " 310+00
8	" " " " 310+00 " 324+00
9	" " " " 324+00 " 338+00
10	" " " " 338+00 " 353+00
11	" " " " 353+00 " 368+00
12	" " " " 368+00 " 384+00
13	" " " " 384+00 " 398+00
14	" " " " 398+00 " 412+00
15	" " " " 412+00 " 425+00
16	" " " " 425+00 " 440+00
17	" " " " 440+00 " 454+00
18	" " " " 454+00 " 470+00
19	" " " " 470+00 " 485+00
20	" " " " 485+00 " 500+00
21	" " " " 500+00 " 514+00
22	" " " " 514+00 " 527+00
23	" " " " 527+00 " 536+84
24	BRIDGE STA 384+16
25	" " " " 415+39
26-73	CROSS-SECTIONS.

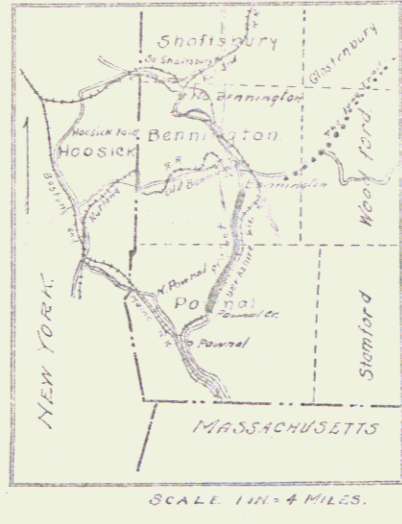
STATE OF VERMONT
STATE HIGHWAY DEPARTMENT

PLAN AND PROFILE OF PROPOSED
STATE HIGHWAY
FEDERAL AID PROJECT

**TOWNS OF
POWNA - BENNINGTON**
POWNA CENTER ROAD

BEGINNING 1200 FT. NORTH OF F.A.P. 73A. AND EXTENDING
N.Y. 5.4 MILES TO CEMENT ROAD IN BENNINGTON.

PERCENT	DATE	BY	REVISION
9	Ys	72B	1926



PLAN 1 IN = 50 FT.
PROFILES 1 IN = 50 FT.
SCALES PROFILE VIEW 1 IN = 10 FT.
CROSS SECTIONS 1 IN = 5 FT.



CONVENTIONAL SIGNS

COUNTY LINE	GROUND ELEVATION	DEFLECTION ANGLE Δ
TOWN LINE	GRADE ELEVATION	DEGREE OF CURVE D
FENCE LINE		RADIUS OF CURVE R
STONE WALL		TANGENT DISTANCE T
UNFENCED PROPERTY		LENGTH OF CURVE L
GUARD RAIL		EXTERNAL DISTANCE E
RAILROAD		POINT OF INTERSECTION P.I.
TRAVELED WAY		POINT OF CURVE P.C.
RETAINING WALL		POINT OF TANGENT P.T.
CENTER LINE		
SURVEY LINE		
CULVERT		
DROP INLET		
TROLLEY POLE		
POWER POLE		
TELEPHONE POLE		
TREES		
HEDGE		

RIGHT-OF-WAY DIVISION
TOWN FILE
PERPETUAL
US 7
(To Be Returned To R.O.W. Division)

APPROVED: *H.C. [Signature]*
March 18, 1926
SUBMITTED BY CORP. OF THE STATE HIGHWAY BOARD
1926
A.P. [Signature]
SUPERVISOR OF HIGHWAYS

RECOMMENDED
DISTRICT ENGINEER
BUREAU OF PUBLIC WORKS
RECOMMENDED FOR APPROVAL
APPROVED
DIRECTOR - BUREAU OF PUBLIC WORKS

Project No. F.A.P. 73B

SERIES F No. 73 FILED
SHEET 1 OF 73

DIST. # 1 PLANS

WOOD GUARD RAIL REQUIRED
ON LEFT
Sta 254+56 to 255+12 Length 56ft
ON RIGHT
Sta 254+76 to 255+00 Length 24ft
Total this Sheet 80ft

NEW CULVERTS REQUIRED
Sta 253+00 18" Concrete or Cast Iron Pipe 40ft
1-2-4 Concrete 13 cuyd
Steel 60 lbs.

6" SUB BASE REQUIRED
Sta 250+00 to Sta 253+75 Length 375 ft
Sta 253+75 to Sta 256+00 " 25 ft

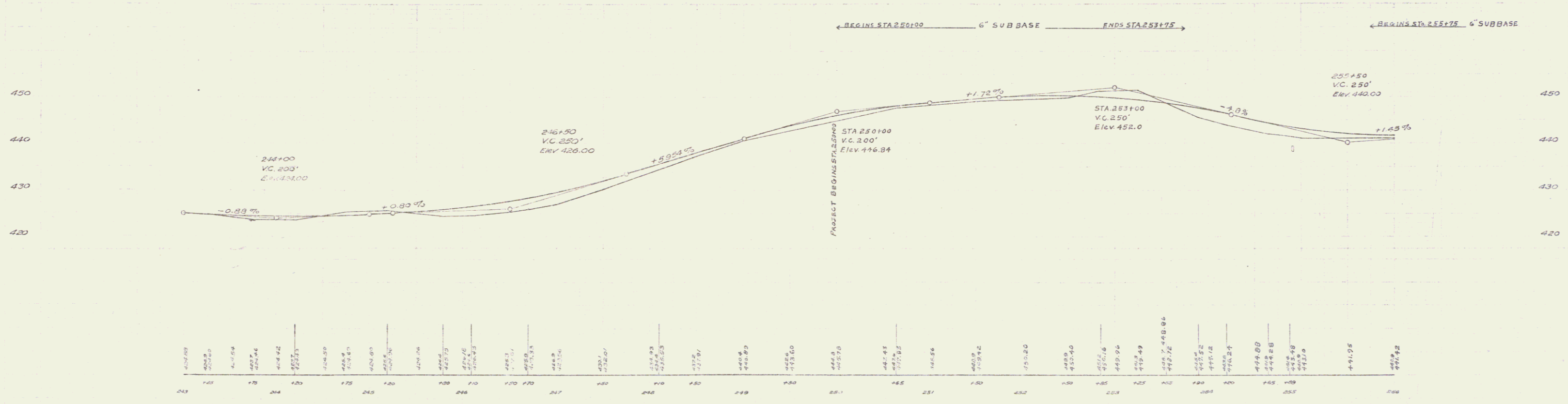
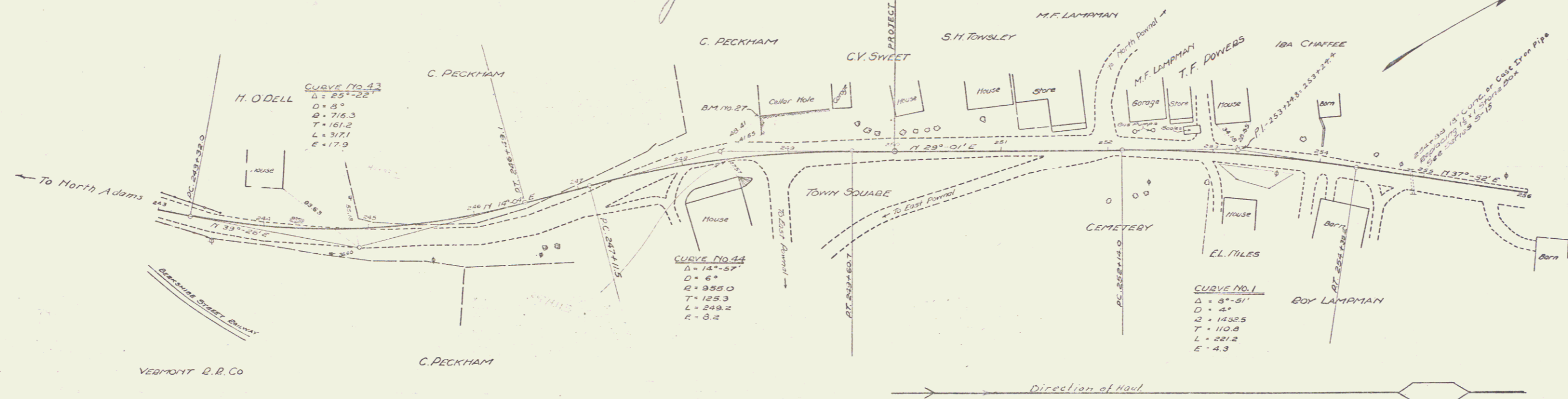
STA 250+00
BEGINNING OF PROJECT
W.P.H. 73-B

VT 73B 1926 3 73

Nothing

RM Stevens
1925

RM Stevens
1925
L.H. Hayward
1925



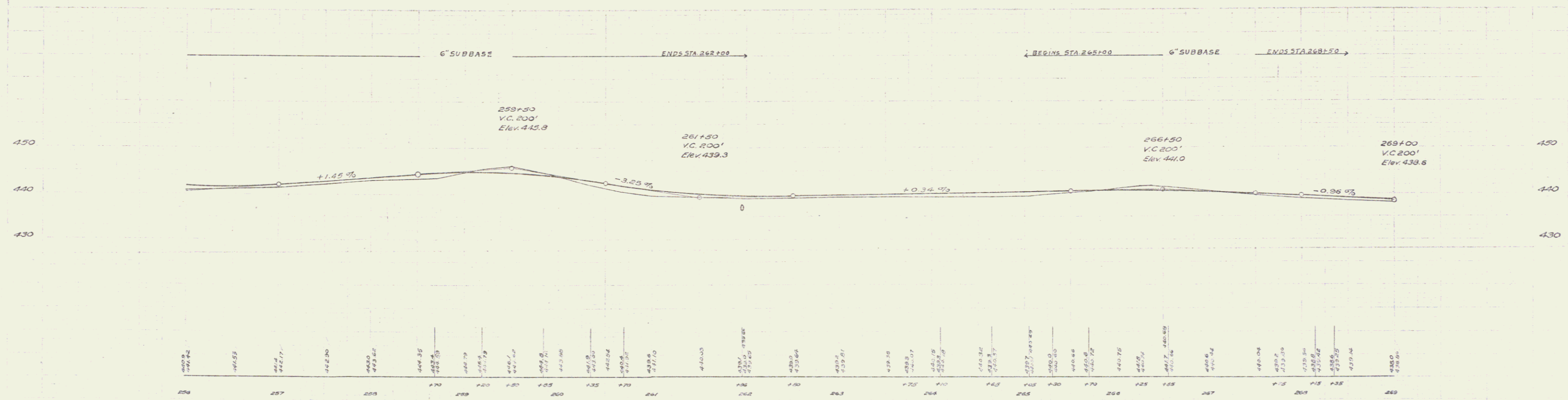
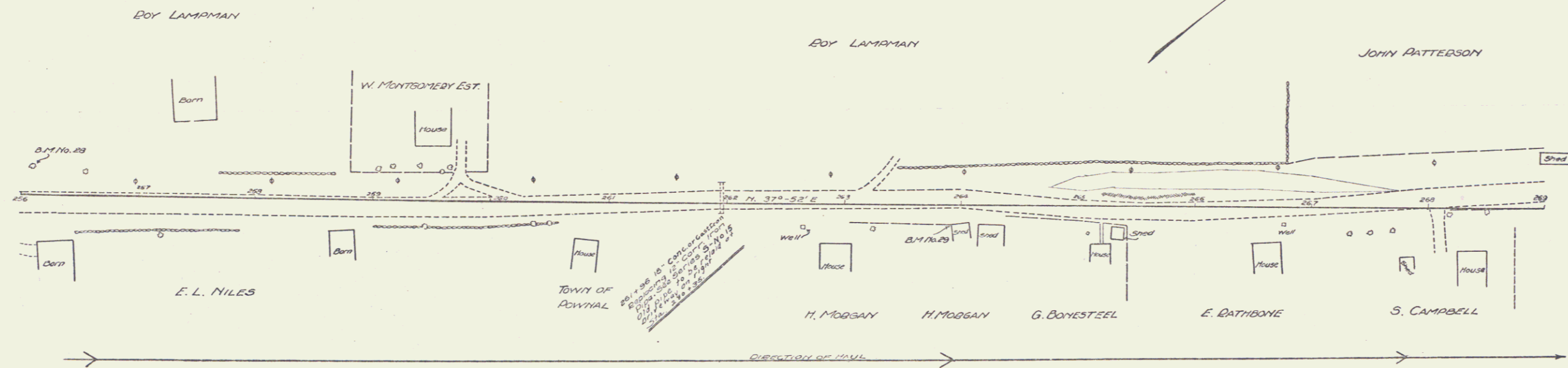
Series 73B
Sheet 3 of 73

WOOD GUARD RAIL REQUIRED
 ON LEFT
 Sta 261+04 to Sta 262+08 length 24 ft
 ON RIGHT
 Sta 261+04 to Sta 262+08 length 24 ft
 TOTAL THIS SHEET 40 ft

NEW CULVERTS REQUIRED
 261+06 18" Concrete or Cast Iron 32 ft
 1-2-4 Concrete 1.9 cu yd
 Steel 60 lbs.
 6" SUB BASE REQUIRED
 Sta 266+00 to Sta 268+00 length 600 ft
 350 ft

73B 1926 A 73
J. H. H. H.

Nothing



SEE
 PLAN
 FOR
 DETAILS

BM No. 23 18" Elm left of Sta 256+10, Elev 441.74
 BM No. 29 Bottom Bathhouse, SW Cor. Shed, Right of Sta 263+02, Elev 437.83

Series No. 73B
 Sheet 4 of 13

WOOD GUARD RAIL REQUIRED

Sta	Length	Notes
270+00 to Sta 272+20	24 ft	Left
270+00	24	
270+63	24	
269+28	24	
271+00	24	
273+96	24	On Right
270+69	24	
270+63	24	
269+28	36	
271+54	32	
TOTAL THIS SHEET		320 FT

NEW CULVERTS REQUIRED

Sta 269+40	18" Concrete or Cast Iron Pipe 40ft	21 Cu. yds.
	1-2 1/2" Concrete	33 lbs.
Sta. 271+74	18" Concrete or Cast Iron Pipe 44ft	1.9 Cu. yds
	1-2" Concrete	60 lbs.
Sta. 274+08	18" Concrete or Cast Iron Pipe 32ft	1.9 Cu. yds.
	1-2" Concrete	60 lbs.
Sta. 276+82	18" Concrete or Cast Iron Pipe 32ft	1.9 Cu. yds.
	1-2" Concrete	60 lbs.
Sta. 278+75	18" Concrete or Cast Iron Pipe 38ft	1.9 Cu. yds.
	1-2" Concrete	60 lbs.

RELAYING PIPE CULVERTS

Sta. 280+35 on Right of Driveway Length 26ft
 Class B Conc. (1-2-3) 1.5 Cu. yds.
 Reinf. Steel 33 lbs.

SUB BASE REQUIRED

Sta 272+25 to Sta 278+00	Length 575 ft
Sta 281+00 to Sta 282+00	Length 100 ft

RETAINING WALL REQUIRED

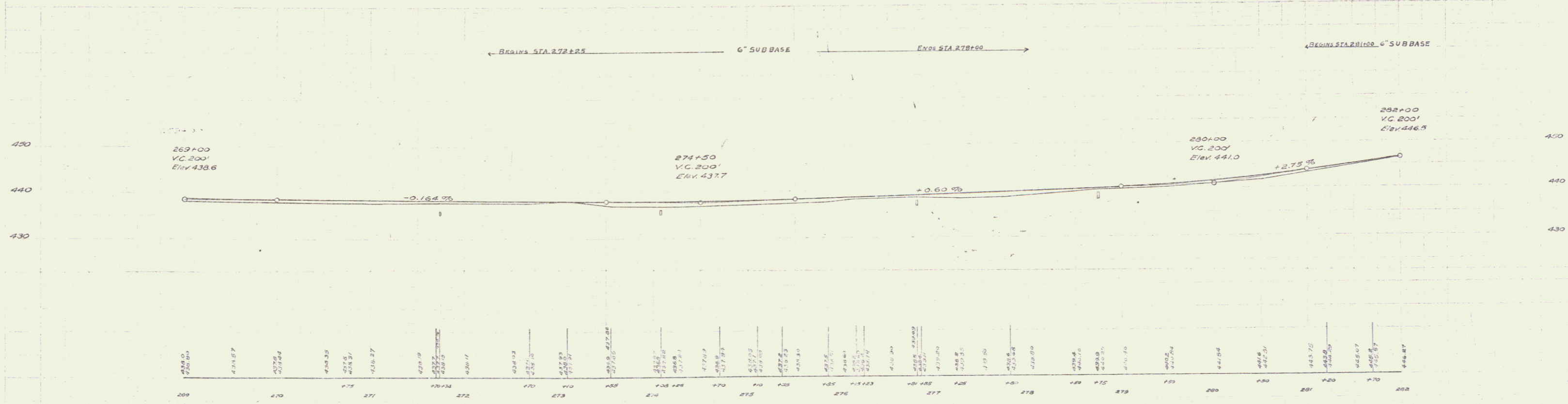
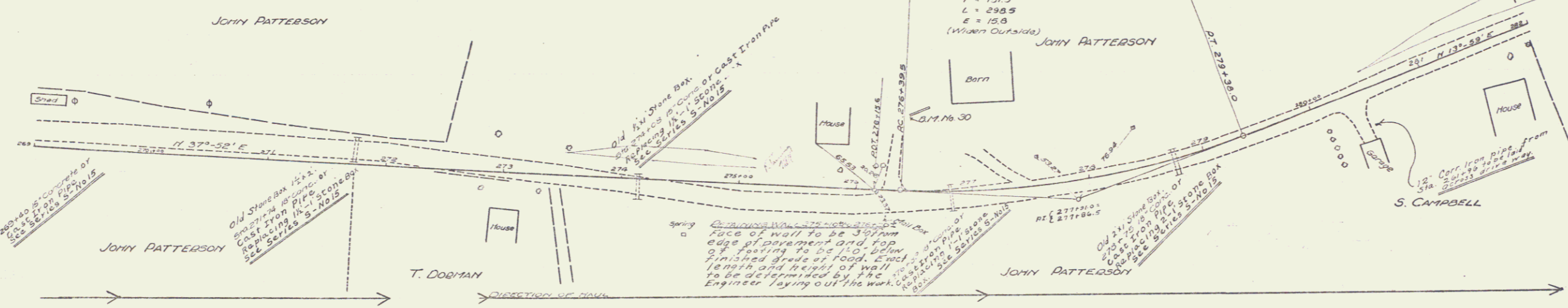
Sta. 275+00 to 276+00 Length 110 ft.
 (Built on left of Road as per Note)
 1-2 1/2" Concrete 470 Cu. yds.

Nothing

F019-1(1) 1961
 F019-1(16) 9/1
 738 1925 5 73

S. E. 5-25
 JOHN PATTERSON

S. E. 5-25
 JOHN PATTERSON



B/T No. 30 Drill hole, South end of Wall, left of Sta. 276+42 Elev. 441.67

WOOD SILLING RAIL REQUIRED ON LEFT
 Sta 289+11 to Sta 289+65 Length 54 ft
 289+23 " 289+27 " 24 "
 293+17 " 293+41 " 24 "
ON RIGHT
 Sta 289+2 " to Sta 289+65 Length 63 ft
 289+10 " 289+10 " 180 "

CABLE GUARD RAIL REQUIRED ON RIGHT
 Sta 292+50 to Sta 295+94 Length 344 ft

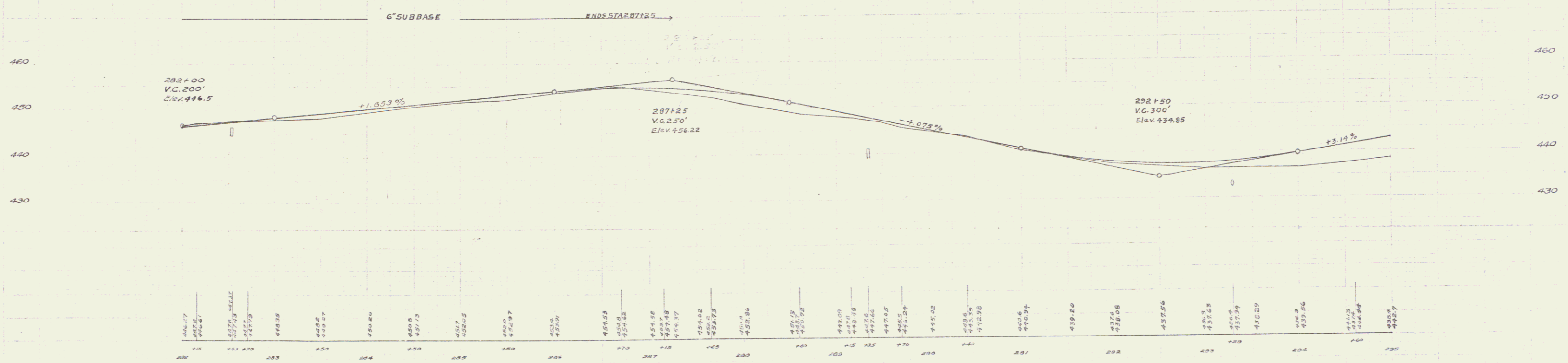
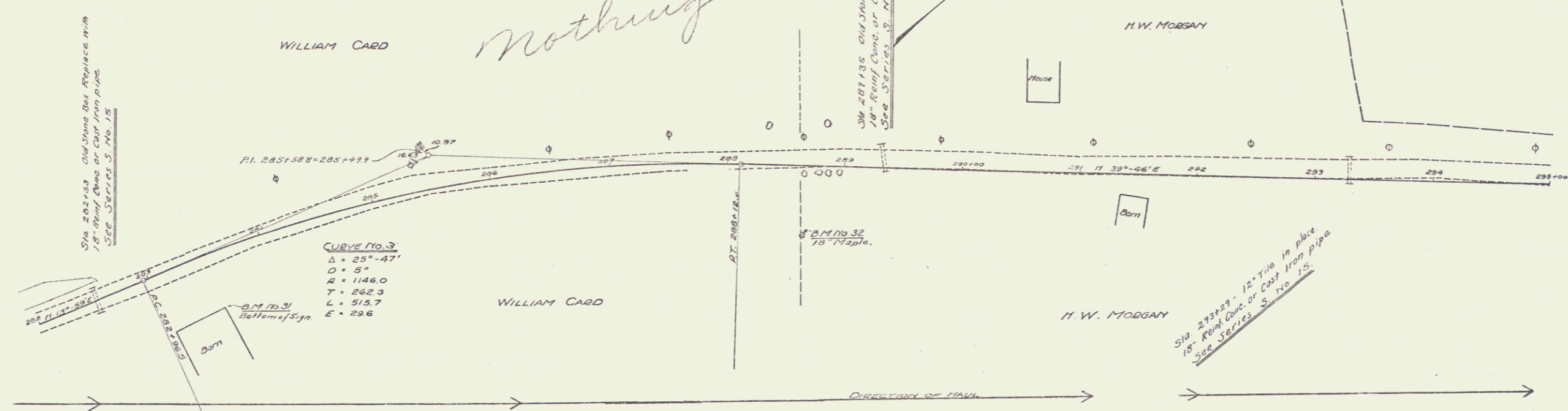
NEW CULVERTS REQUIRED
 Sta 292+53 - 18" Reinf Conc or Cast Iron pipe Length 28 ft
 Class A. Cont. (1-2-4) 19 cu yd
 Reinf. Steel 60 lbs.
 Sta 289+35 - 18" Reinf Conc or Cast Iron pipe Length 36 ft
 Class A. Cont. (1-2-4) 19 cu yd
 Reinf. Steel 60 lbs.
 Sta 293+29 - 18" Reinf Conc or Cast Iron pipe Length 40 ft
 Class A. Cont. (1-2-4) 19 cu yd
 Reinf. Steel 60 lbs.

6" SUB-BASE REQUIRED
 Sta 282+00 to 287+25 Length 525 ft

73B 1926 6 73

PM 3/18/26
 AM 3/18/26
 3-25

PM 3/18/26
 AM 3/18/26
 3-25



B.M. 70.31 Bottom of Sign, N.W. Car Barn, Right of Sta. 283+52 Elev. 446.33
 B.M. No. 32 18" Maple Tree Right of Sta. 289+65 Elev. 442.29

Series No. 73B
 Sheet 6 of 73

WOOD GUARD RAIL REQUIRED

ON LEFT	
Sta. 31196 to Sta. 312120	Length 24 M
Sta. 31193 to Sta. 318117	24 "
Sta. 32018 to Sta. 320144	24 "
Sta. 32170 to Sta. 324100	130 "
ON RIGHT	
Sta. 31196 to Sta. 312120	24 "
TOTAL THIS SHEET	226

CABLE GUARD REQUIRED

ON RIGHT	
Sta. 31193 to Sta. 321100	Length 607 ft

NEW GULVERTS REQUIRED

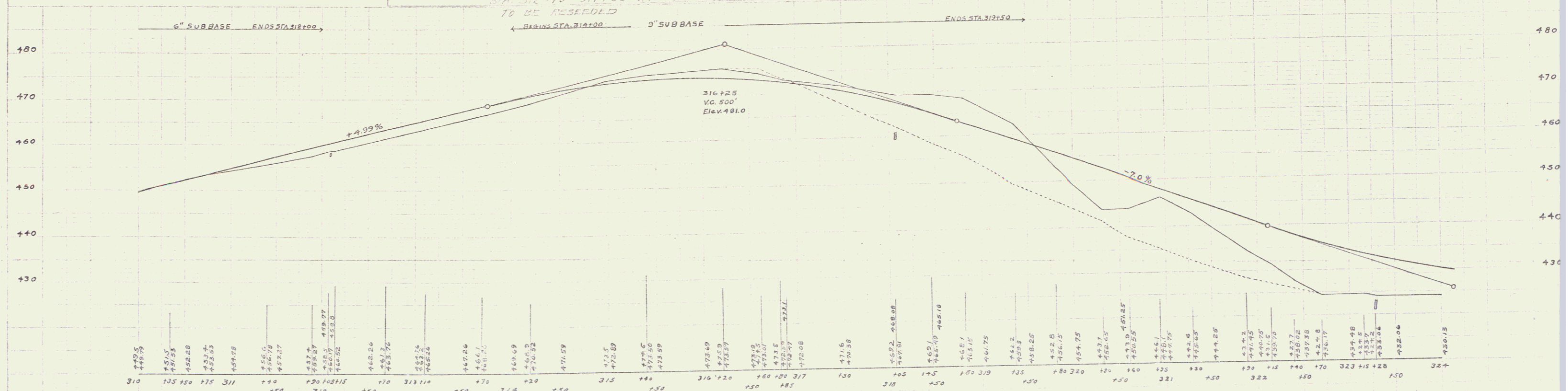
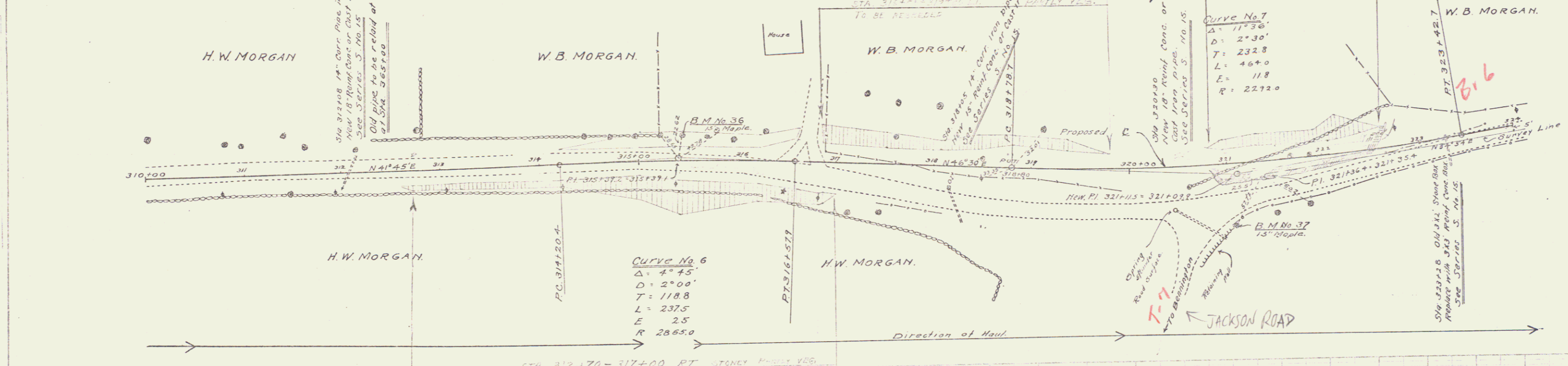
Sta. 312108	18" Reinf. Conc. or Cast Iron pipe Length 40 ft	17 Cu yd.
	Class A Conc. (1-2-4)	60 lbs.
	Reinf. Steel	
Sta. 310105	15" Reinf. Conc. or Cast Iron pipe Length 36 ft	21 Cu yd.
	Class B Conc. (1-2-3)	39 lbs.
	Reinf. Steel	
Sta. 320130	18" Reinf. Conc. or Cast Iron pipe Length 52 ft	19 Cu yd.
	Class A Conc. (1-2-4)	60 lbs.
	Reinf. Steel	
Sta. 323128	3x3' Reinf. Conc. Box Culvert	24.5 Cu yd.
	Class A Conc. (1-2-4)	1613 lbs.
	Reinf. Steel	

6" SUB-BASE REQUIRED

Sta. 310100 to Sta. 312100	Length 200 ft
----------------------------	---------------

9" SUB-BASE REQUIRED

Sta. 314100 to Sta. 317150	Length 350 ft
----------------------------	---------------



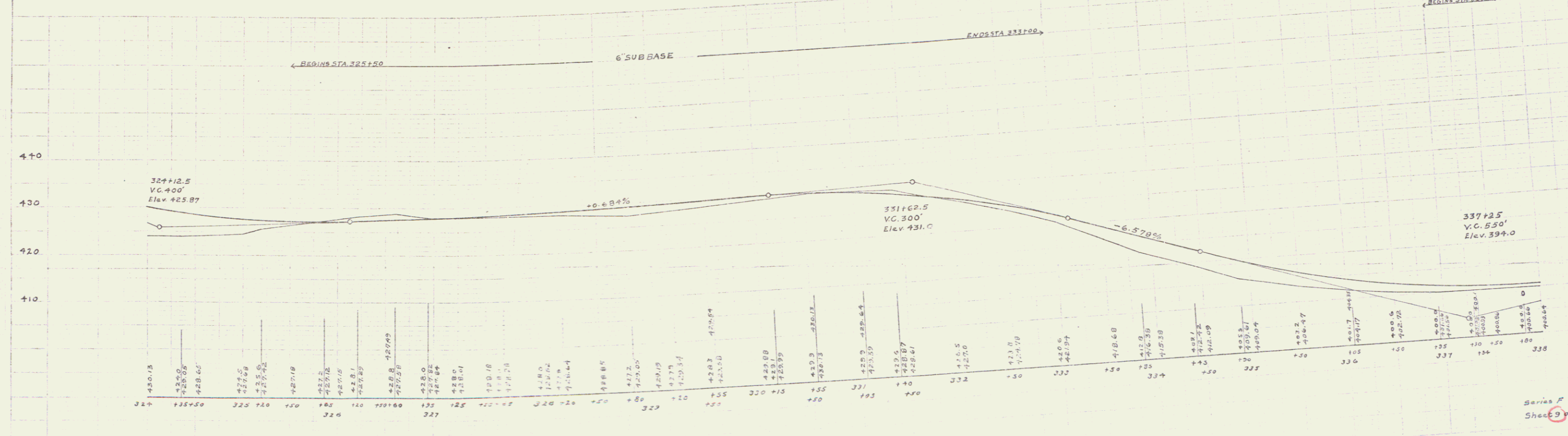
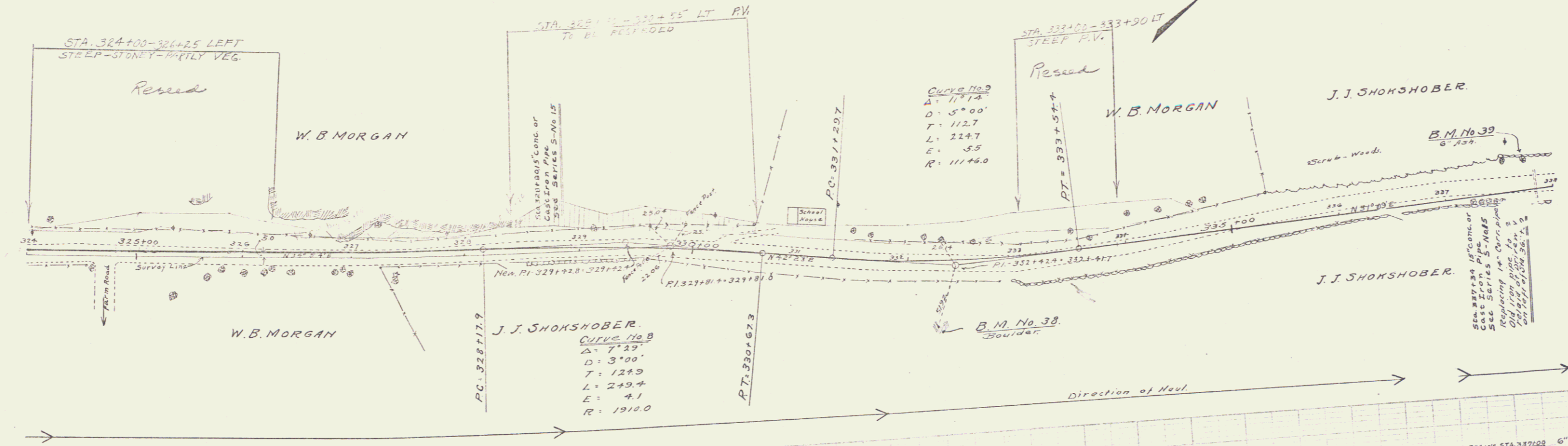
B.M. No 36 Spike in 15" Maple, Left of Sta. 315+14 Elev. 478.14
 B.M. No 37 Spike in 15" Maple, Left of Sta. 321+10 Elev. 430.14

WOOD GUARD RAIL REQUIRED
ON LEFT
 Sta. 324+00 to Sta. 324+30 Length 30 ft
 " 328+60 " Sta. 328+92 " 24 "
 " 337+22 " " 337+46 " 24 "
ON RIGHT
 Sta. 328+50 to Sta. 329+54 Length 104 ft
TOTAL THIS SHEET 130 FT

CABLE GUARD RAIL REQUIRED
ON RIGHT
 Sta. 324+00 to Sta. 324+49 Length 49 ft
 Sta. 325+50 " " 327+60 " 210 ft
 " 336+00 " " 339+00 " 200 ft
TOTAL THIS SHEET 459 FT

NEW CULVERTS REQUIRED
 Sta. 328+00 12" Conc. or Cast Iron Pipe 2.1 Cu. yds.
 Class 'B' Concrete (1-2X-5) 33 lbs.
 Reinf. Steel
 Sta. 337+34 15" Conc. or Cast Iron Pipe 32 ft
 Class 'B' Concrete (1-2X-5) 2.1 Cu. yds.
 Reinf. Steel

6" SUBBASE REQUIRED
 Sta. 325+50 to Sta. 333+00 Length 750 ft
 " 337+00 " " 339+00 " 100 "



B.M. No. 39 Boulder in Pasture, Right of Sta. 332+27 Elev. 421.01
 B.M. No. 39 Spike in 6" Ash, Left of Sta. 337+75 Elev. 402.32

WOOD GUARD REQUIRED

Station	Length
STA 342113 to 342137	24'
344143 to 345107	24'
STA 342113 to 342137	24'
351105 to 353100	115'
TOTAL THIS SHEET	177'

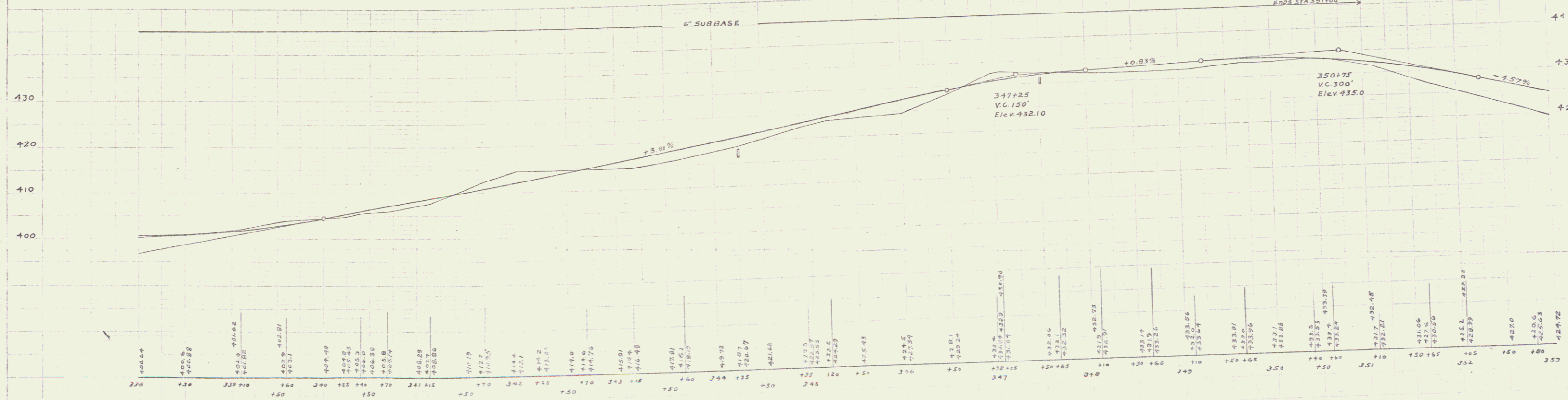
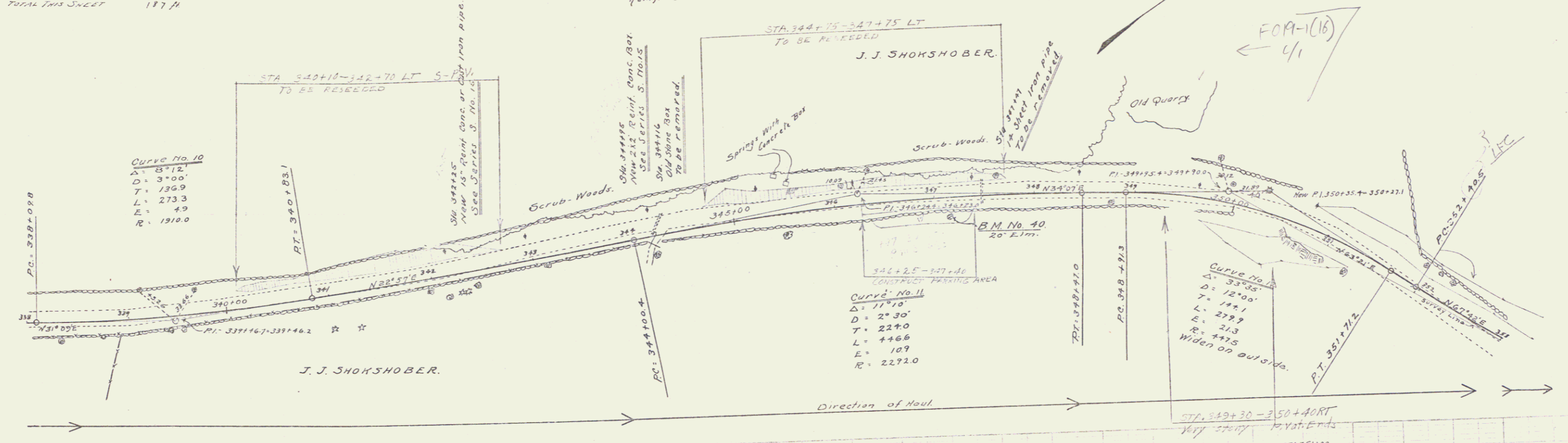
CABLE GUARD REQUIRED

Station	Length
STA 342113 to 342137	24'
347140 to 349100	200'
TOTAL THIS SHEET	536'

NEW CULVERTS REQUIRED

Station	Material	Length
STA 342125	15" Reinf Conc. or Cast Iron Pipe	32'
	Class B Conc. (1-21-3)	21
	Reinf Steel	33
STA 344135	24" Reinf Conc. Box Culvert	99'
	Class A Conc. (1-2-4)	63
	Reinf Steel	63

6" SUB-BASE REQUIRED
 STA 338100 to STA 351100 Length 1300'



B.M. No. 40 Spike in 20" Elm. Right of Sta. 347+10 Elev 430.31

Series No 73B
 Sheet 10 of 73

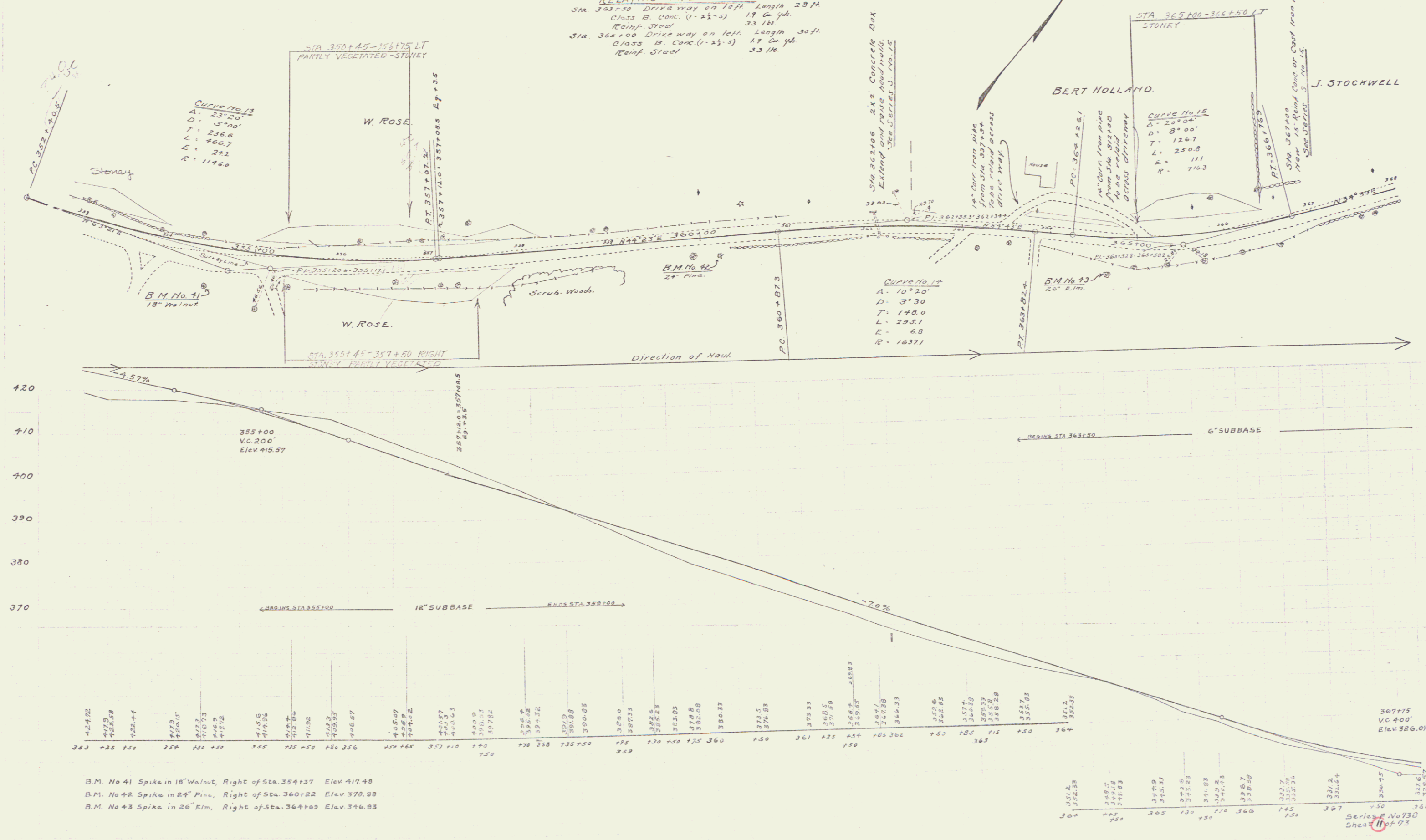
WOOD GUARD REQUIRED ON LEFT
 STA 366+88 to STA 367+12 Length 24 ft
 On Right
 STA 353+00 to STA 353+45 Length 45 ft
 TOTAL THIS SHEET 69 ft

CABLE GUARD RAIL REQUIRED ON LEFT
 STA 357+00 to STA 362+12 Length 512 ft
 On Right
 STA 359+50 to STA 363+50 Length 400 ft
 STA 366+88 to STA 368+00 Length 112 ft
 TOTAL THIS SHEET 824 ft

NEW CULVERTS REQUIRED
 STA 362+00 2x2 Reinf Conc. Extension Class A Conc. (1-2-4) 34 cu yd Reinf. Steel 324 lbs
 STA 367+00 12" Reinf Conc. or Cast Iron pipe Length 36 ft Class B Conc. (1-2-3) 21 cu yd Reinf. Steel 33 lbs
RELAYING PIPE CULVERTS
 STA 363+50 Drive way on left Length 28 ft Class B Conc. (1-2-3) 17 cu yd Reinf. Steel 33 lbs
 STA 365+00 Drive way on left Length 30 ft Class B Conc. (1-2-3) 17 cu yd Reinf. Steel 33 lbs

12" SUB-BASE REQUIRED
 STA 355+00 to STA 359+00 Length 400 ft 12x3.5 Length 400 ft
6" SUB-BASE REQUIRED
 STA 362+50 to STA 365+00 Length 450 ft

9 VT 738 1924 11 73



B.M. No 41 Spike in 18" Walnut, Right of Sta. 354+37 Elev 417.48
 B.M. No 42 Spike in 24" Pine, Right of Sta. 360+22 Elev 378.88
 B.M. No 43 Spike in 26" Elm, Right of Sta. 364+03 Elev 374.83

Series E No 730
 Sheet 11 of 73

WOOD GUARD RAIL REQUIRED

ON LEFT		
Sta. 370+88 to Sta. 371+12	Length	24 ft.
" 375+66 " " 375+30	"	24 ft.
" 379+23 " " 379+47	"	24 "
ON RIGHT		
Sta. 375+66 to Sta. 375+30	Length	24 ft.
" 377+87 " " 379+47	"	160 ft.
" 383+75 " " 384+00	"	25 ft.
TOTAL THIS SHEET		281

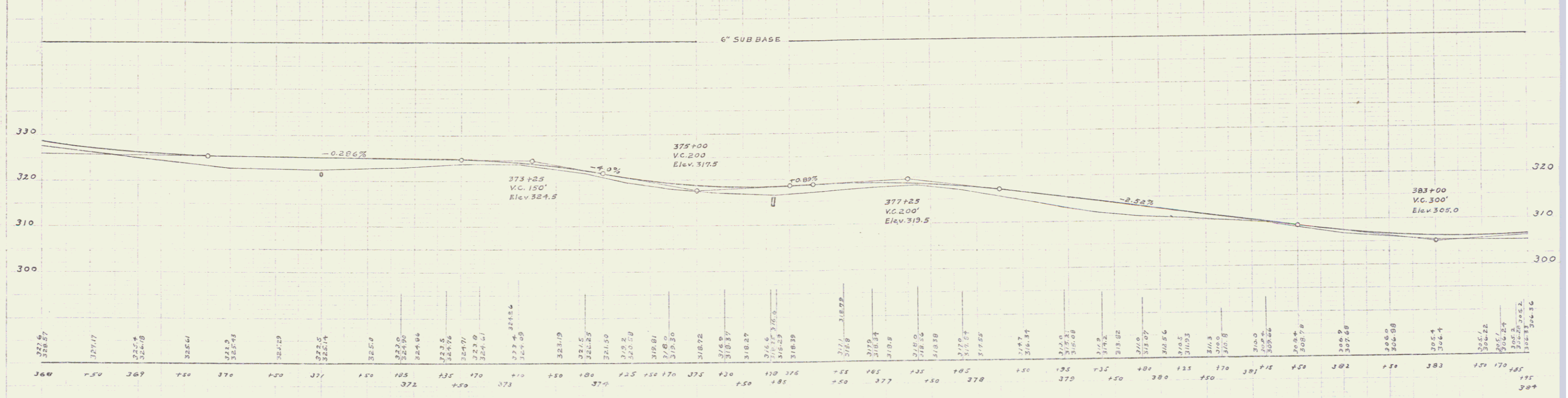
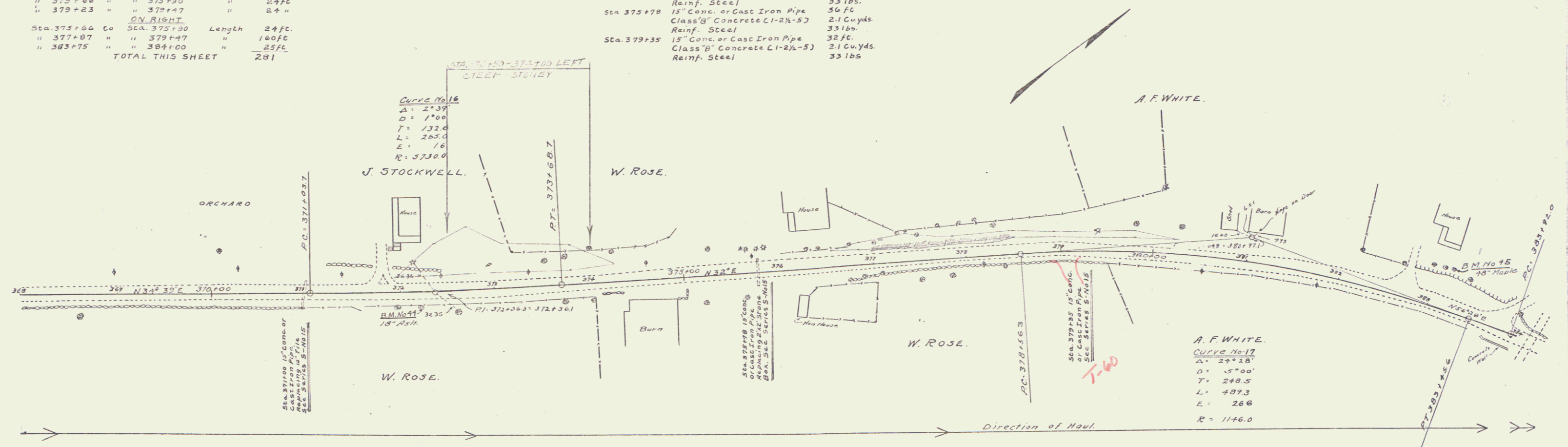
CABLE GUARD RAIL REQUIRED ON RIGHT
Sta. 368+00 to Sta. 372+56 Length 456 ft.

NEW CULVERTS REQUIRED

Sta. 371+00	13" Conc. or Cast Iron Pipe	40 ft.
	Class 'B' Concrete (1-2 1/2-5)	2.1 Cu. Yds.
	Reinf. Steel	33 lbs.
Sta. 375+78	15" Conc. or Cast Iron Pipe	56 ft.
	Class 'B' Concrete (1-2 1/2-5)	2.1 Cu. Yds.
	Reinf. Steel	33 lbs.
Sta. 379+35	18" Conc. or Cast Iron Pipe	32 ft.
	Class 'B' Concrete (1-2 1/2-5)	2.1 Cu. Yds.
	Reinf. Steel	33 lbs.

6" SUBBASE REQUIRED
Sta. 368+00 to Sta. 384+00 Length 1600 ft.

738 1926 12 73



B.M. No. 44 Spike in 18" Ash, Right of Sta. 372+21 Elev. 328.60
B.M. No. 45 Spike in 42" Maple, Left of Sta. 383+15 Elev. 310.12

Series F No. 738
Sheet 12 of 73

WOOD GUARD RAIL REQUIRED

Sta	to Sta	Length
302+00	to 302+172	Length 72 ft
301+00	to 301+55	Length 55 ft
302+38	to 302+62	24
306+38	to 307+12	24
TOTAL THIS SHEET 175 ft		

CABLE GUARD RAIL REQUIRED

Sta	to Sta	Length
300+70	to 300+100	Length 30 ft

NEW CULVERTS REQUIRED

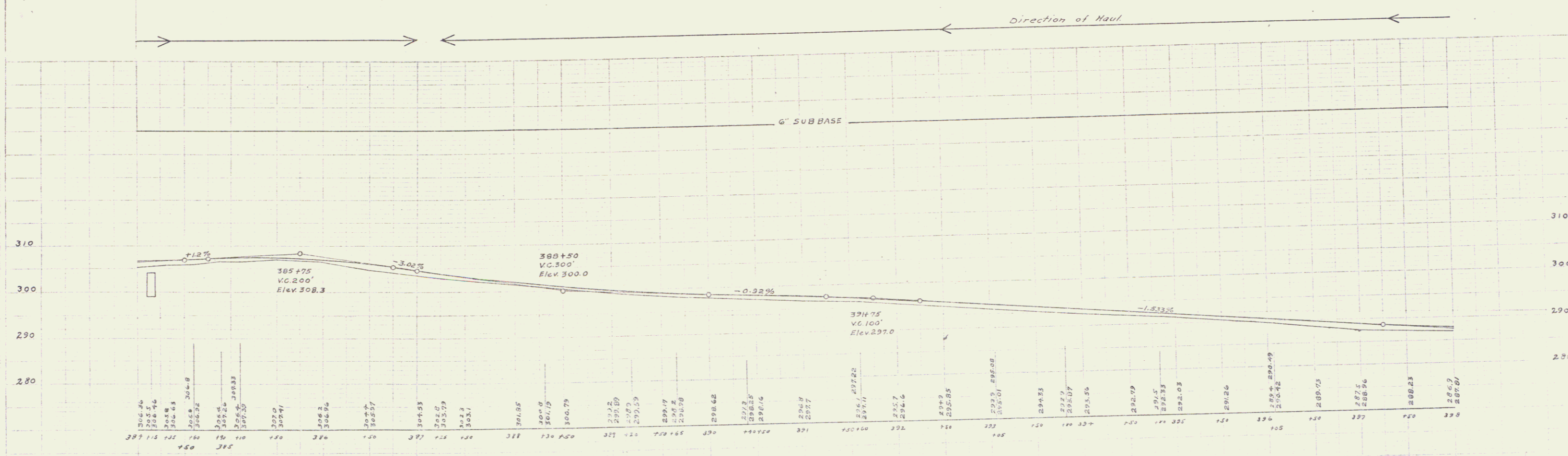
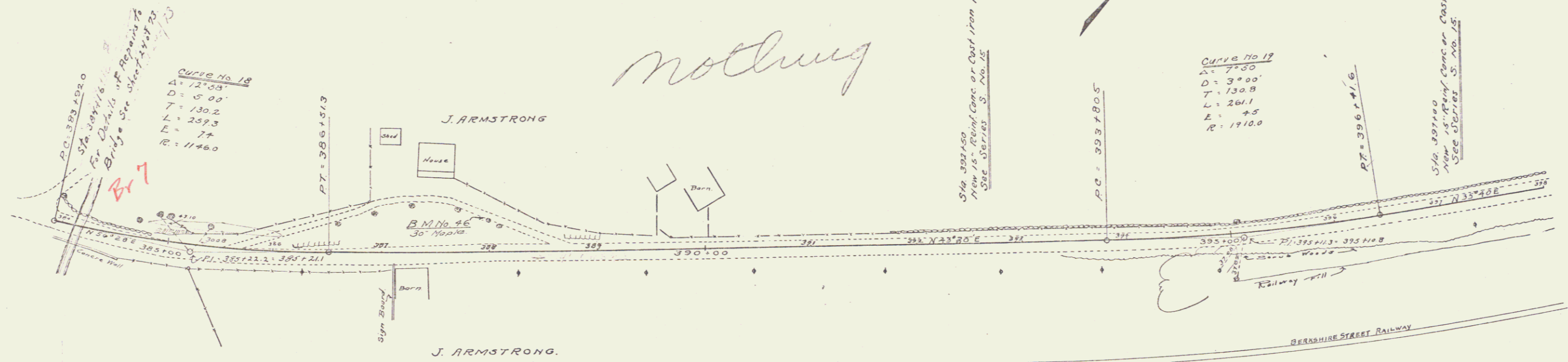
Sta 392+50	15" Reinf Conc. or Cast Iron pipe	Length 32 ft
	Class B. Conc. (1-21-3)	21 Cuyd
	Reinf Steel	33 lbs
Sta 307+00	15" Reinf Conc. or Cast Iron pipe	Length 36 ft
	Class B. Conc. (1-21-3)	21 Cuyd
	Reinf Steel	33 lbs

6" SUB-BASE REQUIRED

Sta	to Sta	Length
304+00	to 308+00	Length 1400 ft

738 1326 13 73

Hobbing



B.M. No 46 Spike in 30" Maple, Left of Sta. 308+00 Elev. 305.93

Series F No 735
Sheet 13 of 73

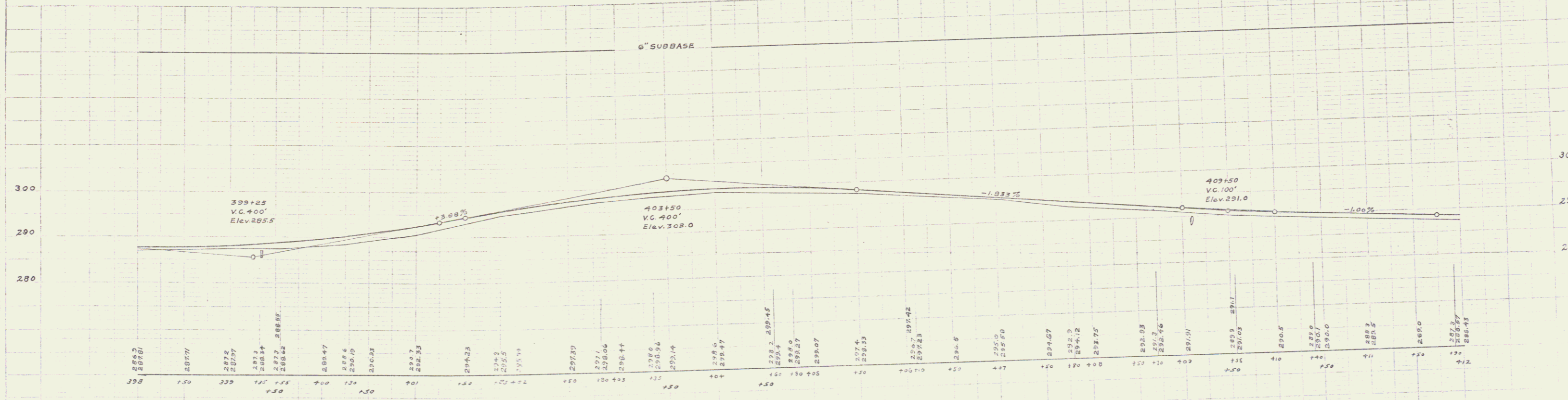
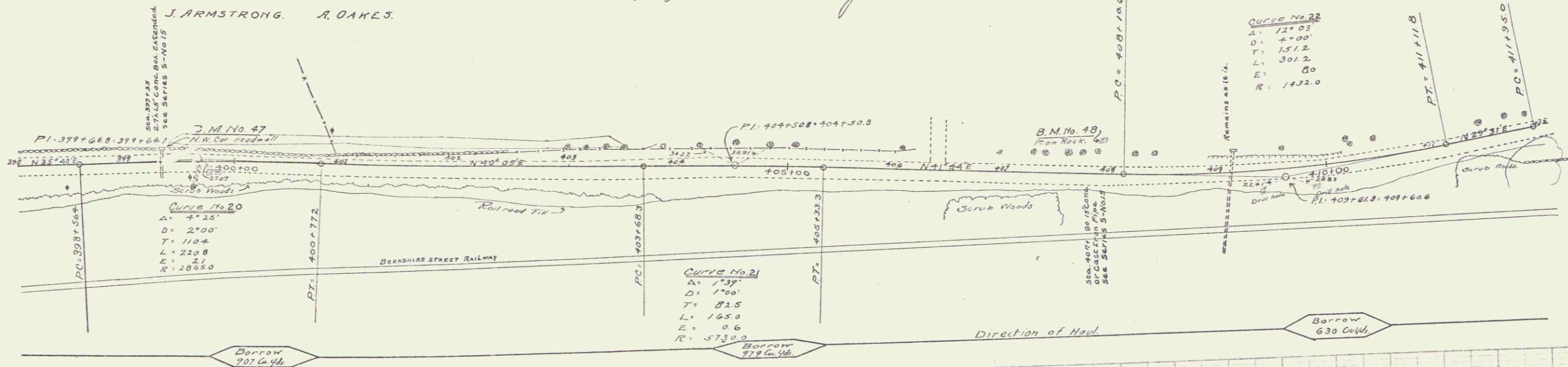
Nothing

WOOD GUARD RAIL REQUIRED ON RIGHT
 Sta. 399+23 to 399+47 Length 24 ft
 " 407+58 to 407+92 " 34 ft
TOTAL THIS SHEET 40 ft

CABLE GUARD RAIL REQUIRED ON LEFT
 Sta. 398+00 to Sta. 412+00 Length 1400 ft

NEW CULVERTS REQUIRED
 Sta. 399+35 27x15" Conc. Box Extended 31 Cu. Yds.
 Class "A" Concrete (1-2-4) 170 lbs.
 Reinf. Steel 36 ft
 Sta. 407+80 15" Conc. or Cast Iron Pipe 21 Cu. Yds.
 Class "B" Concrete (1-2h-3) 33 lbs.
 Reinf. Steel

6" SUBBASE REQUIRED
 Sta. 398+00 to Sta. 412+00 Length 1400 ft



B.M. 47 N.W. Corner of Headwall, Left of Sta. 399+35 Elev. 287.60
 B.M. 18 Drill Hole on Rock, Left of Sta. 407+92 Elev. 288.04

Series P No 73B
 Sheet 17 of 73

WOOD GUARD RAIL REQUIRED

Sta	From Sta	To Sta	Length	Material
412+70	to Sta	414+02	Length 24 M	12" x 12" x 12" Posts
423+00	to Sta	423+22	24	12" x 12" x 12" Posts
418+22	to Sta	418+75	Length 48 M	12" x 12" x 12" Posts
418+75	to Sta	419+02	24	12" x 12" x 12" Posts
422+04	to Sta	423+22	18	12" x 12" x 12" Posts
			80	
			208	TOTAL THIS SHEET

CABLE GUARD RAIL REQUIRED

Sta	From Sta	To Sta	Length
412+00	to Sta	415+92	Length 392 M

NEW CULVERTS REQUIRED

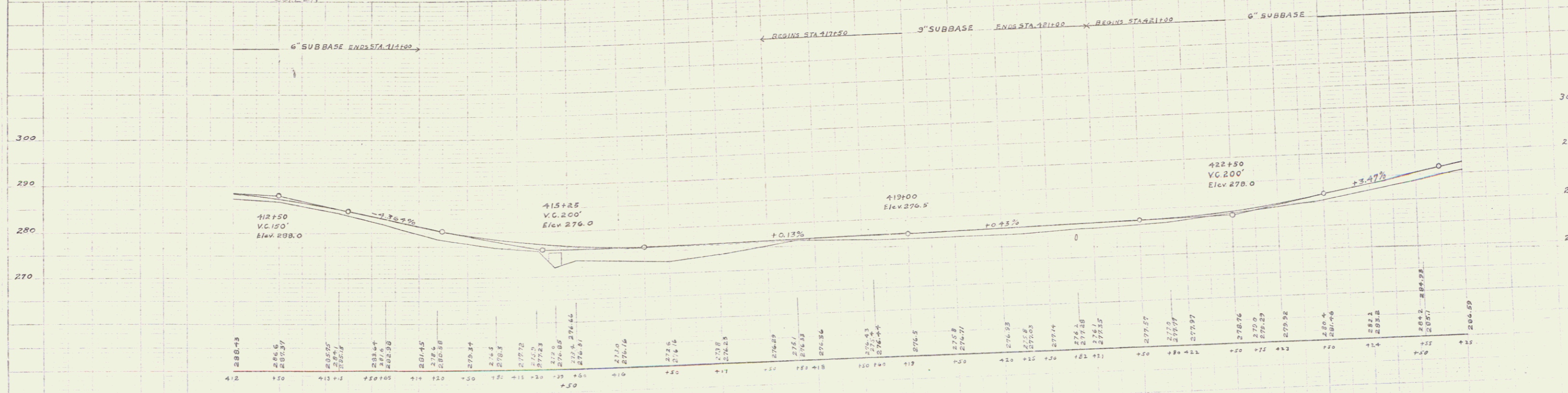
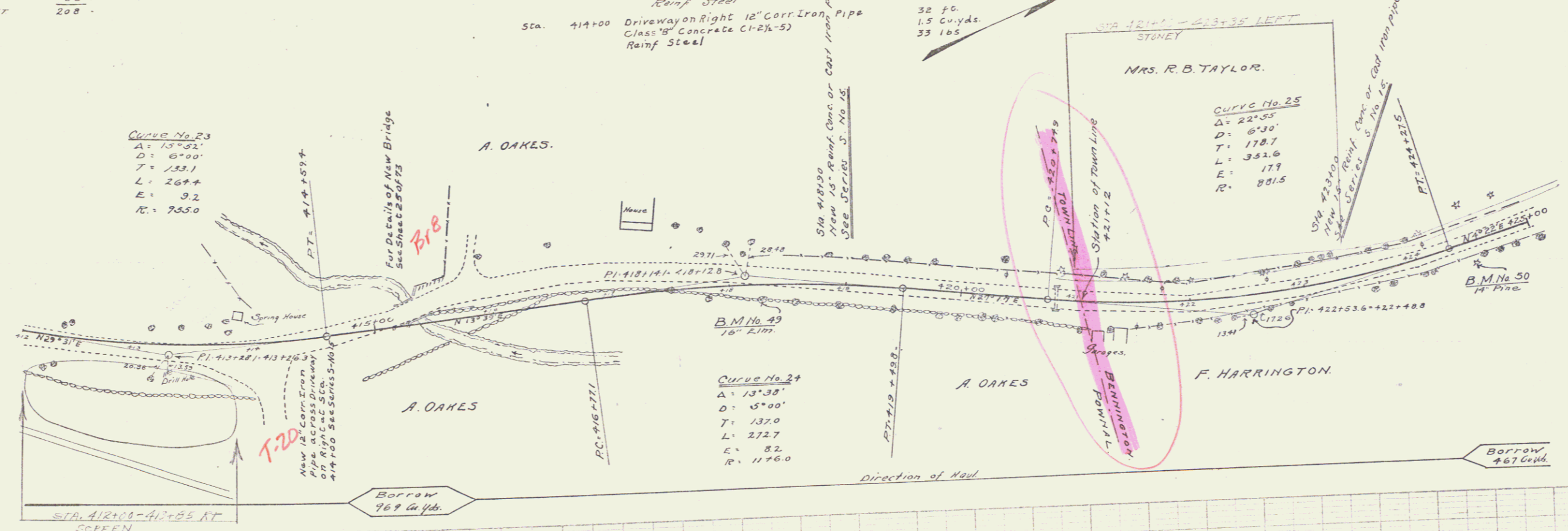
Sta	Description	Length	Material
418+90	15" Reinf Conc. or Cast Iron pipe	32 ft	21 Cu Yds
	CLASS B Conc. (1-2 1/2-5)		33 lbs
	Reinf Steel		
423+00	15" Reinf Conc. or Cast Iron Pipe	36 ft	21 Cu Yds
	CLASS B Conc. (1-2 1/2-5)		33 lbs
	Reinf Steel		
414+00	Driveway on Right 12" Cor. Iron Pipe	32 ft	1.5 Cu Yds
	Class B Concrete (1-2 1/2-5)		33 lbs
	Reinf Steel		

6" SUB-BASE REQUIRED

Sta	From Sta	To Sta	Length
412+00	to Sta	414+00	Length 200 ft
421+00	to Sta	423+00	Length 200 ft
			400 M

9" SUB-BASE REQUIRED

Sta	From Sta	To Sta	Length
417+50	to Sta	421+00	Length 350 ft



BM. No 49 Spike in 16" Elm, Right of Sta. 418+29 Elev 274.93
 BM. No 50 Spike in 14" Pine, Right of Sta. 424+50 Elev 282.55

Series F No 73B
 Sheet 13 of 13

WOOD GUARD RAIL REQUIRED
 ON LEFT
 Sta. 428+53 to Sta. 428+77 Length 24ft
 " 438+00 " " 438+24 " 24"
 ON RIGHT
 Sta. 437+75 to Sta. 439+13 Length 128ft
 TOTAL THIS SHEET 176ft

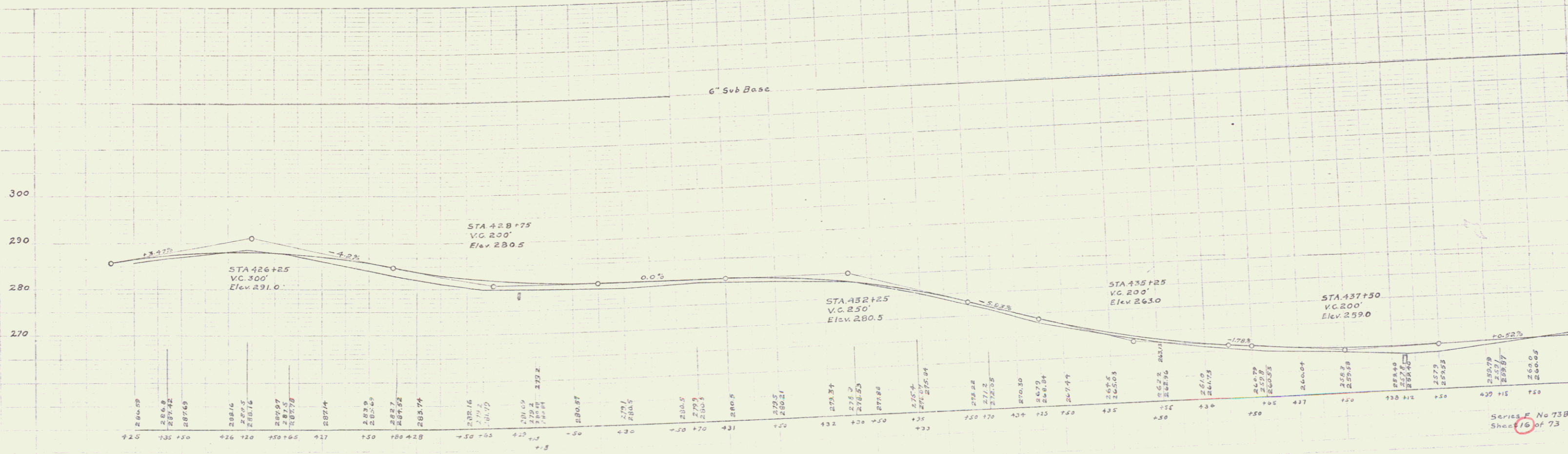
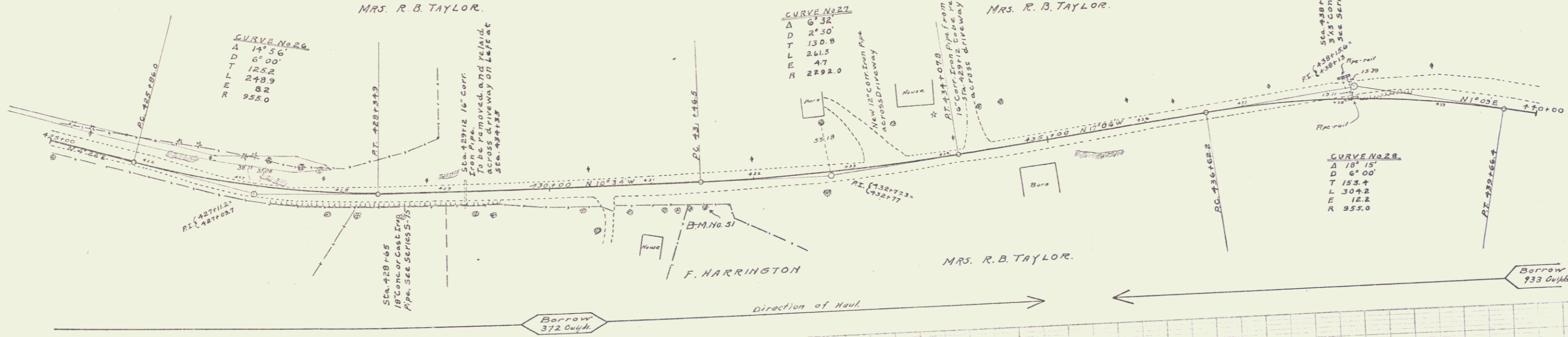
CABLE GUARD RAIL REQUIRED
 ON RIGHT
 Sta. 427+00 to 429+16 Length 216ft

NEW CULVERTS REQUIRED
 Sta. 428+65 18" Conc. or Cast Iron Pipe 56ft
 Class B Concrete (1-2X-5) 2.7 Cu. yds
 Reinf. Steel 33 lbs.
 Sta. 438+12 3X3 Concrete Box 17.7 Cu. yds
 Class A Concrete (1-2-4) 1164 lbs.
 Reinf. Steel

6" SUBBASE REQUIRED
 Sta. 425+00 to 440+00 Length 1500ft

nothing

RELAYING CULVERTS
 Sta. 433+55 Driveway on Left 32ft
 Relaying 12" Corr. Iron Pipe 1.5 Cu. yds
 Class B Concrete (1-2X-5) 33 lbs.
 Steel
 Sta. 434+35 Driveway on Left 26 ft.
 Relaying 15" Corr. Iron Pipe 23 Cu. yds
 Class B Concrete (1-2X-5) 33 lbs.
 Reinf. Steel



B.M. 51 Spike in 18" Maple on Right of Sta. 431+50 Elev. 280.88

WOOD GUARD RAIL REQUIRED

ON LEFT		ON RIGHT	
Sta 469+10 to Sta 469+72	Length 24ft	Sta 465+00 to Sta 465+48	Length 48ft
" 465+72 " " 467+00	" 128 "	" 467+00 " " 469+72	" 24 "
TOTAL THIS SHEET 244ft		TOTAL THIS SHEET 244ft	

CABLE GUARD RAIL REQUIRED
ON LEFT
Sta. 465-00 to 467+00 Length 200 ft.

NEW CULVERTS REQUIRED

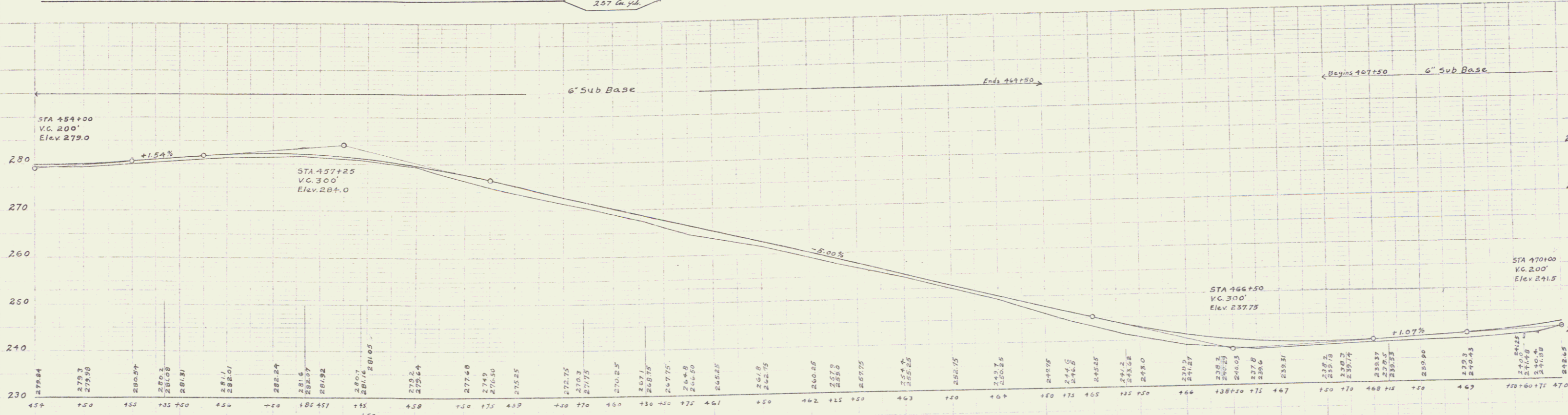
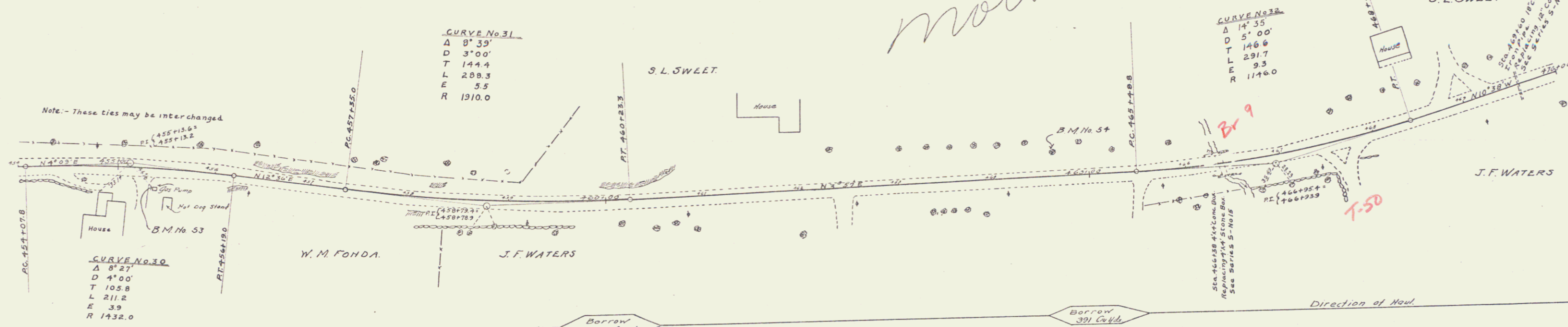
Sta. 466+38	4'x4' Concrete Box	21.8 Cu. yds
" 467+50	Class "A" Concrete (1-2-4)	1434 lbs.
	Reinf. Steel	10 FC.
Sta 469+60	18" Conc. or Cast Iron Pipe	2.7 Cu. yds
	Class "B" Concrete (1-2 1/2-5)	33 lbs.
	Reinf. Steel	

6" SUBBASE REQUIRED

Sta. 454+00 to Sta. 464+50	Length 1050 FC
" 467+50 " " 470+00	" 250 "
TOTAL THIS SHEET	1300 FC

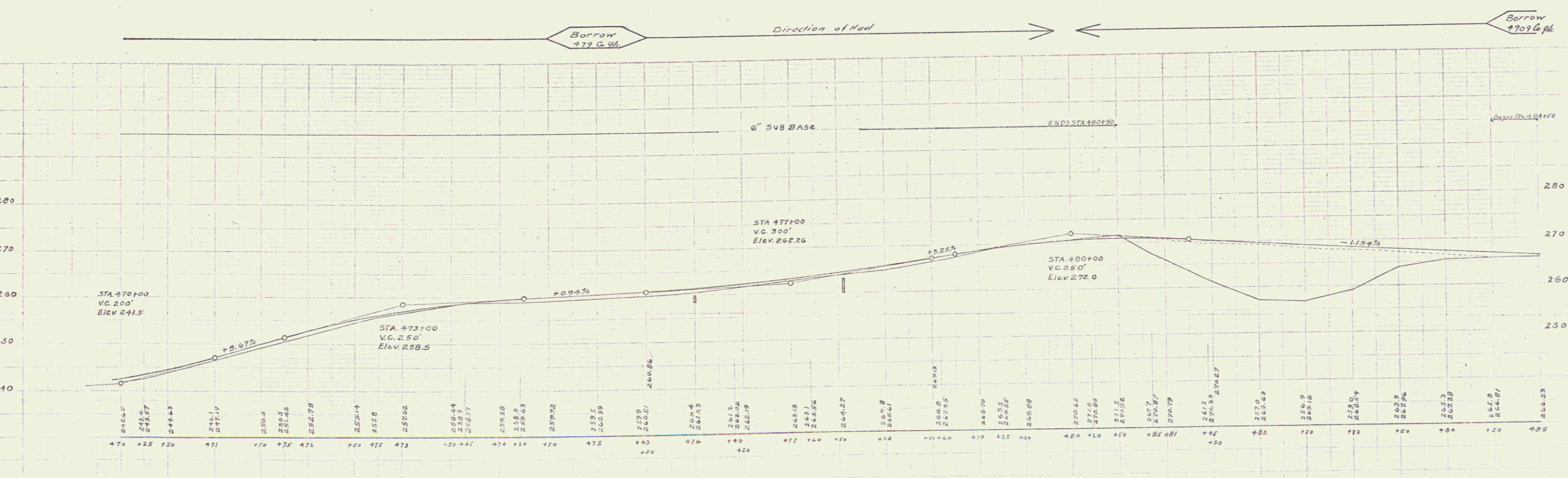
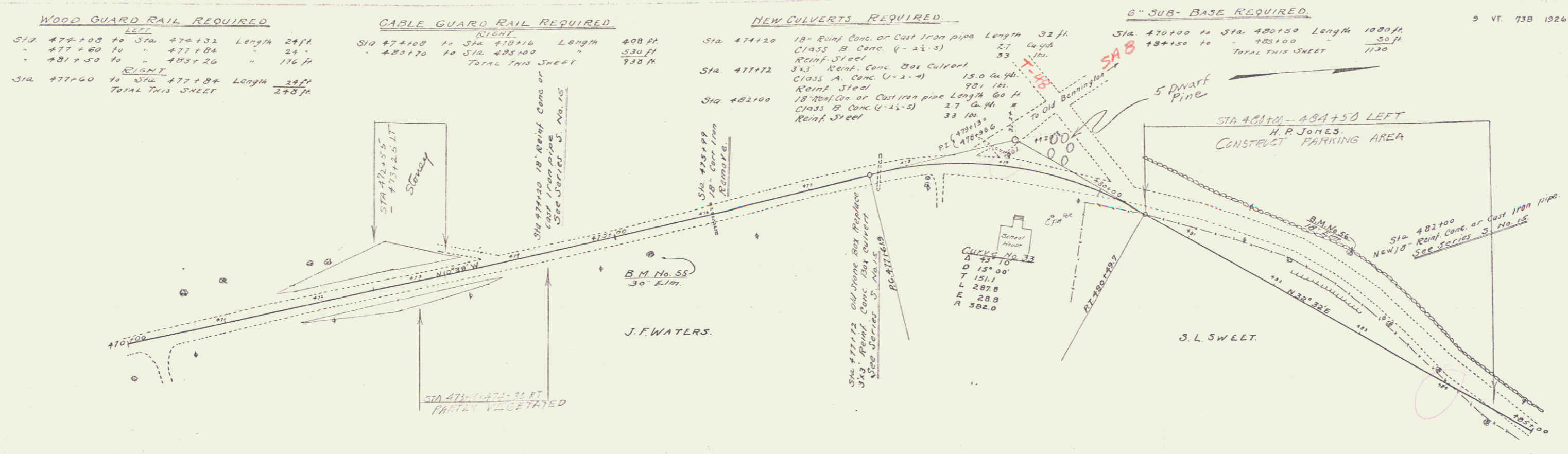
73 B 1926 18 73

nothing



B.M. No 53 S.W. Corner of Foundation of Tidal Gas Pump, Right of Sta 455+36 Elev. 280.41
B.M. No 54 Spike in 32 Elm Tree, Left of Sta 464+62 Elev. 246.54

Series F No 73B
Sheet 18 of 73



B.M. No 55 Spike in 30' Elm Tree, Right of Sta. 475+31 Elev. 255.66
 B.M. No 56 Spike in 18' Elm Tree, Left of Sta. 482+50 Elev. 270.84

Series F No 730
 Sheet 19 of 73

WOOD GUARD RAIL REQUIRED

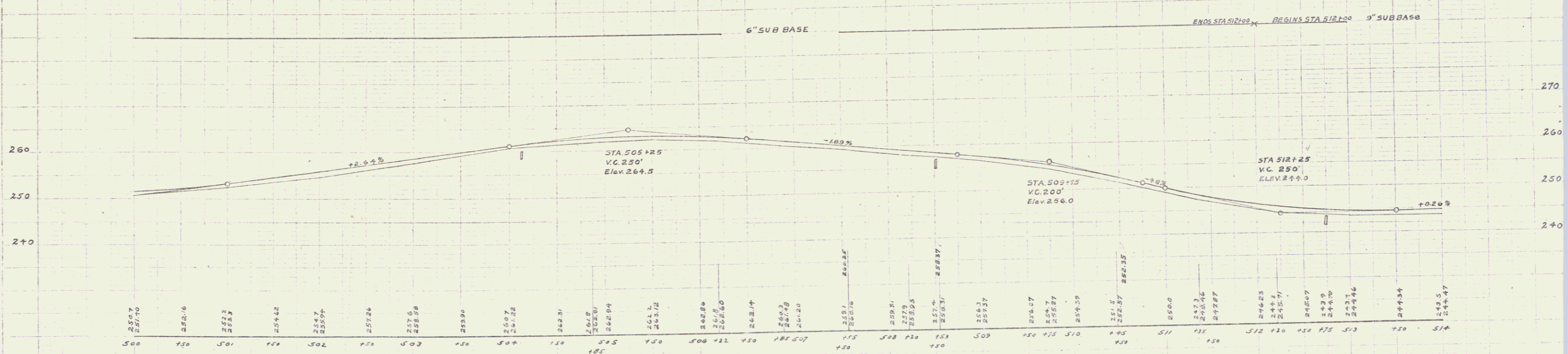
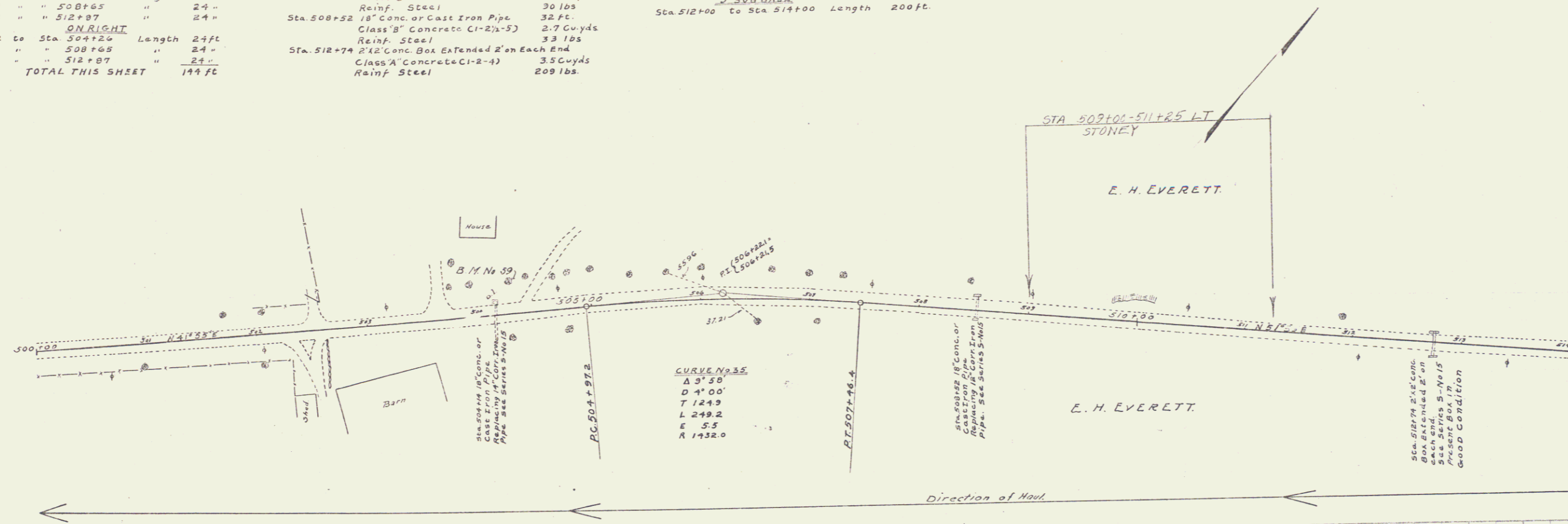
ON LEFT			
Sta. 504+02 to Sta. 504+26	Length	24 ft	
" 508+41 " " 508+65	"	24 "	
" 512+63 " " 512+87	"	24 "	
ON RIGHT			
Sta. 504+02 to Sta. 504+26	Length	24 ft	
" 508+41 " " 508+65	"	24 "	
" 512+63 " " 512+87	"	24 "	
TOTAL THIS SHEET		144 ft	

NEW CULVERTS REQUIRED

Sta. 504+14 18" Conc. or Cast Iron Pipe	36 ft
Class "B" Concrete (1-2 1/2-5)	2.4 Cu yds.
Reinf. Steel	30 lbs
Sta. 508+52 18" Conc. or Cast Iron Pipe	32 ft
Class "B" Concrete (1-2 1/2-5)	2.7 Cu yds.
Reinf. Steel	33 lbs
Sta. 512+74 24" Conc. Box Extended 2' on Each End	3.5 Cu yds.
Class "A" Concrete (1-2-4)	3.5 Cu yds.
Reinf. Steel	209 lbs.

6" SUBBASE
Sta. 500+00 to Sta. 512+00 Length 1200 ft.

9" SUBBASE
Sta. 512+00 to Sta. 514+00 Length 200 ft.



B.M. No. 59 Spike in 30" Elm Tree, Left of Sta. 504+29 Elev. 264.48

WOOD GUARD RAIL REQUIRED

Direction	Sta. Range	Length
LEFT	518+59 to 519+52.3	24 ft
RIGHT	526+31 to 526+55	24 ft
RIGHT	518+59 to 519+83	24 ft
RIGHT	526+31 to 526+55	24 ft
TOTAL THIS SHEET		

NEW CULVERTS REQUIRED

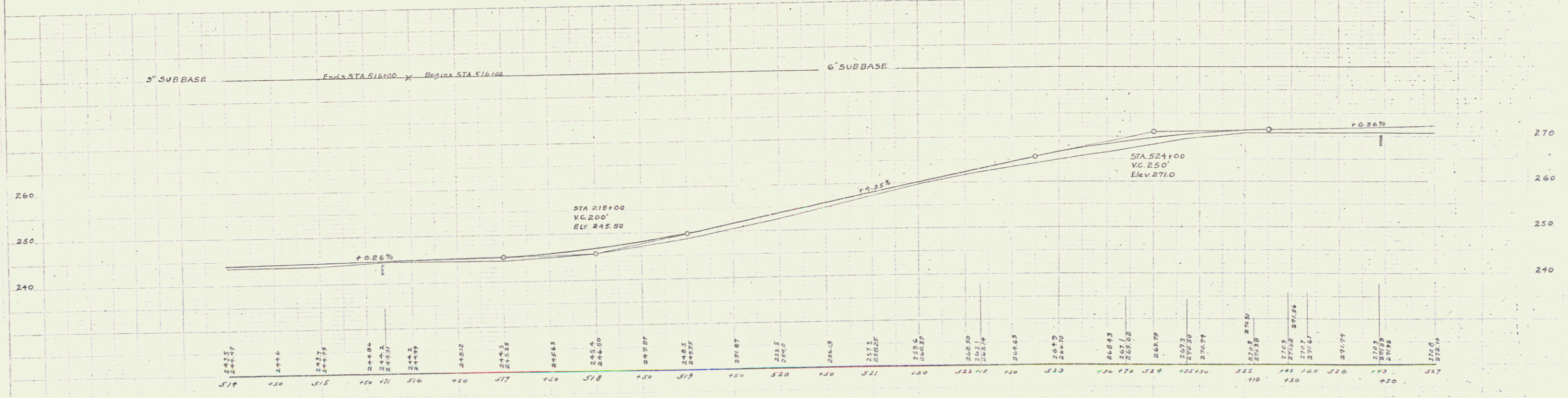
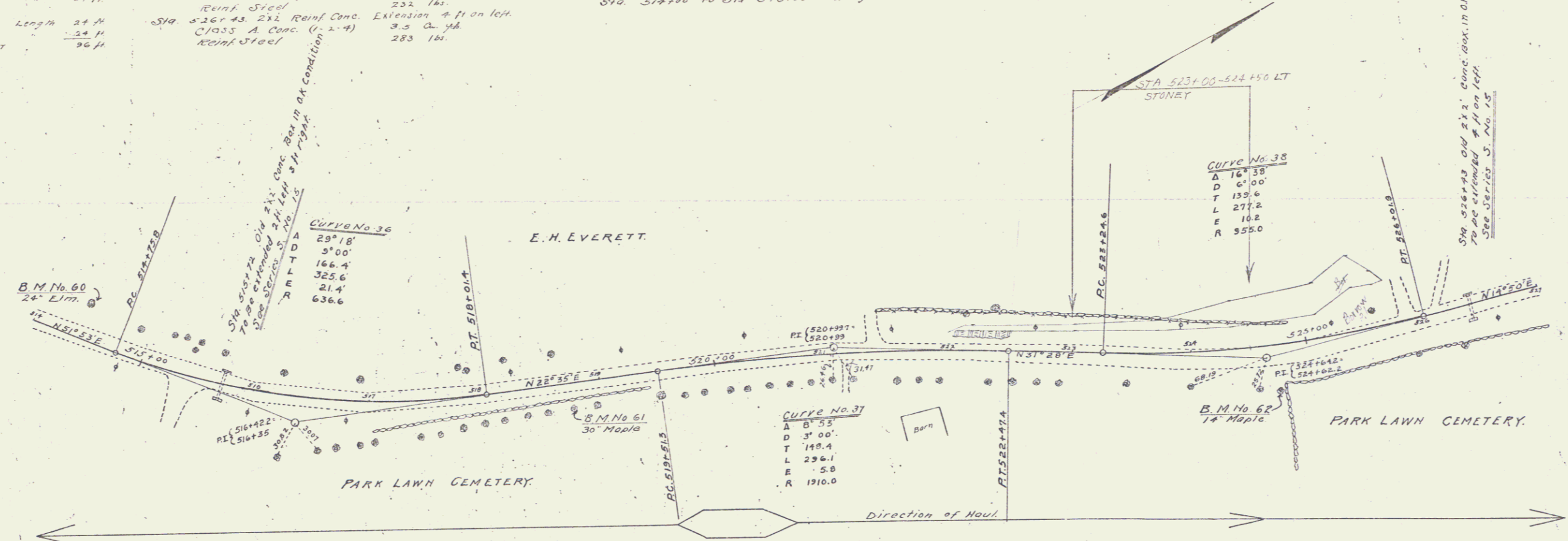
Sta. 518+72	2x2 Reinf Conc. Extensions 2 ft left, 3 ft right	3.1 cu. yd.
	CLASS A Conc. (1-2-4)	235 lbs.
	Reinf. Steel	
Sta. 516+43	2x2 Reinf Conc. Extension 4 ft on left.	3.5 cu. yd.
	CLASS A Conc. (1-2-4)	283 lbs.
	Reinf. Steel	

6" SUB BASE REQUIRED

Sta. 516+00 to 519+00	Length 1100 ft.
-----------------------	-----------------

9" SUB BASE REQUIRED

Sta. 514+00 to 519+00	Length 200 ft.
-----------------------	----------------



B.M. No 60 Spike in 24" Elm Left of STA 514+30 Elev 243.20
 B.M. No 61 Spike in 30" Maple Right of STA 518+75 Elev 248.07
 B.M. No 62 Spike in 14" Maple Right of STA 524+72 Elev 263.65

filling

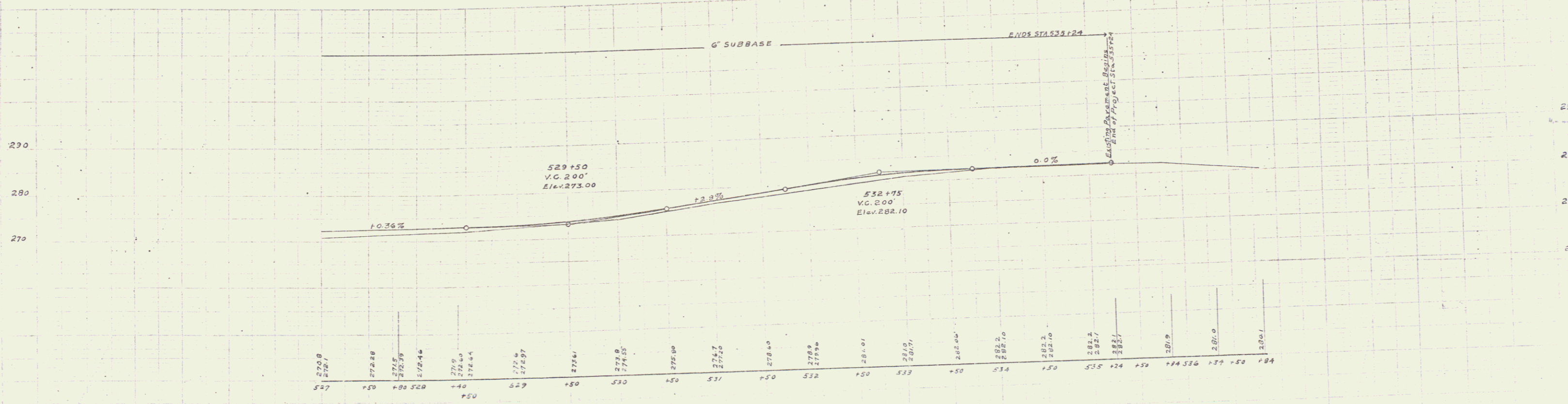
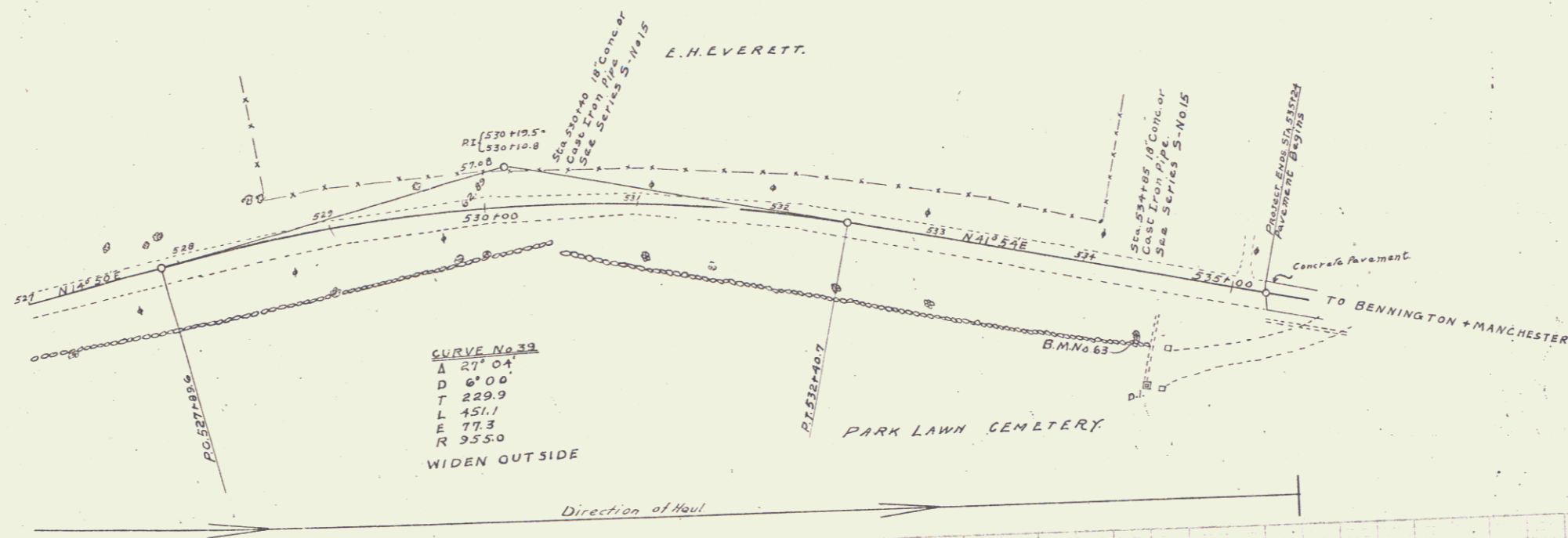
WOOD GUARD RAIL REQUIRED

Sta 530+22 to Sta 530+52	ON LEFT	Length	24 ft
Sta 534+88 " " 535+12	"	"	24 "
Sta 530+28 to Sta 530+52	ON RIGHT	Length	24 ft
" 534+88 " " 535+12	"	"	24 "
TOTAL THIS SHEET			96 ft

NEW CULVERTS REQUIRED

Sta. 530+10	18" Conc or Cast Iron Pipe	36 ft.
	Class B Concrete CI-2x-5J	2.7 Cuyds.
	Reinf. Steel	33 lbs.
Sta. 534+85	18" Conc or Cast Iron Pipe	32 ft.
	Class B Concrete CI-2x-5J	2.4 Cuyds.
	Reinf. Steel	33 lbs.

6" SUBBASE
Sta. 527+00 to Sta. 535+24 Length 824 ft.



B.M. No 63 Spike in 24" Maple, Right of STA 534+45 Elev. 284.87