

**WOOD GUARD RAIL REQUIRED**

Direction	Start Sta	End Sta	Length
LEFT	518+59	518+83	24 ft
RIGHT	518+59	518+83	24 ft
TOTAL THIS SHEET			48 ft

**NEW CULVERTS REQUIRED**

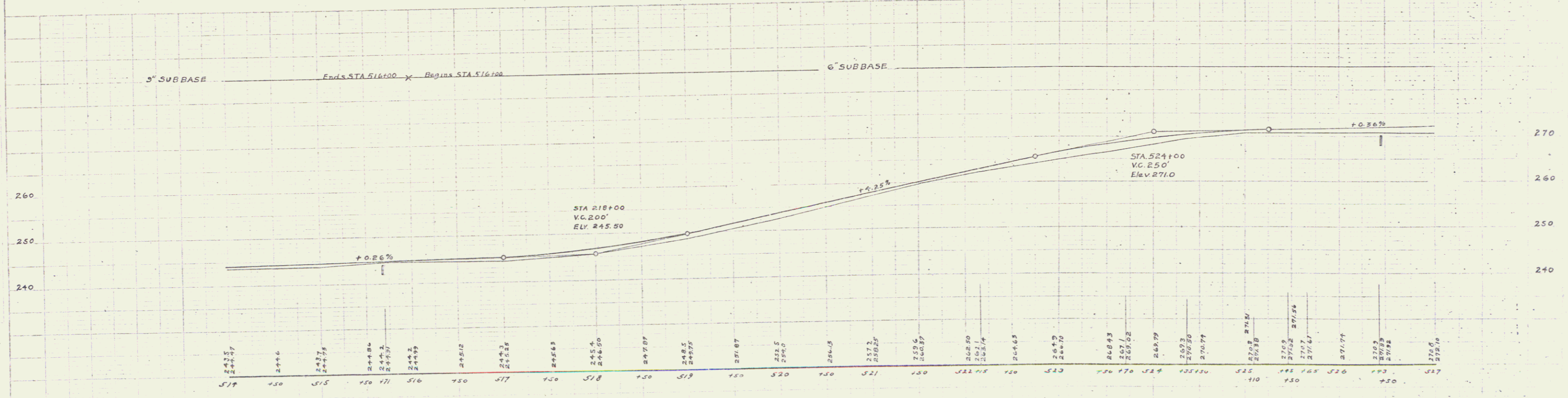
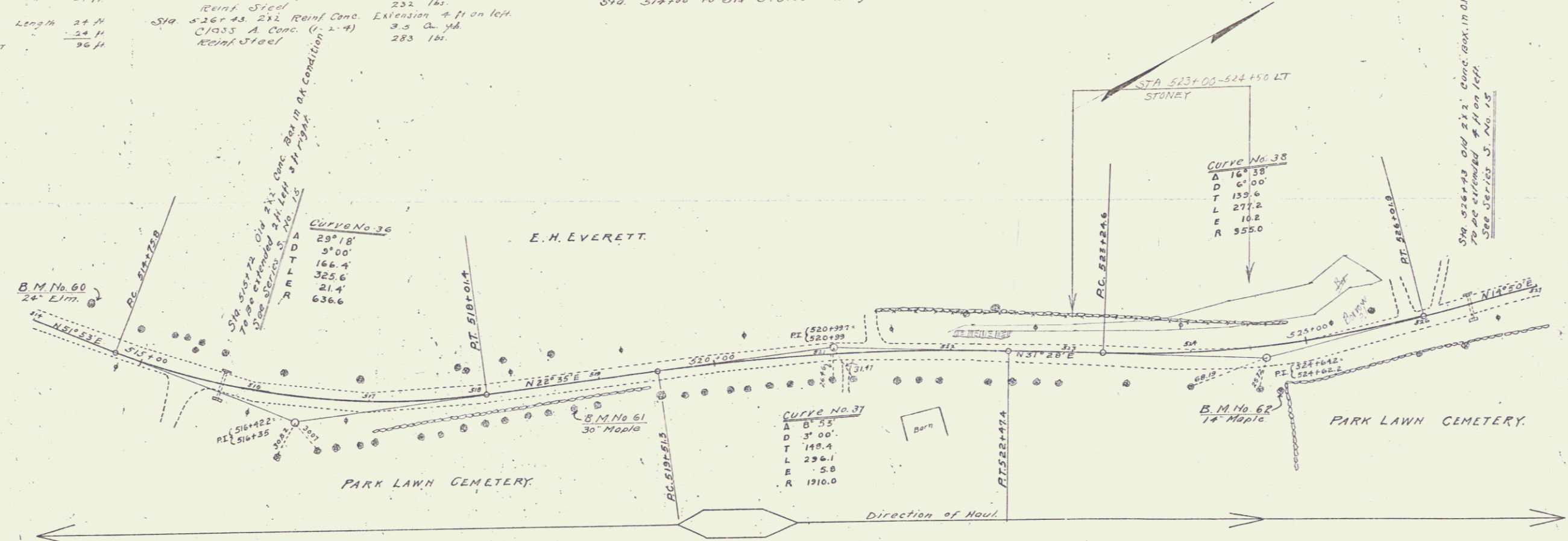
Station	Material	Length
Sta 515+72	2x2 Reinf Conc. Extensions 2 ft left, 3 ft right	5 ft
	CLASS A Conc. (1-2-4)	235 ft
	Reinf Steel	
Sta 516+43	2x2 Reinf Conc. Extension 4 ft on left	3.5 ft
	CLASS A Conc. (1-2-4)	283 ft
	Reinf Steel	

**6" SUB BASE REQUIRED**

Station	Length
Sta 516+00 to Sta 527+00	1100 ft

**9" SUB BASE REQUIRED**

Station	Length
Sta 514+00 to Sta 516+00	200 ft



B.M. No 60 Spike in 24" Elm Left of STA 514+30 Elev 243.20  
 B.M. No 61 Spike in 30" Maple Right of STA 518+75 Elev 248.07  
 B.M. No 62 Spike in 14" Maple Right of STA 524+72 Elev 263.65