

WOOD GUARD RAIL REQUIRED

Station	Length	Notes
Sta 469+10 to Sta 469+72	24ft	ON LEFT
Sta 465+00 to Sta 465+48	48ft	ON RIGHT
" 465+72 " " 467+00	128 "	"
" 469+10 " " 469+72	24 "	"
TOTAL THIS SHEET	224ft	

CABLE GUARD RAIL REQUIRED

Station	Length	Notes
Sta. 465-00 to 467+00	200 ft.	ON LEFT

NEW CULVERTS REQUIRED

Sta. 464+38	4'x4' Concrete Box	21.8 Cu. yds
	Class "A" Concrete (1-2-4)	1434 lbs.
	Reinf. Steel	10 FC.
Sta 469+60	18" Conc. or Cast Iron Pipe	2.7 Cu. yds
	Class "B" Concrete (1-2 1/2-5)	33 lbs.
	Reinf. Steel	

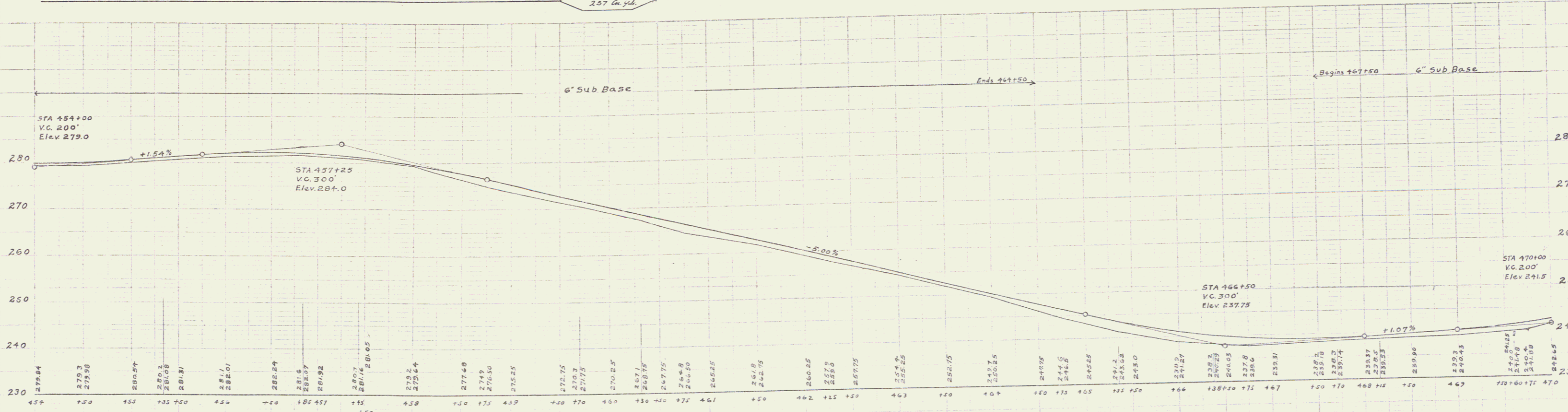
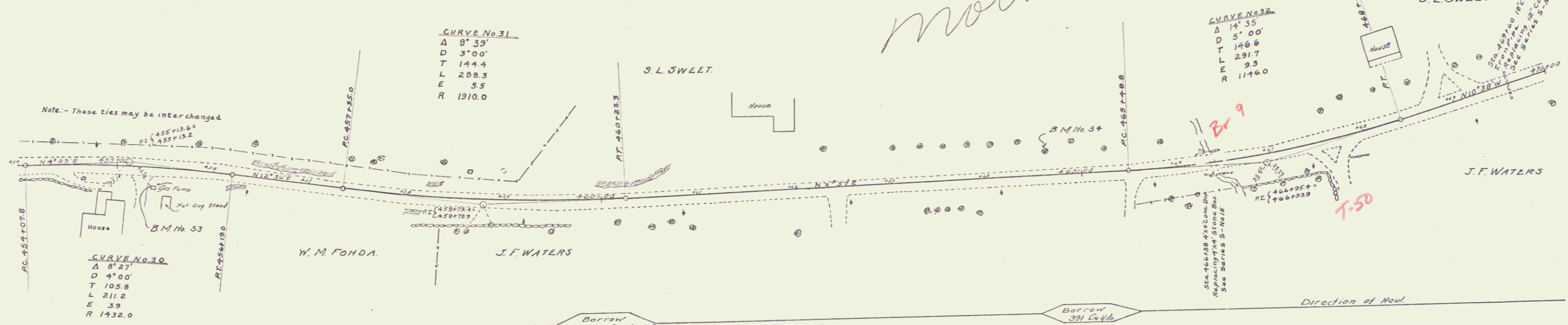
6" SUBBASE REQUIRED

Sta. 454+00 to Sta. 464+50	Length	1050 FC
" 467+50 " " 470+00	"	250 "
TOTAL THIS SHEET		1300 FC

73 B 1926 18 73

J. L. Sweet

nothing



B.M. No 53 S.W. Corner of Foundation of Tidal Gas Pump, Right of Sta 455+36 Elev. 280.41
 B.M. No 54 Spike in 32 Elm Tree, Left of Sta 464+62 Elev. 246.54

Series F No 73B
 Sheet 18 of 73