

**WOOD GUARD RAIL REQUIRED**

Sta	to Sta	Length
441100	to 442112	24 ft
440130	to 448162	24
443173	to 453197	24
RIGHT		
441175	to 442175	Length 120 ft
448130	to 448162	24
452105	to 453197	192
TOTAL THIS SHEET		
408 ft		

**NEW CULVERTS REQUIRED**

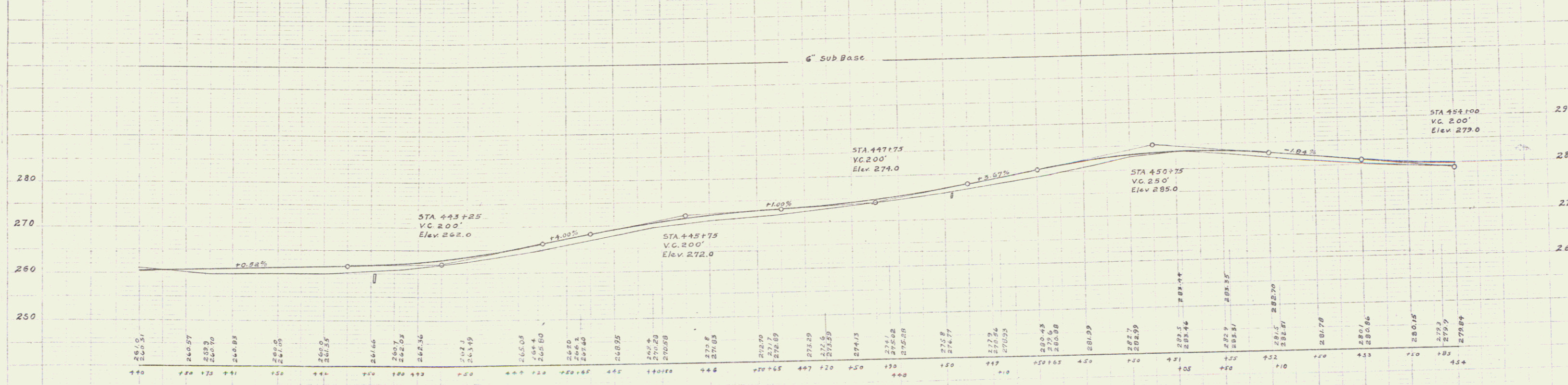
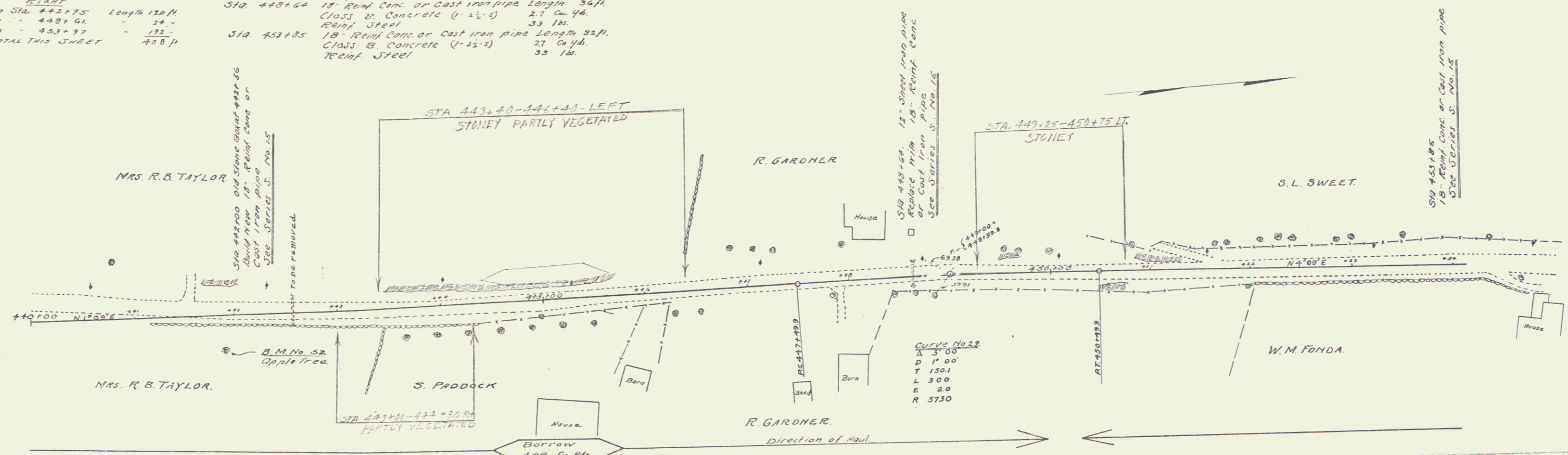
Sta 442100	18" Reinf. Conc. or Cast Iron pipe	Length 32 ft.
	Class B. Concrete (1-2 1/2-5)	27 Cu. yd.
	Reinf. Steel	33 lbs.
Sta 448162	18" Reinf. Conc. or Cast Iron pipe	Length 36 ft.
	Class B. Concrete (1-2 1/2-5)	27 Cu. yd.
	Reinf. Steel	33 lbs.
Sta 452185	18" Reinf. Conc. or Cast Iron pipe	Length 32 ft.
	Class B. Concrete (1-2 1/2-5)	27 Cu. yd.
	Reinf. Steel	33 lbs.

**6" SUB-BASE REQUIRED**

Sta 440000 to Sta. 454100 Length 1400 ft

73B 1926 17 73

PLAN  
NOT TO SCALE  
SEE SHEET 17



B.M. No. 52 Spike in 40" Apple Tree, Right of Sta. 441+71 Elev. 255.32

Series F No. 73B  
Sheet 17 of 73