

**WOOD GUARD RAIL REQUIRED**  
**ON LEFT**  
 Sta. 428+53 to Sta. 428+77 Length 24ft  
 " 438+00 " " 438+24 " 24"  
**ON RIGHT**  
 Sta. 437+75 to Sta. 439+13 Length 138ft  
**TOTAL THIS SHEET 176ft**

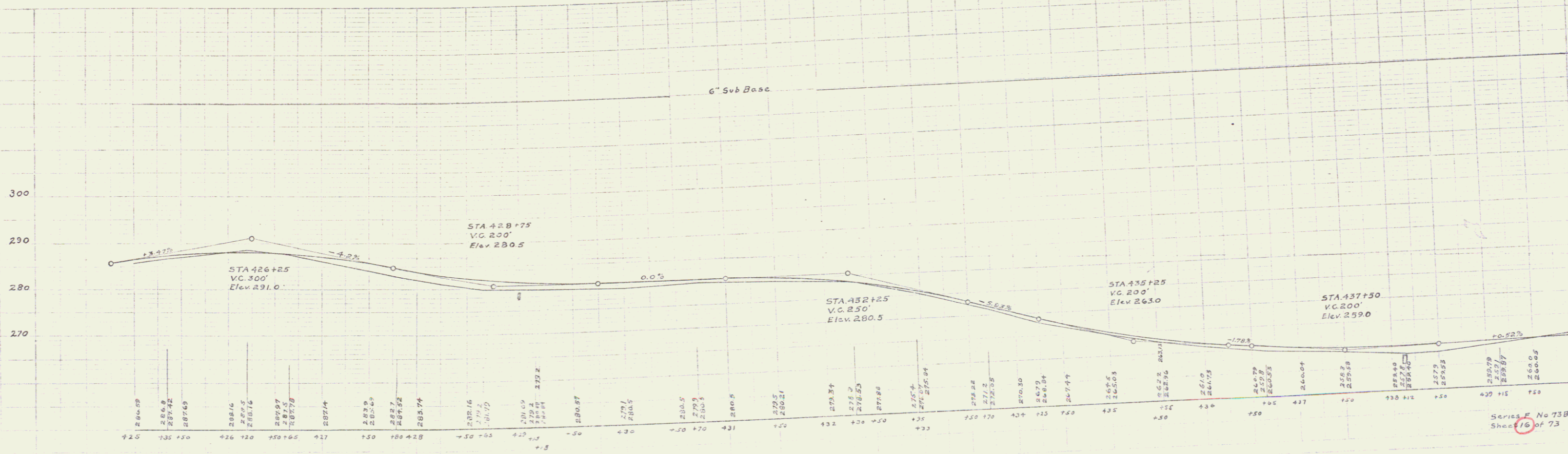
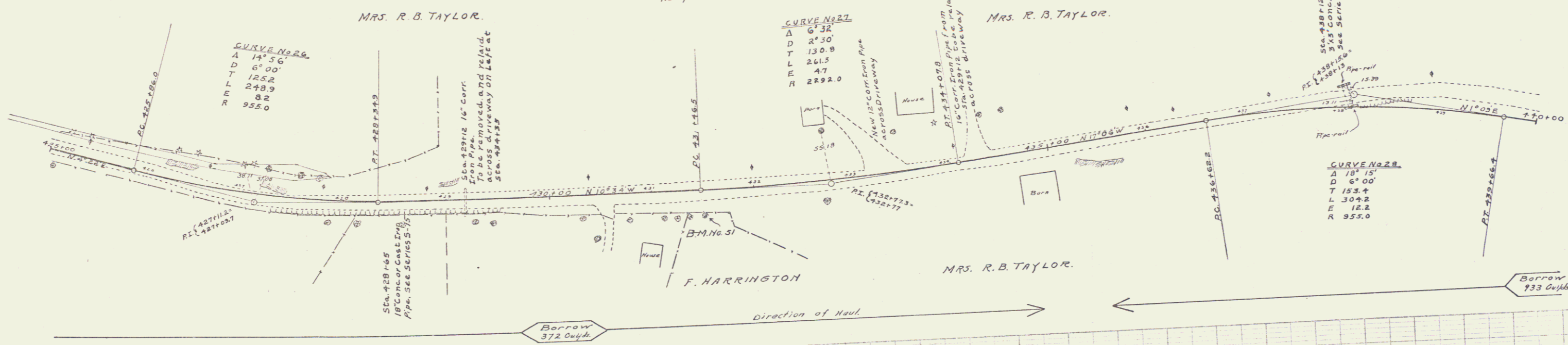
**CABLE GUARD RAIL REQUIRED**  
**ON RIGHT**  
 Sta. 427+00 to 429+16 Length 216ft

**NEW CULVERTS REQUIRED**  
 Sta. 428+65 18" Conc. or Cast Iron Pipe 56ft  
 Class B Concrete (1-2-4) 2.7 Cu. yds  
 Reinf. Steel 33 lbs.  
 Sta. 438+12 3x3 Concrete Box 17.7 Cu. yds  
 Class A Concrete (1-2-4) 1164 lbs.  
 Reinf. Steel

**6" SUBBASE REQUIRED**  
 Sta. 425+00 to 440+00 Length 1500ft

*nothing*

**RELAYING CULVERTS**  
 Sta. 433+55 Driveway on Left 32ft  
 Relaying 12" Corr. Iron Pipe 1.5 Cu. yds  
 Class B Concrete (1-2-4) 33 lbs.  
 Steel  
 Sta. 434+35 Driveway on Left 26 ft.  
 Relaying 15" Corr. Iron Pipe 23 Cu. yds  
 Class B Concrete (1-2-4) 33 lbs.  
 Reinf. Steel



B.M. 51 Spike in 18" Maple on Right of Sta. 431+50 Elev. 280.88